

IN THE SWING OF THINGS

Rob Vuono, Jr.

Instrumentation

Alto Sax 1	Guitar Chord Guide
Alto Sax 2	Guitar
Tenor Sax 1	Piano
Tenor Sax 2	Bass
Opt. Baritone Sax	Drum Set
Trumpet 1	Conductor's Full Score
Trumpet 2	Alternate Parts
Trumpet 3	C Flute
Opt. Trumpet 4	F Horn
Trombone 1	Baritone T.C.
Trombone 2	
Opt. Trombone 3	
Opt. Trombone 4	

Extra Conductor Score: \$6.00

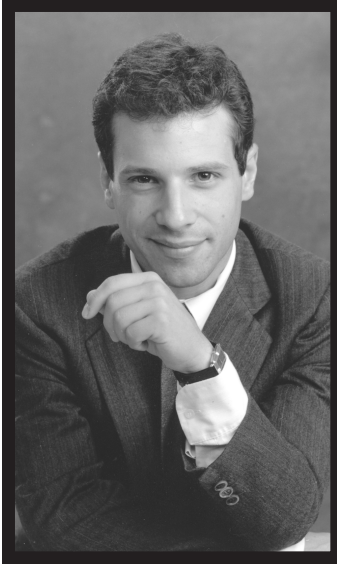
Extra Parts: \$2.50

Reproduction Prohibited



Frank J. Hackinson

2525 Davie Road, Suite 360
Fort Lauderdale, Florida 33317-7424
www.fjhmusic.com



The Composer

Composer and arranger Rob Vuono, Jr. is currently staff arranger for the U.S. Navy Band in Washington, D.C. Rob received his formal training at both the Manhattan School of Music and Mannes College of Music, studying classical composition and orchestration with Dr. Leo Edwards, Giampaolo Bracali, and David Loeb. Additionally, Rob studied arranging with Johnny Carisi, Jo Boyer, and Gil Evans. Rob has freelanced as a writer and performer in the New York area, and has been active as a jazz studies instructor for the International Art of Jazz program and director of the Stony Brook Jazz Ensemble at SUNY, Stony Brook, New York.

In 1986, Rob was hired as a writer and performer for the U.S. Navy Band, eventually securing the job of chief arranger for the U.S. Naval Academy Band in 1994. Rob writes for a wide variety of ensembles (jazz ensemble, wind ensemble, orchestra, choral groups, and chamber groups) and performers (the rock group Phish, the swing band Big Time Operator, and The Bluebonnet Brass). An accomplished trumpet and piano instrumentalist, Rob is currently active as a writer, performer, and bandleader, releasing recordings of arrangements by his own big band.

About the Music

In the Swing of Things is a bright, straight-ahead swinger that's a lot of fun and easy to play. The full ensemble kicks things off with a driving 4-bar intro that leads to the first chorus. Saxes take the melody, scored in unison-octaves, while brass offers up the punctuation with crisp chord punches. Have drums catch these punches without too much prepping—keep it as simple as possible.

Saxes break into harmony at bar 19, leading the chart into the first bridge. At this point, trombones step into the spotlight for three bars, scored simply but effectively in unison. They pass the melody to a small group of two alto saxes and two trumpets. This group plays a moving eighth line that starts as a fill for the trombones' point of repose in bar 24, then carries it into bar 25 where the true melody line begins again. Additionally, tenor saxes join trombones 1 and 2 on beat 3 of bar 24, while trombones 3 and 4 take a rest, thus creating another small contingent that plays in duet with the altos and trumpets.

The last 2 bars of the bridge (bars 27–28) contain two fun, recurring elements: a 2-part line that moves in contrary motion to itself, and a trombone glissando in 4-part harmony. Watch the dynamics on the line in bar 27—a quick crescendo as the two lines move away from each other, and a quick decrescendo as they come back to center. Trombones can have fun with the glissando; start sliding down as soon as beat 4 is attacked, and make a slow, smooth landing on beat 1 of bar 29.

At this point, trumpets take over the melody, and alto and tenor saxes join in on a line that forms a nice duet between them. Saxes take over at bar 33, first in unison-octaves, next in harmony, and finally by playing the recurring 2-part figure in contrary motion. All of this leads into the next chorus.

The brass section leads into the second chorus with a driving phrase. Make sure the rhythm section plays what is written, as everyone playing must phrase the same way. These next two 8-bar segments feature the saxes in soli, with brass offering up their own commentary here and there.

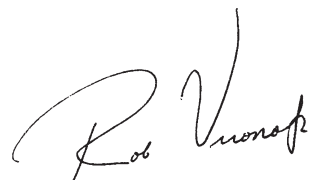
The second bridge commences at bar 53 and is similar in spirit to the first bridge—two trombones and tenor saxes on the melody for the first four bars, and altos and two trumpets picking it up at bar 57 while the first group smoothly moves into the background. The full ensemble pushes the chart nicely into the last eight bars of this chorus with a full, extended chord. Saxes continue their soli for another six bars, leading the chart into an 8-bar transition that begins at bar 67.

The transition contains two elements: a 2-part line in contrary motion, and a descending, harmonized line in the sax section (derived from their soli at bar 50). Make sure the band makes an effective decrescendo in bars 71–72. Drums start a solo break at bar 73 and drive the volume up to *fortissimo* at bar 74, at which point the full ensemble drives full-force into the last chorus.

Three elements comprise the next two 8-bar sections: unison-octave saxes on the melody, brass on pop figures, and trombones on sectional glissandi. Make sure the dynamics drop to a comfy *mezzo forte*. A crescendo at bar 90 will push the chart into the last bridge.

Bar 91 features the full ensemble on melody, with drums filling in the blanks. At bar 95, the dynamic level drops to *mezzo forte* while two trumpets and alto saxes take the melody—two trombones and tenor saxes provide the background. The full ensemble is back in full force at bar 99, leading the way to an exciting solo fill in the drums in bars 107–108. Make sure brass attacks the chord on the upbeat of 4 in bar 108 then immediately gets out of the way of the sax section. Brass should then make a smooth crescendo into beat 4 of bar 110. Trombones and saxes recap the line in contrary motion, and the chart ends with full ensemble on two big unison-octaves.

All rhythm section parts are written out to aid less experienced players. Additionally, the chart is scored so that it will sound full with as little as four saxes (AATB), three trumpets, and two trombones.

A handwritten signature in black ink that reads "Rob Vroman". The signature is stylized with a large, looping initial "R" and a cursive "Vroman".

IN THE SWING OF THINGS

ROB VUONO, JR.
(ASCAP)

SWING (♩ = 160)

5

Alto Sax 1

Alto Sax 2

Tenor Sax 1

Tenor Sax 2

Opt. Baritone Sax

Trumpet 1

Trumpet 2

Trumpet 3

Opt. Trumpet 4

Trombone 1

Trombone 2

Opt. Trombone 3

Opt. Trombone 4

Guitar

Piano

Bass

Drum Set

STICKS ENS. TIME ON RIDE

ENS. FILL 3

BRASS

CHORDS APPEAR ON PART

CHORDS APPEAR ON PART

E^b6 B^b7(b⁹) E^b6 A⁹(#5) A^b9 A^b13 A^b9 F-7 A^b13 A^b B^b13 N.C. E^b6 A^b9

2 3 4 5 6 7

ME TIME ON RIDE

13

Alto Sax 1

Alto Sax 2

Tenor Sax 1

Tenor Sax 2

Opt. Baritone Sax

Trumpet 1

Trumpet 2

Trumpet 3

Opt. Trumpet 4

Trombone 1

Trombone 2

Opt. Trombone 3

Opt. Trombone 4

Guitar

Piano

Bass

Drum Set

BRASS

TIME ON RIDE

F-7 Bb9 G-7 Gb-7 F-7 Bb7(b9) E7 Eb6 Ab9

Alto Sax 1

Alto Sax 2

Tenor Sax 1

Tenor Sax 2

Opt. Baritone Sax

Trumpet 1

Trumpet 2

Trumpet 3

Opt. Trumpet 4

Trombone 1

Trombone 2

Opt. Trombone 3

Opt. Trombone 4

Guitar

Piano

Bass

Drum Set

BRASS

BRASS

LIGHT FILL

TIME ON RICE

F-7

E7(#9)

Ebb

D7(#9)

G#9

G6

E-7

Alto Sax 1

Alto Sax 2

Tenor Sax 1

Tenor Sax 2

Opt. Baritone Sax

Trumpet 1

Trumpet 2

Trumpet 3

Opt. Trumpet 4

Trombone 1

Trombone 2

Opt. Trombone 3

Opt. Trombone 4

Guitar

Piano

Bass

Drum Set

22 25 24 25 26 27 28

AS WRITTEN CHORDS APPEAR ON PART

A-7 D9 G#9 E-7 A-9 C-7 F7 Bb#7 G-7 C-7 C-7(#5) F7 Bb7 N.C. F-9 Bb9 E6

Reproduction Prohibited

29

Alto Sax 1

Alto Sax 2

Tenor Sax 1

Tenor Sax 2

Opt. Baritone Sax

Trumpet 1

Trumpet 2

Trumpet 3

Opt. Trumpet 4

Trombone 1

Trombone 2

Opt. Trombone 3

Opt. Trombone 4

Guitar

Piano

Bass

Drum Set

TIME ON RIDE

LIGHT FILL

BRASS

LIGHT FILL

29 31 32 33 34 35

E \flat 6 A9 A \flat 9 F-7 A13 B \flat 13 E \flat 6 E \flat 6 N.C.

Reproduction Prohibited

37

Alto Sax 1

Alto Sax 2

Tenor Sax 1

Tenor Sax 2

Opt. Baritone Sax

Trumpet 1

Trumpet 2

Trumpet 3

Opt. Trumpet 4

Trombone 1

Trombone 2

Opt. Trombone 3

Opt. Trombone 4

Guitar

Piano

Bass

Drum Set

SET IT UP!

TIME ON RIDE

BRASS

36 37 38 39 40 41 42

F-9 E9 Eb9 E9/Bb Eb9 E9/Bb Eb9 E9/Bb Eb9 G9/Eb Ab9 N.C. Ab9 F-7 E9 Bb15

45

Alto Sax 1

Alto Sax 2

Tenor Sax 1

Tenor Sax 2

Opt. Baritone Sax

Trumpet 1

Trumpet 2

Trumpet 3

Opt. Trumpet 4

Trombone 1

Trombone 2

Opt. Trombone 3

Opt. Trombone 4

Guitar

Piano

Bass

Drum Set

BRASS FILL TIME ON RIDE BRASS

G-7 Gb9 B7 F-7 E7 Bb9(#11) Eb9 Eb7 Eb9 Ab13 Ab13 Ab13 Ab9 Ab13 Ab9 F-7

45 46 47 48 49

Preview Only
Reproduction Prohibited

53

Alto Sax 1

Alto Sax 2

Tenor Sax 1

Tenor Sax 2

Opt. Baritone Sax

Trumpet 1

Trumpet 2

Trumpet 3

Opt. Trumpet 4

Trombone 1

Trombone 2

Opt. Trombone 3

Opt. Trombone 4

Guitar

Piano

Bass

Drum Set

87(#9) A7(#9) F7(#9) D7(#9)/Bb Eb6 Gb6 Gb07 F-7 Bb7(b13) Eb9(#11) D7(#9) G09 A-7 A-7/O G6 G09 G6 C-7 F07 F7 Bb07

BRASS

TONS. / SAXES

TONS. / SAXES

TONS. / SAXES

(DON'T PREP TOO MUCH)

50 51 52 53 54 55 56

61

Alto Sax 1

Alto Sax 2

Tenor Sax 1

Tenor Sax 2

Opt. Baritone Sax

Trumpet 1

Trumpet 2

Trumpet 3

Opt. Trumpet 4

Trombone 1

Trombone 2

Opt. Trombone 3

Opt. Trombone 4

Guitar

Piano

Bass

Drum Set

G-7 C-7 F7 Bb9 F-7 Bb9(#11) Eb9 Ab13 Ab9(#11)

ENS. LIGHT FILL TIME ON RIDE BRASS

57 58 59 60 62 65

67

Alto Sax 1

Alto Sax 2

Tenor Sax 1

Tenor Sax 2

Opt. Baritone Sax

Trumpet 1

Trumpet 2

Trumpet 3

Opt. Trumpet 4

Trombone 1

Trombone 2

Opt. Trombone 3

Opt. Trombone 4

Guitar

Piano

Bass

Drum Set

BRASS

HI-HAT

Ab9 F-7 m7#11 G-7 F-7/Bb Bb7(b9) Eb7 N.C. Ab7(#9) F7(#9) Db7(#9) N.C. Ab7(#9) F7(#9) Db7(#9)

L.H. OPTIONAL

64 65 66 67 68 69 70



75

Alto Sax 1

Alto Sax 2

Tenor Sax 1

Tenor Sax 2

Opt. Baritone Sax

Trumpet 1

Trumpet 2

Trumpet 3

Opt. Trumpet 4

Trombone 1

Trombone 2

Opt. Trombone 3

Opt. Trombone 4

Guitar

Piano

Bass

Drum Set

N.C.

F7

Bb7

(#11)

Ebb

E6

E6

Ab9

A9

SOLO BREAK - AD LIB.

3

3

3

3

FILL

TIME ON RIDE

BRASS

71

72

73

74

75

76

77

REPRODUCTION PROHIBITED

Alto Sax 1

Alto Sax 2

Tenor Sax 1

Tenor Sax 2

Opt. Baritone Sax

Trumpet 1

Trumpet 2

Trumpet 3

Opt. Trumpet 4

Trombone 1

Trombone 2

Opt. Trombone 3

Opt. Trombone 4

Guitar

Piano

Bass

Drum Set

Ab9 F-7 F#-7 F-7 Bb9 G-7 F#-7 F-7 Bb13 Eb9 Eb6 Eb Eb6

BRASS

78 79 80 81 82 83 84



Alto Sax 1

Alto Sax 2

Tenor Sax 1

Tenor Sax 2

Opt. Baritone Sax

Trumpet 1

Trumpet 2

Trumpet 3

Opt. Trumpet 4

Trombone 1

Trombone 2

Opt. Trombone 3

Opt. Trombone 4

Guitar

Piano

Bass

Drum Set

Chord progression: Ab9, A9, Ab9, F-7, F#-7, F-7, Bb9, E9, Eb6/9, Eb6, D7(#9)(b9), G#9, E-7

Reproduction Prohibited

2, 2, FILL, FILL, 3, ENS.

85, 86, 87, 88, 89, 90, 91

The image displays a page of a musical score for a jazz ensemble. The score includes parts for Alto Sax 1 & 2, Tenor Sax 1 & 2, Opt. Baritone Sax, Trumpet 1, 2, 3, Opt. Trumpet 4, Trombone 1, 2, Opt. Trombone 3, Opt. Trombone 4, Guitar, Piano, Bass, and Drum Set. The music is in 4/4 time with a key signature of three flats (Bb, Ebb, Ab). A large 'REPRODUCTION PROHIBITED' watermark is overlaid diagonally across the center of the page. The score contains various musical notations such as notes, rests, slurs, and dynamic markings like 'mf' and 'SUB.'. The guitar part includes a chord chart above the staff. The drum set part includes 'FILL' and 'TIME ON RIDE' markings. Measure numbers 92, 95, 96, 97, and 98 are indicated at the bottom of the page.

Chord Chart:
 Measure 92: A-7, C#9, D9, F#9 G#9
 Measure 93: B-7, C-7, Gb13, F7
 Measure 94: B9 Bb7
 Measure 95: Bb7(#9), Bb6
 Measure 96: C-7, F7(b9)
 Measure 97: Bb7, Bb6
 Measure 98: F-9, Bb9(#11)

Drum Set markings:
 Measure 92-94: FILL
 Measure 95: TIME ON RIDE
 Measure 98: ENS., FILL 3

99

Alto Sax 1

Alto Sax 2

Tenor Sax 1

Tenor Sax 2

Opt. Baritone Sax

Trumpet 1

Trumpet 2

Trumpet 3

Opt. Trumpet 4

Trombone 1

Trombone 2

Opt. Trombone 3

Opt. Trombone 4

Guitar

Piano

Bass

Drum Set

FILL 3

ENS.

BRASS

CRES. POCO A POCO

E9 Eb9 E9 Eb6 Ab9 A9 Ab9 F-7 Bb9(#11) Bb7 Ab15 G-7 C7(b9)

99 100 101 102 103 104 105

Alto Sax 1

Alto Sax 2

Tenor Sax 1

Tenor Sax 2

Opt. Baritone Sax

Trumpet 1

Trumpet 2

Trumpet 3

Opt. Trumpet 4

Trombone 1

Trombone 2

Opt. Trombone 3

Opt. Trombone 4

Guitar

Piano

Bass

Drum Set

106

107

108

109

110

111

112

SOLO FILL

ENS.

CRESC. POCO A POCO

F-7 Bb7(#9) Eb9

Bb7(#9) Eb9 N.C.

REPRODUCTION PROHIBITED

Preview Only

Reproduction Prohibited