

JIVER'S LICENSE

Rob Vuono, Jr.

Instrumentation

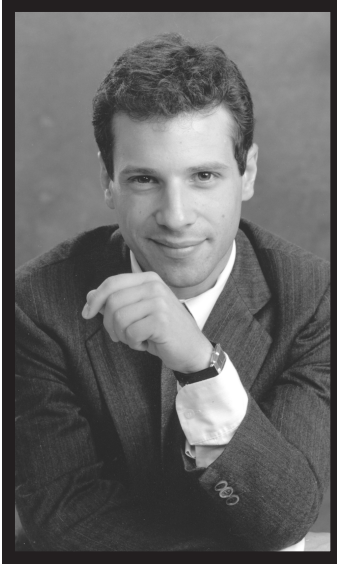
Alto Sax 1	Trombone 1
Alto Sax 2	Trombone 2
Tenor Sax 1	Trombone 3
Tenor Sax 2	Trombone 4 (Bass)
Baritone Sax	Guitar Chord Guide
Trumpet 1	Guitar
Trumpet 2	Piano
Trumpet 3	Bass
Trumpet 4	Drum Set

Extra Conductor Score: \$6.00

Extra Parts: \$3.00

Reproduction Prohibited





The Composer

Composer and arranger Rob Vuono, Jr. is currently staff arranger for the U.S. Navy Band in Washington, D.C. Rob received his formal training at both the Manhattan School of Music and Mannes College of Music, studying classical composition and orchestration with Dr. Leo Edwards, Giampaolo Bracali, and David Loeb. Additionally, Rob studied arranging with Johnny Carisi, Jo Boyer, and Gil Evans. Rob has freelanced as a writer and performer in the New York area, and has been active as a jazz studies instructor for the International Art of Jazz program and director of the Stony Brook Jazz Ensemble at SUNY, Stony Brook, New York.

In 1986, Rob was hired as a writer and performer for the U.S. Navy Band, eventually securing the job of chief arranger for the U.S. Naval Academy Band in 1994. Rob writes for a wide variety of ensembles (jazz ensemble, wind ensemble, orchestra, choral groups, and chamber groups) and performers (the rock group Phish, the swing band Big Time Operator, and The Bluebonnet Brass). An accomplished trumpet and piano instrumentalist, Rob is currently active as a writer, performer, and bandleader, releasing recordings of arrangements by his own big band.

About the Music

Upbeat, happy, and swingin' all the way, *Jiver's License* moves between a 2- and 4-beat feel. ♩ = 180 will put this chart in the pocket—the contrasts between 2- and 4-beat swing, loud and soft, and high and low will really make things cook!

Saxes should lip the recurring half-step figures whenever marked. Start on the upper pitch and bend down a semitone, then back up. If this proves problematic, simply play the figure normally.

Bars 83–99 is a real flag-waver—backbeat and all. Make sure the lead trombone sound predominates on the recurring figure in bars 83 (upbeat of 3) and 84 (and again in bars 85–86, 87–88, 91–92, 93–94, and 95–96). Trumpets 2, 3, and 4 should add support but not overpower the lead trombone.

The sax figure into bar 99 is most important. Make sure bass and drums catch the figure as written, and that saxes really play out. Bar 99 features the rhythm section and must be played as written.

JIVER'S LICENSE

ROB VUONO, JR.
(ASCAP)

SWING (♩ = 180)

5

Alto Sax 1

Alto Sax 2

Tenor Sax 1

Tenor Sax 2

Baritone Sax

Trumpet 1

Trumpet 2

Trumpet 3

Trumpet 4

Trombone 1

Trombone 2

Trombone 3

Trombone 4 (Bass)

Guitar

Piano

Bass

Drum Set

AS WRITTEN

AS WRITTEN (PIZZ.)

FILL

HI-HAT

Chords: G7, F7, F#7, G7, C6, Bb+/E, F6, G13, G9

Reproduction Prohibited

Copyright © 2006 The FJH Music Company Inc.

International Copyright Secured. Made in U.S.A. All Rights Reserved.

WARNING! This arrangement is protected by copyright law. Copying or reproducing it by any method without the publisher's written permission is an infringement of copyright law. Anyone who reproduces copyrighted materials is subject to substantial penalties for each infringement.

Alto Sax 1

Alto Sax 2

Tenor Sax 1

Tenor Sax 2

Baritone Sax

Trumpet 1

Trumpet 2

Trumpet 3

Trumpet 4

Trombone 1

Trombone 2

Trombone 3

Trombone 4 (Bass)

Guitar

Piano

Bass

Drum Set

7 8 9 10 11 12

Chords: C6, Bb+/E, F6, G1b, G2, C6, Bb+/E, F6, F#b, G7, D7, Db9, C6/9, N.C.

Reproduction Prohibited

Watermark: Preview Only

13

Alto Sax 1

Alto Sax 2

Tenor Sax 1

Tenor Sax 2

Baritone Sax

Trumpet 1

Trumpet 2

Trumpet 3

Trumpet 4

Trombone 1

Trombone 2

Trombone 3

Trombone 4 (Bass)

Guitar

Piano

Bass

Drum Set

HI-HAT

13 14 15 16 17 18 19

Chords: C6 Bb+/E F6 G15 G9 C6 Bb+/E F6 G15 G9 C6 Bb+/E F6 F#0 G7

Reproduction Prohibited

(LIP) 3 3 3 3

21

Alto Sax 1

Alto Sax 2

Tenor Sax 1

Tenor Sax 2

Baritone Sax

Trumpet 1

Trumpet 2

Trumpet 3

Trumpet 4

Trombone 1

Trombone 2

Trombone 3

Trombone 4 (Bass)

Guitar

Piano

Bass

Drum Set

SOLO

3

mf

CHORDS APPEAR ON PART

RIDE

BRASS

20 21 22 23 24 25 26

D-9 D#9 C#9 Ab9 Ab13 Ab9 Ab13 Ab9 B#9 C#9 F-7 Bb9 C#7 Bb13 A-7

Alto Sax 1

Alto Sax 2

Tenor Sax 1

Tenor Sax 2

Baritone Sax

Trumpet 1

Trumpet 2

Trumpet 3

Trumpet 4

Trombone 1

Trombone 2

Trombone 3

Trombone 4 (Bass)

Guitar

Piano

Bass

Drum Set

27 28 29 30 31 32

SOLO

MELODY

3

AS WRITTEN

HI-HAT

TPTS.

RIDE

TPTS. 3

D7(b9) G7 G13/F G7(b13) F/G N.C. Ab7 C6 N.C. G13

Reproduction Prohibited

(29)

Alto Sax 1

Alto Sax 2

Tenor Sax 1

Tenor Sax 2

Baritone Sax

Trumpet 1

Trumpet 2

Trumpet 3

Trumpet 4

Trombone 1

Trombone 2

Trombone 3

Trombone 4 (Bass)

Guitar

Piano

Bass

Drum Set

35 34 35 36 37 38

CHORDS APPEAR ON PART

CHORDS APPEAR ON PART

RIDE

RIDE

mf SUB

37

LIP

LIP

LIP

LIP

3

3

3

3

mf

mf

SOLI

SOLI

SOLI

SOLI

6

Bb⁺/E

F6

F#6

G7

D-9

D^b9

C#9

Alto Sax 1

Alto Sax 2

Tenor Sax 1

Tenor Sax 2

Baritone Sax

Trumpet 1

Trumpet 2

Trumpet 3

Trumpet 4

Trombone 1

Trombone 2

Trombone 3

Trombone 4 (Bass)

Guitar

Piano

Bass

Drum Set

AS WRITTEN

SOLO

ME SOB

CHORDS APPEAR ON PART

BRASS ME SOB

3

89 Bbs

39 40 41 42 43 44

45

Alto Sax 1

Alto Sax 2

Tenor Sax 1

Tenor Sax 2

Baritone Sax

Trumpet 1

Trumpet 2

Trumpet 3

Trumpet 4

Trombone 1

Trombone 2

Trombone 3

Trombone 4 (Bass)

Guitar

Piano

Bass

Drum Set

LIP

SOLI

mf

f

mf SUB

BRASS

TIME ON RIDE

E \flat 9

A \flat 9

E \flat 6

D \flat 7

C7

D7(\flat 9)

F9

F9

E7

E \flat 6

C-7

D \flat 7(\flat 9)/G \flat

45

46

47

48

49

50

51

53

SOLI

3

IV

Alto Sax 1

Alto Sax 2

Tenor Sax 1

Tenor Sax 2

Baritone Sax

Trumpet 1

Trumpet 2

Trumpet 3

Trumpet 4

Trombone 1

Trombone 2

Trombone 3

Trombone 4 (Bass)

Guitar

Piano

Bass

Drum Set

F7 89 8b9 8b13 Eb6

me

RIDE

BRASS - No PREP

No PREP

52 53 54 55 56 57

Alto Sax 1

Alto Sax 2

Tenor Sax 1

Tenor Sax 2

Baritone Sax

Trumpet 1

Trumpet 2

Trumpet 3

Trumpet 4

Trombone 1

Trombone 2

Trombone 3

Trombone 4 (Bass)

Guitar

Piano

Bass

Drum Set

Chords: Eb/Bb Eb°/Bb F#m Eb Eb°9 B9 E6 Eb°9 Eb°9

Drum Set: RIDE TPTS. TONS. TPTS./SAXES TONS.

61

Alto Sax 1

Alto Sax 2

Tenor Sax 1

Tenor Sax 2

Baritone Sax

Trumpet 1

Trumpet 2

Trumpet 3

Trumpet 4

Trombone 1

Trombone 2

Trombone 3

Trombone 4 (Bass)

Guitar

Piano

Bass

Drum Set

64

65

66

67

68

69

REPRODUCTION PROHIBITED

SOLI LIP

AS WRITTEN

ME RIDE

BRASS

ENS.

p SUB

p SUB

f

89

Gb7

F-7

E9

Ebb9

D9

B9

Bbb9(#11)

STRAIGHT 8THS

SWING

75

Alto Sax 1

Alto Sax 2

Tenor Sax 1

Tenor Sax 2

Baritone Sax

Trumpet 1

Trumpet 2

Trumpet 3

Trumpet 4

Trombone 1

Trombone 2

Trombone 3

Trombone 4 (Bass)

Guitar

Piano

Bass

Drum Set

LIP

m^f CRESC. POCO A POCO

AS WRITTEN

BRASS

HI-HAT

70

71 m^f SUB

72

73

74

75

76

m^f CRESC. POCO A POCO



Alto Sax 1

Alto Sax 2

Tenor Sax 1

Tenor Sax 2

Baritone Sax

Trumpet 1
mf *Cresc. Poco a Poco*

Trumpet 2
mf *Cresc. Poco a Poco*

Trumpet 3
mf *Cresc. Poco a Poco*

Trumpet 4
mf *Cresc. Poco a Poco*

Trombone 1
mf *Cresc. Poco a Poco*

Trombone 2
mf *Cresc. Poco a Poco*

Trombone 3
mf *Cresc. Poco a Poco*

Trombone 4 (Bass)
mf *Cresc. Poco a Poco*

Guitar
 CHORDS APPEAR ON PART

Piano
p *Sub*

Bass
p *Sub*

Drum Set
 ENS. *p* *Sub*

77 78 79 80 81 82

REPRODUCTION PROHIBITED

85

Alto Sax 1

Alto Sax 2

Tenor Sax 1

Tenor Sax 2

Baritone Sax

Trumpet 1

Trumpet 2

Trumpet 3

Trumpet 4

Trombone 1

Trombone 2

Trombone 3

Trombone 4 (Bass)

Guitar

Piano

Bass

Drum Set

TIME ON RIDE W/ BACKBEAT

Trps.

85 84 85 86 87 88 89

Reproduction Prohibited

91

Alto Sax 1

Alto Sax 2

Tenor Sax 1

Tenor Sax 2

Baritone Sax

Trumpet 1

Trumpet 2

Trumpet 3

Trumpet 4

Trombone 1

Trombone 2

Trombone 3

Trombone 4 (Bass)

Guitar

Piano

Bass

Drum Set

90 91 92 93 94 95 96

Chord symbols: G-7, D9 C9, F6, Bb9, F6, Ab/O, Ab0, G-7, G-7/C

Drum notation: ENS., 3, TIME ON RIDE W/ BACKBEAT



99

Alto Sax 1

Alto Sax 2

Tenor Sax 1

Tenor Sax 2

Baritone Sax

Trumpet 1

Trumpet 2

Trumpet 3

Trumpet 4

Trombone 1

Trombone 2

Trombone 3

Trombone 4 (Bass)

SHORT DROP

Guitar

F6 Ab^o/D Ab^o G-7 C7(b13) F#b9/9 RHYTHM SOLI AS IS Db9 N.C. Db9

Piano

RHYTHM SOLI AS IS N.C.

Bass

RHYTHM SOLI AS IS

Drum Set

TPRS. ENS. SAXES STOP TIME RHYTHM SOLI AS IS ENS.

97 98 99 100 101 102 103

CLOSED HI-HAT m^f SET IT UP m^f CLOSED HI-HAT

107

Alto Sax 1

Alto Sax 2

Tenor Sax 1

Tenor Sax 2

Baritone Sax

Trumpet 1

Trumpet 2

Trumpet 3

Trumpet 4

Trombone 1

Trombone 2

Trombone 3

Trombone 4 (Bass)

Guitar

Piano

Bass

Drum Set

REPRODUCTION PROHIBITED

CHORDS: Ab9, G9, Gb9, F6/9, Eb9, Db9, C9, F6, Bb9, F6, G-7, A-7, Ab-7, G-7

ENSEMBLE: ENS.

TIME ON RIDE W/ BACKBEAT

MEASURES: 104, 105, 106, 107, 108, 109, 110

MARKINGS: m^p, SHORT DROP, 3

Alto Sax 1

Alto Sax 2

Tenor Sax 1

Tenor Sax 2

Baritone Sax

Trumpet 1

Trumpet 2

Trumpet 3

Trumpet 4

Trombone 1

Trombone 2

Trombone 3

Trombone 4 (Bass)

Guitar

Piano

Bass

Drum Set

SOLO BREAK

SOLO BREAK

ENS.

111 112 113 114 115 116 117 118

Chord symbols: G9/C9(#11), F6, F9/E, Bbb, B0, G-7/D, C0, Bbb9, A-7, G-7, F#0/C, F09(#11)

Reproduction Prohibited