

CONDUCTOR

FJH INTERMEDIATE JAZZ ENSEMBLE

Grade 3.5

A TASTE OF HONEY

RICK MARLOW AND BOBBY SCOTT

Arranged by

Rob Vuono, Jr.

Instrumentation

Alto Sax 1	Trombone 1
Alto Sax 2	Trombone 2
Tenor Sax 1	Trombone 3
Tenor Sax 2	Bass Trombone
Baritone Sax	Guitar Chord Guide
Trumpet 1	Guitar
Trumpet 2	Piano
Trumpet 3	Bass
Trumpet 4	Drum Set
	Conductor's Full Score

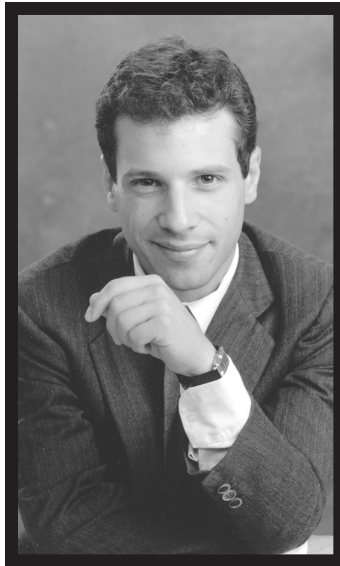
Extra Conductor Score: \$6.00

Extra Parts: \$3.00

Reproduction Prohibited



2525 Davie Road, Suite 360
Fort Lauderdale, Florida 33317-7424
www.fjhmusic.com



The Arranger

Composer and arranger Rob Vuono, Jr. is currently the advanced courses arranging instructor at the Armed Forces School of Music in Norfolk, Virginia. Rob received his formal training at both the Manhattan School of Music and Mannes College of Music, studying classical composition and orchestration with Dr. Leo Edwards, Giampaolo Bracali, and David Loeb. Additionally, Rob studied arranging with Johnny Carisi, Jo Boyer, and Gil Evans. Rob has freelanced as a writer and performer in the New York area, and has been active as a jazz studies instructor for the International Art of Jazz program and director of the Stony Brook Jazz Ensemble at SUNY, Stony Brook, New York.

In 1986, Rob was hired as a writer and performer for the U.S. Navy Band, eventually securing the job of chief arranger for the U.S. Naval Academy Band in 1994. Rob writes for a wide variety of ensembles (jazz ensemble, wind ensemble, orchestra, choral groups, and chamber groups) and performers (the rock group Phish, the swing band Big Time Operator, and The Bluebonnet Brass). An accomplished trumpet and piano instrumentalist, Rob is currently active as a writer, performer, and bandleader, releasing recordings of arrangements by his own big band.

About the Music

This tune has an interesting history. It was originally written for the 1960 Broadway play bearing the same name before the 1961 film version; two 1962 recordings made the pop charts; and a third failed to chart at all, but was highly regarded by Paul McCartney (and included on the Beatles's album *Please Please Me*). In late 1964, Herb Alpert began recording *Whipped Cream & Other Delights*. Engineer Larry Levine suggested *A Taste of Honey* to Alpert, and a compelling arrangement was put together featuring a shuffle beat and some dramatic stop-times. The album was released in April of '65, and by September it had peaked at No. 7 on the pop charts, picking up the Grammy for Record of the Year in '66.

The arrangement starts with a chorale-type introduction in the brass that is based on the final eight bars of the tune. After a *fermata*, drums set the tempo for the recurring hook, which appears as phrase extensions as well as a coda. The arrangement is divided into three sections, each building gradually and changing key. The first chorus (D dorian) features trumpet and alto predominantly, as well as the sax section. A change of key to E \flat dorian leads into an alto solo with backgrounds that continually intensify. The final chorus (E dorian) features unison saxes on the melody backed by brass punctuations. This is where the chart really shouts. There is a brief return to the opening chorale before drums kick the ensemble into the hook (coda). The chart ends with saxes and rhythm playing the hook to a final *fermata*.

A written solo and changes are provided for alto sax. Rhythm section parts are fully notated as well; the *Take Five*-type groove is most important because it fits the melodic phrasing throughout. Play the guitar, piano, and bass parts as written. (Suggested voicings may be altered.) Piano fills are most important and should be played as written and brought out. And always keep the intensity moving along steadily through the chart.

A TASTE OF HONEY

Words by RICK MARLOW
Music by BOBBY SCOTT
Arranged by ROB VUONO, JR.

$\text{♩} = 80$
STRAIGHT 8's

SWING $\text{♩} = 150$ 8

Alto Sax 1

Alto Sax 2

Tenor Sax 1

Tenor Sax 2

Baritone Sax

Trumpet 1

Trumpet 2

Trumpet 3

Trumpet 4

Trombone 1

Trombone 2

Trombone 3

Bass Trombone

Guitar

Piano

Bass

Drum Set

2 3 4 5 6 7 8 9

CHORDS APPEAR ON PART

D-11 A-7

FILL

TIME (REFER TO BAR 12 FOR SUGGESTED PATTERN)

ENS.

REPRODUCTION PROHIBITED

Copyright © 1960 and 1962 Songfest Music Corp. Copyrights Renewed.
Sole Selling Agent: George Pincus & Sons Music Corp., 1650 Broadway, New York, NY 10019
This arrangement Copyright © 2003 Songfest Music Corp. Used by Permission.
International Copyright Secured. Made in U.S.A. All Rights Reserved.

WARNING! This arrangement is protected by copyright law. Copying or reproducing it by any method without the publisher's written permission is an infringement of copyright law. Anyone who reproduces copyrighted materials is subject to substantial penalties for each infringement.

SOLI W/TPT. 2 24

Alto Sax 1

Alto Sax 2

Tenor Sax 1

Tenor Sax 2

Baritone Sax

Trumpet 1

Trumpet 2

Trumpet 3

Trumpet 4

Trombone 1

Trombone 2

Trombone 3

Bass Trombone

Guitar

Piano

Bass

Drum Set

SOLI W/ALTO 1

A-7 D-11 C6/9/G D6/9/F Eb6/9

D-11 G13 E-7/A D-11

21 22 23 24 *m^f* 25 26 27 28 29 30 31 32 *m^f*

Alto Sax 1

Alto Sax 2

Tenor Sax 1

Tenor Sax 2

Baritone Sax

Trumpet 1

Trumpet 2

Trumpet 3

Trumpet 4

Trombone 1

Trombone 2

Trombone 3

Bass Trombone

Guitar

Piano

Bass

Drum Set

(D-II)

G13

D-II

SOLO FILL

FAC09

40

33 34 35 36 37 38 39 40 41 42

46

Alto Sax 1

Alto Sax 2

Tenor Sax 1

Tenor Sax 2

Baritone Sax

Trumpet 1

Trumpet 2

Trumpet 3

Trumpet 4

Trombone 1

Trombone 2

Trombone 3

Bass Trombone

Guitar

Piano

Bass

Drum Set

45 44 45 46 47 48 49 50 51 52 53

Chords: D-11, E-11 Bb9(#11), A7(b9), D-11, C6/G, Db6/f, Eb6/9, D-11, A-7, D-11, C6/G, Db6/f, Eb6/9

Reproduction Prohibited

76

Alto Sax 1

Alto Sax 2

Tenor Sax 1

Tenor Sax 2

Baritone Sax

Trumpet 1

Trumpet 2

Trumpet 3

Trumpet 4

Trombone 1

Trombone 2

Trombone 3

Bass Trombone

Guitar

Piano

Bass

Drum Set

SOLO

SOLO FILL

ENS.

76 77 78 79 80 81 82 85 84 85

96 104 SOLO CHORDS APPEAR ON PART

Alto Sax 1

Alto Sax 2

Tenor Sax 1

Tenor Sax 2

Baritone Sax

Trumpet 1

Trumpet 2

Trumpet 3

Trumpet 4

Trombone 1

Trombone 2

Trombone 3

Bass Trombone

Guitar

Piano

Bass

Drum Set

96 97 98 99 100 101 102 103 104 105 106

D-11 A-7 D-11 A-7 Eb-11 Bb-7 Eb-11 Db9/Ab D9/Gb Eb9 Eb-11

112

Alto Sax 1

Alto Sax 2

Tenor Sax 1

Tenor Sax 2

Baritone Sax

Trumpet 1

Trumpet 2

Trumpet 3

Trumpet 4

Trombone 1

Trombone 2

Trombone 3

Bass Trombone

Guitar

Piano

Bass

Drum Set

107 108 109 110 111 112 113 114 115 116 117

Reproduction Prohibited

Chord symbols: Eb-11, Ab13, F-7/Bb, Eb-11, Eb-11

Drum Set markings: T8NS.

130 138

Alto Sax 1

Alto Sax 2

Tenor Sax 1

Tenor Sax 2

Baritone Sax

Trumpet 1

Trumpet 2

Trumpet 3

Trumpet 4

Trombone 1

Trombone 2

Trombone 3

Bass Trombone

Guitar

Piano

Bass

Drum Set

129 130 131 132 133 134 135 136 137 138 139

Chord symbols: $D^{\flat}9/A^{\flat}$, $D^{\flat}9/G^{\flat}$, $E^{\flat}9$, $E^{\flat}11$, $A^{\flat}13$, $F-7/B^{\flat}$, $E^{\flat}11$

Reproduction Prohibited

152 *tr* **END SOLO** 160

Alto Sax 1

Alto Sax 2

Tenor Sax 1

Tenor Sax 2

Baritone Sax

Trumpet 1

Trumpet 2

Trumpet 3

Trumpet 4

Trombone 1

Trombone 2

Trombone 3

Bass Trombone

Guitar

Piano

Bass

Drum Set

8b7 (b9) Eb-11 8b-7 Eb-11 Db9/Ab Eb9/Gb Eb-11 8b-7 Eb-11 Db9/Ab Eb9/Gb Eb-11

3 3

151 152 153 154 155 156 157 158 159 160

172

180

Alto Sax 1

Alto Sax 2

Tenor Sax 1

Tenor Sax 2

Baritone Sax

Trumpet 1

Trumpet 2

Trumpet 3

Trumpet 4

Trombone 1

Trombone 2

Trombone 3

Bass Trombone

Guitar

Piano

Bass

Drum Set

172 173 174 175 176 177 178 179 180 181 182

Alto Sax 1

Alto Sax 2

Tenor Sax 1

Tenor Sax 2

Baritone Sax

Trumpet 1

Trumpet 2

Trumpet 3

Trumpet 4

Trombone 1

Trombone 2

Trombone 3

Bass Trombone

Guitar

Piano

Bass

Drum Set

185 184 185 186 187 188 189 190 191 192 195

(E-II) A^{b5} F#-7/B E-II

Reproduction Prohibited

210 (♩ = 80)

STRAIGHT 8ths

Alto Sax 1

Alto Sax 2

Tenor Sax 1

Tenor Sax 2

Baritone Sax

Trumpet 1

Trumpet 2

Trumpet 3

Trumpet 4

Trombone 1

Trombone 2

Trombone 3

Bass Trombone

Guitar

Piano

Bass

Drum Set

204 205 206 207 208 209 210 211 212 213

SWING (♩ = 150) (217)

Alto Sax 1

Alto Sax 2

Tenor Sax 1

Tenor Sax 2

Baritone Sax

Trumpet 1

Trumpet 2

Trumpet 3

Trumpet 4

Trombone 1

Trombone 2

Trombone 3

Bass Trombone

Guitar

Piano

Bass

Drum Set

214 215 216 217 218 219 220 221 222 223 224

Chord progression: E-11, B-7, E-11, D9/A Eb9/G F6, E-11, B-7, E-11, D9/A Eb9/G F6

Drum Set: FILL, 3, 3

225

Alto Sax 1

Alto Sax 2

Tenor Sax 1

Tenor Sax 2

Baritone Sax

Trumpet 1

Trumpet 2

Trumpet 3

Trumpet 4

Trombone 1

Trombone 2

Trombone 3

Bass Trombone

Guitar

Piano

Bass

Drum Set

225 226 227 228 229 230 231 232 233 234 235 236

E-11 B-7 E-11 D9/A Eb9/G F6 E-11 B-7 E-11 D9/A Eb9/G F6 E-11 B-7 E-11 D9/A Eb9/G F6

Reproduction Prohibited