

CONDUCTOR

FJH JAZZ ENSEMBLE SERIES

Grade 4

Rob Vuono, Jr.

CALLING DR. CHOPS

Instrumentation

Alto Sax 1	Trombone 1
Alto Sax 2	Trombone 2
Tenor Sax 1	Trombone 3
Tenor Sax 2	Bass Trombone
Baritone Sax	Guitar
Trumpet 1	Piano/Organ
Trumpet 2	Bass
Trumpet 3	Drum Set
Trumpet 4	Conductor's Full Score

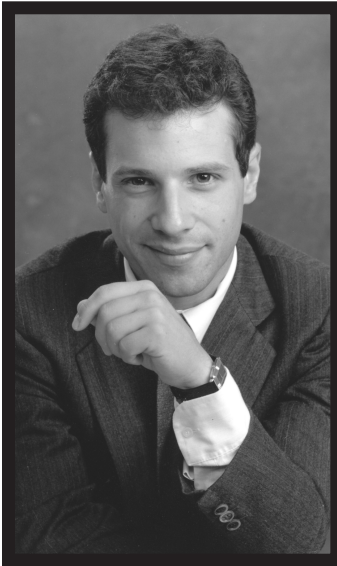
Extra Conductor Score: \$6.00

Extra Parts: \$3.00

Reproduction Prohibited



2525 Davie Road, Suite 360
Fort Lauderdale, Florida 33317-7424



The Composer

Composer and arranger Rob Vuono, Jr. received his formal training at both the Manhattan School of Music and Mannes College of Music, studying classical composition and orchestration with Dr. Leo Edwards, Giampaolo Bracali, and David Loeb. Additionally, Rob studied arranging with Johnny Carisi, Jo Boyer, and Gil Evans. Rob has freelanced as a writer and performer in the New York area and was active as a jazz studies instructor for the International Art of Jazz program and director of the Stony Brook Jazz Ensemble at SUNY, Stony Brook, New York.

In 1986, Rob was hired as a writer and performer for the U.S. Navy Band, eventually securing the job of chief arranger for the U.S. Naval Academy Band in 1994. Rob has written for a wide variety of performers and ensembles, including orchestra, jazz ensemble, wind ensemble, choral, and chamber ensemble. An accomplished trumpet and piano instrumentalist, Rob is currently active as a writer, performer, and band leader, releasing recordings of arrangements by his own big band.

About the Music

This chart is a groove tune. The most important thing is the subdivided beat. Too much volume will ruin it for sure. With regard to the horn parts, it would be best if the rhythm section follows their parts as written as they lock in the groove. The horns should rest atop the rhythm section. That is not to say that the intensity should drop, but rather that the intensity is derived from the accuracy of the subdivided beat, as everything locks together like a jigsaw puzzle. The rhythm section can have fun during the first part of each solo before the horn backgrounds come in. For example, stopping on beat 1 and returning on the upbeat of beat 3 works well.

CALLING DR. CHOPS

ROB VUONO, JR.

FUNK/ROCK (♩ = 120)

4

Alto Sax 1

Alto Sax 2

Tenor Sax 1

Tenor Sax 2

Baritone Sax

Trumpet 1

Trumpet 2

Trumpet 3

Trumpet 4

Trombone 1

Trombone 2

Trombone 3

Bass Trombone

Guitar

Piano/ Organ

Bass

Drum Set

CHORDS APPEAR IN PART THROUGH 5

Guitar Chords: G7(#9), C7(#11), Bb7(#11), C7(#11), C7Acc2, Bb7+7Acc2, C7Acc2, Bb7+7Acc2, C7Acc2, Bb7+7Acc2

Drum Set: FILL, SNARE, HI-HAT, TOMS

Copyright © 2002 The FJH Music Company Inc.

International Copyright Secured. Made in U.S.A. All Rights Reserved.

WARNING! This arrangement is protected by copyright law. Copying or reproducing it by any method without the publisher's written permission is an infringement of copyright law. Anyone who reproduces copyrighted materials is subject to substantial penalties for each infringement.

Alto Sax 1

Alto Sax 2

Tenor Sax 1

Tenor Sax 2

Baritone Sax

Trumpet 1

Trumpet 2

Trumpet 3

Trumpet 4

Trombone 1

Trombone 2

Trombone 3

Bass Trombone

Guitar

Piano/Organ

Bass

Drum Set

TENOR SAX 2

PLAY SOLI W/TPT.

SOLI W/TENOR

7 8 9 10 11 12

Chord symbols: C7^{Acc2}, Bb+7^{Acc2}, C7^{Acc2}, Bb7^{Acc2}

Reproduction Prohibited

Alto Sax 1

Alto Sax 2

Tenor Sax 1

Tenor Sax 2

Baritone Sax

Trumpet 1

Trumpet 2

Trumpet 3

Trumpet 4

Trombone 1

Trombone 2

Trombone 3

Bass Trombone

Guitar

Piano/ Organ

Bass

Drum Set

13 14 15 16 17 18

Reproduction Prohibited

Alto Sax 1

Alto Sax 2

Tenor Sax 1

Tenor Sax 2

Baritone Sax

Trumpet 1

Trumpet 2

Trumpet 3

Trumpet 4

Trombone 1

Trombone 2

Trombone 3

Bass Trombone

Guitar

Piano/ Organ

Bass

Drum Set

TENOR SAX 2

PLAY

C7Acc2 Bb+7Acc2 C7Acc2 Bb7Acc2

C7Acc2 Bb+7Acc2 C7Acc2 Bb7Acc2

19 20 21 22 25 24

Alto Sax 1

Alto Sax 2

Tenor Sax 1

Tenor Sax 2

Baritone Sax

Trumpet 1

Trumpet 2

Trumpet 3

Trumpet 4

Trombone 1

Trombone 2

Trombone 3

Bass Trombone

Guitar

Piano/ Organ

Bass

Drum Set

25 26 27 28 29

N.C.

F9

F9sus

(PLAY R.H. ONLY IF NO GUITAR)

L.H. ORGAN

CRASH

RIDE ON BELL

Alto Sax 1

Alto Sax 2

Tenor Sax 1

Tenor Sax 2

Baritone Sax

Trumpet 1

Trumpet 2

Trumpet 3

Trumpet 4

Trombone 1

Trombone 2

Trombone 3

Bass Trombone

Guitar

Piano/Organ

Bass

Drum Set

42 43 44 45 46 47

Alto Sax 1

Alto Sax 2

Tenor Sax 1

Tenor Sax 2

Baritone Sax

Trumpet 1

Trumpet 2

Trumpet 3

Trumpet 4

Trombone 1

Trombone 2

Trombone 3

Bass Trombone

Guitar

Piano/ Organ

Bass

Drum Set

N.C.

F#9

F#9sus6

(PLAY R.H. ONLY IF NO GUITAR)

L.H. ORGAN

RIDE ON BELL

53 54 55 56 57

65

Alto Sax 1

Alto Sax 2

Tenor Sax 1

Tenor Sax 2

Baritone Sax

Trumpet 1

Trumpet 2

Trumpet 3

Trumpet 4

Trombone 1

Trombone 2

Trombone 3

Bass Trombone

Guitar

Piano/Organ

Bass

Drum Set

ESOTERIC HALF-TIME FEEL

SOLO D-11/A

C#-11/A

C-11/A

B-11/A

Bb-11/A

D7(#9)/A

C-11/G

B-11/G

Bb-11/G

A-11/G

Ab-11/G

C7(#9)/G

CHORDS APPEAR IN PART THROUGH 70

ESOTERIC HALF-TIME FEEL (CYMBALS)

65 66 67 68 69 70

72

Alto Sax 1

Alto Sax 2

Tenor Sax 1

Tenor Sax 2

Baritone Sax

Trumpet 1

Trumpet 2

Trumpet 3

Trumpet 4

Trombone 1

Trombone 2

Trombone 3

Bass Trombone

Guitar

Piano/ Organ

Bass

Drum Set

PLAY AS WRITTEN

RESUME SOLO

71 72 73 74 75 76

Chord symbols: $C7_{Acc2}$, $Bb+7_{Acc2}$, $C7_{Acc2}$, $Bb7_{Acc2}$

HI-HAT

Reproduction Prohibited

Alto Sax 1

Alto Sax 2

Tenor Sax 1

Tenor Sax 2

Baritone Sax

Trumpet 1

Trumpet 2

Trumpet 3

Trumpet 4

Trombone 1

Trombone 2

Trombone 3

Bass Trombone

Guitar

Piano/ Organ

Bass

Drum Set

92 95 94 95 96

96

SOLO D7^{Acc2}

G⁹ G^{9sus} END SOLO

F⁹ G⁷(^{#9}/₁₃) C⁷^{Acc2} B^b+7^{Acc2} C⁷^{Acc2} B^b7^{Acc2}

(PLAY R.H.) G⁷(^{#9}/₁₃) C⁷^{Acc2} B^b+7^{Acc2} C⁷^{Acc2} B^b7^{Acc2}

L.H. PIANO

(FILL) HI-HAT

Reproduction Prohibited

Alto Sax 1

Alto Sax 2

Tenor Sax 1

Tenor Sax 2

Baritone Sax

Trumpet 1

Trumpet 2

Trumpet 3

Trumpet 4

Trombone 1

Trombone 2

Trombone 3

Bass Trombone

Guitar

Piano/
Organ

Bass

Drum Set

97 98 99 100 101 102

104

Alto Sax 1

Alto Sax 2

Tenor Sax 1

Tenor Sax 2

Baritone Sax

Trumpet 1

Trumpet 2

Trumpet 3

Trumpet 4

Trombone 1

Trombone 2

Trombone 3

Bass Trombone

Guitar

Piano/Organ

Bass

Drum Set

Chord symbols: $C7_{Acc2}$, $Bb7_{Acc2}$

Reproduction Prohibited

105 104 105 106 107

Alto Sax 1

Alto Sax 2

Tenor Sax 1

Tenor Sax 2

Baritone Sax

Trumpet 1
ME CRES. POCO A POCO

Trumpet 2

Trumpet 3
ME CRES. POCO A POCO

Trumpet 4
ME CRES. POCO A POCO

Trombone 1
CRES. POCO A POCO

Trombone 2
CRES. POCO A POCO

Trombone 3
CRES. POCO A POCO

Bass Trombone
CRES. POCO A POCO

Guitar
CRES. POCO A POCO

Piano/ Organ
CRES. POCO A POCO

Bass
CRES. POCO A POCO

Drum Set
RIDE ON BELL

108 CRES. POCO A POCO

109

110

111

112

REPRODUCTION PROHIBITED

112

G9

N.C.

F9

L.H. ORGAN

Alto Sax 1

Alto Sax 2

Tenor Sax 1

Tenor Sax 2

Baritone Sax

Trumpet 1

Trumpet 2

Trumpet 3

Trumpet 4

Trombone 1

Trombone 2

Trombone 3

Bass Trombone

Guitar

Piano/ Organ

Bass

Drum Set

END SOLO

(PLAY R.H.)

L.H. PIANO

(FILL)

(SOLO FILL)

(SOLO FILL)

118 119 120 121 122 123

Alto Sax 1

Alto Sax 2

Tenor Sax 1

Tenor Sax 2

Baritone Sax

Trumpet 1

Trumpet 2

Trumpet 3

Trumpet 4

Trombone 1

Trombone 2

Trombone 3

Bass Trombone

Guitar

Piano/Organ

Bass

Drum Set

Opt. 8^{va}

N.C.

(PLAY R.H. ONLY IF NO GUITAR)

L.H. ORGAN

SOLO FILL

RIDE ON BELL

124 125 126 127 128

Alto Sax 1

Alto Sax 2

Tenor Sax 1

Tenor Sax 2

Baritone Sax

Trumpet 1

Trumpet 2

Trumpet 3

Trumpet 4

Trombone 1

Trombone 2

Trombone 3

Bass Trombone

Guitar

Piano/Organ

Bass

Drum Set

129 130 131 132 133

Preview Only

Reproduction Prohibited