

# ONCE UPON A BLUES

Timothy Loest

## Instrumentation

- |                    |                          |
|--------------------|--------------------------|
| • Full Score       | • Opt. Trombone 3        |
| • Alto Sax 1       | • Guitar                 |
| • Alto Sax 2       | • Piano                  |
| • Tenor Sax 1      | • Drum Set               |
| • Opt. Tenor Sax 2 | <b>Additional Parts:</b> |
| • Baritone Sax     | • Flute (Tpt. 1)         |
| • Trumpet 1        | • Clarinet (A. Sax. 1)   |
| • Trumpet 2        | • F Horn (Tpt. 2)        |
| • Opt. Trumpet 3   | • Baritone T.C. (Tbn. 1) |
| • Trombone 1       | • Solo Sheet             |
| • Opt. Trombone 2  |                          |

**Extra Conductor Score: \$6.00**

Exclusively distributed by





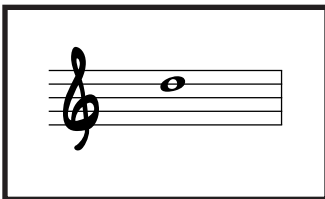
**Timothy Loest** is a name in music synonymous with creativity, versatility, and accessibility. His compositions and arrangements for young band are performed worldwide and his pedagogical methods and conducting appearances continue to impact performers and audiences at the state and national levels.

In 2017, his work *Cloud Gate (Reflections of a City)* was performed for more than 5,000 spectators at Chicago's Millennium Park. That same year, he received the Illinois Grade School Music Association's highest honor – the Cloyd Myers Memorial Award for Excellence in Music Education.

Mr. Loest had his first work published in 1995 and today he is an exclusive writer for The FJH Music Company Inc. He co-authored *Measures of Success®: A Comprehensive Musicianship Band Method*, and is lead author of "The Beyond Series," which includes *Warm-ups and Beyond*, *Rhythms and Beyond*, and *Chorales and Beyond*.

Mr. Loest received his Bachelor of Music Education degree from Illinois State University and his Master of Music Education degree from Northwestern University. He holds membership in NAFME, ASCAP, Illinois MEA, the Illinois Grade School Music Association, and Christian Educators Association International. He is band director at F.E. Peacock Middle School in Itasca, Illinois, and resides in Wheaton, Illinois with his wife Cindy and their two sons.

### Trumpet 1 Range:



## About the Music

Many people will tell you that a great teacher changed their life for the better. For some, that teacher made the classroom a safe place where learning was a fantastic journey. For others, that teacher was a steadfast motivator who inspired hard work along with the successful completion of goals. In this regard, I consider myself abundantly blessed, as I have had many teachers who saw potential in me that I could not see. One of those teachers is Mr. Paul Tolosko, a retired band director who taught most of his career at Proviso West High School in Hillside, Illinois. Known to his students as Mr. T, he could always bring out the swing in all of us.

*Once Upon A Blues* is a medium swing twelve-bar blues. Composed for young musicians, it contains the structure and elements of more advanced works, including a "head" (main theme), "blue" notes, a solo section with backgrounds, a stop-time soft shout chorus, and a full blast recapitulation of the head where the band gets to "wail" (perform exceptionally tight and loud).

An authentic performance depends on everyone playing in time, while executing articulations with precision and consistency. In addition, eighth note pairs need to maintain a triplet feel (doo-da, doo-da, etc.). In jazz, the hi-hat is the beacon of time keeping. In the first twelve bars, it should be pedaled open on beats 1 and 3, and closed on beats 2 and 4. If desired, the left hand can assist the left foot during this section by pinching the hi-hat shut on beats 2 and 4, while the right hand plays the written pattern.

A hallmark of jazz is the improvised solo and there are many ways to create one. In a theme and variation approach, the soloist plays the head but with added embellishments. In a guide note approach, the soloist is given (or chooses) a limited number of guide notes that are played over the chord changes using jazzy rhythms. Another more theoretical approach requires that the soloist first memorize, and then play scale or arpeggio patterns while reading the chord changes. Because these approaches can take time and patience to master, written solos have been provided.

All beginnings are important. And, should this work be your first introduction to jazz, it is hoped that your future encounters with this genuine American art form be fulfilling and lifelong. As my friend Mr. T says, "There's one word: swing!"

Listen to the recording of this work at [www.fjhmusic.com](http://www.fjhmusic.com)

or scan this code to access the MP3 directly:



# ONCE UPON A BLUES

For Paul Tolosko (AKA "Mr. T")

TIMOTHY LOEST  
(ASCAP)

MEDIUM SWING (♩ = 126)

ALTO SAX 1

ALTO SAX 2

TENOR SAX 1

OPT TENOR SAX 2

OPT BARI SAX

TRUMPET 1

TRUMPET 2

OPT TRUMPET 3

TROMBONE 1

OPT TROMBONE 2

OPT TROMBONE 3

GUITAR

PIANO

BASS

DRUM SET

HI-HAT

*mf*

♩ = OPEN, + = CLOSED

2 3 4 5

Reproduction Prohibited



Copyright © 2020 **HXmusic - Timothy Loest**  
All Rights Administered by The FJH Music Company Inc. (ASCAP).  
International Copyright Secured. All Rights Reserved.  
Printed in U.S.A. [www.fjhmusic.com](http://www.fjhmusic.com)

HX9013

Musical score for 'Once Upon a Blues' featuring Alto Sax, Tenor Sax, Barisax, Trumpet, Trombone, Guitar, Piano, Bass, and Drum Set. The score is arranged in a standard orchestral format with multiple staves for each instrument. The key signature is one flat (Bb) and the time signature is 4/4. The score includes a large 'PREVIEW' watermark across the center. The guitar part includes chord markings: Bb7, F7, Eb7, and Bb7. The piano part includes a melodic line and a bass line with chord markings: Bb7, F7, Eb7, and Bb7. The bass part includes a walking bass line. The drum set part includes a simple rhythmic pattern.

6 7 8 9 10 11  
Reproduction Prohibited

13

Musical score for 'Once Upon a Blues' featuring Alto Sax, Trumpet, Trombone, Guitar, Piano, Bass, and Drum Set. The score is in 4/4 time and includes various instruments and their parts.

**ALTO SAX 1**  
**ALTO SAX 2**  
**TENOR SAX 1**  
**TENOR SAX 2**  
**BARISAX**

**TRUMPET 1**  
**TRUMPET 2**  
**TRUMPET 3**

**TROMBONE 1**  
**TROMBONE 2**  
**TROMBONE 3**

**GUITAR**

**PIANO**

**BASS**

**DRUM SET**

Reproduction Prohibited

Musical score for 'Once Upon a Blues' featuring Alto Sax, Trumpet, Trombone, Guitar, Piano, Bass, and Drum Set. The score is arranged in a standard orchestral layout with five systems. The first system includes Alto Sax 1, Alto Sax 2, Tenor Sax 1, Tenor Sax 2, and Barisax. The second system includes Trumpet 1, Trumpet 2, and Trumpet 3. The third system includes Trombone 1, Trombone 2, and Trombone 3. The fourth system includes Guitar and Piano. The fifth system includes Bass and Drum Set. The score is in 4/4 time and features a variety of musical notations including notes, rests, and dynamic markings. A large 'REPRODUCTION PROHIBITED' watermark is overlaid across the center of the page.

25

Musical score for 'Once Upon a Blues', page 7. The score includes parts for Alto Sax 1 & 2, Tenor Sax 1 & 2, Barisax, Trumpet 1, 2, & 3, Trombone 1, 2, & 3, Guitar, Piano, Bass, and Drum Set. The music is in 4/4 time with a key signature of one sharp (F#). A rehearsal mark '25' is present at the top. The saxophones play a melodic line starting at measure 25 with a *mf* dynamic. The brass instruments play a rhythmic accompaniment. The guitar and piano provide harmonic support with chords and textures. The bass and drum set provide the foundation. A large 'PREVIEW' watermark is overlaid on the score.

22 23 24 25 26

Reproduction Prohibited

Musical score for 'Once Upon a Blues' featuring Alto Sax, Tenor Sax, Barisax, Trumpet, Trombone, Guitar, Piano, Bass, and Drum Set. The score is arranged in a standard orchestral format with multiple staves for each instrument. The key signature is one sharp (F#) and the time signature is 4/4. The score includes measures 27 through 31. A large watermark 'REPRODUCTION PROHIBITED' is overlaid across the center of the page.

ALTO SAX 1

ALTO SAX 2

TENOR SAX 1

TENOR SAX 2

BARISAX

TRUMPET 1

TRUMPET 2

TRUMPET 3

TROMBONE 1

TROMBONE 2

TROMBONE 3

GUITAR

PIANO

BASS

DRUM SET

27 28 29 30 31



Musical score for 'Once Upon a Blues' featuring saxophones, trumpets, trombones, guitar, piano, bass, and drums. The score is arranged in a standard orchestral layout with multiple staves for each instrument. The key signature is one sharp (F#) and the time signature is 4/4. The saxophone section (Alto, Tenor, Baritone) plays a melodic line with eighth and quarter notes. The trumpet and trombone sections provide harmonic support with chords and rhythmic patterns. The guitar and piano parts are primarily chordal, with the piano also featuring a bass line. The bass and drum set parts provide the rhythmic foundation. The score includes measure numbers 32 through 36 and chord symbols such as F13, Eb13, Bb13, and F7(#5). A large 'PREVIEW' watermark is overlaid diagonally across the score.

Reproduction Prohibited

37 OPEN FOR SOLOS

BACKGROUNDS ON CUE - NO BACKGROUNDS ON RHYTHM SEC. SOLOS

Musical score for various instruments including Alto Sax 1 & 2, Tenor Sax 1 & 2, Barisax, Trumpet 1, 2, & 3, Trombone 1, 2, & 3, Guitar, Piano, Bass, and Drum Set. The score includes dynamic markings (fp, f, mp) and performance instructions.

**PREVIEW**

37 *mp* 38 39 40

*mp* PLAY CHORDS AS WRITTEN BEHIND SOLOS

*mp* S.D. CROSS STICK, BEAT 2. TOM, BEAT 4+

OPT. SOLO

Musical score for 'Once Upon a Blues' featuring the following instruments and parts:

- ALTO SAX 1
- ALTO SAX 2
- TENOR SAX 1
- TENOR SAX 2
- BARISAX
- TRUMPET 1
- TRUMPET 2
- TRUMPET 3
- TROMBONE 1
- TROMBONE 2
- TROMBONE 3
- GIUITAR (Chords: Eb7, Bb7, F7)
- PIANO
- BASS
- DRUM SET

The score includes dynamics such as *fp*, *f*, *mf*, and accents. Measure numbers 41, 42, 43, 44, and 45 are indicated at the bottom of the page.

Reproduction Prohibited

Musical score for 'Once Upon a Blues' featuring Alto Sax, Trumpet, Trombone, Guitar, Piano, Bass, and Drum Set. The score is divided into three systems, each with a first ending and a 'LAST X' section. The key signature is one flat (Bb), and the time signature is 4/4. The instruments are: ALTO SAX 1, ALTO SAX 2, TENOR SAX 1, TENOR SAX 2, BARISAX, TRUMPET 1, TRUMPET 2, TRUMPET 3, TROMBONE 1, TROMBONE 2, TROMBONE 3, GUITAR, PIANO, and BASS. The Drum Set part includes measures 46, 47, 48, and 49. A large 'PREVIEW' watermark is overlaid on the score.

50 SOFT SHOUT

Musical score for 'Once Upon a Blues' featuring saxophones, trumpets, trombones, guitar, piano, bass, and drums. The score is for measures 50-54. The key signature is one sharp (F#) and the time signature is 4/4. The saxophone parts (Alto Sax 1 & 2, Tenor Sax 1 & 2, Barisax) and Trombone 1 & 2 parts are in treble clef with a key signature of one sharp. The Trombone 3, Guitar, Piano, and Bass parts are in bass clef with a key signature of two flats (Bb). The Drum Set part is in common time. The score includes dynamics such as *p* (piano) and accents. A large watermark 'REPRODUCTION PROHIBITED' is overlaid on the score.

50 51 52 53 54  
Reproduction Prohibited

Musical score for 'Once Upon a Blues' featuring Alto Sax, Tenor Sax, Barisax, Trumpet, Trombone, Guitar, Piano, Bass, and Drum Set. The score is in 4/4 time and includes measures 55 through 59. A large 'PREVIEW' watermark is overlaid on the score.

Reproduction Prohibited

(62)

Musical score for 'Once Upon a Blues', page 15. The score is arranged for a jazz ensemble and includes the following parts:

- ALTO SAX 1
- ALTO SAX 2
- TENOR SAX 1
- TENOR SAX 2
- BARISAX
- TRUMPET 1
- TRUMPET 2
- TRUMPET 3
- TROMBONE 1
- TROMBONE 2
- TROMBONE 3
- GIUITAR
- PIANO
- BASS
- DRUM SET

The score is marked with a rehearsal sign (62) at the beginning of the section. A large 'PREVIEW' watermark is overlaid diagonally across the page. The music includes various dynamics such as *mf* and *f*, and features a 'STICK SHOT' instruction for the drum set. The guitar part includes chord changes to  $Bb13$  and  $Eb13$ . The drum set part includes a '3' (triplets) and a 'STICK SHOT' instruction.

Reproduction Prohibited

Musical score for 'Once Upon a Blues' featuring Alto Sax, Tenor Sax, Barisax, Trumpet, Trombone, Guitar, Piano, Bass, and Drum Set. The score is in 4/4 time and includes a large 'REPRODUCTION PROHIBITED' watermark.

Instrument parts include:

- ALTO SAX 1
- ALTO SAX 2
- TENOR SAX 1
- TENOR SAX 2
- BARISAX
- TRUMPET 1
- TRUMPET 2
- TRUMPET 3
- TROMBONE 1
- TROMBONE 2
- TROMBONE 3
- GIUITAR
- PIANO
- BASS
- DRUM SET

Chord changes for GUITAR and PIANO:

- 64: Bb13
- 65: Bb13
- 66: Eb13
- 67: E07
- 68: Bb13

Measure numbers 64, 65, 66, 67, and 68 are indicated at the bottom of the score.



Musical score for 'Once Upon a Blues' featuring Alto Sax, Tenor Sax, Barisax, Trumpet, Trombone, Guitar, Piano, Bass, and Drum Set. The score is in 4/4 time and includes various musical notations such as notes, rests, and dynamics. A large watermark 'REPRODUCTION PROHIBITED' is overlaid across the score.

ALTO SAX 1

ALTO SAX 2

TENOR SAX 1

TENOR SAX 2

BARISAX

TRUMPET 1

TRUMPET 2

TRUMPET 3

TROMBONE 1

TROMBONE 2

TROMBONE 3

GUITAR

PIANO

BASS

DRUM SET

69 70 71 72 73

ALTO SAX 1

ALTO SAX 2

TENOR SAX 1

TENOR SAX 2

BARISAX

TRUMPET 1

TRUMPET 2

TRUMPET 3

TROMBONE 1

TROMBONE 2

TROMBONE 3

GIUITAR

PIANO

BASS

DRUM SET

74 75 76 77

STICK SHOT

PLAY ON CUTOFF

REPRODUCTION PROHIBITED

### Solo Sheet

#### E-flat Treble Instruments

Musical notation for E-flat Treble Instruments, measures 37-45. The key signature is one sharp (F#) and the time signature is 4/4. The notation includes dynamic markings (mp, mf, f) and chord symbols (G7, C7, D7, D7(#5)).

Measures 37-40: *mp* G7 C7 G7

Measures 41-44: *mf* C7 G7

Measures 45-48: *f* D7 C7 G7 D7(#5)

#### B-flat Treble Instruments

Musical notation for B-flat Treble Instruments, measures 37-45. The key signature is one sharp (F#) and the time signature is 4/4. The notation includes dynamic markings (mp, mf) and chord symbols (C7, F7, G7, G7(#5)).

Measures 37-40: *mp* C7 F7 C7

Measures 41-44: *mf* F7 C7

Measures 45-48: *f* G7 F7 C7 G7(#5)

Reproduction Prohibited

C Bass Instruments

(37) *B $\flat$ 7* *E $\flat$ 7* *B $\flat$ 7*

*mp*

41 *E $\flat$ 7* *B $\flat$ 7*

*mf*

45 *F7* *E $\flat$ 7* *B $\flat$ 7* *F7(#5)*

*f*

C Treble Instruments

(37) *B $\flat$ 7* *E $\flat$ 7* *B $\flat$ 7*

*mp*

41 *E $\flat$ 7* *B $\flat$ 7*

*mf*

45 *F7* *E $\flat$ 7* *B $\flat$ 7* *F7(#5)*

*f*

F Treble Instruments

(37) *F7* *B $\flat$ 7* *F7*

*mp*

41 *B $\flat$ 7* *F7*

*mf*

45 *C7* *B $\flat$ 7* *F7* *C7(#5)*

*f*