

## Performance Notes

### Movement I:

All slashed notes are to be played as quickly as possible.

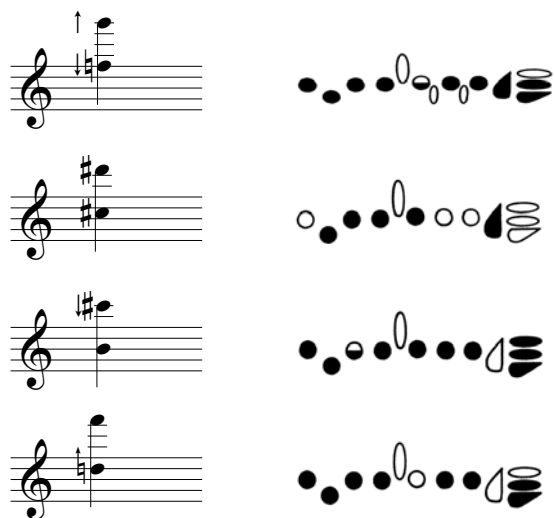
A = alternate fingering(s): Choose a fingering which provides the greatest timbral and intonational variety (consistency of intonation is not a concern). If two such indications appear sequentially, the fingerings *should not* be the same (e.g., mm. 2, 6, 11, 14, etc.).


hard air (mm.15, 23-29, 37-38, 42): a very hard air attack


N = *normale* (after a harmonic)

o = harmonic

Multiphonic fingerings:



 = flutter tongue

 = breathy, airy sound

↑ ↓ = pitch bend (roll)

### Movement III:

All slashed notes are to be played as quickly as possible. A dotted slash indicates quickly, but unevenly.

t.s. = tongue stop: Cover the embouchure hole completely with the lips and push the tongue forward, through the lips, into the embouchure hole. The resulting pitch will be a major seventh lower than the fingered pitch.

pz. = tongue pizzicato: With very firm lips, stick the tongue out through them and pull it back in rapidly. As the air rushes in to the mouth, a short popping ("*pizzicato*") sounds results.

+ = key slap: Quickly and percussively close the keys of the flute while covering the embouchure hole completely with the mouth. The resulting pitch will be a major seventh lower than the fingered pitch.

*Special thanks to Joshua Smith for his assistance in determining the multiphonic fingerings.*

46 *mp* 3 *mf* *p* *pp* *p* 5 *pp*

48 *p intimate* *rit....* 3 *sotto voce, darkly* *(roll)* *(.)* *niente*

More then most faire, full of the living fire,  
 Kindled above unto the maker neere:  
 No eies but joyes, in which al powers conspire,  
 That to the world naught else be counted deare.  
 Through your bright beams doth not the blinded guest  
 Shoot out his darts to base affections wound?  
 But Angels come to lead fraile mindes to rest  
 In chaste desires on heavenly beauty bound.  
 You frame my thoughts and fashion me within,  
 You stop my toung, and teach my hart to speake,  
 You calme the storme that passion did begin,  
 Strong thugh your cause, but by your vertue weak.  
 Dark is the world, where your light shined never;  
 Well is he borne, that may behold you ever.

- Edmund Spenser (1594)

9

t.s. pz. t.s. dolce 5 6 tr *f* *p* *mp* *pp* *p* gentle

3 *f* *p* 5 rit. ...

10

a tempo dark 3 [key slap/cover emb.] dark dolce 2/3 *p* sotto voce *poco* *p* *mf* *pp* sotto voce *p* [2/3rds of a triplet]

(come sopra) warm, gentle (long pause) *mp* *p* *poco* *p* niente gentle, simply

11

3 3 5 5 3 *p* *mp* *p* *poco* *p* *pp*

12

3 5 3 3 dark rit. al fine. . . *p* *mf* *p* *mp* *p* *p* sotto voce *poco* *p* niente