

'Ukulele at School published by Daniel Ho Creations
www.DanielHo.com

For audio examples, the latest news, and to contact us, please visit:
www.UkuleleAtSchool.com

Written by Steve Sano and Daniel Ho

Music performed and recorded by Daniel Ho

Consultants: Glen Kamida, Lydia Miyashiro-Ho,
Leonard Narumi, Gaby Thomasz, Linda Uyechi

Photo of Steve Sano and Daniel Ho (page 5),
and instructional images by Lydia Miyashiro-Ho

Photo of Steve Sano (page 38) by Linda Cicero, Stanford News Service

Jumping flea illustration by Doug Katsumoto

'Ukuleles in cover photo (left to right):

Baby Naturel 'Ukulele by Yoshihiro Naoki
<http://homepage2.nifty.com/naokky/>

Tiny Tenor 'Ukulele
Designed by Pepe Romero and Daniel Ho
www.RomeroCreations.com

Custom KoAloha Tenor
Polani (Pure), the first solo 'ukulele CD to receive a
GRAMMY nomination, was recorded on this instrument.
www.KoAloha.com

Cover artwork from Daniel Ho's GRAMMY-nominated CD,
On A Gentle Island Breeze, courtesy of Wind Music
www.WindMusic.com.tw

ISBN: 0-9833536-5-4
UPC: 644718011820

EAN: 978-0-9833536-5-2
Catalog number: DHC 80118

© 2014 Daniel Ho Creations • 914 Westwood Boulevard #813 • Los Angeles, CA 90024
All rights reserved. No part of this publication may be reproduced, stored in a retrieval system,
or transmitted in any way or by any means, electronic, mechanical, photocopying, recording or
otherwise, without the prior written consent of the copyright holder.

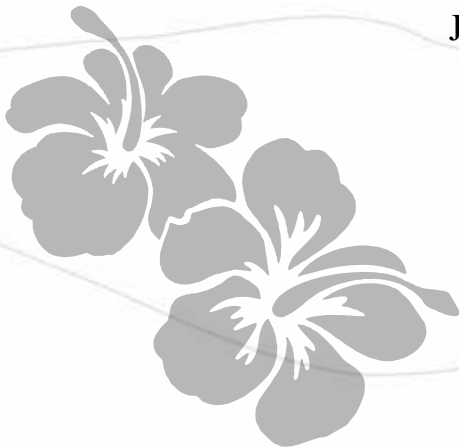


Table of Contents

Aloha Students	6
UNIT 1	
Chapter 1	
Tuning	6
Plucking	7
Chapter 2 (Notes on the 1st String)	
Playing the Note A	8
Playing the Note B	9
Playing the Note C	10
UNIT 2	
Chapter 3 (Notes on the 2nd String)	
Playing the Note E	12
Playing the Note F	13
Playing the Note G	14
Chapter 4	
Crossing Strings	15
UNIT 3	
Chapter 5 (Notes on the 3rd String)	
Playing the Note C	16
Playing the Note D	17
Chapter 6	
<i>Michael Row the Boat Ashore</i>	18
UNIT 4	
Chapter 7 (Notes on the 4th String)	
Playing the Note G	20
Playing the Note A	21
Playing the Note B	22
Chapter 8	
<i>Simple Gifts</i>	23
UNIT 5	
Chapter 9	
Playing the Note B ^b	24
Chapter 10	
<i>Clementine</i>	24
Chapter 11	
<i>Home on the Range</i>	26

UNIT 5 (continued)

Chapter 12	
<i>Amazing Grace</i>	28
Chapter 13	
<i>Oh! Susanna</i>	30
Chapter 14	
Playing the Note B ^b	32
Chapter 15	
Diagram of Notes	33
Chapter 16	
<i>The Ash Grove</i>	34
Chapter 17	
<i>When the Saints Go Marching In</i>	36
Chord Chart	38
<i>Ho‘omaika‘i ‘Ana!</i>	38



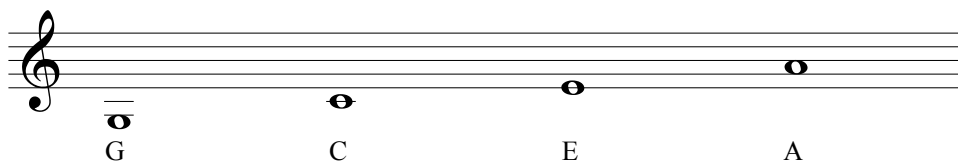
Aloha Teachers

Welcome to the teacher's guide to *'Ukulele at School, Book 2*. With this book, we build upon the foundation laid in the first volume and delve into the fundamentals of reading standard notation in the treble clef. Due to the increased technical nature of learning to read pitches on the staff and then reproducing them in the context of a melody, the descriptive apparatus in the student's volume is more detailed and lengthy than in the first book. We recommend carefully reading through this material with your students to help guide them through the process of digesting this information.

As with the first volume, this book is designed to cover a typical academic semester of 15-18 weeks' length, with a 30-45 minute class meeting once a week. The material is organized into chapters, with the chapters grouped into units. Each unit is built around similar or related topics and concepts. You should feel completely free to scale, adapt, and pace the material according to your individual situation. Much of this volume is linked to material in the first book, and we frequently refer to specific pages and chapters in *'Ukulele at School, Book 1*. In this teacher's manual, the material in the student's book is reproduced in full, and enclosed in a gray outline so you can see exactly what's presented to the student. The audio examples, designated by icons and track numbers in the left margins, are available as MP3 files at www.UkuleleAtSchool.com. We welcome your feedback and questions, and will keep you updated with the latest news at our website. As always, we hope you enjoy bringing the world of the 'ukulele to your students. It's been our great pleasure and privilege preparing these books for you!

Tuning

To learn the material in this book, your students will need their 'ukuleles set up with linear tuning: the 4th string tuned to the G a perfect 4th below the 3rd string. Low G strings can be purchased at most music stores.




Aloha Students

Welcome to the next step of your adventure in learning to play the 'ukulele! This is a follow-up to our earlier book, *'Ukulele at School, Book 1* (www.UkuleleAtSchool.com). In this second book, you will learn to play melodies as well as some of the basics of reading music. Because this book is based upon ideas you learned earlier, we recommend reviewing material from the previous book. Remind yourself of basics: how to hold the 'ukulele, how to use your left hand, and how to strum rhythms. It is important to have a solid foundation upon which to build the new skills you will learn in this book. We will also return to many of the songs you learned in the first book—not only will you learn new ways to play them, you and your classmates will be able to play both the new and old versions together as duets.

Remember to listen carefully to your teacher, and don't be afraid to ask questions if you need something explained again. We hope you enjoy learning even more about this wonderful, little instrument!

Aloha, 

Mahalo, 

Unit 1, Chapter 1: Tuning

Since you are already familiar with the basics of playing the 'ukulele, we want to introduce you to a slightly more advanced detail in tuning the instrument. To learn the ideas in this book, your 'ukulele will need what is called a **low G string**. That is, the fourth string (the string closest to your nose), should be tuned below the third string. Your teacher can show you how this works. Since not all 'ukuleles come strung this way, you might need to change the string on your instrument to the appropriate kind.

Your teacher will help you tune your 'ukulele. Listen carefully to the pitch of the string your teacher plays, then turn the correct tuner on your 'ukulele until the pitch matches your teacher's. If you are playing your 'ukulele at home, you can tune it to the audio example *track 1* at www.UkuleleAtSchool.com.



Plucking

In contrast to *'Ukulele at School, Book 1*, one major change in technique presented in this volume requires the student to pluck instead of strum. Help your students learn to navigate the spacing of the strings so they are able to accurately pluck the correct string at the correct time.

Plucking

In the previous book, you learned how to strum. In this book, you'll learn to pluck individual strings. The easiest way to start doing this is to use your right-hand thumb. Use a downward motion and play on either your fingernail or the flesh of your thumb.

