

# TECTONIC PLATES

Adrian B. Sims

## Instrumentation

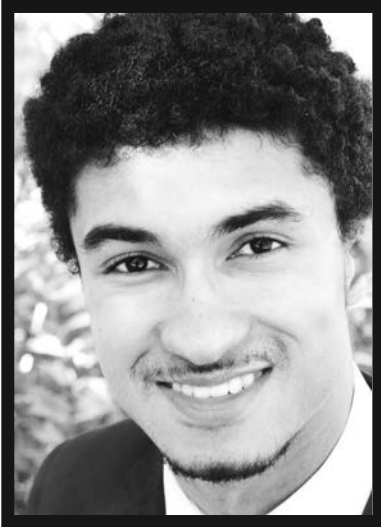
1 - Full Score	2 - Trombone 3
4 - Flute 1	2 - Baritone / Euphonium
4 - Flute 2	2 - Baritone T.C.
2 - Oboe	4 - Tuba
2 - Bassoon	1 - String Bass
4 - B $\flat$ Clarinet 1	1 - Timpani
4 - B $\flat$ Clarinet 2	2 - Mallet Percussion 1 Marimba Xylophone
4 - B $\flat$ Clarinet 3	2 - Mallet Percussion 2 Chimes Bells
2 - B $\flat$ Bass Clarinet	3 - Percussion 1 Snare Drum Concert Toms Bass Drum
2 - E $\flat$ Alto Saxophone 1	3 - Percussion 2 Tambourine Cabasa Suspended Cymbal Tam-tam Triangle
2 - E $\flat$ Alto Saxophone 2	
2 - B $\flat$ Tenor Saxophone	
2 - E $\flat$ Baritone Saxophone	
3 - B $\flat$ Trumpet 1	
3 - B $\flat$ Trumpet 2	
3 - B $\flat$ Trumpet 3	
2 - F Horn 1	
2 - F Horn 2	
2 - Trombone 1	
2 - Trombone 2	

FJH is now using a high-speed sorting system for parts.  
As a result, all single page parts are collated before multiple page parts.

T H E  
F · J · H  
MUSIC  
COMPANY  
I N C.

Frank J. Hackinson

2525 Davie Road, Suite 360  
Fort Lauderdale, Florida 33317-7424  
www.fjhmusic.com



## The Composer

Adrian B. Sims (b. 2000), born in Seattle, Washington is an emerging composer, conductor, educator, and trombonist. Adrian graduated from Catonsville High School (class of 2018) located in Catonsville, Maryland. His music has been played at The Midwest Band and Orchestra Clinic and selected for the Bandworld Top 100 List. Adrian has also been selected as a winner in multiple composition competitions including the Maryland Music Educators Association Young Composers Project and the Make Music Young Composers Contest. On many occasions, he has rehearsed and conducted his music in performances at schools across the state of Maryland.

As a trombonist, Adrian has performed in a wide variety of musical ensembles including pit and symphony orchestras as well as jazz and concert bands. In high school, he was selected to participate in the Maryland All-State Band several times and has played side by side with the Baltimore Symphony Orchestra. He currently plays in the top ensembles at The University of Maryland and studies with Matthew Guilford, solo bass trombonist with the National Symphony Orchestra. Adrian is grateful for the continued support from his band directors Christopher Gnagey and Cindy Stevenson, and is pursuing a dual degree in Music Education and Composition at The University of Maryland. He credits Dr. Robert Gibson, Professor of Composition at The University of Maryland, and world-renowned composer Brian Balmages for his development as a composer.

---

## Program Notes

*Tectonic Plates*, commissioned by the Howard County Elementary School GT Band, illustrates the movement of the mantle and crust beneath the earth's surface. Filled with excitement and unpredictability, this work will take listeners on a journey through the inner workings of planet earth.

The beginning of the work hints at seismic activity, characterized by the dynamic swells in the brass and percussion. As the piece progresses, the tectonic activity stimulates an earthquake, disrupting everything that has taken place thus far. Though many natural occurrences cause destruction, they can also contribute to our world's beauty. As represented near the end of the work, the colliding plates bring about the beautiful landscapes, mountains, and oceans on earth.

- Adrian B. Sims

# TECTONIC PLATES

ADRIAN B. SIMS  
(ASCAP)

With motion (♩ = 168)

5

Flutes 1 2

Oboe

Bassoon

B♭ Clarinets 1 2 3

B♭ Bass Clarinet

E♭ Alto Saxophones 1 2

B♭ Tenor Saxophone

E♭ Baritone Saxophone

*mf* *a2* *p*

*mf* *a2* *mf*

*mf* *a2* *mp* *f*

With motion (♩ = 168)

5

B♭ Trumpets 1 2 3

F Horn 1 2

Trombones 1 2 3

Baritone / Euphonium

Tuba String Bass

Timpani (F, G, C, D)

Mallet Percussion 1 (Marimba, Xylophone)

Mallet Percussion 2 (Chimes, Bells)

Percussion 1 (Snare Drum, Concert Toms, Bass Drum)

Percussion 2 (Tambourine, Cabasa, Suspended Cymbal, Tam-tam, Triangle)

*mf* *a2* *p*

*mf* *a2* *mp* *f*

*mp* *f*

*mp* *f*

*mp* *f*

*pp* *ff*

*pp* *ff*

Sus. Cym. *pp* *3 f*



Hear and download this piece at [www.fjhmusic.com](http://www.fjhmusic.com)

Copyright © 2020 The FJH Music Company Inc. (ASCAP).  
International Copyright Secured. Made in U.S.A. All Rights Reserved.  
WARNING! The music, text, design, and graphics in this publication are protected by copyright law.  
Any duplication is an infringement of U.S. copyright law.

Fls. 1 2

Ob.

Bsn.

Cl. 1 2 3

B. Cl.

A. Saxes. 1 2

T. Sax.

B. Sax.

Tpts. 1 2 3

Hn. 1 2

Tbns. 1 2 3

Bar. / Euph.

Tuba St. Bass

Timp.

Mlt. Perc. 1

Mlt. Perc. 2

Perc. 1

Perc. 2

8 9 10 11 12 13 14

17

Fls. 1 2

Ob.

Bsn.

Cls. 1 2 3

B. Cl.

A. Saxes. 1 2

T. Sax.

B. Sax.

Hn.

*mf*

17

Tpts. 1 2 3

Hn. 1 2

Tbns. 1 2 3

Bar. / Euph.

Tuba / St. Bass

Timp.

Mlt. Perc. 1

Mlt. Perc. 2

Perc. 1

Perc. 2

*mf*

*mf*

*mf*

*mf*

*mf*

*mf*

*mf*

*mf*

*mf*

15 16 *p* 17 *mf* 18 19 20 21

24

Fls. 1 2

Ob.

Bsn.

Cls. 1 2 3

B. Cl.

A. Saxes. 1 2

T. Sax.

B. Sax.

24

Tpts. 1 2 3

Hn. 1 2

Tbns. 1 2 3

Bar. / Euph.

Tuba St. Bass

Timp.

Mlt. Perc. 1

Mlt. Perc. 2

Perc. 1

Perc. 2

22 23 *pp* 24 *mf* 25 26 27 28



Fls. 1 2

Ob.

Bsn.

Cls. 1 2 3

B. Cl.

A. Saxes. 1 2

T. Sax.

B. Sax.

*mp* *f* *mf*

Tpts. 1 2 3

Hn. 1 2

Tbns. 1 2 3

Bar. / Euph.

Tuba St. Bass

Timp.

Mlt. Perc. 1

Mlt. Perc. 2

Perc. 1

Perc. 2

*mf* *f* *mf*

*mp* *f* *mf*

*mp* *f* *mf*

*mp* *f* *mf*

*mf* to Xylo.

*mf*

*mf*





Fls. 1 2

Ob.

Bsn.

Cl. 1 2 3

B. Cl.

A. Saxes. 1 2

T. Sax.

B. Sax.

Tpts. 1 2 3

Hn. 1 2

Tbns. 1 2 3

Bar. / Euph.

Tuba St. Bass

Timp.

Mlt. Perc. 1

Mlt. Perc. 2

Perc. 1

Perc. 2

*mf*

*mf*

*mf*

*ff*

*(mf)*

50 51 52 53 54 55

56

Fls. 1 2

Ob.

Bsn.

Cls. 1 2 3

B. Cl.

A. Saxes. 1 2

T. Sax.

B. Sax.

56

Tpts. 1 2 3

Hn. 1 2

Tbns. 1 2 3

Bar. / Euph.

Tuba St. Bass

Timp.

Mlt. Perc. 1 to Mar.

Mlt. Perc. 2 to Bells

Perc. 1 S.D. rim

Perc. 2

56 57 58 59 60 61 mp

64

Fls. 1 2

Ob.

Bsn. *mf*

B. Cl.

Cl. 1 2 3 *mf*

B. Cl. *mf*

A. Saxes. 1 2 *mf*

T. Sax. *mf*

B. Sax. *mf*

B. Cl.

64

Tpts. 1 2 3 *mf*

Hn. 1 2

Tbns. 1 2 3

Bar. / Euph.

(-St. Bass) one player

Tuba St. Bass *mf* *mp*

Timp.

Mlt. Perc. 1

Mlt. Perc. 2

Perc. 1

Perc. 2 *mf* to Cabasa

62 63 *p* 64 *mf* 65 66 67 68



This page contains a musical score for a large ensemble, including woodwinds, brass, and percussion. The instruments listed are Flutes (Fls.), Oboe (Ob.), Bassoon (Bsn.), Clarinets (Cls.), Bass Clarinet (B. Cl.), Alto Saxophones (A. Saxes.), Tenor Saxophone (T. Sax.), Baritone Saxophone (B. Sax.), Trumpets (Tpts.), Horns (Hn.), Trombones (Tbns.), Baritone/Euphonium (Bar./Euph.), Tuba/Street Bass (Tuba St. Bass), Timpani (Timp.), and Mallet Percussion (Mlt. Perc. 1, Mlt. Perc. 2, Perc. 1, Perc. 2). The score spans measures 76 to 82. A large red watermark reading "Preview Legal Use Requires Purchase" is overlaid diagonally across the page. Dynamic markings such as *mf*, *ff*, *f*, *p*, and *tutti* are present throughout the score. Performance instructions include "to Ch." for Mallet Percussion 2 and "to Tamb." for Percussion 2. The percussion parts include rhythmic patterns for Mallet Percussion 2 and Percussion 2, and specific notes for Percussion 1.

83

Fls. 1  
2

Ob.

Bsn.

Cl. 1  
2  
3

B. Cl.

A. Saxes. 1  
2

T. Sax.

B. Sax.

83

Tpts. 1  
2  
3

Hn. 1  
2

Tbns. 1  
2  
3

Bar. / Euph.

Tuba  
St. Bass

Timp.

Mlt. Perc. 1  
Xylo.

Mlt. Perc. 2  
Ch.

Perc. 1

Perc. 2  
to Tam-tam

83 84 85 86 *p* 87 *mf* 88 89 90





Fls. 1 2

Ob.

Bsn.

Cls. 1 2 3

B. Cl.

A. Saxes. 1 2

T. Sax.

B. Sax.

Tpts. 1 2 3

Hn. 1 2

Tbns. 1 2 3

Bar. / Euph.

Tuba St. Bass

Timp.

Mlt. Perc. 1

Mlt. Perc. 2

Perc. 1

Perc. 2

*f*

*ff*

*(f)*

*ff*

103

Fls. 1 2

Ob.

Bsn.

Cls. 1 2 3

B. Cl.

A. Saxes. 1 2

T. Sax.

B. Sax.

103

Tpts. 1 2 3

Hn. 1 2

Tbns. 1 2 3

Bar. / Euph.

Tuba St. Bass

Timp.

Mlt. Perc. 1

Mlt. Perc. 2

Perc. 1

Perc. 2

103 *ff* to Sus. Cym. 104 105 106 *p* Sus. Cym. 107 *ff* 108

111

This page contains a musical score for a full orchestra, starting at measure 109 and ending at measure 114. The score is arranged in a multi-staff format with the following instruments and parts:

- Flutes (Fls.):** 1 and 2 staves.
- Oboes (Ob.):** 1 staff.
- Bassoons (Bsn.):** 1 staff.
- Clarinets (Cls.):** 1, 2, and 3 staves.
- Bass Clarinet (B. Cl.):** 1 staff.
- Alto Saxophones (A. Saxes.):** 1 and 2 staves.
- Tenor Saxophone (T. Sax.):** 1 staff.
- Bass Saxophone (B. Sax.):** 1 staff.
- Trumpets (Tpts.):** 1, 2, and 3 staves.
- Horns (Hn.):** 1 and 2 staves.
- Trombones (Tbns.):** 1, 2, and 3 staves.
- Euphonium (Euph.):** 1 staff.
- Tuba and St. Bass (Tuba St. Bass):** 1 staff.
- Timpani (Timp.):** 1 staff.
- Mallet Percussion 1 (Mlt. Perc. 1):** 1 staff.
- Mallet Percussion 2 (Mlt. Perc. 2):** 1 staff.
- Percussion 1 (Perc. 1):** 1 staff, including Snare Drum (S.D.).
- Percussion 2 (Perc. 2):** 1 staff.

The score includes dynamic markings such as *f* (forte), *ff* (fortissimo), *p* (piano), and *mf* (mezzo-forte). Performance instructions include accents (*v*) and breath marks (*h*). A large red watermark reading "Preview Only" is overlaid diagonally across the page. At the bottom, measure numbers 109, 110, 111, 112, 113, and 114 are indicated, with dynamic markings *p* and *ff* positioned below the 110 and 111 measures respectively. The instruction "to Bells" is written above the Mallet Percussion 2 staff at measure 112.

This musical score page contains parts for various instruments. The woodwind section includes Flutes (1 and 2), Oboe, Bassoon, Clarinets (1, 2, and 3), Bass Clarinet, Alto Saxophones (1 and 2), Tenor Saxophone, and Baritone Saxophone. The brass section includes Trumpets (1, 2, and 3), Horns (1 and 2), Trombones (1, 2, and 3), Baritone/Euphonium, and Tuba/Strategic Bass. The percussion section includes Timpani, Multiple Percussion 1 and 2 (with Bells), and two individual Percussion parts (1 and 2). The score is written in a key signature of two flats and a 4/4 time signature. It features dynamic markings such as *mf*, *mp*, *f*, and *ff*, along with articulation marks like accents and slurs. A large red watermark reading "Legal Use Requires Purchase" is overlaid diagonally across the page.



131 135

Fls. 1 2

Ob.

Bsn.

Cl. 1 2 3

B. Cl.

A. Saxes. 1 2

T. Sax.

B. Sax.

131 135

Tpts. 1 2 3

Hn. 1 2

1. opt.

Tbns. 1 2 3

Bar. / Euph.

Tuba St. Bass

div.

Timp.

Mlt. Perc. 1

to Mar.

Mlt. Perc. 2

Ch.

to Bells

Perc. 1

ff mp ff p ff

Perc. 2

130 p 131 ff 132 133 134 p 135 ff 136

Legal Use Requires Purchase

The image shows a page of a musical score for orchestra, spanning measures 137 to 143. The score is written for various instruments, including woodwinds, brass, and percussion. A large, diagonal watermark reading "Preview Only" is overlaid across the page, with the text "Legal Use Requires Purchase" written below it. The score includes dynamic markings such as *ff* (fortissimo) and *p* (piano). The percussion parts include Mlt. Perc. 1, Mlt. Perc. 2, Perc. 1, and Perc. 2. The woodwind parts include Fls. (1 and 2), Ob., Bsn., Cls. (1, 2, 3), B. Cl., A. Saxes. (1 and 2), T. Sax., and B. Sax. The brass parts include Tpts. (1, 2, 3), Hn. (1, 2), Tbns. (1, 2, 3), Bar./Euph., and Tuba/St. Bass. The timpani part is labeled Timp. The score is in a key with one flat and a 4/4 time signature. The measures are numbered 137, 138, 139, 140, 141, 142, and 143. In measure 143, there are dynamic markings *p* for Perc. 1 and Perc. 2.













180 a tempo

Fls. 1 2 *ff*

Ob. *ff*

Bsn. *ff*

Cls. 1 2 3 *ff*

B. Cl. *ff*

A. Saxes. 1 2 *ff*

T. Sax. *ff*

B. Sax. *ff*

180 a tempo

Tpts. 1 2 3 *ff*

Hn. 1 2 *ff*

Tbns. 1 2 3 *ff*

Bar. / Euph. *ff*

Tuba St. Bass *ff*

Timp. *ff*

Mlt. Perc. 1 *ff* Xylo. *ff*

Mlt. Perc. 2 *ff*

Perc. 1 *ff* *mf* *ff*

Perc. 2 *ff*

180 *ff* 181 182 *p* 183 184 *ff* 185



196

Fls. 1 2

Ob.

Bsn.

ff

Cls. 1 2 3

B. Cl.

ff

A. Saxes. 1 2

T. Sax.

B. Sax.

ff

ff

196

Tpts. 1 2 3

Hn. 1 2

ff

Tbns. 1 2 3

ff

Bar. / Euph.

ff

Tuba St. Bass

ff

Timp.

ff

Mit. Perc. 1

Mit. Perc. 2

to Ch.

Perc. 1

ff

Perc. 2

ff

192 193 194 195 196 197

