

COURTLY DANCE AND PROCESSION

Brian Balmages

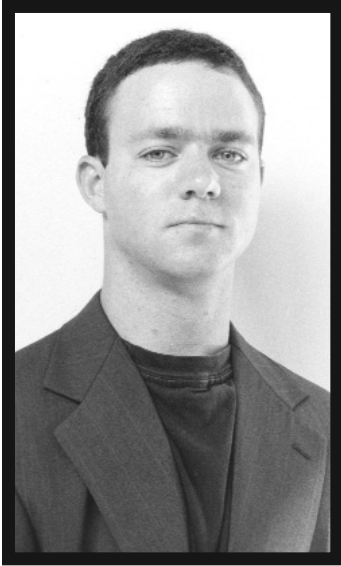
Instrumentation

1 - Conductor's Full Score	6 - Trombone
8 - Flute	2 - Baritone/ Euphonium
2 - Oboe	2 - Baritone T.C.
1 - Bassoon	3 - Tuba
4 - B \flat Clarinet 1	2 - Bells
4 - Opt. B \flat Clarinet 2	4 - Snare Drum Bass Drum
2 - B \flat Bass Clarinet	2 - Tambourine Wood Block
6 - E \flat Alto Saxophone	2 - Crash Cymbals Triangle
2 - B \flat Tenor Saxophone	
1 - E \flat Baritone Saxophone	
4 - B \flat Trumpet 1	
4 - Opt. B \flat Trumpet 2	
3 - F Horn	

FJH is now using a high-speed sorting system for parts.
As a result, all single page parts are collated before multiple page parts.

T H E
F · J · H
M U S I C
C O M P A N Y
I N C.
Frank J. Hackinson

2525 Davie Road, Suite 360
Fort Lauderdale, Florida 33317-7424



The Composer

Brian Balmages is an active composer, conductor, and performer. He received his bachelor's degree in music from James Madison University and his master's degree from the University of Miami in Florida. Mr. Balmages's compositions have been performed worldwide at conferences including the CBDNA National Conference, the Midwest Clinic, the International Tuba/Euphonium Conference, the International Trombone Festival, and the International Trumpet Guild Conference. His active schedule of commissions and premieres has incorporated groups ranging from elementary schools to professional ensembles, including the Baltimore Symphony Orchestra, the Miami Symphony Orchestra, and the University of Miami Wind Ensemble. Currently, he is director of instrumental publications at The FJH Music Company Inc. in Fort Lauderdale, Florida, and an adjunct faculty member at Towson University in Baltimore, Maryland.

Mr. Balmages studied trumpet with James Kluesner, Don Tison, and Gilbert Johnson. He is a freelance musician in the Baltimore area, and has performed with the Miami Symphony Orchestra, the Florida Chamber Orchestra, Skyline Brass, and the Henry Mancini Institute Orchestra.

About the Music

Renaissance-style music is well suited for beginning band because it can be played effectively with the limited rhythms and range available at this grade level. This work is not based on preexisting material, but it does embody the characteristics of Renaissance music. All instruments use only six notes, while clarinets use an additional written low B to involve the right hand. Trumpet 2 and clarinet parts are entirely optional, but are effective for less experienced players.

In the opening and all related sections, work to give quarter notes their full value, in contrast with the shorter eighth notes. Whole notes in the wind parts should also be sustained and given their full value. In measure 27, try to achieve a nice contrast between the staccato bass line and legato upper voices before all voices become legato in measure 31. Make certain that the last note of the piece is not clipped—it should resonate after the ensemble finishes.

Brian Balmages

COURTLY DANCE AND PROCESSION

BRIAN BALMAGES
(ASCAP)

Stately (♩ = 100-108)

The score is arranged in a standard orchestral format with multiple staves for each instrument family. The key signature has two flats (Bb and Eb) and the time signature is 4/4. The tempo is marked 'Stately' with a quarter note equal to 100-108 beats per minute. The score is divided into two systems. The first system includes Flute, Oboe, Bassoon, Bb Clarinets (1 and Opt. 2), Bb Bass Clarinet, Eb Alto Saxophone, Bb Tenor Saxophone, and Eb Baritone Saxophone. The second system includes Bb Trumpets (1 and Opt. 2), F Horn, Trombone, Baritone/Euphonium, Tuba, Bells, Snare Drum (S.D.) and Bass Drum (B.D.), Tambourine and Wood Block, and Crash Cymbals and Triangle. A large red watermark 'Preview Only' is overlaid diagonally across the score.

Copyright © 2004 The FJH Music Company Inc.

International Copyright Secured. Made in U.S.A. All Rights Reserved.

WARNING! This arrangement is protected by copyright law. Copying or reproducing it by any method without the publisher's written permission is an infringement of copyright law. Anyone who reproduces copyrighted materials is subject to substantial penalties for each infringement.

Fl.
Ob.
Bsn.
1
Cls.
Opt. 2
B. Cl.
A. Sax.
T. Sax.
B. Sax.
1
Tpts.
Opt. 2
Hn.
Tbn.
Bar./
Euph.
Tuba
Bells
S.D.
B.D.
Tamb.
W.B.
Cr. Cym.
Tri.

11 12 13 14 15

Preview Only - Legal Use Requires Purchase

17

Fl.

Ob.

Bsn.

1

Cls.

Opt. 2

B. Cl.

A. Sax.

T. Sax.

B. Sax.

17

1

Tpts.

Opt. 2

Hn.

Tbn.

Bar./Euph.

Tuba

Bells

S.D.
B.D.

Tamb.
W.B.

Cr. Cym.
Tri.

16 17 *f* 18 19 20

Fl.

Ob.

Bsn.

1
Cls.

Opt. 2

B. Cl.

A. Sax.

T. Sax.

B. Sax.

1
Tpts.

Opt. 2

Hn.

Tbn.

Bar./
Euph.

Tuba

Bells

S.D.
B.D.

Tamb.
W.B.

Cr. Cym.
Tri.

21

22

23 *f*

24

25

35

Fl. *mp legato*

Ob. *mp legato*

Bsn. *legato*

1 Cls.

Opt. 2

B. Cl. *legato*

A. Sax.

T. Sax. *mp*

B. Sax. *legato*

35

1 Tpts. *mp legato*

Opt. 2 *mp legato*

Hn. *mp*

Tbn.

Bar./Euph.

Tuba

Bells *mp*

S.D. B.D.

Tamb. W.B.

Cr. Cym. Tri.

31 *mp* 32 33 34 35 *mp*



Fl.
Ob.
Bsn.
1
Cls.
Opt. 2
B. Cl.
A. Sax.
T. Sax.
B. Sax.
1
Tpts.
Opt. 2
Hn.
Tbn.
Bar./
Euph.
Tuba
Bells
S.D.
B.D.
Tamb.
W.B.
Cr. Cym.
Tri.

mp
mp
mp
mp
mp
mp
mp
mp
mp
mp

36 37 38 39 40

Preview Only
Legal Use Requires Purchase

43

Fl.

Ob.

Bsn.

1
Cls.

Opt. 2

B. Cl.

A. Sax.

T. Sax.

B. Sax.

1
Tpts.

Opt. 2

Hn.

Tbn.

Bar./
Euph.

Tuba

Bells

S.D.
B.D.

Tamb.
W.B.

Cr. Cym.
Tri.

mp

mp

41 42 43 44 45

43

f

Fl.

Ob.

Bsn.

1
Cls.

Opt. 2

B. Cl.

A. Sax.

T. Sax.

B. Sax.

1
Tpts.

Opt. 2

Hn.

Tbn.

Bar./
Euph.

Tuba

Bells

S.D.
B.D.

Tamb.
W.B.

Cr. Cym.
Tri.

46 47 48 49 50

51

Fl. *f*

Ob. *f*

Bsn. *f*

1 Cls. *f*

Opt. 2 *f*

B. Cl. *f*

A. Sax. *f*

T. Sax.

B. Sax. *f*

51

1 Tpts. *f*

Opt. 2 *f*

Hn.

Tbn. *f*

Bar./Euph. *f*

Tuba *f*

Bells *f*

S.D. B.D. *f*

Tamb. W.B. *f*

Cr. Cym. Tri. *f*

51 *f* 52 53 54 55

This page contains a musical score for a variety of instruments. The instruments listed on the left are: Fl., Ob., Bsn., Cls., Opt. 2, B. Cl., A. Sax., T. Sax., B. Sax., Tpts., Opt. 2, Hn., Tbn., Bar./Euph., Tuba, Bells, S.D. B.D., Tamb. W.B., and Cr. Cym. Tri. The score is written in a key signature of two flats (B-flat and E-flat) and a common time signature. A large red watermark reading "Preview Only" is overlaid diagonally across the page. A second page number "59" is visible in a box on the right side of the score. The bottom of the page is marked with measure numbers 56, 57, 58, 59, and 60.

Fl.

Ob.

Bsn.

1
Cls.

Opt. 2

B. Cl.

A. Sax.

T. Sax.

B. Sax.

1
Tpts.

Opt. 2

Hn.

Tbn.

Bar./
Euph.

Tuba

Bells

S.D.
B.D.

Tamb.
W.B.

Cr. Cym.
Tri.

61 *f*

62

63

64