

# FLIGHT OF THE GRIFFIN

Brian Balmages

## Instrumentation

1 - Conductor's Full Score	2 - Trombone 1
1 - Piccolo	2 - Trombone 2
4 - Flute 1	2 - Trombone 3
4 - Flute 2	2 - Baritone/ Euphonium
2 - Oboe	2 - Baritone T.C.
2 - Bassoon	4 - Tuba
4 - B $\flat$ Clarinet 1	3 - Mallet Percussion
4 - B $\flat$ Clarinet 2	Xylophone
4 - B $\flat$ Clarinet 3	Bells
2 - B $\flat$ Bass Clarinet	Marimba
2 - E $\flat$ Alto Saxophone 1	1 - Timpani
2 - E $\flat$ Alto Saxophone 2	2 - Percussion 1
2 - B $\flat$ Tenor Saxophone	Wind Chimes
2 - E $\flat$ Baritone Saxophone	Medium Tom-tom
3 - B $\flat$ Trumpet 1	Bass Drum
3 - B $\flat$ Trumpet 2	3 - Percussion 2
3 - B $\flat$ Trumpet 3	Tambourine
1 - F Horn 1	Triangle
1 - F Horn 2	Finger Cymbals
1 - F Horn 3	4 - Percussion 3
1 - F Horn 4	Suspended Cymbal
	Crash Cymbals
	Sleigh Bells
	Tam-tam

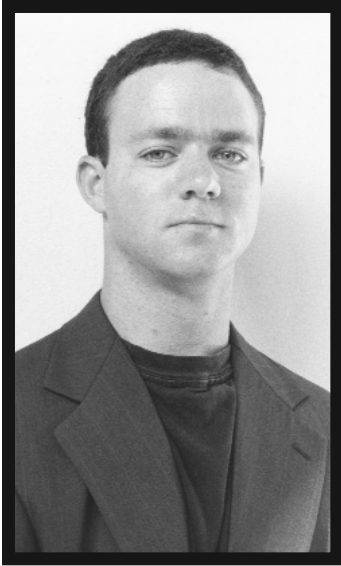
FJH is now using a high-speed sorting system for parts.  
As a result, all single page parts are collated before multiple page parts.

T H E  
F · J · H  
M U S I C  
C O M P A N Y  
I N C.  

---

Frank J. Hackinson

2525 Davie Road, Suite 360  
Fort Lauderdale, Florida 33317-7424  
www.fjhmusic.com



## The Composer

Brian Balmages is an active performer, arranger, and composer. He received his bachelor's degree in music from James Madison University and his master's degree from the University of Miami in Florida. Mr. Balmages's works have been performed internationally at conferences, such as The Midwest Clinic, the International Tuba/Euphonium Conference, the International Trombone Festival, and the International Trumpet Guild Conference. His list of commissions includes many schools and universities, as well as the Baltimore Symphony Orchestra, the Riverside Wind Symphony, and Junction. Sought after as a clinician, composer, and conductor, he is composer-in-residence for the Mid-Atlantic Wind Conductors Conference and the Skyline Brass Music Festival.

Mr. Balmages studied trumpet with James Kluesner, Don Tison, and Gilbert Johnson. In addition to being a freelance musician, he currently performs with the Miami Symphony Orchestra, the Florida Chamber Orchestra, and the Skyline Brass.

---

## About the Music

*Flight of the Griffin* was commissioned by the Lincoln-Way East High School Music Boosters for the Lincoln-Way East Wind Symphony.

The concept of this piece came from the griffin, which is the mascot of the school that commissioned this work. According to mythology, the griffin is a creature typically having the head, forepart, and wings of an eagle, and the body, hind legs, and tail of a lion. It originated in ancient Middle Eastern legend, influencing many of the Indian sounds incorporated throughout the piece.

The opening depicts the origin and magnificence of this powerful creature. The middle of the work explores what a traveler would see when approaching the griffin's nest. It is said that the griffin would fly up to the mountains then return to build its nest out of the gold that was found. The utter beauty and awe of such a site provides the emotional basis from which this section is inspired. The final section takes the listener on an actual flight. One can fathom the tremendous wingspan and power as this magical creature takes flight.

*Brian Balmages*

# FLIGHT OF THE GRIFFIN

BRIAN BALMAGES  
(ASCAP)

**Allegro** (♩ = 152-160)

(2+3 always)

(♩ = ♩ throughout)

The score is divided into two systems. The first system includes Piccolo, Flutes (1, 2), Oboe, Bassoon, B♭ Clarinets (1, 2, 3), B♭ Bass Clarinet, E♭ Alto Saxophones (1, 2), B♭ Tenor Saxophone, and E♭ Baritone Saxophone. The second system includes B♭ Trumpets (1, 2, 3), F Horns (1, 2, 3, 4), Trombones (1, 2, 3), Baritone/Euphonium, Tuba, Mallet Percussion (Xylophone, Bells, Marimba), Timpani (G, A, E), Percussion 1 (Wind Chimes, Medium Tom-tom, Bass Drum), Percussion 2 (Tambourine, Triangle, Finger Cymbals), and Percussion 3 (Suspended Cymbal, Crash Cymbals, Sleigh Bells, Tam-tam). The score includes dynamic markings such as *p* and *Tamb.* and performance instructions like *(2+3 always)* and *(♩ = ♩ throughout)*. A large red watermark reading "Preview Only" is overlaid diagonally across the score.

Copyright © 2003 The FJH Music Company Inc.

International Copyright Secured. Made in U.S.A. All Rights Reserved.

WARNING! This arrangement is protected by copyright law. Copying or reproducing it by any method without the publisher's written permission is an infringement of copyright law. Anyone who reproduces copyrighted materials is subject to substantial penalties for each infringement.

9

Picc.

Fls. 1  
2

Ob.

Bsn.

1  
2  
3  
B. Cl.

A. Saxes 1  
2

T. Sax.

B. Sax.

9

1  
2  
3  
Tpts.

1  
2  
3  
4  
Hns.

1  
2  
3  
Tbns.

Bar./  
Euph.

Tuba

Mlt. Perc.

Timp.

Perc. 1

Perc. 2

Perc. 3

W. Ch.

Tri. *p*

sim.

*p*

9 10 11 12 13 14 15 16

17

Picc.

Fls. 1  
2

Ob.

Bsn.

1  
2  
3

B. Cl.

A. Saxes 1  
2

T. Sax.

B. Sax.

17

1  
2  
3

Tpts.

1  
2  
3  
4

Hns.

1  
2  
3

Tbns.

Bar./  
Euph.

Tuba

Mlt. Perc.

Timp.

Perc. 1

Perc. 2

Perc. 3

17 18 19 20 21 22 23 24



25

Picc. *mp* *mf*

Fls. 1 *mf* a2

2

Ob. *mp* *mf*

Bsn. *mf*

1 *mf*

Clas. 2 *mf*

3 *mf*

B. Cl. *mf*

A. Saxes 1 a2 *mp* *mf*

2

T. Sax. *mf*

B. Sax. *mf*

25

1 *mf*

Tpts. 2 *mp* *mf*

3

1 *mf*

Hns. 2 *mf*

3 *mf*

4

1 *mf*

Tbns. 2 *mf*

3 *mf*

Bar./Euph. *mf*

Tuba *mf*

Mlt. Perc. Xylo. *mf*

Timp.

Perc. 1 I.T. *mp* *mf* B.D.

Perc. 2 *mf*

Perc. 3 *mf* Sus. Cym.

25 26 27 28 29 30 31 32 *mp*

37

Picc.  
Fls. 1  
2  
Ob.  
Bsn.

Cls. 1  
2  
3  
B. Cl.

A. Saxes 1  
2  
T. Sax.  
B. Sax.

Tpts. 1  
2  
3

Hns. 1  
2  
3  
4

Tbns. 1  
2  
3

Bar./Euph.  
Tuba

Mlt. Perc.  
Timp.

Perc. 1  
Perc. 2  
Perc. 3

33 *f* 34 35 36 37 38 39 40 41

37

Cr. Cym.

*f*

hard mallets

*mp*

*mp*

sim.

Picc. *mf*

Fls. 1 *mf* a2

Fls. 2 *mf*

Ob. *mf*

Bsn. *mf*

Cls. 1 *mf*

Cls. 2 *mf*

Cls. 3 *mf*

B. Cl. *mf*

A. Saxes 1 *mf* a2

A. Saxes 2 *mf*

T. Sax. *mf*

B. Sax. *mf*

Tpts. 1 *mf* st. mute

Tpts. 2 *mf* st. mute

Tpts. 3 *mf* open

Hns. 1 *mf* a2

Hns. 2 *mf* a2

Hns. 3 *mf*

Hns. 4 *mf*

Tbns. 1 *mf*

Tbns. 2 *mf*

Tbns. 3 *mf*

Bar./ Euph. *mf*

Tuba *mf*

Mlt. Perc. *mp* *mf* Bells w/brass mallets

Timp. *mf*

Perc. 1 *mf*

Perc. 2 *mf*

Perc. 3 *mf* Sl. Bells Cr. Cym.



Picc.

Fls. 1  
2

Ob.

Bsn.

Cl. 1  
2  
3

B. Cl.

A. Sax. 1  
2

T. Sax.

B. Sax.

Tpts. 1  
2  
3

Hns. 1  
2  
3  
4

Tbns. 1  
2  
3

Bar./Euph.

Tuba

Mlt. Perc.

Timp.

Perc. 1

Perc. 2

Perc. 3

50 *p* 51 *mf* 52 53 54 55 *mf* 56

Picc.

Fls. 1  
2

Ob.

Bsn.

1  
2  
3  
B. Cl.

A. Saxes 1  
2

T. Sax.

B. Sax.

1  
2  
3  
Tpts.

1  
2  
3  
4  
Hns.

1  
2  
3  
Tbns.

Bar.  
Euph.

Tuba

Mlt. Perc.

Timp.

Perc. 1

Perc. 2

Perc. 3

Mar. w/hard mallets

Cr. Cym.

57 58 59 60 61 62 63



Picc.

Fls. 1  
2

Ob.

Bsn.

1  
2  
3  
Cls.

B. Cl.

1  
2  
A. Saxes

T. Sax.

B. Sax.

1  
2  
3  
Tpts.

1  
2  
3  
4  
Hns.

1  
2  
3  
Tbns.

Bar.  
Euph.

Tuba

Mlt. Perc.

Timp.

Perc. 1

Perc. 2

Perc. 3

Sus. Cym.

64 65 66 *mp* 67 *f* 68 69 70

Picc.

Fls. 1  
2

Ob.

Bsn.

1  
2  
3

B. Cl.

A. Saxes 1  
2

T. Sax.

B. Sax.

1  
2  
3

Tpts.

1  
2  
3  
4

Hns.

1  
2  
3

Tbns.

Bar./  
Euph.

Tuba

Mlt. Perc.

Timp.

Perc. 1

Perc. 2

Perc. 3

75

75

Bells

Cr. Cym.

71 72 73 74 75 76 77

Picc.

Fls. 1  
2

Ob.

Bsn.

1  
2  
3

B. Cl.

A. Saxes 1  
2

T. Sax.

B. Sax.

1  
2  
3

Tpts.

1  
2  
3

Hns. 1  
2  
3  
4

Tbns. 1  
2  
3

Bar./  
Euph.

Tuba

Mit. Perc.

Timp.

Perc. 1

Perc. 2

Perc. 3

83

83

83

84

*f*

*f*

*f*

*f*

Xylo.

F. Cym.

Tri.

sim.

Tamb.

Sl. Bells

78 79 80 81 82 83 84



Picc.  
 Fls. 1  
 2  
 Ob.  
 Bsn.  
 Cls. 1  
 2  
 3  
 B. Cl.  
 A. Saxes 1  
 2  
 T. Sax.  
 B. Sax.  
 Tpts. 1  
 2  
 3  
 Hns. 1  
 2  
 3  
 4  
 Tbns. 1  
 2  
 3  
 Bar. Euph.  
 Tuba  
 Mlt. Perc.  
 Timp.  
 Perc. 1  
 Perc. 2  
 Perc. 3

Musical score for various instruments (Picc., Fls., Ob., Bsn., Cls., B. Cl., A. Saxes, T. Sax., B. Sax., Tpts., Hns., Tbns., Bar. Euph., Tuba, Mlt. Perc., Timp., Perc. 1, Perc. 2, Perc. 3) across measures 85 to 91. Dynamic markings include *dim.* and *mf*.

rit.

The image shows a page of a musical score, page 15, with measures 92 through 98. The score is for a large ensemble, including woodwinds, brass, and percussion. The key signature is one sharp (F#) and the time signature is 3/4. The tempo marking 'rit.' (ritardando) is present at the top and in the middle of the page. A large, diagonal red watermark reading 'Preview Only' is overlaid across the entire page. The instruments and their parts are as follows:

- Picc.**: Piccolo flute, rests throughout.
- Fls. 1 & 2**: Flutes, rests throughout.
- Ob.**: Oboe, rests throughout.
- Bsn.**: Bassoon, rests throughout.
- Cls. 1, 2, & 3**: Clarinets, rests throughout.
- B. Cl.**: Bass Clarinet, rests throughout.
- A. Saxes 1 & 2**: Alto Saxophones, rests throughout.
- T. Sax.**: Tenor Saxophone, rests throughout.
- B. Sax.**: Baritone Saxophone, rests throughout.
- Tpts. 1, 2, & 3**: Trumpets, rests throughout.
- Hns. 1, 2, 3, & 4**: Horns, rests throughout.
- Tbn. 1 & 2**: Tenor Trombones, play a melodic line starting in measure 92, marked *p* (piano) in measure 98.
- Tbn. 3**: Bass Trombone, plays a rhythmic accompaniment of eighth notes, marked *p* in measure 98.
- Bar./Euph.**: Baritone/Euphonium, plays a melodic line, marked *p* in measure 98.
- Tuba**: Tuba, plays a rhythmic accompaniment of eighth notes, marked *p* in measure 98.
- Mt. Perc.**: Mallet Percussion, rests throughout.
- Timp.**: Timpani, plays a rhythmic accompaniment of eighth notes, marked *p* in measure 98.
- Perc. 1**: Percussion 1, rests throughout.
- Perc. 2**: Percussion 2, plays a rhythmic accompaniment of eighth notes, marked *p* in measure 98.
- Perc. 3**: Percussion 3, rests throughout.

99 Andante lirico (♩ = 78)

Picc.

Fls. 1  
2  
*p*

Ob.

Bsn.  
*p*

1  
2  
3

B. Cl.  
*p*

A. Saxes 1  
2

T. Sax.

B. Sax.

*p*

99 Andante lirico (♩ = 78)

1  
2  
3

Tpts.

1  
2  
3  
4

Hns.  
*p*

1  
2  
3

Tbns.

Bar.  
Euph.

Tuba

Mlt. Perc.  
*p*

Bells  
rubber mallets

Timp.  
(E to C)

Perc. 1

Perc. 2  
F. Cym.  
*p*

Perc. 3



Picc.

Fls. 1  
2

Ob. Solo  
*p*

Bsn. *tutti*

1  
2  
3  
B. Cl. *p*  
*play*

1. Oboe Solo  
A. Saxes 1  
2 *p*

T. Sax. *p*

B. Sax. *p*

1  
2  
3  
Tpts. *p*  
*a2*

1  
2  
3  
4  
Hns. *tutti*  
*p*

1  
2  
3  
Tbns. *p*

Bar./  
Euph. *p*

Tuba *p*

Mlt. Perc.

Timp.

Perc. 1 W. Ch.  
*p*

Perc. 2

Perc. 3

106

107

108

109

110

111

112

115

Picc.

Fls. 1  
2

Ob.

Bsn.

1 player

Cls. 1  
2  
3

B. Cl.

A. Saxes 1  
2

T. Sax.

B. Sax.

115

Tpts. 1  
2  
3

Hns. 1  
2  
3  
4

Tbns. 1  
2  
3

Bar./Euph.

Tuba

Mar.  
soft yarn mallets

Mlt. Perc.

Timp.

Perc. 1

Perc. 2

Perc. 3

*p*

*p*

*p*

*p*

113

114

115

116

117

118

123

Picc.

Fls. 1  
2. Solo *p*

Ob.

Bsn.

1  
Cls. 2  
3

B. Cl.

1  
A. Saxes 2

T. Sax.

B. Sax.

1  
Tpts. 2  
3

1  
Hns. 2  
3  
4

1  
Tbns. 2  
3

Bar./  
Euph.

Tuba

Mlt. Perc.

Timp.

Perc. 1

Perc. 2

Perc. 3

123

*mp*

*mp*

*mp*

*mp*

*mp*

*mp*

*mp*

119

120

121

122

123

124

con moto

Picc.

Fls. 1  
2

Ob.

Bsn.

Cls. 1  
2  
3

B. Cl.

A. Saxes 1  
2

T. Sax.

B. Sax.

Tpts. 1  
2  
3

Hns. 1  
2  
3  
4

Tbns. 1  
2  
3

Bar./Euph.

Tuba

Mlt. Perc.

Timp.

Perc. 1

Perc. 2

Perc. 3

Sus. Cym.

*mp*  
tutti  
*mp*  
*mp*  
*mp*  
*mp*

*mf*  
*mp*  
*mf*  
*mf*  
*mf*  
*mf*  
*mf*  
*mf*  
*mp*

con moto

125 126 *p* 127 *mf* 128 129 130 131

This musical score page covers measures 132 through 138. The instrumentation includes Piccolo, Flutes (1 and 2), Oboe, Bassoon, Clarinets (1, 2, and 3), Bass Clarinet, Alto Saxophones (1 and 2), Tenor Saxophone, Bass Saxophone, Trumpets (1, 2, and 3), Horns (1, 2, 3, and 4), Trombones (1, 2, and 3), Baritone/Euphonium, Tuba, Mallet Percussion, Timpani, and three different Percussion parts. The score features various dynamics such as *mf*, *molto cresc.*, *f*, and *mp*. Performance markings include *1. tutti*, *2. tutti*, and *rit.* (ritardando). A large red watermark reading "Preview Only! Legal Use Requires Purchase" is overlaid diagonally across the page.

132 133 134 135 136 137 138

139 A tempo

Picc. *ff*

Fls. 1 *ff*

Fls. 2 *ff*

Ob. *ff*

Bsn. *ff*

1 *ff*

Clas. 2 *ff*

3 *ff*

B. Cl. *ff*

A. Saxes 1 *ff*

2 *ff*

T. Sax. *ff*

B. Sax. *ff*

139 A tempo

1 *ff*

Tpts. 2 *ff*

3 *ff*

1 *ff*

Hns. 2 *ff*

3 *ff*

4 *ff*

1 *ff*

Tbns. 2 *ff*

3 *ff*

Bar./Euph. *ff*

Tuba *ff*

Mit. Perc. *ff*

Bells w/brass mallets *ff*

Timp. *ff*

Perc. 1 *ff*

Perc. 2 *ff*

Perc. 3 *ff*

Tam-tam 139 *ff*

140 141 142 *mp* 143 *ff* 144 145

(C to D)

rit.

A tempo

Musical score for various instruments including Picc., Fls., Ob., Bsn., Cls., B. Cl., A. Saxes, T. Sax., B. Sax., Tpts., Hns., Tbns., Bar./Euph., Tuba, Mlt. Perc., Timp., Perc. 1, Perc. 2, and Perc. 3. The score spans measures 146 to 151 and includes dynamic markings like *mf* and *mp*. A large red watermark 'Preview Only - Legal Use Requires Purchase' is overlaid on the score.

146

147

148

149

150

151

rit.

The image shows a page of a musical score for a large ensemble. The instruments listed on the left are Picc., Fls. 1 & 2, Ob., Bsn., Cls. 1, 2, & 3, B. Cl., A. Saxes 1 & 2, T. Sax., B. Sax., Tpts. 1, 2, & 3, Hns. 1, 2, 3, & 4, Tbn. 1, 2, & 3, Bar./Euph., Tuba, Mlt. Perc., Timp., Perc. 1, Perc. 2, and Perc. 3. The score is written in 3/4 time and includes various musical notations such as notes, rests, and dynamics. A prominent red watermark reading 'Preview Only' is overlaid diagonally across the page. The word 'rit.' appears above the Picc. staff and above the Tpts. 1 staff. The Bsn. staff has a 'p' dynamic marking. The Cls. 1, 2, and 3 staves also have 'p' markings. The Bsn. staff has a 'p' marking. The Tuba staff has a 'p' marking. The Perc. 2 staff has a 'p' marking. The page number '24' is in the top left corner. The page number 'B1192' is in the bottom left corner. The page number '152' through '158' are at the bottom of the page.



159 Allegro (♩ = 152-160)

Picc.

Fls. 1  
2

Ob.

Bsn.

1

Cls. 2  
3

B. Cl.

A. Saxes 1  
2

T. Sax.

B. Sax.

159 Allegro (♩ = 152-160)

1  
2  
3

Tpts.

1  
2  
3  
4

Hns.

1  
2  
3

Tbns.

Bar./  
Euph.

Tuba

Mit. Perc.

Timp.

Perc. 1

Perc. 2

Perc. 3

159 160 161 162 163 164 165 166

Picc.

Fls. 1  
2

Ob.

Bsn.

1  
2  
3

Cl. 1  
2  
3

B. Cl.

A. Saxes 1  
2

T. Sax.

B. Sax.

Tpts. 1  
2  
3

Hns. 1  
2  
3  
4

Tbn. 1  
2  
3

Bar./Euph.

Tuba

Mlt. Perc.

Timp.

Perc. 1

Perc. 2

Perc. 3

Sl. Bells

167 *mp cresc.* 168 169 170 171 172 173

175

Picc.

Fls. 1 2

Ob.

Bsn.

Cls. 1 2 3

B. Cl.

A. Saxes 1 2

T. Sax.

B. Sax.

175

Tpts. 1 2 3

Hns. 1 2 3 4

Tbns. 1 2 3

Bar. Euph.

Tuba

Bells w/brass mallets

Mlt. Perc.

Timp.

Perc. 1

Perc. 2

Perc. 3

174 mp 175 f 176 177 178 179 180



Picc.

Fls. 1  
2

Ob.

Bsn.

Cls. 1  
2  
3

B. Cl.

A. Saxes 1  
2

T. Sax.

B. Sax.

Tpts. 1  
2  
3

Hns. 1  
2  
3  
4

Tbns. 1  
2  
3

Bar./Euph.

Tuba

Mlt. Perc.

Timp.

Perc. 1

Perc. 2

Perc. 3

181 182 183 184 185 186 187

Picc.  
Fls. 1  
2  
Ob.  
Bsn.  
Cls. 1  
2  
3  
B. Cl.  
A. Saxes 1  
2  
T. Sax.  
B. Sax.  
Tpts. 1  
2  
3  
Hns. 1  
2  
3  
4  
Tbns. 1  
2  
3  
Bar./Euph.  
Tuba  
Mlt. Perc.  
Timp.  
Perc. 1  
Perc. 2  
Perc. 3

195

Picc.

Fls. 1  
2

Ob.

Bsn.

1  
2  
3

B. Cl.

A. Saxes  
1  
2

T. Sax.

B. Sax.

195

Tpts.  
1  
2  
3

Hns.  
1  
2  
3  
4

Tbns.  
1  
2  
3

Bar./  
Euph.

Tuba

Mlt. Perc.

Timp.

Perc. 1

Perc. 2

Perc. 3

195 196 197 198 199 200 201

Picc.

Fls. 1  
2

Ob.

Bsn.

1  
2  
3  
Cls.

B. Cl.

1  
2  
A. Saxes

T. Sax.

B. Sax.

1  
2  
3  
Tpts.

1  
2  
3  
4  
Hns.

1  
2  
3  
Tbns.

Bar./Euph.

Tuba

Mit. Perc.

Timp.

Perc. 1

Perc. 2

Perc. 3

202 203 204 *mp* 205 *f* 206 207 208 *mp*

211

Picc. *dim.*

Fls. 1 *dim.*

Fls. 2 *dim.*

Ob. *dim.*

Bsn. *dim.*

1 *dim.*

Cls. 2

Cls. 3

B. Cl. *dim.*

A. Saxes 1 *a2*

A. Saxes 2

T. Sax.

B. Sax.

211

1 *dim.*

Tpts. 2 *dim.*

Tpts. 3

1 *dim.*

Hns. 2

Hns. 3

Hns. 4

1 *dim.*

Tbns. 2 *dim.*

Tbns. 3

Bar. Euph. *dim.*

Tuba *dim.*

Mit. Perc.

Timp.

Perc. 1 *f*

Perc. 2

Perc. 3

209 *f* 210 211 212 213 214



219

Picc.  
Fls. 1 2  
Ob.  
Bsn.  
1  
Cls. 2 3  
B. Cl.  
A. Saxes 1 2  
T. Sax.  
B. Sax.  
1  
Tpts. 2 3  
1 2  
Hns. 3 4  
1 2  
Tbns. 3  
Bar./Euph.  
Tuba  
Mlt. Perc.  
Timp.  
Perc. 1  
Perc. 2  
Perc. 3

215 216 217 218 219 220 221 222

227

Picc.

Fls. 1  
2

Ob.

Bsn.

1  
2  
3

Cls. 2  
3

B. Cl.

A. Saxes 1  
2

T. Sax.

B. Sax.

1  
2  
3

Tpts.

1  
2  
3

Hns. 1  
2  
3  
4

1  
2  
3

Tbns.

Bar./Euph.

Tuba

Mit. Perc.

Timp.

Perc. 1

Perc. 2

Perc. 3

*mp*

*a2*

*mp*

*mp*

*mp*

*mp*

*mp*

*sim.*

*mp*

223 224 225 226 227 228 229 230

235

Picc.  
 Fls. 1  
 2  
 Ob.  
 Bsn.  
 1  
 Cls. 2  
 3  
 B. Cl.  
 A. Saxes 1  
 2  
 T. Sax.  
 B. Sax.  
 1  
 Tpts. 2  
 3  
 1  
 Hns. 2  
 3  
 4  
 1  
 2  
 Tbn. 3  
 Bar./  
 Euph.  
 Tuba  
 Mlt. Perc.  
 Timp.  
 Perc. 1  
 Perc. 2  
 Perc. 3

*mf*  
*mf*  
*mf*  
*mf*  
 F. Cym.  
 sim.  
*mf*

231 232 233 234 235 236 237

2. *mf*

*f*

243

*f*

243

*f*

238 239 240 241 242 243 244 245

251

Picc. *ff*

Fls. 1 *ff*

Fls. 2 *ff*

Ob. *ff*

Bsn. *ff*

1 *ff*

2 *ff*

3 *ff*

B. Cl. *ff*

A. Saxes 1 *ff*

A. Saxes 2 *ff*

T. Sax. *ff*

B. Sax. *ff*

251

1 *f*

2 *ff*

3 *ff*

Tpts. *ff*

1 *ff*

2 *ff*

3 *ff*

4 *ff*

Hns. *ff*

1 *ff*

2 *ff*

3 *ff*

Bar./Euph. *ff*

Tuba *ff*

Mlt. Perc. *f*

Timp. *ff*

Perc. 1 *ff*

Perc. 2 *ff*

Perc. 3 *ff*

246 247 248 249 250 *mp* 251 *ff* 252



Picc.

Fls. 1  
2

Ob.

Bsn.

1  
2  
3  
B. Cl.

1  
2  
A. Saxes  
T. Sax.  
B. Sax.

1  
2  
3  
Tpts.

1  
2  
3  
4  
Hns.

1  
2  
3  
Tbn.

Bar./  
Euph.

Tuba

Mlt. Perc.

Timp.

Perc. 1

Perc. 2

Perc. 3

253 254 255 256 257 258 259 260

Picc.  
 Fls. 1  
 2  
 Ob.  
 Bsn.  
 1  
 Cls. 2  
 3  
 B. Cl.  
 A. Saxes 1  
 2  
 T. Sax.  
 B. Sax.  
 1  
 Tpts. 2  
 3  
 1  
 Hns. 2  
 3  
 4  
 1  
 Tbns. 2  
 3  
 Bar./  
 Euph.  
 Tuba  
 Mlt. Perc.  
 Timp.  
 Perc. 1  
 Perc. 2  
 Perc. 3

261 262 263 Tam. 264 265 266 mf 267 ff dampen