

BLUE RIDGE IMPRESSIONS

Brian Balmages

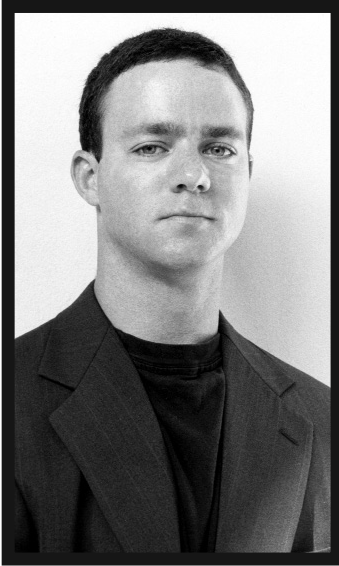
Instrumentation

1 - Conductor's Full Score	3 - Trombone 1
8 - Flute	3 - Trombone 2
2 - Oboe	2 - Baritone/ Euphonium
1 - Bassoon	2 - Baritone T.C.
4 - B \flat Clarinet 1	4 - Tuba
4 - B \flat Clarinet 2	1 - Bells
2 - B \flat Bass Clarinet	1 - Timpani
2 - E \flat Alto Saxophone 1	4 - Percussion 1 Snare Drum Bass Drum Triangle
2 - E \flat Alto Saxophone 2	2 - Percussion 2 Suspended Cymbal Crash Cymbals
2 - B \flat Tenor Saxophone	
1 - E \flat Baritone Saxophone	
4 - B \flat Trumpet 1	
4 - B \flat Trumpet 2	
4 - F Horn	

FJH is now using a high-speed sorting system for parts.
As a result, all single page parts are collated before multiple page parts.

T H E
F · J · H
M U S I C
C O M P A N Y
I N C.
Frank J. Hackinson

2525 Davie Road, Suite 360
Fort Lauderdale, Florida 33317-7424



The Composer

Brian Balmages is an active performer, arranger, and composer. He received his bachelor's degree in music from James Madison University and a master's degree from the University of Miami (FL). Mr. Balmages' works have been performed internationally at conferences such as the Midwest Band and Orchestra Clinic, the Southeastern Tuba-Euphonium Conference, the International Trombone Festival, and the International Trumpet Guild Conference. In addition, his band and orchestral music has been widely performed by bands and orchestras across the country. He is sought after as a clinician and composer and is currently composer-in-residence for the Mid-Atlantic Wind Conductors Conference and Skyline Brass Music Festival.

An accomplished trumpet player, Mr. Balmages performs with the Miami Symphony Orchestra, Florida Chamber Orchestra, and the Skyline Brass. He has performed at Walt Disney World and the Henry Mancini Institute in Los Angeles, and is currently an active performer in the Miami area.

Performance Notes

Blue Ridge Impressions is named after the magnificent mountain range that passes through Virginia's Albemarle County. The piece follows the path of a single drop of water as it begins at the top of a mountain and embarks on its long journey downward. After a powerful introduction, a simple melody is introduced and developed. The piece becomes more joyous as it mimics the drop of water dancing its way down the mountain. We eventually find ourselves in a calm stream, leisurely floating along. This slow section attempts to capture the mood of such a trip with its occasional bumps and dips. Energy begins to build as the water becomes rougher with the approach of a final waterfall that sends us cascading to the bottom of the mountain.

Brian Balmages

BLUE RIDGE IMPRESSIONS

BRIAN BALMAGES
(ASCAP)

Allegro (♩ = 126)

The score is for a 4/4 piece in B-flat major, marked Allegro with a tempo of 126 beats per minute. The instrumentation includes Flute, Oboe, Bassoon, B♭ Clarinets (1 and 2), B♭ Bass Clarinet, E♭ Alto Saxophone (1 and 2), B♭ Tenor Saxophone, E♭ Baritone Saxophone, B♭ Trumpets (1 and 2), F Horn, Trombones (1 and 2), Baritone/Euphonium, Tuba, Bells, Timpani, Percussion 1 (Snare Drum, Bass Drum, Triangle), and Percussion 2 (Suspended Cymbal, Crash Cymbals). The score is divided into four measures, with dynamics ranging from *f* (forte) to *p* (piano). A large red watermark reading 'Preview Only' is overlaid diagonally across the score.

Copyright © 2001 The FJH Music Company Inc.

International Copyright Secured. Made in U.S.A. All Rights Reserved.

WARNING! This arrangement is protected by copyright law. Copying or reproducing it by any method without the publisher's written permission is an infringement of copyright law. Anyone who reproduces copyrighted materials is subject to substantial penalties for each infringement.

Fl.

Ob.

Bsn.

1
Cls.

2

B. Cl.

1
A. Sax.

2

T. Sax.

B. Sax.

1
Tpts.

2

Hn.

1
Tbns.

2

Bar./
Euph.

Tuba

Bells

Timp.

Perc. 1

Perc. 2

5 *f*

6

7

8 *f*

9

Fl.

Ob.

Bsn.

1
Cls.

2

B. Cl.

1
A. Sax.

2

T. Sax.

B. Sax.

1
Tpts.

2

Hn.

1
Tbns.

2

Bar./
Euph.

Tuba

Bells

Timp.

Perc. 1

Perc. 2

12

12

mp

mp

mp

mf

mp

10 11 12 13 14

Fl.

Ob.

Bsn.

1
Cls.

2

B. Cl.

1
A. Sax.

2

T. Sax.

B. Sax.

1
Tpts.

2

Hn.

1
Tbns.

2

Bar./
Euph.

Tuba

Bells

Timp.

Perc. 1

Perc. 2

mp

mp

mp

mp

mp

15 16 17 18 19

23

This is a page of a musical score for a large ensemble. The score is arranged in a standard orchestral layout with multiple staves for different instrument groups. The instruments listed on the left side of the page are: Fl. (Flute), Ob. (Oboe), Bsn. (Bassoon), Cls. 1 and 2 (Clarinets), B. Cl. (Bass Clarinet), A. Sax. 1 and 2 (Alto Saxophones), T. Sax. (Tenor Saxophone), B. Sax. (Baritone Saxophone), Tpts. 1 and 2 (Trumpets), Hn. (Horns), Tbn. 1 and 2 (Tubas), Bar./Euph. (Baritone/Euphonium), Tuba, Bells, Timp. (Timpani), Perc. 1 (Percussion 1), and Perc. 2 (Percussion 2). The score begins at measure 20 and continues through measure 25. A large red watermark reading 'Legal Use Requires Purchase' is overlaid diagonally across the page. The score includes dynamic markings such as *mp* (mezzo-piano) and *mf* (mezzo-forte), and articulation marks like accents and slurs. The key signature is one flat (B-flat major or D minor), and the time signature is 4/4. The page number '7' is located in the top right corner, and the number '23' is placed above the first measure of the section shown.

20 21 22 23 24 25

Fl.

Ob.

Bsn.

1
Cls.

2

B. Cl.

A. Sax. 1
2

T. Sax.

B. Sax.

1
Tpts.

2

Hn.

Tbns. 1
2

Bar./
Euph.

Tuba

Bells

Timp.

Perc. 1

Perc. 2

26 27 28 29 30

mp

33

This musical score page features multiple staves for various instruments. The instruments listed on the left are: Fl. (Flute), Ob. (Oboe), Bsn. (Bassoon), Cls. 1 and 2 (Clarinets), B. Cl. (Bass Clarinet), A. Sax. 1 and 2 (Alto Saxophones), T. Sax. (Tenor Saxophone), B. Sax. (Baritone Saxophone), Tpts. 1 and 2 (Trumpets), Hn. (Horn), Tbn. 1 and 2 (Trombones), Bar./Euph. (Baritone/Euphonium), Tuba, Bells, Timp. (Timpani), Perc. 1 (Percussion 1), and Perc. 2 (Percussion 2). The score includes dynamic markings such as *mf* (mezzo-forte) and *f* (forte), and articulation marks like accents and trills. A rehearsal mark '33' is present at the top. A large red watermark 'Preview Only! Legal Use Requires Purchase' is overlaid diagonally across the page. The bottom of the page shows measure numbers 31 through 36.

31 32 33 34 35 36 *mp* *f*

41

Fl. *mf*

Ob. *mf*

Bsn.

1 *mp*

2 *mp*

B. Cl.

A. Sax. 1 *a2* *mf*

2

T. Sax.

B. Sax.

1 *mf*

2 *mf*

Tpts.

Hn.

1

2

Tbns.

Bar./Euph.

Tuba

Bells *mf*

Timp. *f*

Perc. 1 *mf*

Perc. 2 *mf*

37 38 39 40 41 42

Fl. *mp* rit.

Ob. *mp*

Bsn.

1 Cls.

2 Cls.

B. Cl.

1 A. Sax. *mp* a2

2 A. Sax.

T. Sax.

B. Sax.

1 Tpts. rit. *mp*

2 Tpts. *mp*

Hn. *mp*

1 Tbns. *mp*

2 Tbns.

Bar./Euph. *mp*

Tuba *mp*

Bells *mp*

Timp. *mp*

Perc. 1

Perc. 2 *pp*

43 44 45 46 47 48

49 Andante (♩ = 80)

Fl. *p*

Ob. *p*

Bsn. *p legato*

1 *div. p*

2 *p*

B. Cl. *p legato*

A. Sax. 1 *p legato*

2 *p legato*

T. Sax. *p legato*

B. Sax. *p legato*

49 Andante (♩ = 80)

1 *p*

2 *p*

Hn. *p*

Tbns. 1 *p*

2 *p*

Bar./Euph. *p*

Tuba *p*

Bells *p*

Timp. *p*

Perc. 1 Triangle *p*

Perc. 2 *p*

49 50 51 52 53 54 55 56

59

Fl.

Ob.

Bsn.

1
Cls.

2

B. Cl.

1
A. Sax. 2

T. Sax.

B. Sax.

59

1
Tpts.

2

Hn.

1
Tbns. 2

Bar./
Euph.

Tuba

Bells

Timp.

Perc. 1

Perc. 2

57 58 59 60 61 62 63 64 65

p *mf*

p *mf*

p *mf*

p legato *mf*

p legato *mf*

p legato *mf*

p *mf*

p *mf*

p *mf*



67

Fl.

Ob.

Bsn.

1
Cls.

2

B. Cl.

A. Sax. 1
2

T. Sax.

B. Sax.

mp

mf

mf

mf

mp

mp

mf

mf

67

1
Tpts.

2

Hn.

1
Tbns.

2

Bar./
Euph.

Tuba

Bells

Timp.

Perc. 1

Perc. 2

mf

mf

mf

mf

mf

66 67 68 69 70 71 72

rit. 75 A tempo

Fl.

Ob.

Bsn.

1
Cls.

2

B. Cl.

A. Sax. 1
2

T. Sax.

B. Sax.

1
Tpts.

2

Hn.

1
Tbns.

2

Bar./
Euph.

Tuba

Bells

Timp.

Perc. 1

Perc. 2

73 74 *p* 75 *f* 76 77 78 79

Fl. *attacca*

Ob. *attacca*

Bsn. *mp* *p* *attacca*

1 Cls. *mp* *p* *attacca*

2 Cls. *mp* *p* *attacca*

B. Cl. *mp* *p* *attacca*

A. Sax. 1 *attacca*

2 *attacca*

T. Sax. *attacca*

B. Sax. *attacca*

1 Tpts. *attacca*

2 *attacca*

Hn. *attacca*

1 Tbns. *attacca*

2 *attacca*

Bar./Euph. *attacca*

Tuba *attacca*

Bells *attacca*

Timp. *mf* *mp* *p* *attacca*

Perc. 1 *attacca*

Perc. 2 *attacca*

80 81 *f* 82 83 84 85 86 87 88 *attacca*

89 Tempo I

Fl. *mp*

Ob. *mp*

Bsn.

1 Cls.

2 Cls.

B. Cl.

A. Sax. 1 *a2 mp*

2

T. Sax.

B. Sax.

89 Tempo I

1 Tpts.

2

Hn. *mp*

Tbns. 1 *mp*

2

Bar./Euph. *mp*

Tuba

Bells

Timp.

Perc. 1 S.D. *p* *mp*
B.D.

Perc. 2

89

90

91

92

93

Fl.

Ob.

Bsn.

1
Cls.

2
mp

B. Cl.

1
A. Sax.

2

T. Sax.

B. Sax.

1
Tpts.

2

Hn.

1
Tbns.

2

Bar./
Euph.

Tuba

Bells

Timp.

mp

Perc. 1

Perc. 2

94 95 96 97

98

Fl.

Ob.

Bsn.

1

Cls.

2

B. Cl.

A. Sax. 1

2

T. Sax.

B. Sax.

98

1

Tpts.

2

Hn.

Tbns. 1

2

Bar./Euph.

Tuba

Bells

Timp.

Perc. 1

Perc. 2

mf

mf

mp

mp

mp

mp

mp

mp

mp

mp

mp

The image displays a musical score for a symphony or orchestra, covering measures 102 through 105. The score is arranged in multiple staves for various instruments: Flute (Fl.), Oboe (Ob.), Bassoon (Bsn.), Clarinet (Cls.), Bass Clarinet (B. Cl.), Alto Saxophone (A. Sax.), Tenor Saxophone (T. Sax.), Baritone Saxophone (B. Sax.), Trumpets (Tpts.), Horns (Hn.), Trombones (Tbns.), Baritone/Euphonium (Bar./Euph.), Tuba, Bells, Timpani (Timp.), Percussion 1 (Perc. 1), and Percussion 2 (Perc. 2). The music is written in a key with one flat (B-flat) and a 2/4 time signature. Dynamics are marked throughout, including *mf* (mezzo-forte) and *p* (piano). A large, red, diagonal watermark with the text "Preview Only! Legal Use Requires Purchase" is overlaid across the center of the score.

102

103

104

105 *p*

106

Fl. *f*

Ob. *f*

Bsn. *f*

1 *f*

Cl. 2 *f*

B. Cl. *f*

A. Sax. 1 *f* ^{a2}

2 *f*

T. Sax. *f*

B. Sax. *f*

106

1 *f*

Tpts. 2 *f*

Hn. *f*

1 *f*

Tbns. 2 *f*

Bar./Euph. *f*

Tuba *f*

Bells *f*

Timp. *f*

Perc. 1 *f*

Perc. 2 *f*

106 *f* 107 108 109

Fl.

Ob.

Bsn.

1
Cls.

2

B. Cl.

1
A. Sax.

2

T. Sax.

B. Sax.

1
Tpts.

2

Hn.

1
Tbns.

2

Bar./
Euph.

Tuba

Bells

Timp.

Perc. 1

Perc. 2

110 111 112 *f* 113

114 *Meno mosso* (♩ = 100)

Fl. *tr.* *ff* *rit.*

Ob. *tr.* *ff*

Bsn. *ff*

1 *tr.* *ff*

Cl. 2 *tr.* *ff*

B. Cl. *ff*

A. Sax. 1 *ff*

2 *ff*

T. Sax. *ff*

B. Sax. *ff*

114 *Meno mosso* (♩ = 100)

Tpts. 1 *f* *ff* *rit.*

2 *f* *ff*

Hn. *ff*

Tbns. 1 *ff*

2 *ff*

Bar./Euph. *ff*

Tuba *ff*

Bells *ff* dampen

Timp. *ff* dampen

Perc. 1 *ff* dampen

Perc. 2 *ff* choke

114 115 116 *p* 117 *ff* 118 119 120 choke