

CAMPTOWN VARIATIONS

Brian Balmages

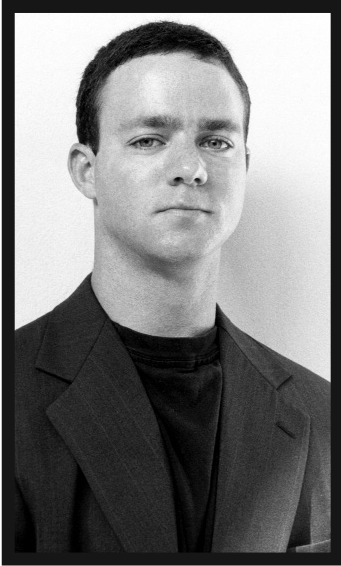
Instrumentation

| | |
|----------------------------------|---------------------------------------------------------|
| 1 - Conductor's Full Score | 3 - Trombone 1 |
| 8 - Flute | 3 - Trombone 2 |
| 2 - Oboe | 2 - Baritone/ Euphonium |
| 1 - Bassoon | 2 - Baritone T.C. |
| 4 - B \flat Clarinet 1 | 3 - Tuba |
| 4 - B \flat Clarinet 2 | 1 - Bells |
| 2 - B \flat Bass Clarinet | 1 - Timpani |
| 6 - E \flat Alto Saxophone | 5 - Percussion 1 Snare Drum Bass Drum |
| 2 - B \flat Tenor Saxophone | 3 - Percussion 2 Crash Cymbals Whip Wood Block |
| 1 - E \flat Baritone Saxophone | |
| 4 - B \flat Trumpet 1 | |
| 4 - B \flat Trumpet 2 | |
| 3 - F Horn | |

FJH is now using a high-speed sorting system for parts.
As a result, all single page parts are collated before multiple page parts.

T H E
F · J · H
M U S I C
C O M P A N Y
I N C.
Frank J. Hackinson

2525 Davie Road, Suite 360
Fort Lauderdale, Florida 33317-7424
www.fjhmusic.com



The Composer

Brian Balmages is an active performer, arranger, and composer. He received his bachelor's degree in music from James Madison University and a master's degree from the University of Miami (FL). Mr. Balmages' works have been performed internationally at conferences such as the Midwest Band and Orchestra Clinic, the Southeastern Tuba-Euphonium Conference, the International Trombone Festival, and the International Trumpet Guild Conference. In addition, his band and orchestral music has been widely performed by bands and orchestras across the country. He is sought after as a clinician and composer and is currently composer-in-residence for the Mid-Atlantic Wind Conductors Conference and Skyline Brass Music Festival.

An accomplished trumpet player, Mr. Balmages performs with the Miami Symphony Orchestra, Florida Chamber Orchestra, and the Skyline Brass. He has performed at Walt Disney World and the Henry Mancini Institute in Los Angeles, and is currently an active performer in the Miami area.

Rehearsal Notes

This is a set of simple variations based on Stephen Foster's *Camptown Races*. The opening is rhythmically driven by the lower-pitched instruments of the ensemble while the melody—a slight harmonic variation of Foster's original work—is partially introduced by the upper voices. After an introduction of the complete tune, a brass chorale quickly changes the style and harmony of the tune while woodwinds continue in the former style. The percussion section recreates the sounds of a horse race before the entire group comes together, changing style one last time.

This piece is a good teaching tool for style and articulation. Students should change style when indicated; each variation possesses a unique sound that is different from previous variations. Beginning at measure 29, the wood block and whip are featured, simulating the sound of a horse race. In measure 34, the whip should be played shockingly loud—as a comic effect. In this section, the director should strive for a good balance between brass and woodwinds and a consistency in note length and articulation within the ensemble. Staccato notes should be long enough to produce a core to the sound of each note.

Brian Balmages

CAMPTOWN VARIATIONS

based on *Camptown Races* by Stephen Foster

BRIAN BALMAGES
(ASCAP)

Allegro (♩ = 120)

The score is for a full orchestra and includes the following parts:

- Flute
- Oboe
- Bassoon
- B♭ Clarinets 1 & 2
- B♭ Bass Clarinet
- E♭ Alto Saxophone
- B♭ Tenor Saxophone
- E♭ Baritone Saxophone
- B♭ Trumpets 1 & 2
- F Horn
- Trombones 1 & 2
- Baritone/Euphonium
- Tuba
- Bells
- Timpani (E♭, B♭)
- Percussion 1 (Snare Drum, Bass Drum)
- Percussion 2 (Crash Cymbals, Whip, Wood Block)

The score is in 4/4 time with a tempo of Allegro (♩ = 120). It features a dynamic range from *f* (forte) to *a2* (second octave). The percussion parts include Snare Drum (S.D.), Bass Drum (B.D.), Crash Cymbals (Cr. Cym.), and Wood Block. The score is marked with a large red watermark: "Preview Use Requires Purchase".

Copyright © 2001 The FJH Music Company Inc.

International Copyright Secured. Made in U.S.A. All Rights Reserved.

WARNING! This arrangement is protected by copyright law. Copying or reproducing it by any method without the publisher's written permission is an infringement of copyright law. Anyone who reproduces copyrighted materials is subject to substantial penalties for each infringement.

Fl.

Ob.

Bsn.

Cl. 1
2

B. Cl.

A. Sax.

T. Sax.

B. Sax.

Tpts. 1
2

Hn.

Tbns. 1
2

Bar./
Euph.

Tuba

Bells

Timp.

Perc. 1

Perc. 2

4 5 6 7

f

a2

Preview Only - Legal Use Requires Purchase

8

div.

Fl.

Ob.

Bsn.

Cls. 1
2

B. Cl.

A. Sax.

T. Sax.

B. Sax.

Tpts. 1
2

Hn.

Tbns. 1
2

Bar./
Euph.

Tuba

Bells

Timp.

Perc. 1

Perc. 2

f

f

f

a2

(Bb to Ab)

rim

8 9 10 11 12

Fl.

Ob.

Bsn.

Cls. 1
2

B. Cl.

A. Sax.

T. Sax.

B. Sax.

Tpts. 1
2

Hn.

Tbns. 1
2

Bar/
Euph.

Tuba

Bells

Timp.

Perc. 1

Perc. 2

choke

let ring

a2

a2

8

17

18

19

20

22

Fl.

Ob.

Bsn.

Cls. 1
2

B. Cl.

A. Sax.

T. Sax.

B. Sax.

22

Tpts. 1
2

Hn.

Tbns. 1
2

Bar/
Euph.

Tuba

Bells

Timp.

(Ab to Bb)

Perc. 1

Perc. 2

a2

21 22 23 24

Fl.

Ob.

Bsn.

Cls. 1
2

B. Cl.

A. Sax.

T. Sax.

B. Sax.

Tpts. 1
2

Hn.

Tbns. 1
2

Bar./
Euph.

Tuba

Bells

Timp.

Perc. 1

Perc. 2

Legal Use Requires Purchase

25

26

27

28

29

Fl.

Ob.

Bsn.

Cls. 1
2

B. Cl.

A. Sax.

T. Sax.

B. Sax.

p

p

p

p

p

p

p

29

Tpts. 1
2

Hn.

Tbns. 1
2

Bar./
Euph.

Tuba

Bells

Timp.

Perc. 1

Perc. 2

dampen

dampen
choke

29 *p* 30 31 32

Fl.

Ob.

Bsn.

Cls. 1
2

B. Cl.

A. Sax.

T. Sax.

B. Sax.

Tpts. 1
2

Hn.

Tbns. 1
2

Bar/
Euph.

Tuba

Bells

Timp.

Perc. 1

Perc. 2

p

p

p

p

p

Solo

B.D. *f*

Whip *f* Solo

33 34 35 36

39

Fl.

Ob.

Bsn.

Cls. 1
2

B. Cl.

A. Sax.

T. Sax.

B. Sax.

Tpts. 1
2

Hn.

Tbns. 1
2

Bar/
Euph.

Tuba

Bells

Timp.

Perc. 1

Perc. 2

37 38 39 40

Fl.
Ob.
Bsn.
Cls. 1
2
B. Cl.
A. Sax.
T. Sax.
B. Sax.
Tpts. 1
2
Hn.
Tbns. 1
2
Bar./
Euph.
Tuba
Bells
Timp.
Perc. 1
Perc. 2

41 42 43 44

47

Fl.

Ob.

Bsn.

Cls. 1
2

B. Cl.

A. Sax.

T. Sax.

B. Sax.

Tpts. 1
2

Hn.

Tbns. 1
2

Bar/
Euph.

Tuba

Bells

Timp.

Perc. 1

Perc. 2

a2

a2

a2

f

Cr. Cym. f

45 46 47 48

Fl. *f*

Ob. *f*

Bsn. *f*

Cls. 1 2 *a2*

B. Cl.

A. Sax.

T. Sax.

B. Sax.

Tpts. 1 2

Hn.

Tbns. 1 2

Bar./ Euph.

Tuba

Bells

Timp.

Perc. 1

Perc. 2

49 50 51 52

div. 8 8 8 8

Fl.

Ob.

Bsn.

Cls. 1 2

B. Cl.

A. Sax.

T. Sax.

B. Sax.

Tpts. 1 2

Hn.

Tbns. 1 2

Bar./ Euph.

Tuba

Bells

Timp.

Perc. 1

Perc. 2

f

dampen dampen

dampen choke

53 54 55 56

f