

# O M I O B A B B I N O C A R O

from GIACOMO PUCCINI'S OPERA *GIANNI SCHICCHI*

Arranged by

*Brian Balmages*

for Solo Tuba or Euphonium and Band

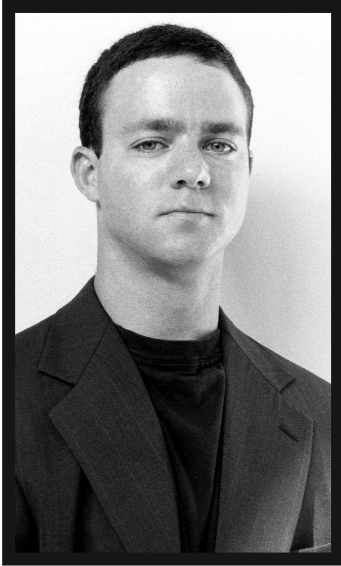
## Instrumentation

1 - Conductor's Full Score	3 - B $\flat$ Trumpet 1
1 - Piccolo	3 - B $\flat$ Trumpet 2
3 - Flute 1	3 - B $\flat$ Trumpet 3
3 - Flute 2	2 - F Horn 1-2
2 - Oboe 1	2 - F Horn 3-4
2 - Oboe 2	2 - Trombone 1
2 - Bassoon	2 - Trombone 2
3 - B $\flat$ Clarinet 1	2 - Trombone 3
3 - B $\flat$ Clarinet 2	2 - Baritone/Euphonium
3 - B $\flat$ Clarinet 3	2 - Baritone T.C.
2 - B $\flat$ Bass Clarinet	4 - Tuba
2 - E $\flat$ Alto Saxophone 1	1 - Solo Euphonium
2 - E $\flat$ Alto Saxophone 2	1 - Solo Baritone T.C.
2 - B $\flat$ Tenor Saxophone	1 - Solo Tuba
2 - E $\flat$ Baritone Saxophone	1 - Timpani
	1 - Vibraphone
	Suspended Cymbal

FJH is now using a high-speed sorting system for parts.  
As a result, all single page parts are collated before multiple page parts.

T H E  
F · J · H  
M U S I C  
C O M P A N Y  
I N C.  
Frank J. Hackinson

2525 Davie Road, Suite 360  
Fort Lauderdale, Florida 33317-7424



## The Composer

Brian Balmages is an active performer, arranger, and composer. He received his bachelor's degree in music from James Madison University and a master's degree from the University of Miami (FL). Mr. Balmages' works have been performed internationally at conferences such as the Southeastern Tuba-Euphonium Conference, the International Trombone Festival, and the International Trumpet Guild Conference. In addition, his band and orchestral music has been widely performed by bands and orchestras

across the country. He is sought after as a clinician and composer and is currently composer-in-residence for the Skyline Brass Music Festival.

An accomplished trumpet player, Mr. Balmages performs with the Miami Symphony Orchestra, Florida Chamber Orchestra, and the Skyline Brass. He has performed at Walt Disney World and the Henry Mancini Institute in Los Angeles, and is currently an active performer in the Miami area.

---

## The Arrangement

This arrangement was written for the James Madison University Wind Symphony.

J. Patrick Rooney, Director

Kevin J. Stees, Tuba Soloist

The lyric lines of the famous aria weave a graceful, tonal showcase through the full range of the solo tuba line.

*Brian Balmages*

# O MIO BABBINO CARO

from *Gianni Schicchi*

for Solo Tuba or Euphonium and Band

GIACOMO PUCCINI  
Arranged by  
BRIAN BALMAGES  
(ASCAP)

Andantino ingenuo (♩ = 88)

rit.

5

A tempo

The score is divided into two systems. The first system includes Piccolo, Flutes (1, 2), Oboes (1, 2), Bassoon, B♭ Clarinets (1, 2, 3), B♭ Bass Clarinet, Eb Alto Saxophones (1, 2), B♭ Tenor Saxophone, and Eb Baritone Saxophone. The second system includes B♭ Trumpets (1, 2, 3), F Horns (1, 2, 3, 4), Trombones (1, 2, 3), Baritone/Euphonium, Tuba, Solo Tuba, Timpani (with (G, C, G) marking), Suspended Cymbal, and Vibraphone. Performance markings include *mf*, *mp*, and *p*. A large red watermark 'Preview Only' is overlaid diagonally across the score.

This arrangement © 2000 The FJH Music Company Inc.  
International Copyright Secured. Made in U.S.A. All Rights Reserved.

WARNING! This arrangement is protected by copyright law. Copying or reproducing it by any method without the publisher's written permission is an infringement of copyright law. Anyone who reproduces copyrighted materials is subject to substantial penalties for each infringement.

poco rit.

Picc.

1

Fls.

2

Obs. 1

2

Bsn.

1

Clas. 2

3

B. Cl.

A. Saxes

1

2

T. Sax.

B. Sax.

1

2

Tpts.

3

Hns.

1

2

3

4

Tbns.

1

2

3

Bar./Euph.

Tuba

Solo

Timp.

Sus. Cym.

Vibr.

poco rit.

(Play only if no bass clar. or bsn.)

8 9 10 11 12

13 **A tempo**

Picc.

1  
Fls.

2  
Obs. 1  
2

Bsn.

1  
Cls. 2  
3

B. Cl.

1  
A. Saxes 2

T. Sax.

B. Sax.

13 **A tempo**

1  
2  
Tpts. 3

1  
2  
Hns. 3  
4

1  
2  
Tbns. 3

Bar./  
Euph. *p*

Tuba *p*

Solo

Timp. *p*

Sus. Cym.

Vibr.

13 14 15 16

17

Picc.

1

Fls.

2

Obs. 1

2

Bsn.

1

2

3

B. Cl.

A. Saxes

1

2

T. Sax.

B. Sax.

17

1

2

Tpts.

3

1

2

3

4

Hns.

1

2

3

Tbns.

Bar./ Euph.

Tuba

Solo

Timp.

Sus. Cym.

Vibr.

*mf*

*mf*

*mf*

*mf*

*mf*

*a2*

*mf*

*sim*

*p*

17 18 19 20

25 A tempo

rit.

Picc.

1

Fls.

2

Obs. 1

2

Bsn.

1

2

3

Cls.

B. Cl.

1

2

A. Saxes

T. Sax.

B. Sax.

1

2

3

Tpts.

Hns.

1

2

3

4

Tbns.

1

2

3

Bar./ Euph.

Tuba

Solo

Timp.

Sus. Cym.

Vibr.

mf

f

rit.

25 A tempo

f

a2

mf

mp

21 22 23 24 25

Più lento

Picc. 1

Fls. 2

Obs. 1, 2

Bsn. (Play if only one tuba)

Cls. 1, 2, 3

B. Cl. (Play if only one tuba)

A. Sax. 1, 2

T. Sax.

B. Sax.

Tpts. 1, 2, 3

Hns. 1, 2, 3, 4

Tbns. 1, 2, 3

Bar./Euph.

Tuba

Solo

Timp.

Sus. Cym.

Vibr.

mf, p, Solo, Ob. 2

26, 27, 28, 29, 30, 31