

Illuminations

Ryan Meeboer

ISBN 978-1-55473-866-3



9 781554 738663



6 85462 01867 3

Instrumentation:

Flute - 8
Oboe - 2
Bb Clarinet 1 - 4
Bb Clarinet 2 - 4
Bb Clarinet 3 - 4
Bb Bass Clarinet - 1
Bassoon - 2
Eb Alto Saxophone 1 - 2
Eb Alto Saxophone 2 - 2
Bb Tenor Saxophone - 2
Eb Baritone Saxophone - 1
Bb Trumpet 1 - 2
Bb Trumpet 2 - 2
Bb Trumpet 3 - 2
F Horn 1,2 - 4
Trombone 1 - 2
Trombone 2 - 2
Trombone 3 - 2
Baritone - 1
Baritone Treble Clef - 1
Tuba - 4
String Bass - 1
Xylophone, Bells - 1
Timpani - 1
Snare Drum, Bass Drum - 1
Percussion (Crash Cymbals, Tambourine, Triangle,
Wind Chimes, Cabasa, Suspended Cymbal) - 4

Illuminations

Ryan Meeboer

This piece was commissioned by the Burlington Concert Band, to be played for the opening of the Burlington Performing Arts Center, in October of 2011. The campaign for the city to build this structure has taken several years and once it became a reality, the campaign was deemed, 'The Possible Dream'. The title, *Illuminations*, reflects both the brilliance of the building's architecture and the artistic talents (music, drama, art, and dance) that will take place there upon its completion.

The opening section, *Ablaze*, has the introduction, much like a fanfare, to represent the celebration of the 'dream come true', which is to be played boldly, with crisp staccatos. At measure 18, it moves into a broad theme with the tenor saxophone and baritone in a duet, accompanied by a bright flute ostinato. The backgrounds are to be kept nice and light to keep the brightness of the piece alive, while the smooth melody is played by the duet. When the call response section begins at measure 36, be sure that the two parts are balanced. The repeat of the introduction, at measure 52, is to be played with the same energy as it was at the beginning.

Glistening, is a lyrical section, featuring solos and solis by various players and sections of the band. At measure 85, the flute introduces the theme over a clarinet drone, before a clarinet counter melody is brought in at measure 89. The brass take over at measure 93, with the trumpet and horns ornamenting the theme a little. The low brass and winds get the opportunity to play the melody, starting at measure 101, with a baritone soloist playing a counter melody along with it. With everything else being played here, be sure the main melody is always clearly heard. After all the instruments are in to build up the momentum of the movement, the lyrical section ends with a alto saxophone solo.

The final section, *The Radiance*, is as energetic as the first, with the opening fanfare being played in a modified form after a percussion break at measure 117. The melody of this movement occurs in a call and response format, so again, be sure the two parts playing the melody are well balanced. When all the instruments drop out at measure 161, the tempo needs to remain consistent with the previous measures. To end the piece, the performers should play with lots of energy and volume, even though the instruments are in and out for the final measures of the piece.

Ryan Meeboer is a music educator, who obtained his degree through the Ontario Institute for Studies in Education at the University of Toronto. As a composer, he has written and arranged many pieces for concert band, jazz band, and small ensembles. His young band piece, *Last Voyage of the Queen Anne's Revenge*, has been well received by performers, educators, and audiences, and his pieces are starting to be found on festival and contest lists. As a performer, he has had experience in several groups, including concert and stage bands, chamber choir, vocal jazz ensemble, acoustic duets, and the Hamilton based swing group, "The Main Swing Connection".

Ryan began studying music at the age of seven through private guitar lessons. During his years in elementary and secondary school, he gained experience in several families of instruments. Focusing on music education and theory (including composition and orchestration), he attended McMaster University to achieve his honours degree in music. Ryan is currently a teacher for the Halton District School Board in Ontario, where he continues to compose and arrange.

Please contact the composer if you require any further information about this piece or his availability for commissioning new works and appearances.

ryan.meeboer@enpmusic.com

ISBN: 9781554738663
CATALOG NUMBER: CB12227

COST: \$65.00
DURATION: 5:00

DIFFICULTY RATING: GRADE 3
Concert Band

Commissioned by the Burlington Concert Band Don Allan, Director
for the opening of the Burlington Performing Arts Center

ILLUMINATIONS

Ryan Meeboer

ABLAZE

With Spirit $\text{♩} = 160$ ($\text{♩} = \text{♩}$ always)

2

3

4

5

6

Flute

Oboe

B♭ Clarinet 1

B♭ Clarinet 2,3

B♭ Bass Clarinet

Bassoon

E♭ Alto Saxophone 1,2

B♭ Tenor Saxophone

E♭ Baritone Saxophone

B♭ Trumpet 1

B♭ Trumpet 2,3

F Horn 1,2

Trombone 1

Trombone 2,3

Baritone

Tuba

Xylophone

Bells

Timpani

F-B♭-C-E♭

Snare Drum

Bass Drum

Crash Cymbals

Tambourine

Triangle

Wind Chimes

Cabasa

Suspended Cymbal

Preview Only

Legal Use Requires Purchase

Choke

7 8 9 10 11 12

Fl

Ob

Cl 1

Cl 2,3

B Cl

Bsn

A Sax 1,2

T Sax

B Sax

Tpt 1

Tpt 2,3

Hn 1,2

Trbn 1

Trbn 2,3

Bari

Tuba

Xylo

Bells

Timp

S.D.
B.D.

C.C.
Tamb

Tri

W.C.

Cab

S.C. ILLUMINATIONS pg. 2

Legal Use Requires Purchase

13 14 15 16 17 18 19

Fl

Ob

Cl 1

Cl 2,3

B Cl

Bsn

A Sax 1,2

T Sax

B Sax

Tpt 1

Tpt 2,3

Hn 1,2

Trbn 1

Trbn 2,3

Bari

Tuba

Xylo

Bells

Timp

S.D.
B.D.

C.C.
Tamb

Tri

W.C.

Cab

S.C.

one player
mf

one player
mf

Cabasa
f

choke

ILLUMINATIONS pg. 3

20

21

22

23

24

25

Fl *p*

Ob

Cl 1

Cl 2,3

B Cl

Bsn

A Sax 1,2 *p*

T Sax

B Sax

Tpt 1

Tpt 2,3

Hn 1,2 *mp*

Trbn 1 *mp*

Trbn 2,3 *mp*

Bari

Tuba *mp*

Xylo

Bells

Timp

S.D.
B.D.

C.C.
Tamb
Tri

W.C.
Cab
S.C. *p*

ILLUMINATIONS pg. 4

26

27

28

29

30

31

Fl

Ob

Cl 1

Cl 2,3

B Cl

Bsn

A Sax 1,2

T Sax

B Sax

Tpt 1

Tpt 2,3

Hn 1,2

Trbn 1

Trbn 2,3

Bari

Tuba

Xylo

Bells

Timp

S.D.
B.D.

C.C.
Tamb

Tri

W.C.

Cab

S.C.

ILLUMINATIONS pg. 5

32

33

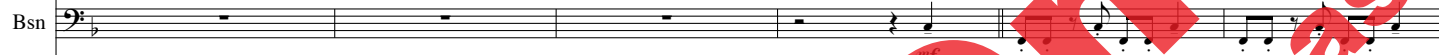
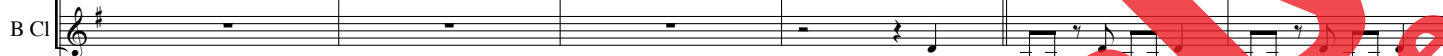
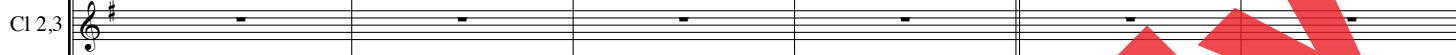
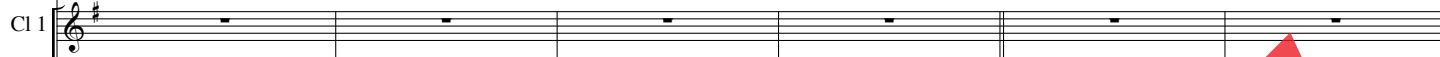
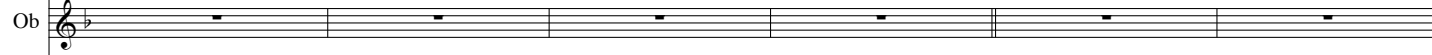
34

35

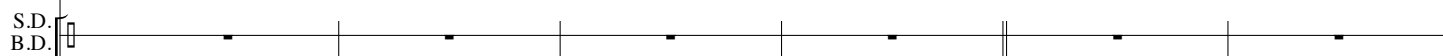
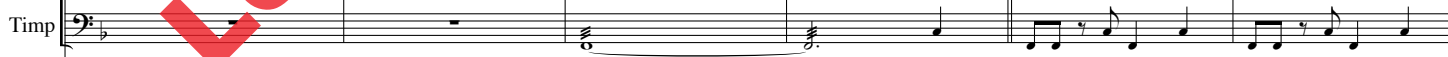
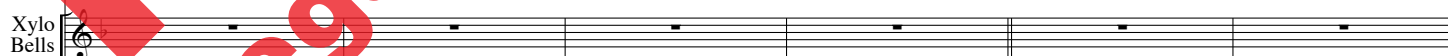
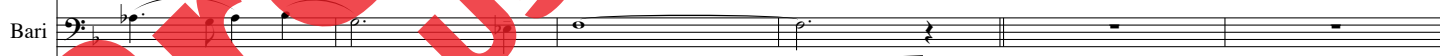
36

37

Fl



A Sax 1,2



38

39

40

41

42

43

Fl *mf*

Ob *tutti*
mf

Cl 1 *tutti*
mf

Cl 2,3 *mf*

B Cl

Bsn

A Sax 1,2 *mf*

T Sax *tutti*
mf

B Sax

Tpt 1

Tpt 2,3

Hn 1,2

Trbn 1

Trbn 2,3

Bari *tutti*
mf

Tuba

Xylo
Bells *mf*

Timp

S.D.
B.D. *mf*

C.C.
Tamb
Tri
W.C.
Cab
S.C. *mf*

Sus. Cym (mallets) *p*

ILLUMINATIONS pg. 7

S.C. ILLUMINATIONS pg. 8

50

51

52

53

54

55

Fl *sub. p* *f* *f*

Ob *sub. p* *f* *f*

Cl 1 *sub. p* *f* *f*

Cl 2,3 *sub. p* *f* *f*

B Cl *sub. p* *f* *f*

Bsn *f* *f*

A Sax 1,2 *sub. p* *f* *fp*

T Sax *f* *fp*

B Sax *sub. p* *f* *f*

Tpt 1 *sub. p* *f* *fp*

Tpt 2,3 *sub. p* *f* *f*

Hn 1,2 *f* *f*

Trbn 1 *sub. p* *f* *f*

Trbn 2,3 *sub. p* *f* *f*

Bari *f* *f*

Tuba *sub. p* *f* *f*

Xylo Bells *f* *f*

Timp *sub. p* *f* *f*

S.D. *sub. p* *f*

B.D. *f*

C.C. Crash Cymbals *f* choke

Tamb

Tri

W.C.

Cab

S.C.

62 63 64 65 66 67

Fl

Ob

Cl 1

Cl 2,3

B Cl

Bsn

A Sax 1,2

T Sax

B Sax

Tpt 1

Tpt 2,3

Hn 1,2

Trbn 1

Trbn 2,3

Bari

Tuba

Xylo

Bells

Timp

S.D.

B.D.

C.C.

Tamb

Tri

W.C.

Cab

S.C.

choke

choke

ILLUMINATIONS pg. 11

68

69

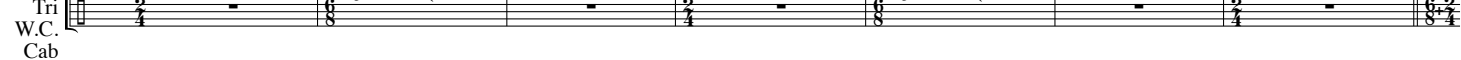
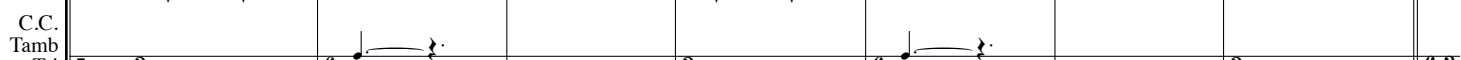
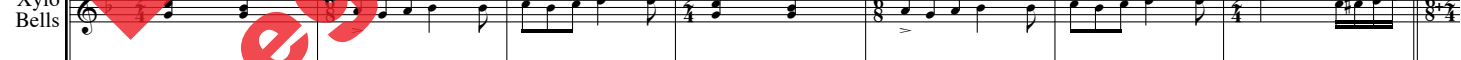
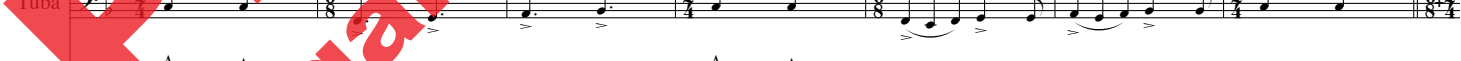
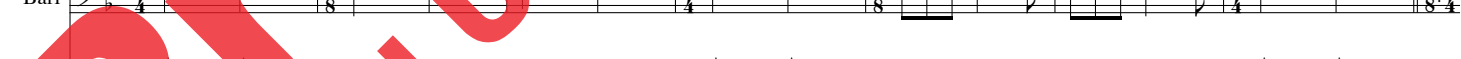
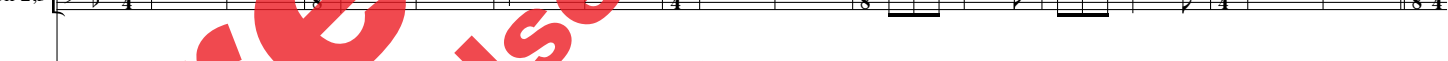
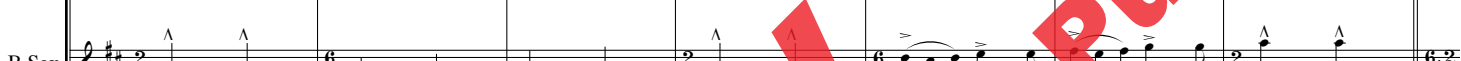
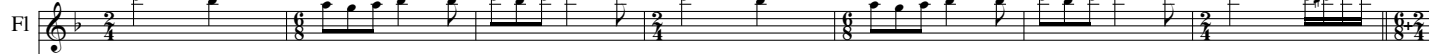
70

71

72

73

74



Fl

Ob

Cl 1

Cl 2,3

B Cl

Bsn

A Sax 1,2

T Sax

B Sax

Tpt 1

Tpt 2,3

Hn 1,2

Trbn 1

Trbn 2,3

Bari

Tuba

Xylo

Bells

Timp

S.D.
B.D.

C.C.
Tamb

Tri

W.C.

Cab

S.C.

change to D

Cab.

Wind chimes

ILLUMINATIONS pg. 13

84

85

86

87

88

89

90

91

92

Fl *one player*
mp

Ob

Cl 1 *one player*
mp

Cl 2,3

B Cl *p*

Bsn

A Sax 1,2

T Sax

B Sax

Tpt 1 *mp*

Tpt 2,3 *mp*

Hn 1,2 *mp*

Trbn 1

Trbn 2,3

Bari

Tuba

B Cl cues *p*

Xylo
Bells *p*

Timp

S.D.
B.D.

C.C.
Tamb

Tri

W.C.

Cab

S.C.

ILLUMINATIONS pg. 14

101

102

103

104

105

106

107

108

Fl

Ob

Cl 1 *tutti*

Cl 2,3 *mp*

B Cl *mp*

Bsn

A Sax 1,2

T Sax

B Sax

Tpt 1

Tpt 2,3

Hn 1,2

Trbn 1

Trbn 2,3

Bari *one player* *mf*

Tuba

Xylo

Bells *Bells*

Timp

S.D.
B.D.

C.C.
Tamb

Tri *Triangle*

W.C.
Cab *mf*

S.C. *Sus. Cym (mallets)* *p*

ILLUMINATIONS pg. 16

109

110

111

112

113

114

115

116

Fl *f* *rit.* *Slower* $\text{♩} = 56$

Ob *f*

Cl 1 *f* *mp* *p*

Cl 2,3 *f* *mp* *p*

B Cl *f* *mp* *p*

Bsn *f*

A Sax 1,2 *f* *mf* *one player*

T Sax *f*

B Sax *f*

Tpt 1 *f*

Tpt 2,3 *f*

Hn 1,2 *f*

Trbn 1 *f*

Trbn 2,3 *f* *tutti*

Bari *f*

Tuba *f*

Xylo *f*

Bells *f*

Timp

S.D. *f*

B.D. *f*

C.C. *f*

Tamb *f*

Tri *f*

W.C. *p*

Cab

S.C.

124

Tempo I = 160

FL

Ob

Cl 1

Cl 2,3

B Cl

Bsn

A Sax 1,2

T Sax

B Sax

Tpt 1

Tpt 2,3

Hn 1,2

Trbn 1

Trbn 2,3

Bari

Tuba

Xylophone

Xylo Bells

Timp

S.D.
B.D.

C.C.
Tamb

Tri

W.C.

cab

S.C.

ILLUMINATIONS pg. 18

125 126 127 128 129 130 131 132

Fl

Ob

Cl 1

Cl 2,3

B Cl

Bsn

A Sax 1,2

T Sax

B Sax

Tpt 1

Tpt 2,3

Hn 1,2

Trbn 1

Trbn 2,3

Bari

Tuba

Xylo
Bells

Timp

S.D.
B.D.

C.C.
Tamb

Tri

W.C.

Cab

S.C.

mf

fp

mp

only

dampen

choke

mp

ILLUMINATIONS pg. 19

133

134

135

136

137

138

139

140

Fl *mf* *fp* *mf* *fp*

Ob

Cl 1 *mf* *fp* *mf* *fp*

Cl 2,3

B Cl

Bsn

A Sax 1,2 *fp* *mf* *fp* *mf*

T Sax

B Sax

Tpt 1

Tpt 2,3

Hn 1,2

Trbn 1

Trbn 2,3

Bari

Tuba

Xylo
Bells

Timp

S.D.
B.D.

C.C.
Tamb
Tri
W.C.
Cab
S.C.

141

142

143

144

145

146

147

148

Fl *mf*

Ob

Cl 1 *mf*

Cl 2,3 *mf*

B Cl *mf*

Bsn *mf*

A Sax 1,2

T Sax *mf*

B Sax *mf*

Tpt 1 *mf* *fp*

Tpt 2,3 *mf* *fp*

Hn 1,2 *mf*

Trbn 1 *mf*

Trbn 2,3 *mf*

Bari *mf*

Tuba *mf*

Xylo
Bells

Timp *mf*

S.D.
B.D. *mf*

C.C.
Tamb. *mf*

Tri

W.C. *mf*

Cab

S.C. *mf*

ILLUMINATIONS pg. 21

149

150

151

152

153

154

155

156

Fl

Ob

Cl 1

Cl 2,3

B Cl

Bsn

A Sax 1,2

T Sax

B Sax

Tpt 1

Tpt 2,3

Hn 1,2

Trbn 1

Trbn 2,3

Bari

Tuba

Xylo

Bells

Timp

S.D.

B.D.

C.C.

Tamb

Tri

W.C.

Cab

S.C.

ILLUMINATIONS pg. 22

157

158

159

160

161

162

163

164

Fl

Ob

Cl 1

Cl 2,3

B Cl

Bsn

A Sax 1,2

T Sax

B Sax

Tpt 1

Tpt 2,3

Hn 1,2

Trbn 1

Trbn 2,3

Bari

Tuba

Xylo

Bells

Timp

S.D.

B.D.

C.C.

Tamb

Tri

W.C.

Cab

S.C.

maintain tempo

p

mf

one player

AB Cl cues

dampen

p

ILLUMINATIONS pg. 23

165

166

167

168

169

170

171

172

Fl *mp*

Ob *mp*

Cl 1 *mp*

Cl 2,3 *mp*

B Cl

Bsn

A Sax 1,2

T Sax

B Sax

Tpt 1 *mp*

Tpt 2,3 *mp*

Hn 1,2 *mp*

Trbn 1 *p*

Trbn 2,3 *p*

Bari *mp*

Tuba *mp* play

Xylo

Bells

Timp

S.D.
B.D.

C.C.
Tamb

Tri

W.C.

Cab

S.C.

Sus. Cym (mallets) *p* *mf*

ILLUMINATIONS pg. 24

173 174 175 176 177 178 179 180

Fl

Ob

Cl 1

Cl 2,3

B Cl

Bsn

A Sax 1,2

T Sax

B Sax

Tpt 1

Tpt 2,3

Hn 1,2

Trbn 1

Trbn 2,3

Bari

Tuba

Xylo

Bells

Timp

S.D.

B.D.

C.C.

Tamb

Tri

W.C.

Cab

S.C.

ILLUMINATIONS pg. 25

181

182

183

184

185

186

187

188

Fl

Ob

Cl 1

Cl 2,3

B Cl

Bsn

A Sax 1,2

T Sax

B Sax

Tpt 1

Tpt 2,3

Hn 1,2

Trbn 1

Trbn 2,3

Bari

Tuba

Xylo

Bells

Timp

S.D.

B.D.

C.C.

Tamb

Tri

W.C.

Cab

S.C.

ILLUMINATIONS pg. 26

