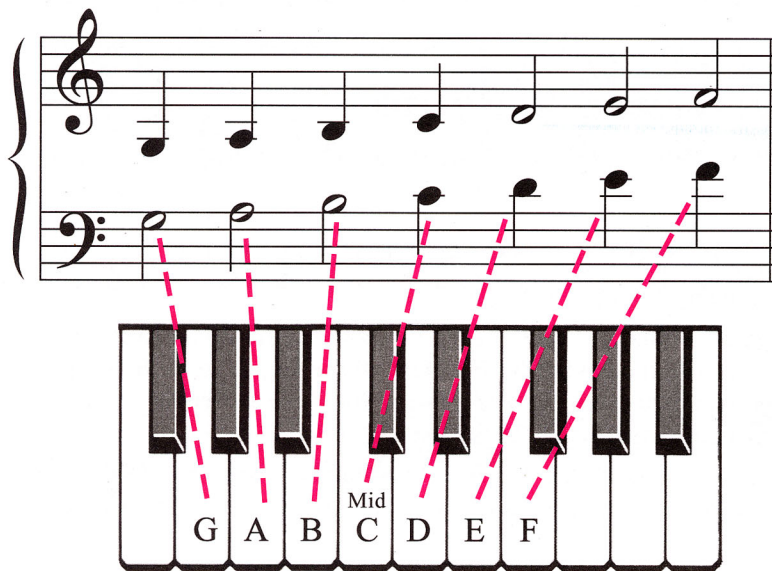


Lesson 1: Inner Leger Lines

Name _____ Date _____ Score _____

LEGER LINES are short extra lines used to extend the staff up or down. Middle C is the most common note written on a leger line.

Leger lines *below* the *treble* staff may be thought of as “borrowed” from the top of the bass staff. Leger lines *above* the *bass* staff are likewise “borrowed” from the bottom of the treble staff. This is illustrated in the line of notes below.



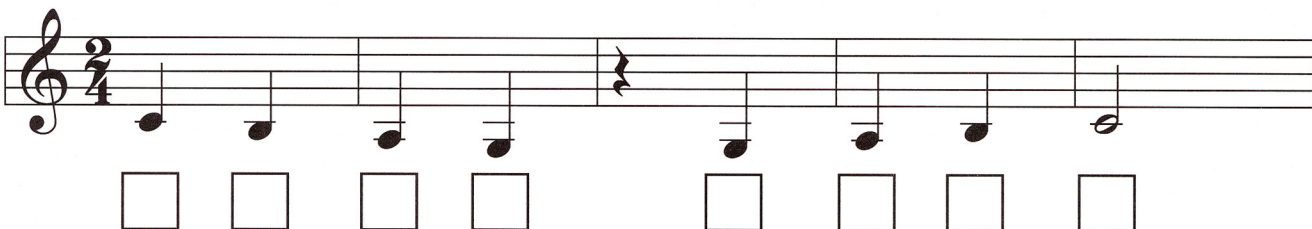
Notes with *stems up* are for Right Hand.

Notes with *stems down* are for Left Hand.

DIRECTIONS: Write the letter names in the box below each note.



(Sample)



KEYBOARD ASSIGNMENT: After completing the written work, play all notes at the keyboard at least three times per day. Say the letter names aloud as you play.

Lesson 27: Transposing by Scale Degrees

Name _____ Date _____ Score _____

To *transpose* a melody means to play it in a *different key*, starting on a higher or lower note. When transposing, you use a different *key signature*, notes from a different *scale* and a different *hand position*.

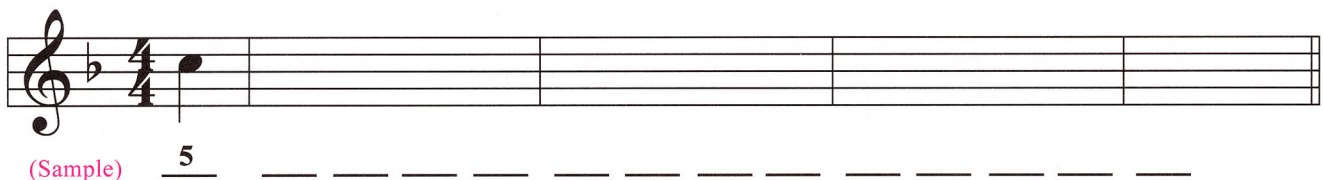
The first 7 notes of the scales of C, F and G Major are shown with their scale *degree numbers*. These will be used to help in transposing.



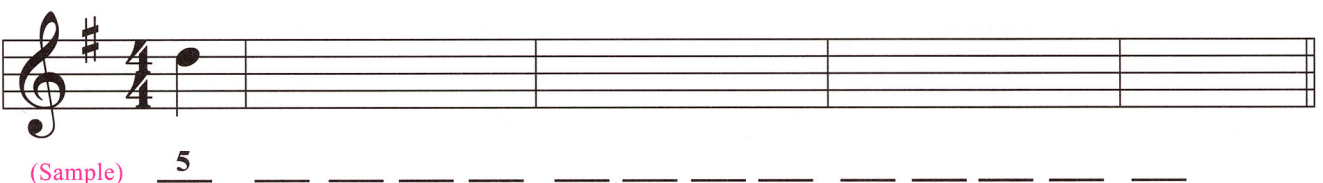
The first 4 measures of “America the Beautiful” are printed below in the key of *C Major*. Scale degree numbers have been written under each note.



DIRECTIONS: Write the scale degree numbers for “America the Beautiful” on the lines below each measure. Then write the *notes* for “America the Beautiful” in the key of *F Major*. The starting note is printed. Watch for different note values (half, quarter, eighth, etc.)



DIRECTIONS: Write the scale degree numbers for “America the Beautiful” on the lines below each measure. Then write the *notes* for “America the Beautiful” in the key of *G Major*. The starting note is printed.



KEYBOARD ASSIGNMENT: After completing the written work, play “America the Beautiful” in all three keys. Do this at least three times per day. For an extra assignment, transpose “America the Beautiful” to the key of B-flat Major (see top of Lesson 28).