

Lesson 7. Slurs and Phrases in Melody Patterns

Name _____ Date _____ Score _____

Learning to recognize melody patterns with slurs and phrase marks is very helpful in sight reading. The position of the curved line, *above or below the staff*, will help you to find various melody patterns.

DIRECTIONS: This bass clef melody example contains *three* different patterns. These patterns are labeled with a *red number* at the start of the phrase. Write the number 1, 2 or 3 above all other phrases where the same melody pattern recurs. *Be careful*, one phrase does *not match* 1, 2 or 3. This phrase should not be numbered.

The bass clef melody example consists of four staves. The first staff has a slur above the staff labeled '1' and a slur below the staff labeled '2'. The second staff has a slur above the staff and a slur below the staff labeled '3'. The third and fourth staves have slurs below the staff.

DIRECTIONS: This treble clef melody example contains *three* different patterns. These patterns are labeled with a *red number* at the start of the phrase. Write the number 1, 2 or 3 above all other phrases where the same melody pattern recurs. *Be careful*, one phrase does *not match* 1, 2 or 3. This phrase should not be numbered.

The treble clef melody example consists of four staves. The first staff has a slur above the staff labeled '1' and a slur below the staff labeled '2'. The second staff has a slur above the staff and a slur below the staff labeled '3'. The third and fourth staves have slurs below the staff.

Lesson 19. Reading Intervals of 2nds

Name _____ Date _____ Score _____

Intervals of 2nds are easy to identify because the notes *always touch each other*. This also makes them difficult to read because the notes are so close to each other.

READ THE LOWER NOTE FIRST –

The **lower** note is always on the **left of the stem**. This is true whether the stem goes up or down.

DIRECTIONS: All intervals on this page are 2nds. Write the letter names in the boxes below each interval. If necessary, look for the letter names in the keyboard chart on the back inside cover.

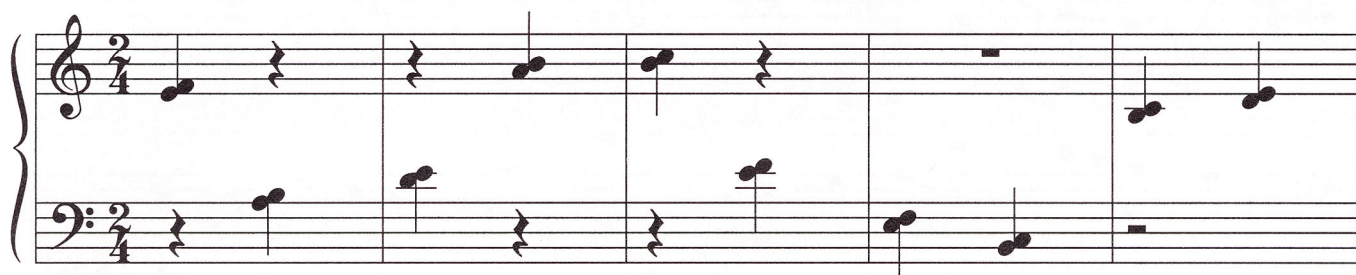
It is very important to also do the keyboard assignment (see below).



(sample)

G		
F		





KEYBOARD ASSIGNMENT: Play the notes in each measure. Try to **read only the lower note**, and remember that the **lower** note is always to the **left of the stem**. Do this three times a day.

TOUCH TRAINING: As you play, be aware of the *feeling* in your fingers and hands. You want to coordinate the *feeling* for these intervals with the *visual image* of the notes on the page.

EAR TRAINING: 2nds have an unusual dissonant (harsh) sound. Listen carefully for this sound as you play.