

# Lesson 1. C Major Arpeggio

Pupil's Name.....

Completion Date.....

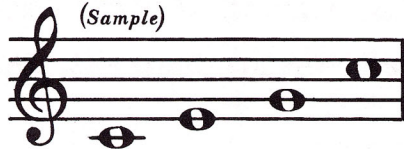
Assignment Date.....

Grade or Star.....

**DIRECTIONS:** On the staves below, write whole notes for the root position and inversions of the C major arpeggio. See chart at bottom of page. The sample is already marked as it should be.

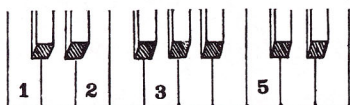
Root Position

(Sample)



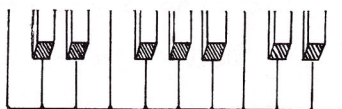
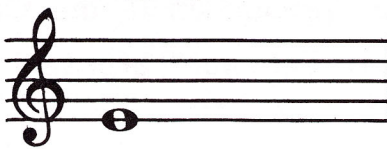
C E G C

(Write letter names on dotted lines)

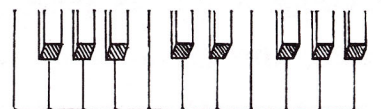
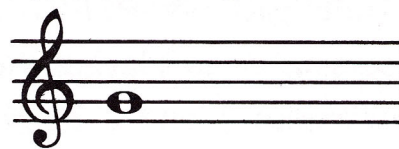


(Write R.H. finger numbers on keyboard diagrams. See chart below.)

First Inversion



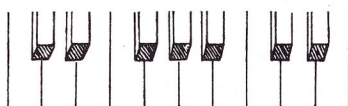
Second Inversion



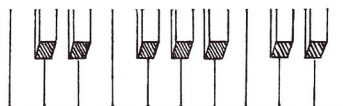
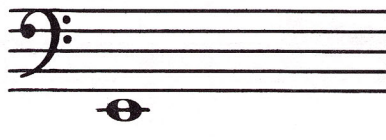
Root Position



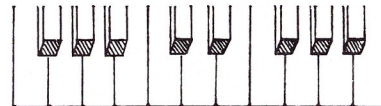
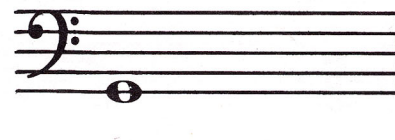
(Write letter names on dotted lines)



First Inversion



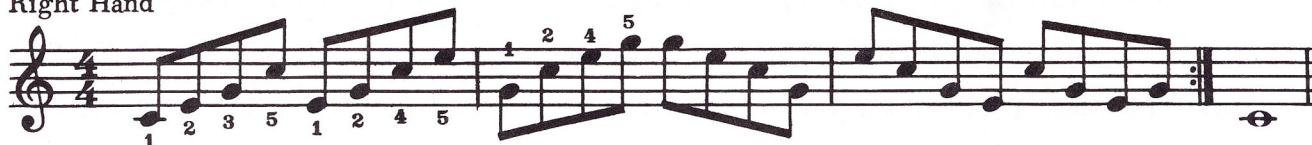
Second Inversion



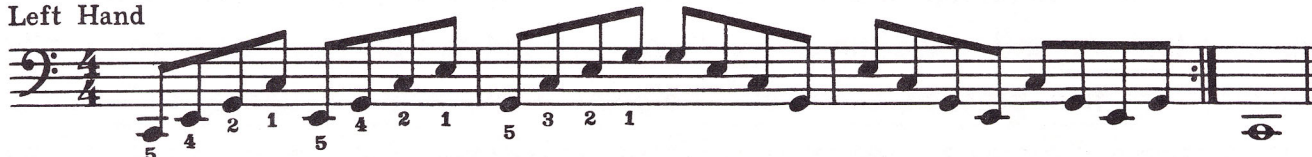
(Write L.H. finger numbers on keyboard diagrams. See chart below.)

## KEYBOARD ASSIGNMENT

Right Hand



Left Hand



## FINGERING AND INVERSION CHART

Left Hand



Root Position First Inversion Second Inversion

Right Hand



Root Position First Inversion Second Inversion

# Lesson 17. B Minor Arpeggio

Pupil's Name.....

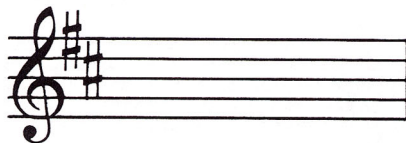
Completion Date.....

Assignment Date.....

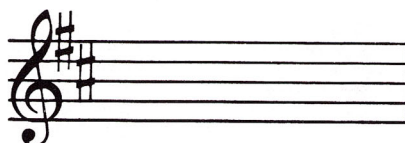
Grade or Star.....

DIRECTIONS: On the staves below, write whole notes for the root position and inversions of the B minor arpeggio. See chart at bottom of page.

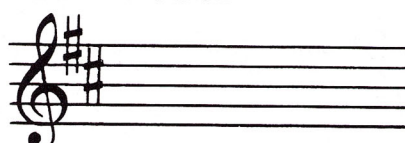
Root Position



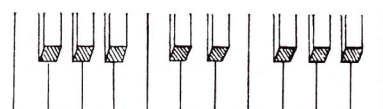
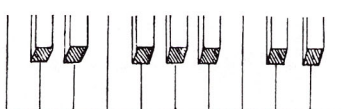
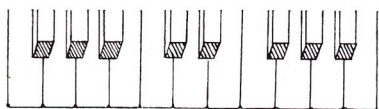
First Inversion



Second Inversion

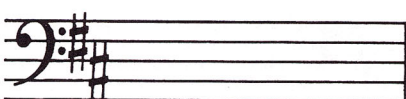


(Write letter names.)

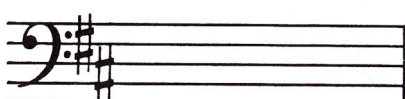


(Write R.H. finger numbers. See chart below.)

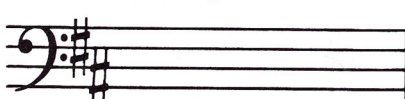
Root Position



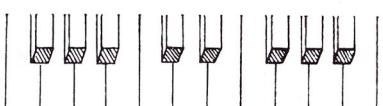
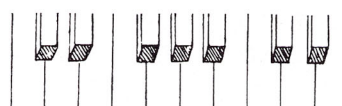
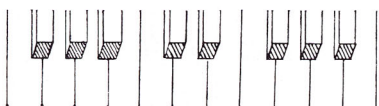
First Inversion



Second Inversion



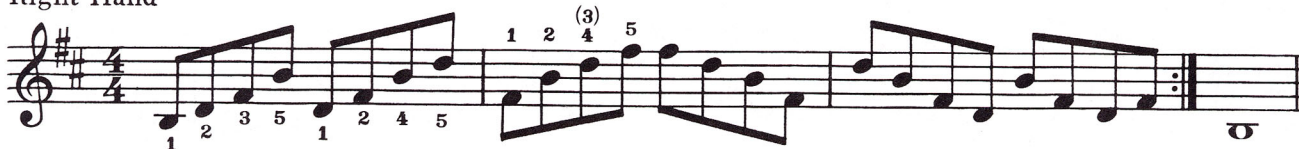
(Write letter names.)



(Write L.H. finger numbers. See chart below.)

## KEYBOARD ASSIGNMENT

Right Hand

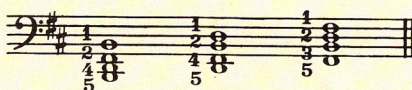


Left Hand



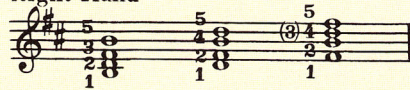
## FINGERING AND INVERSION CHART

Left Hand



Root Position First Inversion Second Inversion

Right Hand



Root Position First Inversion Second Inversion