

Theory Workbook

Primer Level

By Wesley Schaum

Schaum's Pathway to Musicianship

The *Schaum Making Music Piano Library* integrates method, theory, technic and note reading with appealing materials for recital and repertoire. Schaum's well-proven motivational philosophy and sound pedagogy are widely recognized.

FOREWORD

This workbook presents basic music theory intended to supplement any beginner method book and for all ages. Emphasis is placed on two important note reading concepts. 1.) Correlation of up-and-down at the keyboard and up-and-down movement of notes in the staff. 2.) Simple interval reading and recognition in the staff and at the keyboard.

These workbook pages are intended primarily as homework. The pages should be checked and corrected before the "keyboard assignment" is started. Regular keyboard practice of these workbook pages is essential to reinforce the learning process. The back inside cover of this book has blank staff lines for extra written assignments.

INDEX

bar line.....	9	forte (loud).....	32	natural sign.....	26
bass clef.....	8	G chord.....	34	piano (soft).....	32
beam.....	27	grand staff.....	9	quarter note.....	17
brace.....	9	half note.....	17	quarter rest.....	23
C chord.....	33	half rest.....	23	rest.....	23
clef.....	8	interval (2nd, 3rd).....	13	R.H. (right hand).....	9
counting.....	17, 18	interval (4th, 5th).....	21	root.....	33
crescendo.....	32	key of C major.....	26	sharp.....	25
diminuendo.....	32	key of F major.....	26	space.....	7, 35
dotted half note.....	17	key of G major.....	26	staff.....	7
eighth notes.....	27, 28	key signature.....	26	stem.....	27
expression marks.....	32	L.H. (left hand).....	9	time signature.....	18
F chord.....	33	line.....	7, 35	treble clef.....	8
finger numbers.....	8	manuscript paper.....	36	whole note.....	17
flat.....	25	measure.....	9	whole rest.....	23, 28
		middle C.....	9		

Schaum Publications, Inc.

10235 N. Port Washington Rd. • Mequon WI 53092

www.schaumpiano.net

© Copyright 1984 and 2005 by Schaum Publications, Inc., Mequon, Wisconsin
International Copyright Secured • All Rights Reserved • Printed in U.S.A.
ISBN-13: 978-1-936098-12-5

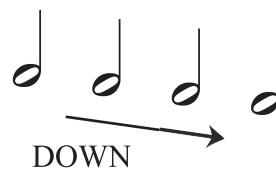
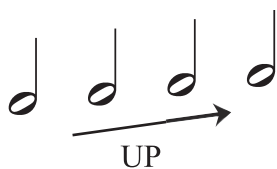
Warning: The reproduction of any part of this publication without prior written consent of Schaum Publications, Inc. is prohibited by U.S. Copyright Law and subject to penalty. This prohibition includes all forms of printed media (including any method of photocopy), all forms of electronic media (including computer images), all forms of film media (including filmstrips, transparencies, slides and movies), all forms of sound recordings (including cassette tapes and compact disks), and all forms of video media (including video tapes and DVD).

02-80

Lesson 6: Note Movement: Up, Down or Repeat

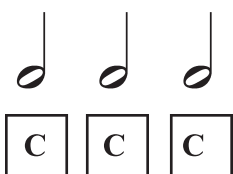
Name _____ Date _____ Score _____

Music notes are REPEATED when the notes remain on the *same level*.

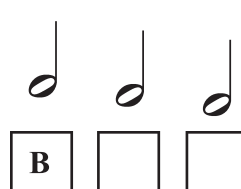
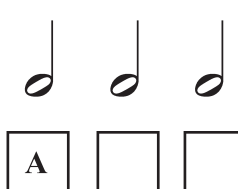
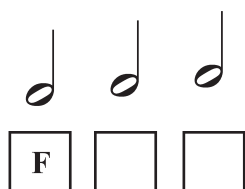
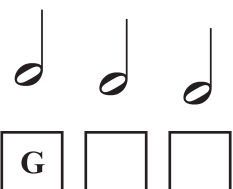
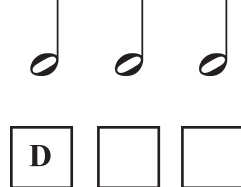
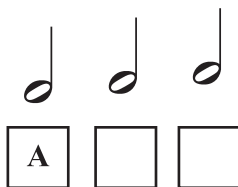
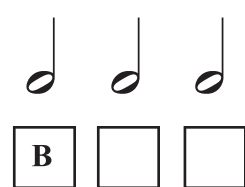
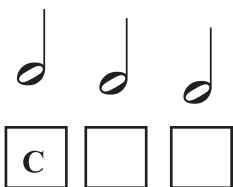
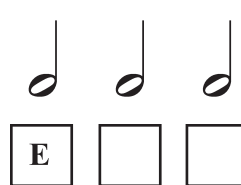
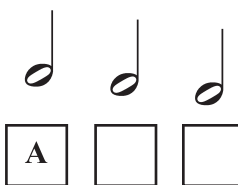
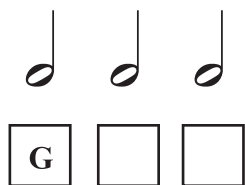
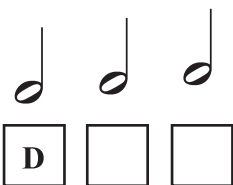
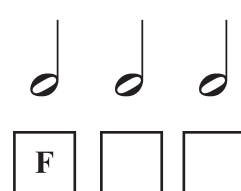
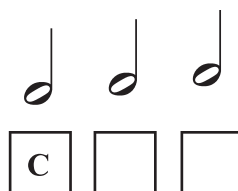
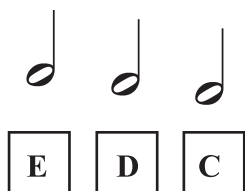


DIRECTIONS: Write letter names in the blank boxes. When the notes move UP, the letters that follow go *forward* in the alphabet. When the notes move DOWN, the letters that follow go *backward* in the alphabet. When the notes are on the SAME LEVEL, the letters are *repeated*.

Sample:



Sample:

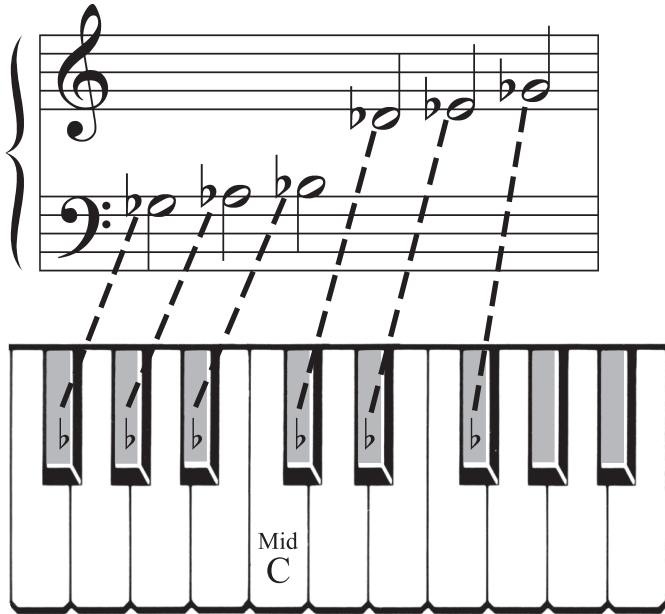


KEYBOARD ASSIGNMENT: Find and play all letters on your keyboard at home. Say the letter names aloud as you play. Do this three times each day.

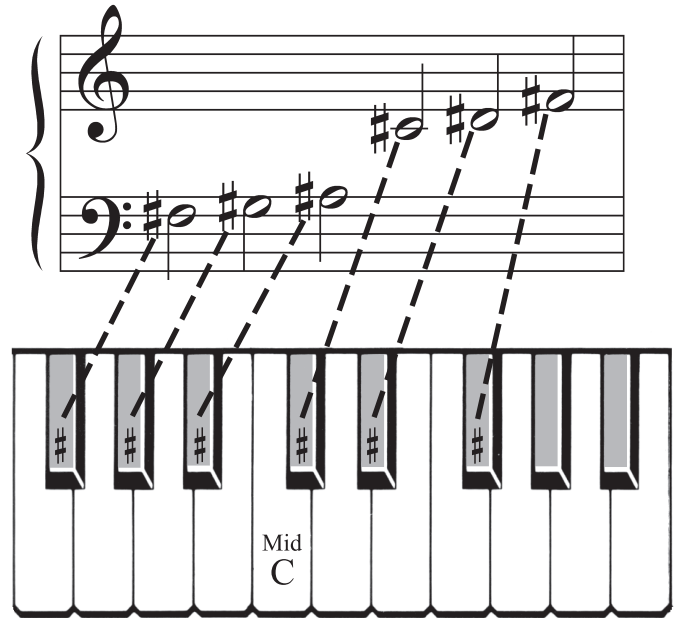
Lesson 25: Flats and Sharps

Name _____ Date _____ Score _____

The FLAT SIGN (♭) means go DOWN (left) to the nearest key. Black key flats are shown below.



The SHARP SIGN (♯) means go UP (right) to the nearest key. Black key sharps are shown below.

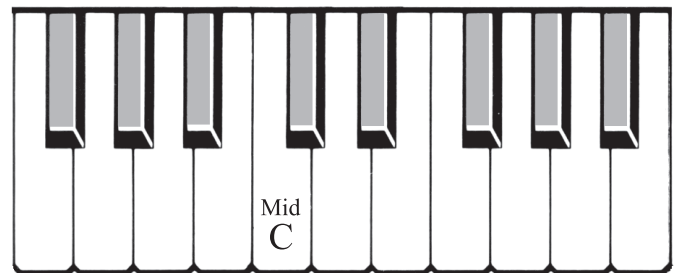
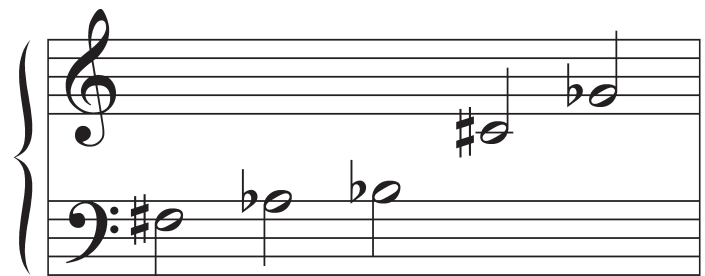
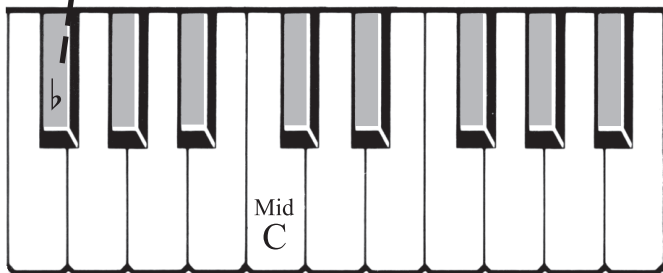


As you see, each black key has two names. For example, F♯ and G♭ are the same key.

DIRECTIONS: Draw a line from each note to the correct black key on the keyboard below. Draw the correct *sharp* or *flat* sign on the space inside the black key.



(Sample)



KEYBOARD ASSIGNMENT: After completing the written work, play all black key notes at the keyboard. As you play, say the letter name aloud with its correct sharp or flat. Do this three times each day.