

John W. Schaum

Arpeggio Speller

for Piano or Electronic Keyboard

Foreword

The Schaum Arpeggio Speller is a carefully designed workbook that provides the student with a comprehensive knowledge of all major and minor arpeggios. By writing out the notes for the individual arpeggios and also locating them on the keyboard diagrams the student acquires a thorough understanding of their construction. Special drills for writing the correct fingering are part of every lesson. The student is given keyboard assignments in playing the arpeggios in all their inversions in each hand. There are four quiz sections in the book which enable the student to double check him/herself.

Contents

Lesson	page	Lesson	page
1. C Major Arpeggio	4	15. A Minor Arpeggio.....	18
2. G Major Arpeggio	5	16. E Minor Arpeggio	19
3. D Major Arpeggio	6	17. B Minor Arpeggio	20
4. A Major Arpeggio	7	18. F# Minor Arpeggio	21
5. E Major Arpeggio.....	8	19. C# Minor Arpeggio.....	22
6. B Major Arpeggio.....	9	20. G# Minor Arpeggio	23
7. Arpeggio Quiz No. 1	10	21. Arpeggio Quiz No. 3.....	24
8. F Major Arpeggio	11	22. D Minor Arpeggio	25
9. Bb Major Arpeggio.....	12	23. G Minor Arpeggio.....	26
10. Eb Major Arpeggio.....	13	24. C Minor Arpeggio.....	27
11. Ab Major Arpeggio	14	25. F Minor Arpeggio	28
12. Db Major Arpeggio.....	15	26. Bb Minor Arpeggio.....	29
13. Gb Major Arpeggio.....	16	27. Eb Minor Arpeggio.....	30
14. Arpeggio Quiz No. 2.....	17	28. Arpeggio Quiz No. 4.....	31

Schaum Publications, Inc. • 10235 N. Port Washington Rd. • Mequon, WI 53092
www.schaumpiano.net

© Copyright 1965 by Schaum Publications, Inc., Mequon, Wisconsin
 International Copyright Secured • All Rights Reserved • Printed in U.S.A.

ISBN-13: 978-1-62906-078-1

Warning: The reproduction of any part of this publication without prior written consent of Schaum Publications, Inc. is prohibited by U.S. Copyright Law and subject to penalty. This prohibition includes all forms of printed media (including any method of photocopy), all forms of electronic media (including computer images), all forms of film media (including filmstrips, transparencies, slides and movies), all forms of sound recordings (including cassette tapes and compact disks), and all forms of video media (including video tapes and DVD).

Lesson 1. C Major Arpeggio

Pupil's Name.....

Completion Date.....

Assignment Date.....

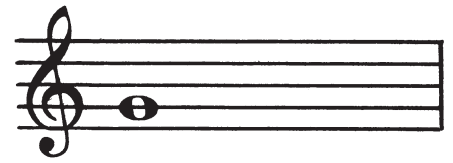
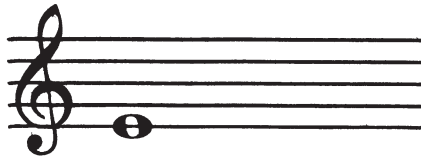
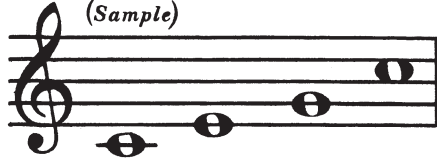
Grade or Star.....

DIRECTIONS: On the staves below, write whole notes for the root position and inversions of the C major arpeggio. See chart at bottom of page. The sample is already marked as it should be.

Root Position

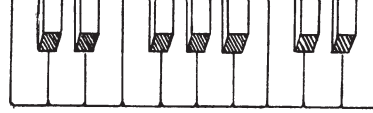
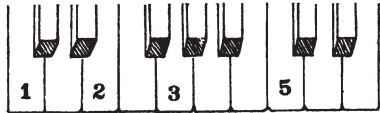
First Inversion

Second Inversion



C E G C

(Write letter names on dotted lines)

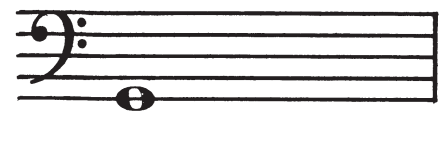


(Write R.H. finger numbers on keyboard diagrams. See chart below.)

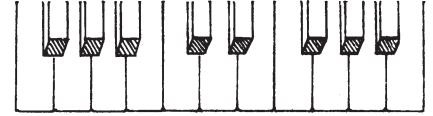
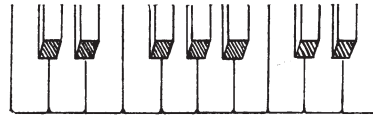
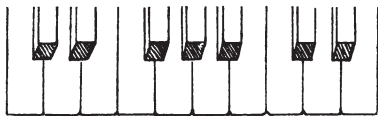
Root Position

First Inversion

Second Inversion



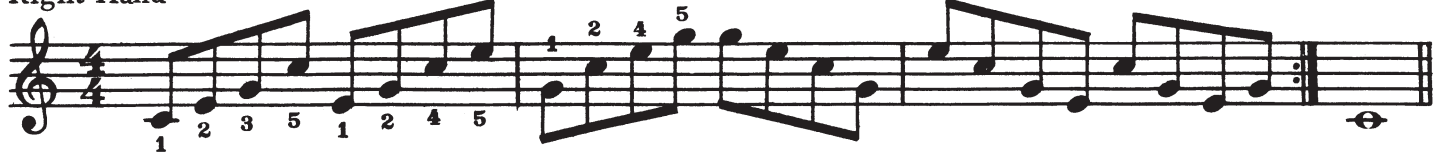
(Write letter names on dotted lines)



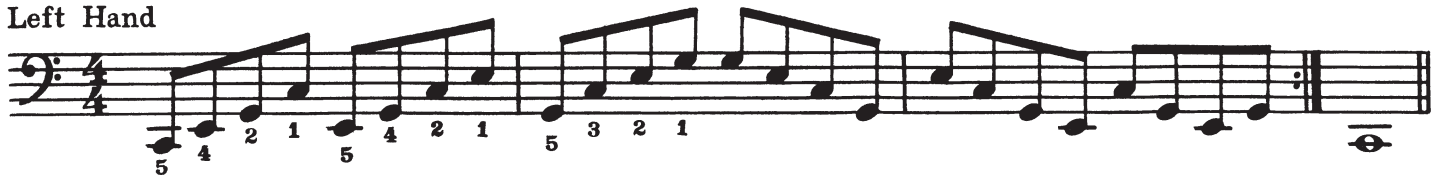
(Write L.H. finger numbers on keyboard diagrams. See chart below.)

KEYBOARD ASSIGNMENT

Right Hand



Left Hand



FINGERING AND INVERSION CHART

Left Hand



Root Position First Inversion Second Inversion

Right Hand



Root Position First Inversion Second Inversion

Lesson 17. B Minor Arpeggio

Pupil's Name.....

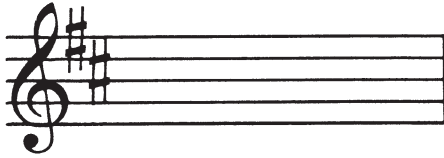
Completion Date.....

Assignment Date.....

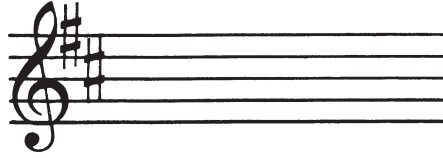
Grade or Star.....

DIRECTIONS: On the staves below, write whole notes for the root position and inversions of the B minor arpeggio. See chart at bottom of page.

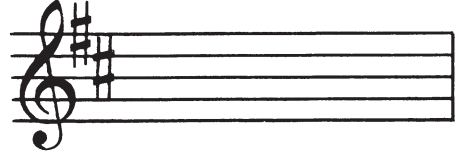
Root Position



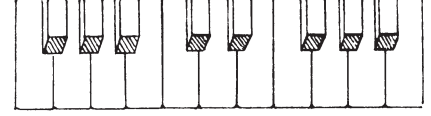
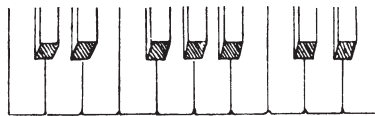
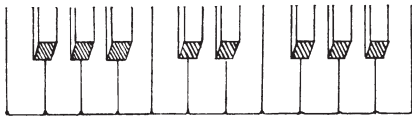
First Inversion



Second Inversion

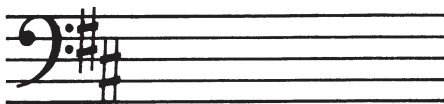


(Write letter names.)

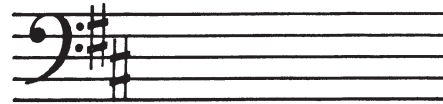


(Write R.H. finger numbers. See chart below.)

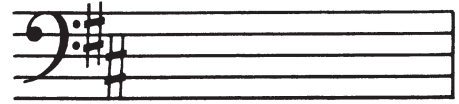
Root Position



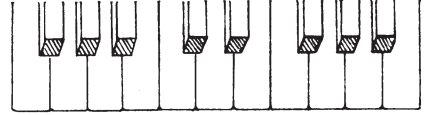
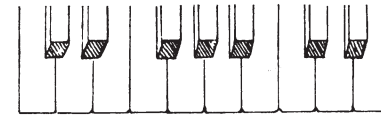
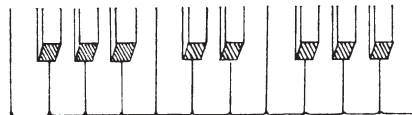
First Inversion



Second Inversion



(Write letter names.)



(Write L.H. finger numbers. See chart below.)

KEYBOARD ASSIGNMENT

Right Hand



Left Hand



FINGERING AND INVERSION CHART

Left Hand



Root Position First Inversion Second Inversion

Right Hand



Root Position First Inversion Second Inversion