

## Down in Demerara

*Moochin' about*

Musical notation for the piece "Down in Demerara". It consists of four staves of music in 4/4 time, with a key signature of one sharp (F#). The melody is written in treble clef. The first staff starts with a measure rest followed by a quarter note G4 with a 'V' above it. The second staff has a measure rest at the beginning, followed by a quarter note G4 with a 'V' above it, and another quarter note G4 with a 'V' above it. The piece concludes with a double bar line at the end of the fourth staff.

## Li'l Liza Jane

*Happily*

Musical notation for the piece "Li'l Liza Jane". It consists of three staves of music in 2/4 time, with a key signature of one sharp (F#). The melody is written in treble clef. The first staff begins with a measure rest, followed by quarter notes G4, A4, B4, and C5. The second staff has a measure rest at the beginning, followed by quarter notes G4, A4, B4, and C5, and then a quarter note G4 with a 'V' above it. The piece concludes with a double bar line at the end of the third staff.

## The old grey goose

*Spreading the news!*

Musical notation for the piece "The old grey goose". It consists of three staves of music in 2/4 time, with a key signature of one sharp (F#). The melody is written in treble clef. The first staff begins with a measure rest, followed by quarter notes G4, A4, B4, and C5, and then quarter notes G4, A4, B4, and C5. The second staff has a measure rest at the beginning, followed by quarter notes G4, A4, B4, and C5, and then quarter notes G4, A4, B4, and C5. The piece concludes with a double bar line at the end of the third staff.

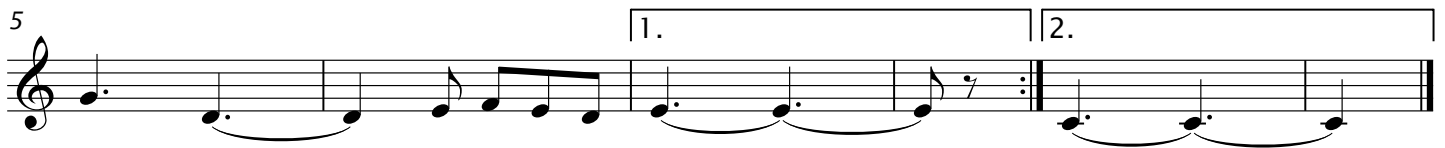
## Clementine

*With strong feeling*



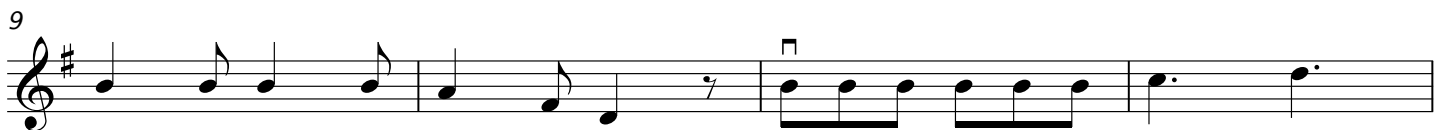
## On top of Old Smokey

*Lazily*



## I'se the b'y that builds the boat

*Brightly*



## Arkansas traveller

*Just fast enough ...*

Colonel Sandford C. Faulkner

Musical score for 'Arkansas traveller' in G major, 4/4 time. The score consists of four staves of music. The first staff begins with a 'V' marking above the first measure. The melody is characterized by a steady eighth-note pattern with occasional quarter notes and rests. The key signature has one sharp (F#), and the time signature is 4/4.

## Shenandoah

*Smoothly flowing*

Musical score for 'Shenandoah' in G major, 4/4 time. The score consists of two staves of music. The first staff begins with a 'V' marking above the first measure. The melody is characterized by a steady eighth-note pattern with occasional quarter notes and rests. The key signature has one sharp (F#), and the time signature is 4/4.

## Mexican hat dance

*Very rhythmic*

Musical score for 'Mexican hat dance' in G minor, 6/8 time. The score consists of four staves of music. The first staff begins with a 'V' marking above the first measure. The melody is characterized by a steady eighth-note pattern with occasional quarter notes and rests. The key signature has two flats (Bb and Eb), and the time signature is 6/8. The score includes first and second endings marked with '1.' and '2.'.