

MORANGOS PARA LAURA

BOSSA

LUPA SANTIAGO

♩ = 56 INTRO
Cmi7

Musical staff for the intro, measures 1-4, consisting of rhythmic slashes.

A

Musical staff for section A, measures 5-8, with notes and triplets.

Musical staff for section A, measures 9-12, with notes and triplets.

Musical staff for section A, measures 13-16, with notes and triplets.

Musical staff for SOLOS section, measures 17-20, consisting of rhythmic slashes.

Musical staff for section A, measures 21-24, consisting of rhythmic slashes.

Musical staff for section A, measures 25-28, with notes and triplets.

AFTER SOLOS, D.S. AL FINE

MORANGOS PARA LAURA

LUPA SANTIAGO

Bb

BOSSA

INTRO

♩ = 56 Dmi7

A

AFTER SOLOS, D.S. AL FINE

MORANGOS PARA LAURA

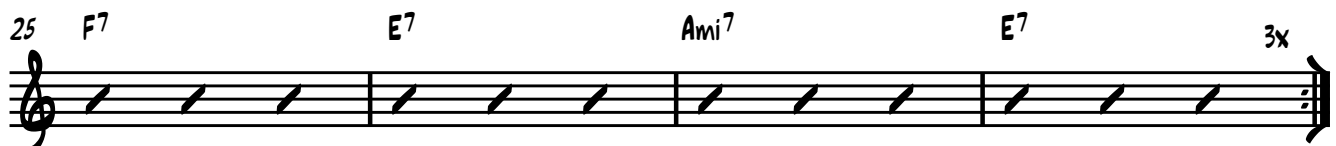
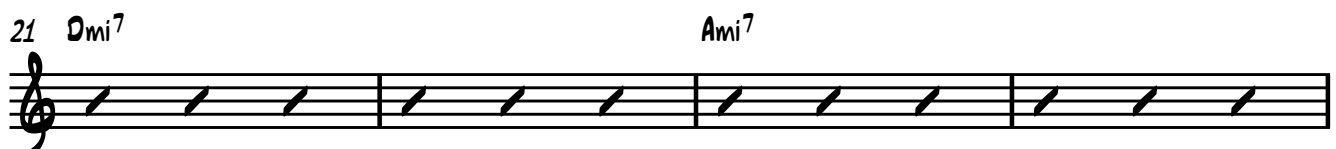
LUPA SANTIAGO

E_b

BOSSA INTRO
♩ = 56
Ami⁷



A



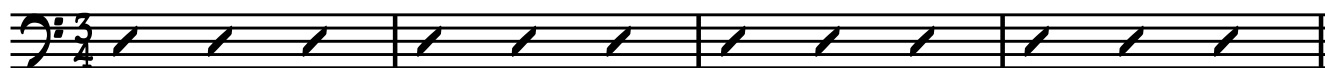
AFTER SOLOS. D.S. AL FINE

MORANGOS PARA LAURA

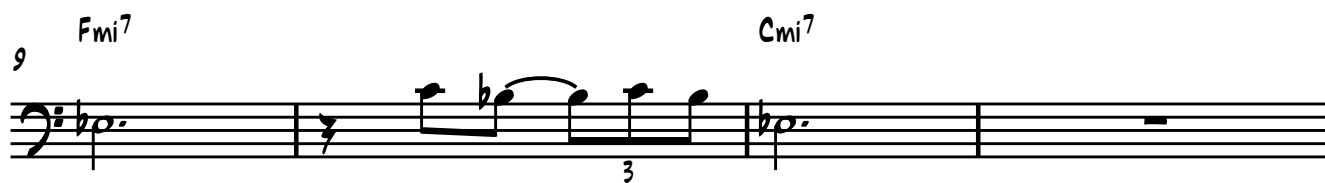
BOSSA

LUPA SANTIAGO

♩ = 56 INTRO
Cmi⁷



A Cmi⁷



AFTER SOLOS. D.S. AL FINE