

Basie's Blues

(Track 1/18)

Jim Snidero

Chorus 1

♩ = 108

5

C7 F7 C7

mp

9

F7 C7 A7

13

D- G7 C7 A7alt. D- G7alt.

Chorus 2

17

C7 F7 C7

mp

21

F7 C7 A7

25

D- G7 C7 G7sus

mp *f*

Chorus 3

29

C7 F7 F#o C7

mp *f*

Morning Calm

(Track 2/19)

Jim Snidero

Chorus 1

$\text{♩} = 110$

D-6 B \flat Δ A7alt. D-6 B \flat Δ A7alt.

5 D-6 B \flat Δ A7alt. E $^{\circ}$ A7alt.

9 D-6 B \flat Δ A7alt. D-6 B \flat Δ A7

13 D-6 B \flat Δ A7alt. D-6 G-7 C7

17 E7 $\#9$ F7 $\#9$ E7 $\#9$ A \flat /A

21 G-6 A \flat° E $^{\circ}$ A7alt.

25 D-6 B \flat Δ A7alt. D-6 B \flat Δ A7alt.

29 D-6 B \flat Δ A7alt. D-6 E $^{\circ}$ A7alt.

So Long Birdie

(Track 3/20)

Jim Snidero

Chorus 1 ♩ = 118

1 G⁶ A⁻ D⁷ G^Δ E⁷ A⁻ D⁷

5 G^Δ B⁻ E⁷ A⁻ B⁻ E⁷

9 A⁻⁷ A⁻/G[#] A⁻/G A⁻/F[#]

13 A⁻ D⁷ G^Δ

17 G⁷ F^{#7} alt. F⁷ E⁷

21 A⁻ C⁻ F⁷ A⁻ D⁷ alt.

25 G^Δ A⁻ D⁷ G^Δ B⁻ E⁷

29 A⁻ D⁷ b⁹ G^Δ E⁷ alt. A⁻⁷ D⁷ 13

Hot and Humid

(Track 4/21)

Jim Snidero

Chorus 1

$\text{♩} = 126$

E-6

F# \emptyset

B7 alt.

E-6

B \emptyset

E7 alt.

5

9

13

Chorus 2

17

21

25

29

Rock On

(Track 5/22)

Rock ♩ = 130

Jim Snidero

Intro

D7

Chorus 1 or 2

1

D7

5

G7

D7

9

Bb

A7

Bb7

A7

13

Bb7

A7

D7

17

1.

2.

Chorus 3

19

D7

Important Events

(Track 6/23)

Jim Snidero

Chorus 1 ♩ = 165

A-7

5

GΔ

9

A-7

13

GΔ

17

B-♭6

21

25

Shufflin' in F

(Track 7/24)

Jim Snidero

Chorus 1

♩ = 150

5

9

Chorus 2

13

17

21

Chorus 3

25

Bossa at Night

(Track 8/25)

Bossa Nova ♩ = 124

Jim Snidero

Chorus 1

B-7 B \flat $^{\circ}$

5 A-7 D7 G $^{\circ}$ G Δ

9 G- C7 F#-7 B7

13 E- A7 F#- B7 F#7

17 B-9 B \flat $^{\circ}$

21 A-7 D7#11 G $^{\circ}$ G Δ

Duke's Convoy

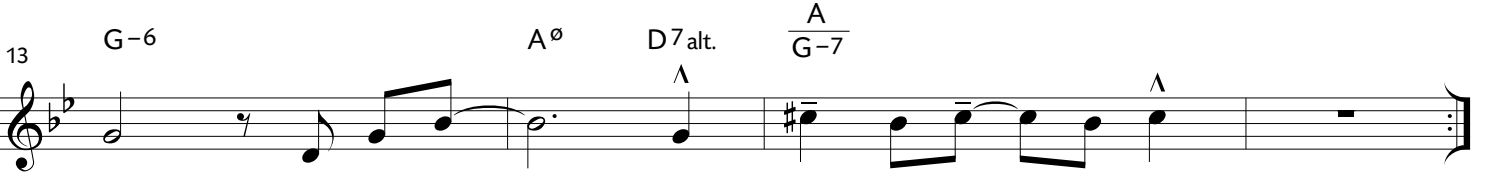
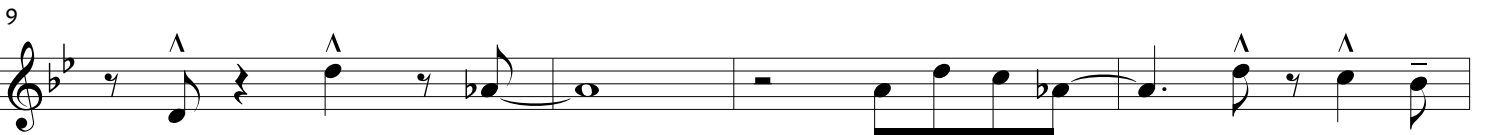
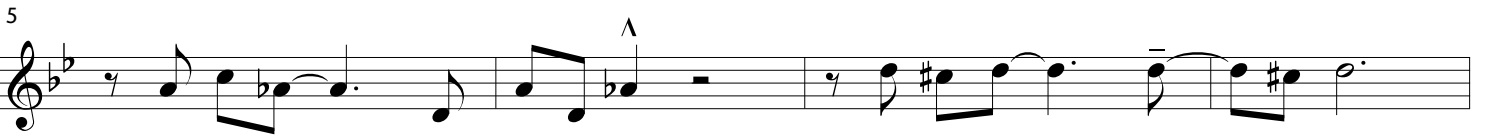
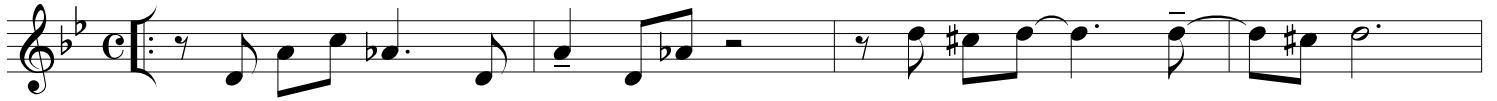
(Track 9/26)

Latin $\text{♩} = 82$

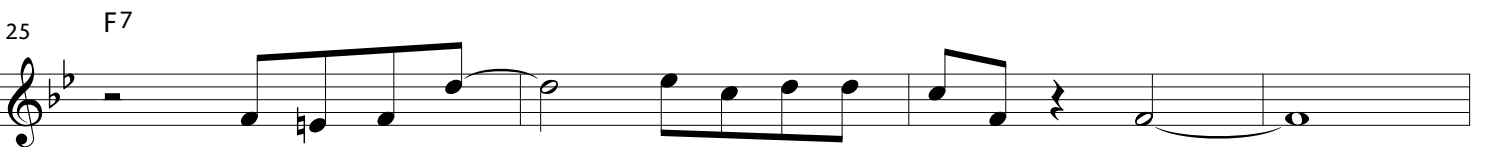
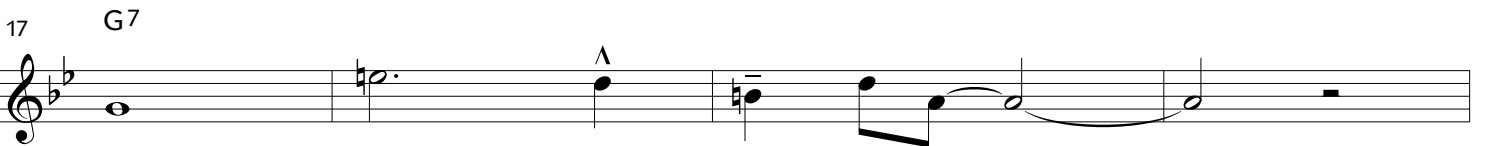
Jim Snidero

Chorus 1

$D13^{\flat 9\#11}$



Swing



Mist and Grits

(Track 10/27)

Jim Snidero

Intro $\text{♩} = 114$

A7alt. D7alt. G-7 F#Δ#11 FΔ C7b9

Chorus 1

1 FΔ C-7 F7 BbΔ Bb-7 Eb7#11

5 A-7 D7 G-7 C7 BbΔ A- G- C7b9

9 FΔ C- F7 BbΔ Bb-7 Eb7#11

13 A-7 D7 Ab7 G7 F#Δ FΔ

17 C-7 F7 BbΔ

21 B-7 E7 A- D7 G-7 C7

25 FΔ C-7 F7 BbΔ Bb-7 Eb7#11

29 A-7 D7 Ab7 G7 F#Δ#11

Caliente Blues

(Track 11/28)

Swing $\text{♩} = 85$

Jim Snidero

Intro

Csus Fsus Gsus Csus Asus

Chorus 1 $\text{♩} = 2$ Latin

1 C7

7 F7

13 C7 G7

19 F7 C7 Fsus Gsus Csus Asus

25 Csus Fsus 1. Gsus Csus Asus 2. Gsus Csus Asus

Chorus 3 Swing

29 C7

35 F7

41 C7 G7

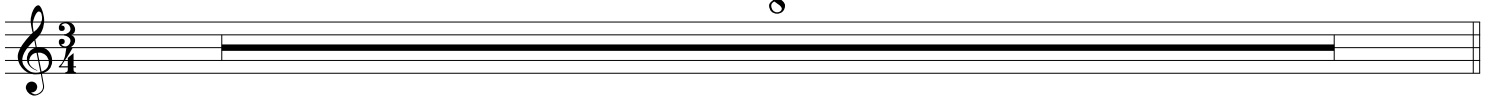
Prince Charming

(Track 12/29)

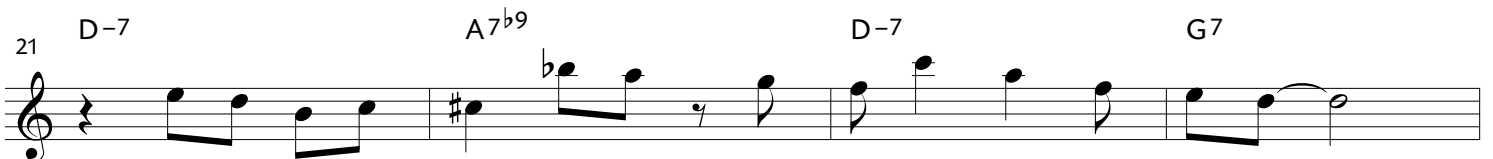
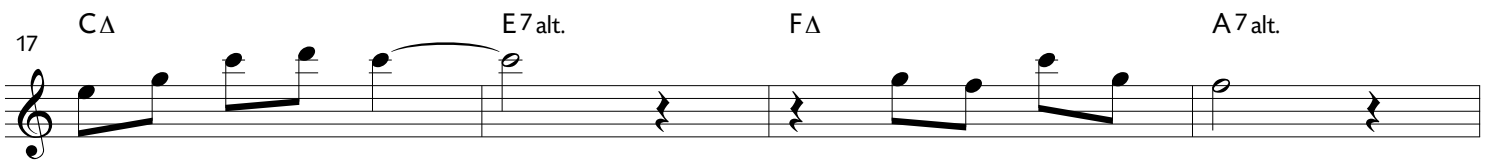
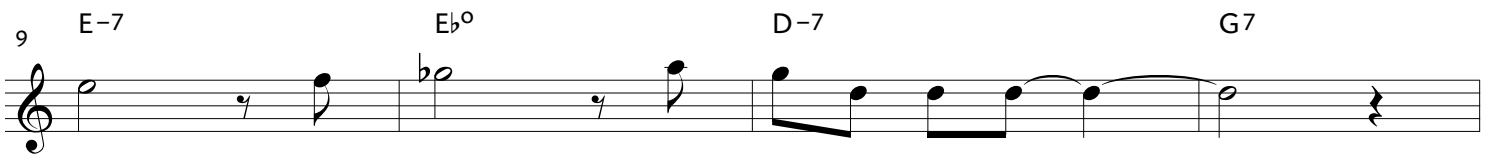
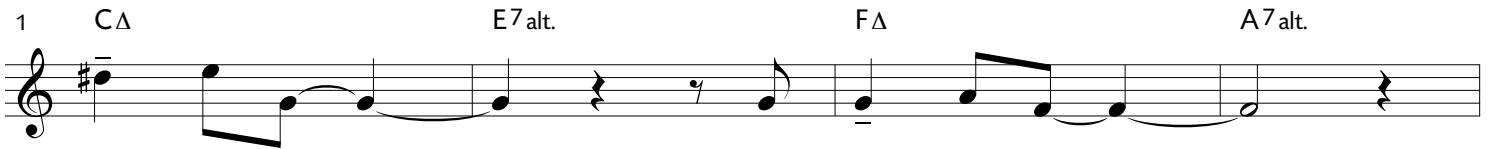
Jim Snidero

Intro ♩ = 131

8



Chorus 1



Bird's Backyard

(Track 13/30)

Jim Snidero

Chorus 1 $\text{♩} = 84$

The musical score for "Bird's Backyard" Chorus 1 is written in treble clef with a key signature of one sharp (F#) and a common time signature (C). The tempo is marked as quarter note = 84. The score consists of eight measures, each with a guitar chord indicated above the staff. The melodic line is written in eighth and quarter notes, with some measures containing rests. The chords are: DΔ, G-7, C7, DΔ, F#-7, B7, E-7, A7, F#-7, F7, BbΔ, A7alt., DΔ, G-7, C7, F#-7, B7, E-7, A7, EbΔ, DΔ, C#7, F#-6, G#° (with a ^ above), C#7b9 (with a ^ above), F#-6 (with a ^ above), B7, E-6, F#° (with a ^ above), B7b9 (with a ^ above), E-7 (with a ^ above), A7, DΔ, G-7, C7, DΔ, F#- (with a ^ above), B7, E-7, A sus, and D6.

1 DΔ G-7 C7 DΔ F#-7 B7

5 E-7 A7 F#-7 F7 BbΔ A7alt.

9 DΔ G-7 C7 F#-7 B7

13 E-7 A7 EbΔ DΔ C#7

17 F#-6 G#° C#7b9 F#-6 B7

21 E-6 F#° B7b9 E-7 A7

25 DΔ G-7 C7 DΔ F#- B7

29 E-7 A sus D6

Us

(Track 14/31)

Jim Snidero

Chorus 1 ♩ = 126

F Δ G- A- B \flat Δ A7alt. D7alt. G- B \flat Δ A7alt. D-

4 G- C7 C-7 F7 B \flat Δ B $^{\circ}$

7 1. A-7 D7 G-7 C7 2. G- C7alt. F $^{\circ}$

9 E \flat /F D/F B \flat Δ /F E \flat 7#11 E7#11 E \flat 7#11

13 F Δ A-7 D7 \flat 9 G7#11 C7alt.

17 F Δ G- A- B \flat Δ A7alt. D7alt. G- B \flat Δ A7alt. D- G- C7

21 C-7 F7 B \flat Δ E \flat 7 G- C7 F $^{\circ}$ F Δ

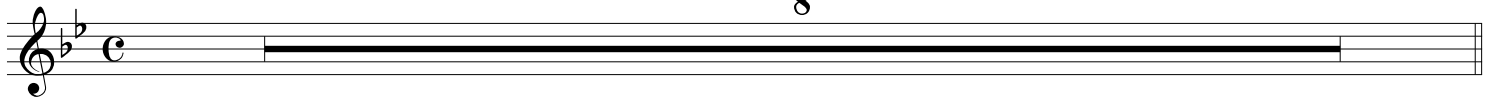
Love is Easy

(Track 15/32)

Intro $\text{♩} = 90$

Jim Snidero

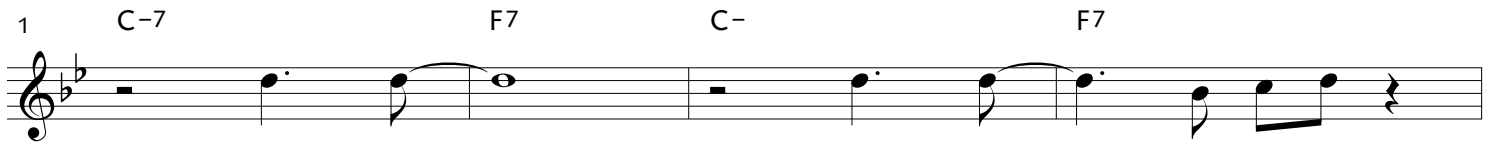
8



Musical staff for the Intro, showing a whole rest for 8 measures.

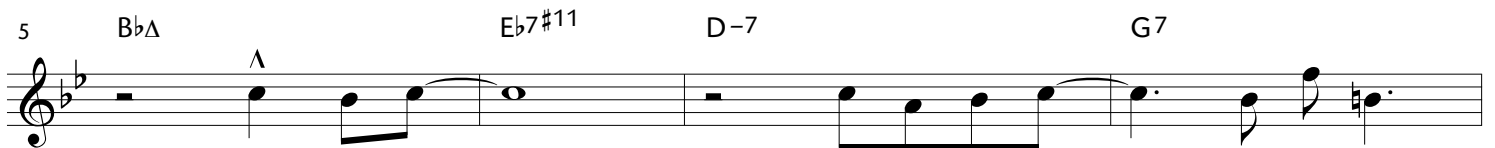
Chorus 1

1 C-7 F7 C- F7



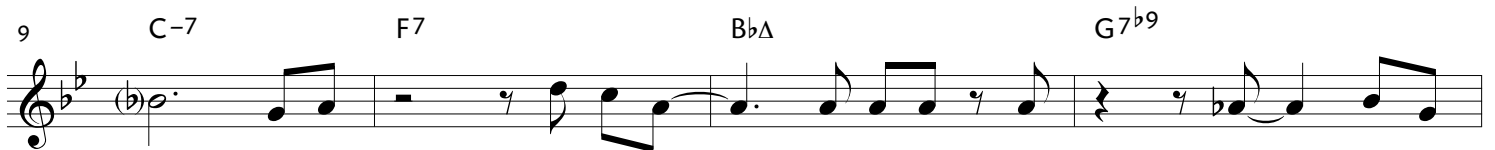
Musical staff for measures 1-4 of Chorus 1. Chords: C-7, F7, C-, F7.

5 BbΔ Eb7#11 D-7 G7



Musical staff for measures 5-8 of Chorus 1. Chords: BbΔ, Eb7#11, D-7, G7.

9 C-7 F7 BbΔ G7b9



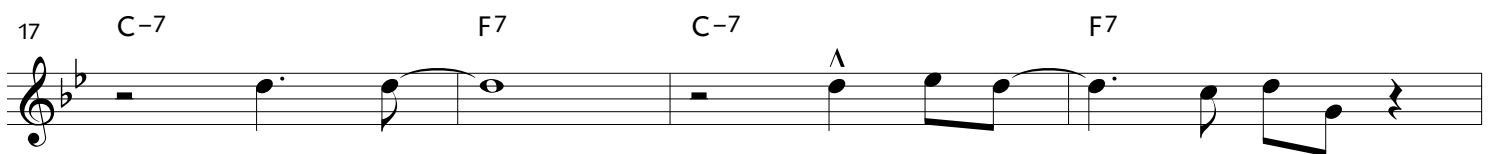
Musical staff for measures 9-12 of Chorus 1. Chords: C-7, F7, BbΔ, G7b9.

13 C-7 F7 BbΔ D- C- BbΔ A- Ab7 G7alt.



Musical staff for measures 13-16 of Chorus 1. Chords: C-7, F7, BbΔ, D-, C-, BbΔ, A-, Ab7, G7alt.

17 C-7 F7 C-7 F7



Musical staff for measures 17-20 of Chorus 1. Chords: C-7, F7, C-7, F7.

21 BbΔ Eb7#11 D-7 G7alt.



Musical staff for measures 21-24 of Chorus 1. Chords: BbΔ, Eb7#11, D-7, G7alt.

25 C-7 Eb-7 Ab7 D- G7alt.



Musical staff for measures 25-28 of Chorus 1. Chords: C-7, Eb-7, Ab7, D-, G7alt.

29 C-7/F F7 BbΔ



Musical staff for measures 29-32 of Chorus 1. Chords: C-7/F, F7, BbΔ.