

# Basie's Blues

(Track 1/18)

Jim Snidero

Chorus 1  $\text{♩} = 108$

1 **Bb7** **Eb7** **Bb7**

*mp*

5 **Eb7** **Bb7** **G7**

9 **C-** **F7** **Bb7** **G7 alt.** **C-** **F7 alt.**

Chorus 2

13 **Bb7** **Eb7** **Bb7**

*mp*

17 **Eb7** **Bb7** **G7**

21 **C-** **F7** **Bb7** **F7 sus**

*f*

Chorus 3

25 **Bb7** **Eb7** **E°** **Bb7**

*mp* *f*

1 1 4 5 5

# Morning Calm

(Track 2/19)

Jim Snidero

## Chorus 1

♩ = 110

Chorus 1

1 C-6 AbΔ G7alt. C-6 AbΔ G7alt.

5 C-6 AbΔ G7alt. D<sup>∅</sup> G7alt.

9 C-6 AbΔ G7alt. C-6 AbΔ G7

13 C-6 AbΔ G7alt. C-6 F-7 Bb7

17 D7#9 Eb7#9 D7#9 Gb/G

21 F-6 Gb<sup>∅</sup> D<sup>∅</sup> G7alt.

25 C-6 AbΔ G7alt. C-6 AbΔ G7alt.

29 C-6 AbΔ G7alt. C-6 D<sup>∅</sup> G7alt.

# So Long Birdie

(Track 3/20)

Jim Snidero

Chorus 1 ♩ = 118

F6 G- C7 FΔ D7 G- C7  
 5 FΔ A- D7 G- A- D7  
 9 G-7 G-/F# G-/F G-/E  
 13 G- C7 FΔ  
 17 F7 E7alt. Eb7 D7  
 21 G- Bb- Eb7 G- C7alt.  
 25 FΔ G- C- FΔ A- D7  
 29 G- C7b9 FΔ D7alt. G-7 C713

The image shows the bass line for the chorus of 'So Long Birdie'. It consists of eight staves of music in 4/4 time, with a tempo of 118 beats per minute. The key signature has one flat (Bb). The notation includes various chords and melodic lines with accents and slurs. The chords are: F6, G-, C7, FΔ, D7, G-, C7, FΔ, A-, D7, G-, A-, D7, G-7, G-/F#, G-/F, G-/E, G-, C7, FΔ, F7, E7alt., Eb7, D7, G-, Bb-, Eb7, G-, C7alt., FΔ, G-, C-, FΔ, A-, D7, G-, C7b9, FΔ, D7alt., G-7, C713.

# Hot and Humid

(Track 4/21)

Jim Snidero

## Chorus 1

♩ = 126

D-6 E<sup>∅</sup> A7alt. D-6 A<sup>∅</sup> D7alt.

5 G-6 E<sup>∅</sup> A7alt.

9 D-6 E<sup>∅</sup> A7alt. D- G- C7

13 FΔ E<sup>∅</sup> A7alt. D-6 E<sup>∅</sup> A7alt.

## Chorus 2

17 D-6 E<sup>∅</sup> A7alt. D-6 A<sup>∅</sup> D7alt.

21 G-6 E<sup>∅</sup> A7alt.

25 D-6 E<sup>∅</sup> A7alt. D- G- C7

29 FΔ E<sup>∅</sup> A7alt. D-6 E<sup>∅</sup> A7alt.

# Rock On

(Track 5/22)

Rock ♩ = 130

Jim Snidero

Intro C7

Intro C7

Musical notation for the Intro, starting with a C7 chord. The bass line consists of a whole rest followed by a quarter rest, then a quarter note G2, a quarter note F2, a quarter note E2, and a quarter note D2.

Chorus 1 & 2

Chorus 1 & 2 C7

Musical notation for Chorus 1 & 2, starting with a C7 chord. The bass line consists of a whole rest followed by a quarter rest, then a quarter note G2, a quarter note F2, a quarter note E2, and a quarter note D2. This is followed by a quarter rest, a quarter note G2, a quarter note F2, a quarter note E2, and a quarter note D2. This is followed by a quarter rest, a quarter note G2, a quarter note F2, a quarter note E2, and a quarter note D2. This is followed by a quarter rest, a quarter note G2, a quarter note F2, a quarter note E2, and a quarter note D2.

Musical notation with fingering: 8va only 4 3 4 3 4 4 C7

Musical notation for the second part of Chorus 1 & 2, starting with an F7 chord. The bass line consists of a quarter note G2, a quarter note F2, a quarter note E2, and a quarter note D2. This is followed by a quarter rest, a quarter note G2, a quarter note F2, a quarter note E2, and a quarter note D2. This is followed by a quarter rest, a quarter note G2, a quarter note F2, a quarter note E2, and a quarter note D2. This is followed by a quarter rest, a quarter note G2, a quarter note F2, a quarter note E2, and a quarter note D2. This is followed by a quarter rest, a quarter note G2, a quarter note F2, a quarter note E2, and a quarter note D2.

Musical notation with fingering: 9 Ab G7 Ab7 G7

Musical notation for the third part of Chorus 1 & 2, starting with an Ab chord. The bass line consists of a quarter note G2, a quarter note F2, a quarter note E2, and a quarter note D2. This is followed by a quarter rest, a quarter note G2, a quarter note F2, a quarter note E2, and a quarter note D2. This is followed by a quarter rest, a quarter note G2, a quarter note F2, a quarter note E2, and a quarter note D2. This is followed by a quarter rest, a quarter note G2, a quarter note F2, a quarter note E2, and a quarter note D2. This is followed by a quarter rest, a quarter note G2, a quarter note F2, a quarter note E2, and a quarter note D2.

Musical notation with fingering: 13 Ab7 G7 C7

Musical notation for the fourth part of Chorus 1 & 2, starting with an Ab7 chord. The bass line consists of a quarter note G2, a quarter note F2, a quarter note E2, and a quarter note D2. This is followed by a quarter rest, a quarter note G2, a quarter note F2, a quarter note E2, and a quarter note D2. This is followed by a quarter rest, a quarter note G2, a quarter note F2, a quarter note E2, and a quarter note D2. This is followed by a quarter rest, a quarter note G2, a quarter note F2, a quarter note E2, and a quarter note D2. This is followed by a quarter rest, a quarter note G2, a quarter note F2, a quarter note E2, and a quarter note D2.

Musical notation with first and second endings: 17

Musical notation for the fifth part of Chorus 1 & 2, starting with a C7 chord. The bass line consists of a quarter note G2, a quarter note F2, a quarter note E2, and a quarter note D2. This is followed by a quarter rest, a quarter note G2, a quarter note F2, a quarter note E2, and a quarter note D2. This is followed by a quarter rest, a quarter note G2, a quarter note F2, a quarter note E2, and a quarter note D2. This is followed by a quarter rest, a quarter note G2, a quarter note F2, a quarter note E2, and a quarter note D2. This is followed by a quarter rest, a quarter note G2, a quarter note F2, a quarter note E2, and a quarter note D2.

Chorus 3

Chorus 3 C7

Musical notation for Chorus 3, starting with a C7 chord. The bass line consists of a whole rest followed by a quarter rest, then a quarter note G2, a quarter note F2, a quarter note E2, and a quarter note D2. This is followed by a quarter rest, a quarter note G2, a quarter note F2, a quarter note E2, and a quarter note D2. This is followed by a quarter rest, a quarter note G2, a quarter note F2, a quarter note E2, and a quarter note D2. This is followed by a quarter rest, a quarter note G2, a quarter note F2, a quarter note E2, and a quarter note D2.

# Important Events

(Track 6/23)

Jim Snidero

Chorus 1 ♩ = 165

G-7



5

FΔ



9

G-7



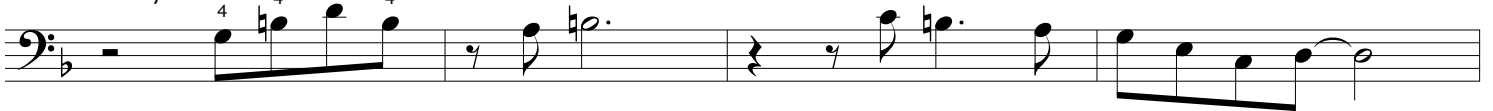
13

FΔ



17

A-7/D



21

(7)



25



# Shufflin' in F

(Track 7/24)

Jim Snidero

## Chorus 1

♩ = 150

F7 Bb7 F7

5 Bb7 F7

9 C7 Bb7 F7

## Chorus 2

13 F7 Bb7 F7

17 Bb7 F7

21 C7 Bb7 F7 C7

## Chorus 3

25 F7

# Bossa at Night

(Track 8/25)

Bossa Nova ♩ = 124

Jim Snidero

Chorus 1

A-7

A $\flat$ °

G-7

C7

F°

FΔ

9 F-

B $\flat$ 7

E-7

A7

13 D-

G7

E-

A7 E7

17 A-9

A $\flat$ °

G-7

C7#11

F°

FΔ



# Duke's Convoy

(Track 9/26)

Jim Snidero

Latin ♩ = 82

Chorus 1 C13<sup>b9#11</sup>

First staff of music, measures 1-4. Bass clef, key signature of three flats (B-flat, E-flat, A-flat), 4/4 time signature. The staff contains a series of eighth and quarter notes with fingerings 6, 4, 5, 5. There are accents and slurs over the notes.

Second staff of music, measures 5-8. Continuation of the first staff with similar rhythmic patterns and fingerings.

Third staff of music, measures 9-12. Continuation of the first staff with similar rhythmic patterns and fingerings.

Fourth staff of music, measures 13-16. Continuation of the first staff. Chord symbols above the staff: F-6, G<sup>o</sup>, C7 alt., G, F-7. The staff ends with a double bar line and repeat dots.

Fifth staff of music, measures 17-20. Chord symbol above the staff: Swing F7. The staff contains a series of notes with slurs and accents.

Sixth staff of music, measures 21-24. Chord symbol above the staff: B<sup>b</sup>7. The staff contains a series of notes with slurs and accents.

Seventh staff of music, measures 25-28. Chord symbol above the staff: E<sup>b</sup>7. The staff contains a series of notes with slurs and accents.

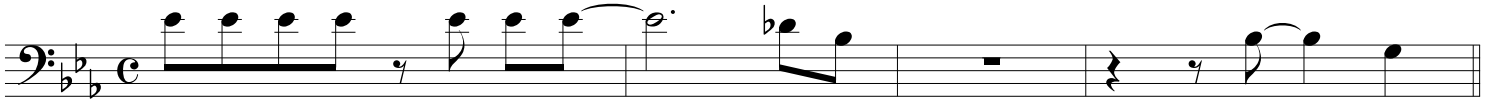
# Mist and Grits

(Track 10/27)

Jim Snidero

Intro  $\text{♩} = 114$

G7 alt. C7 alt. F-7 E $\Delta$ #11 Eb $\Delta$  Bb7b9



The intro consists of a single staff of music in bass clef with a key signature of two flats (Bb and Eb) and a common time signature. It begins with a series of eighth notes: G2, A2, Bb2, C3, D3, Eb3, F3, G3. This is followed by a quarter rest, then a quarter note G3, a quarter note A3, a quarter note Bb3, and a quarter note C4. The piece ends with a quarter rest.

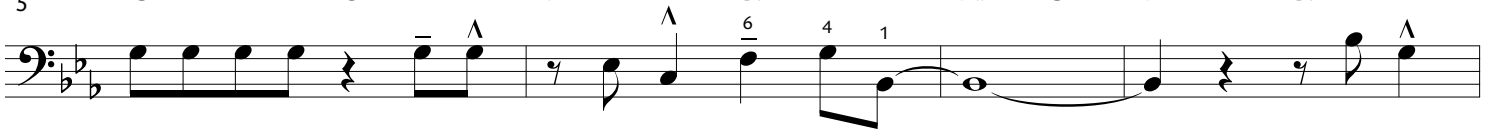
Chorus 1

1 Eb $\Delta$  Bb-7 Eb7 Ab $\Delta$  Ab-7 Db7#11



The first line of the chorus starts with a bass clef, two flats key signature, and common time. It begins with a quarter rest, followed by a quarter note G2, a quarter note A2, a quarter note Bb2, and a quarter note C3. This is followed by a quarter rest, then a quarter note Bb2, a quarter note C3, a quarter note D3, and a quarter note Eb3. The line ends with a quarter rest.

5 G-7 C7 F-7 6 Bb7 Ab $\Delta$  G- F- Bb7b9



The second line of the chorus continues from the first. It starts with a quarter rest, followed by a quarter note G2, a quarter note A2, a quarter note Bb2, and a quarter note C3. This is followed by a quarter rest, then a quarter note Bb2, a quarter note C3, a quarter note D3, and a quarter note Eb3. The line ends with a quarter rest.

9 Eb $\Delta$  Bb- Eb7 Ab $\Delta$  Ab-7 Db7#11



The third line of the chorus continues from the second. It starts with a quarter rest, followed by a quarter note G2, a quarter note A2, a quarter note Bb2, and a quarter note C3. This is followed by a quarter rest, then a quarter note Bb2, a quarter note C3, a quarter note D3, and a quarter note Eb3. The line ends with a quarter rest.

13 G-7 C7 F#7 F7 E $\Delta$  Eb $\Delta$




The fourth line of the chorus continues from the third. It starts with a quarter rest, followed by a quarter note G2, a quarter note A2, a quarter note Bb2, and a quarter note C3. This is followed by a quarter rest, then a quarter note Bb2, a quarter note C3, a quarter note D3, and a quarter note Eb3. The line ends with a quarter rest.

17 Bb-7 Eb7 Ab $\Delta$



The fifth line of the chorus continues from the fourth. It starts with a quarter rest, followed by a quarter note G2, a quarter note A2, a quarter note Bb2, and a quarter note C3. This is followed by a quarter rest, then a quarter note Bb2, a quarter note C3, a quarter note D3, and a quarter note Eb3. The line ends with a quarter rest.

21 A-7 D7 G- C7 F-7 Bb7



The sixth line of the chorus continues from the fifth. It starts with a quarter rest, followed by a quarter note G2, a quarter note A2, a quarter note Bb2, and a quarter note C3. This is followed by a quarter rest, then a quarter note Bb2, a quarter note C3, a quarter note D3, and a quarter note Eb3. The line ends with a quarter rest.

25 Eb $\Delta$  Bb-7 Eb7 Ab $\Delta$  Ab-7 Db7#11



The seventh line of the chorus continues from the sixth. It starts with a quarter rest, followed by a quarter note G2, a quarter note A2, a quarter note Bb2, and a quarter note C3. This is followed by a quarter rest, then a quarter note Bb2, a quarter note C3, a quarter note D3, and a quarter note Eb3. The line ends with a quarter rest.

29 G-7 C7 Gb7 F7 Eb $\Delta$ #11



The eighth line of the chorus continues from the seventh. It starts with a quarter rest, followed by a quarter note G2, a quarter note A2, a quarter note Bb2, and a quarter note C3. This is followed by a quarter rest, then a quarter note Bb2, a quarter note C3, a quarter note D3, and a quarter note Eb3. The line ends with a quarter rest.

# Caliente Blues

(Track 11/28)

Swing  $\text{♩} = 85$

Jim Snidero

Intro

B $\flat$ sus

E $\flat$ sus

Fsus

B $\flat$ sus

Gsus

Intro musical notation in bass clef, 4/4 time. It consists of five measures. The first measure has a B $\flat$  note with an accent (^) and a quarter rest. The second measure has a quarter rest. The third measure has a B $\flat$  note with an accent (^) and a quarter rest. The fourth measure has a B $\flat$  note with an accent (^) and a quarter rest. The fifth measure has a B $\flat$  note with an accent (^) and a quarter rest.

Chorus 1  $\text{♩} = 2$

Latin

Chorus 1 measures 1-6. Measure 1: B $\flat$ 7. Measure 2: B $\flat$ 7. Measure 3: B $\flat$ 7. Measure 4: B $\flat$ 7. Measure 5: B $\flat$ 7. Measure 6: B $\flat$ 7.

Chorus 1 measures 7-12. Measure 7: E $\flat$ 7. Measure 8: E $\flat$ 7. Measure 9: E $\flat$ 7. Measure 10: E $\flat$ 7. Measure 11: E $\flat$ 7. Measure 12: E $\flat$ 7.

Chorus 1 measures 13-18. Measure 13: B $\flat$ 7. Measure 14: B $\flat$ 7. Measure 15: B $\flat$ 7. Measure 16: F7. Measure 17: F7. Measure 18: F7.

Chorus 1 measures 19-24. Measure 19: E $\flat$ 7. Measure 20: E $\flat$ 7. Measure 21: B $\flat$ 7. Measure 22: B $\flat$ 7. Measure 23: E $\flat$ sus. Measure 24: Fsus.

Chorus 1 measures 25-30. Measure 25: B $\flat$ sus. Measure 26: E $\flat$ sus. Measure 27: 1. Fsus. Measure 28: B $\flat$ sus. Measure 29: Gsus. Measure 30: 2. Fsus.

Chorus 3 Swing

Chorus 3 measures 29-34. Measure 29: B $\flat$ 7. Measure 30: B $\flat$ 7. Measure 31: B $\flat$ 7. Measure 32: B $\flat$ 7. Measure 33: B $\flat$ 7. Measure 34: B $\flat$ 7.

Chorus 3 measures 35-40. Measure 35: E $\flat$ 7. Measure 36: E $\flat$ 7. Measure 37: E $\flat$ 7. Measure 38: E $\flat$ 7. Measure 39: E $\flat$ 7. Measure 40: E $\flat$ 7.

Chorus 3 measures 41-46. Measure 41: B $\flat$ 7. Measure 42: B $\flat$ 7. Measure 43: B $\flat$ 7. Measure 44: B $\flat$ 7. Measure 45: F7. Measure 46: F7.

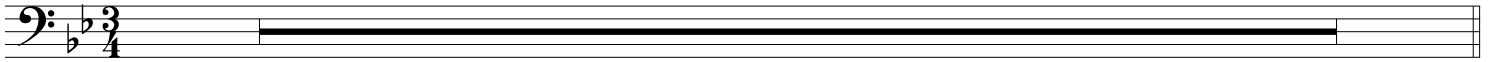
# Prince Charming

(Track 12/29)

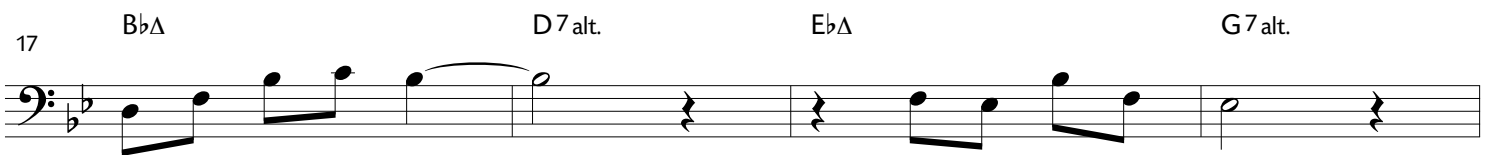
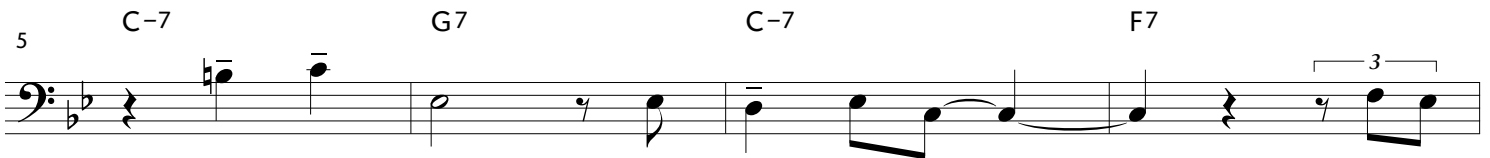
Jim Snidero

Intro  $\text{♩} = 131$

8



Chorus 1



# Bird's Backyard

(Track 13/30)

Jim Snidero

Chorus 1  $\text{♩} = 84$

4  $C\Delta$   $F-7$   $Bb7$   $C\Delta$   $E-7$   $A7$

5  $D-7$   $G7$   $E-7$   $Eb7$   $Ab\Delta$   $G7\text{alt.}$

9  $C\Delta$   $F-7$   $Bb7$   $E-7$   $A7$

13  $D-7$   $G7$   $Db\Delta$   $C\Delta$   $B7$

17  $E-6$   $F\#\circ$   $B7b9$   $E-6$   $A7$

21  $D-6$   $E\circ$   $A7b9$   $D-7$   $G7$

25  $C\Delta$   $F-7$   $Bb7$   $C\Delta$   $E-$   $A7$

29  $D-7$   $G\text{sus}$   $C6$

# Us

(Track 14/31)

Jim Snidero

Chorus 1 ♩=126

EbΔ F- G- AbΔ G7alt. C7alt. F- AbΔ G7alt. C-

4 F- Bb7 Bb-7 Eb7 AbΔ A°

7 1. G-7 C7 F-7 Bb7 2. F- Bb7alt. Eb°

9 Db/Eb C/Eb AbΔ/Eb Db7#11 D7#11 Db7#11

13 EbΔ G-7 C7b9 F7#11 Bb7alt.

17 EbΔ F- G- AbΔ G7alt. C7alt. F- AbΔ G7alt. C- F- Bb7

21 Bb-7 Eb7 AbΔ Db7 F- Bb7 Eb° EbΔ

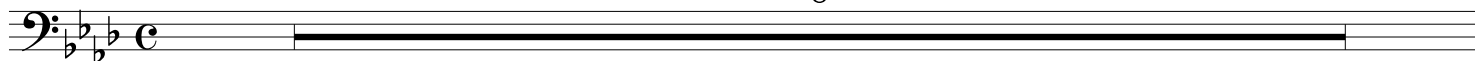
# Love is Easy

(Track 15/32)

Intro  $\text{♩} = 90$

Jim Snidero

8



## Chorus 1

