

Basie's Blues

(Track 1/18)

Jim Snidero

Chorus 1

♩ = 108

1 C7 F7 C7

5 F7 C7 A7

9 D- G7 C7 A7alt. D- G7alt.

Chorus 2

13 C7 F7 C7

17 F7 C7 A7

21 D- G7 C7 G7sus

Chorus 3

25 C7 F7 F#° C7

Morning Calm

(Track 2/19)

Jim Snidero

Chorus 1

♩ = 110

1 2 3 4 5 6 7 8 9 10 11 12 13 14 15 16 17 18 19 20

D-6 B \flat Δ A7alt. D-6 B \flat Δ A7alt.

D-6 B \flat Δ A7alt. E \emptyset A7alt.

D-6 B \flat Δ A7alt. D-6 B \flat Δ A7

D-6 B \flat Δ A7alt. D-6 G-7 C7

E7#9 F7#9 E7#9 A \flat /A

G-6 A \flat \emptyset E \emptyset A7alt.

D-6 B \flat Δ A7alt. D-6 B \flat Δ A7alt.

D-6 B \flat Δ A7alt. D-6 E \emptyset A7alt.

So Long Birdie

(Track 3/20)

Jim Snidero

Chorus 1 ♩ = 118

Musical score for the Chorus 1 of "So Long Birdie". The score is written in treble clef with a key signature of one sharp (F#) and a common time signature (C). The tempo is marked as ♩ = 118. The score consists of 32 measures, divided into eight systems of four measures each. The notes are primarily quarter and eighth notes, often beamed together. Chord symbols are placed above the staff, and accents (^) are placed above specific notes. The chord progression is as follows:

- Measures 1-4: G6, A-, D7, GΔ, E7, A-, D7
- Measures 5-8: GΔ, B-, E7, A-, B-, E7
- Measures 9-12: A-7, A-/G#, A-/G, A-/F#
- Measures 13-16: A-, D7, GΔ
- Measures 17-20: G7, F#7 alt., F7, E7
- Measures 21-24: A-, C-, F7, A-, D7 alt.
- Measures 25-28: GΔ, A-, D-, GΔ, B-, E7
- Measures 29-32: A-, D7b9, GΔ, E7 alt., A-7, D713

Hot and Humid

(Track 4/21)

Jim Snidero

Chorus 1

♩ = 126

E-6 F#° B7alt. E-6 B° E7alt.

5 A-6 F#° B7alt.

9 E-6 F#° B7alt. E- A- D7

13 GΔ F#° B7alt. E-6 F#° B7alt.

Chorus 2

17 E-6 F#° B7alt. E-6 B° E7alt.

21 A-6 F#° B7alt.

25 E-6 F#° B7alt. E- A- D7

29 GΔ F#° B7alt. E-6 F#° B7alt.

Rock On

(Track 5/22)

Rock ♩ = 130

Jim Snidero

Intro D7

Chorus 1 & 2

Chorus 3

Important Events

(Track 6/23)

Jim Snidero

Chorus 1 ♩ = 165

A-7

5

GΔ

9

A-7

13

GΔ

17

B-7/E

21

25

Shufflin' in F

(Track 7/24)

Jim Snidero

Chorus 1

♩ = 150

1 G7 C7 G7

5 C7 G7

9 D7 C7 G7

9 D7 C7 G7

Chorus 2

13 G7 C7 G7

17 C7 G7

21 D7 C7 G7 D7

21 D7 C7 G7 D7

Chorus 3

25 G7

25 G7

Bossa at Night

(Track 8/25)

Bossa Nova ♩ = 124

Jim Snidero

Chorus 1

B-7 B^b°

5 A-7 D7 G° GΔ

9 G- C7 F#-7 B7

13 E- A7 F#- B7 F#7

17 B-9 B^b°

21 A-7 D7#11 G° GΔ

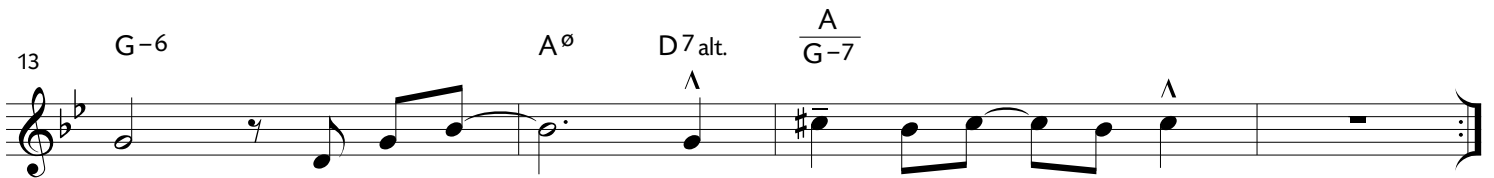
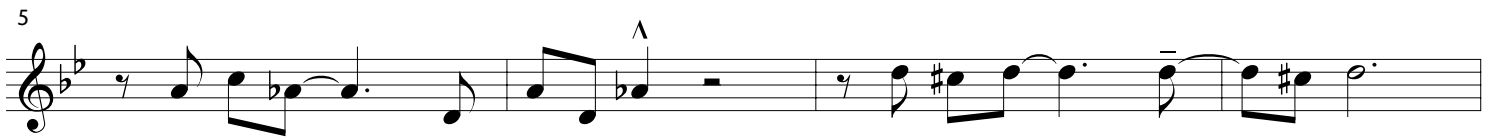
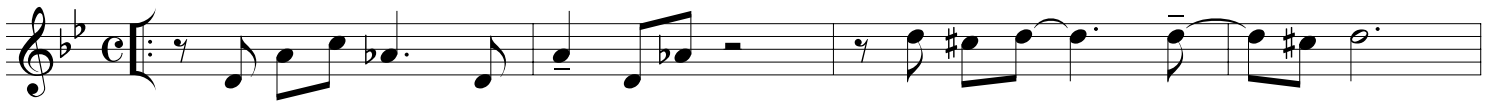
Duke's Convoy

(Track 9/26)

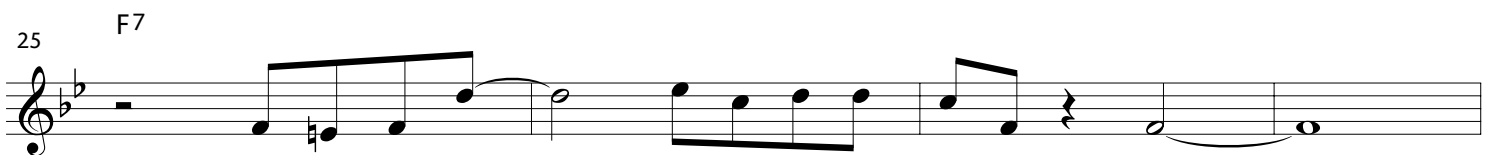
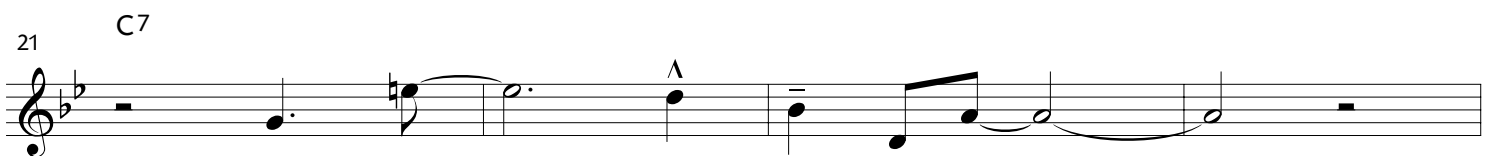
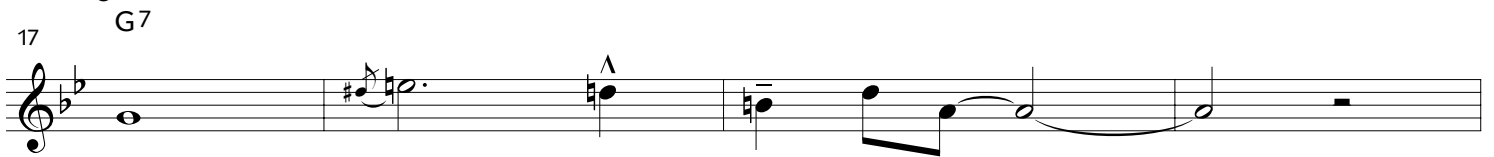
Jim Snidero

Latin $\text{♩} = 82$

Chorus 1 $D13^b9\#11$



Swing



Mist and Grits

(Track 10/27)

Jim Snidero

Intro $\text{♩} = 114$

A7 alt. D7 alt. G-7 F#Δ#11 FΔ C7b9

Chorus 1

1 FΔ C-7 F7 BbΔ Bb-7 Eb7#11

5 A-7 D7 G-7 C7 BbΔ A- G- C7b9

9 FΔ C- F7 BbΔ Bb-7 Eb7#11

13 A-7 D7 Ab7 G7 F#Δ FΔ

17 C-7 F7 BbΔ

21 B-7 E7 A- D7 G-7 C7

25 FΔ C-7 F7 BbΔ Bb-7 Eb7#11

29 A-7 D7 Ab7 G7 FΔ#11

Caliente Blues

(Track 11/28)

Jim Snidero

Swing $\text{♩} = 85$

Intro C_{sus} F_{sus} G_{sus} C_{sus} A_{sus}

Chorus 1 & 2 Latin

1 C₇

7 F₇

13 C₇ G₇

19 F₇ C₇ F_{sus} G_{sus} C_{sus} A_{sus}

25 C_{sus} F_{sus} 1. G_{sus} C_{sus} A_{sus} 2. G_{sus} C_{sus} A_{sus}

Chorus 3 Swing

29 C₇

35 F₇

41 C₇ G₇

Prince Charming

(Track 12/29)

Jim Snidero

Intro $\text{♩} = 131$

8

Chorus 1

1 C Δ E7 alt. F Δ A7 alt.

5 D-7 A7 D-7 G7

9 E-7 Eb° D-7 G

13 E-7 Eb° D-7 G7 alt.

17 C Δ E7 alt. F Δ A7 alt.

21 D-7 A7b9 D-7 G7

25 G- C7 F Δ F#°

Bird's Backyard

(Track 13/30)

Jim Snidero

Chorus 1 $\text{♩} = 84$

The musical score for "Bird's Backyard" Chorus 1 is written in treble clef with a key signature of one sharp (F#) and a common time signature (C). The tempo is marked as quarter note = 84. The score consists of eight lines of music, each with a measure number and a set of guitar chords. The chords are: DΔ, G-7, C7, DΔ, F#-7, B7 (measures 1-4); E-7, A7, F#-7, F7, BbΔ, A7alt. (measures 5-8); DΔ, G-7, C7, F#-7, B7 (measures 9-12); E-7, A7, EbΔ, DΔ, C#7 (measures 13-16); F#-6, G#° (chord), C#7b9, F#-6, B7 (measures 17-20); E-6, F#° (chord), B7b9, E-7, A7 (measures 21-24); DΔ, G-7, C7, DΔ, F#-, B7 (measures 25-28); E-7, Asus, D6 (measures 29-32).

Us

(Track 14/31)

Jim Snidero

Chorus 1 $\text{♩} = 126$

F Δ G- A- B $\flat\Delta$ A7alt. D7alt. G- B $\flat\Delta$ A7alt. D-

4 G- C7 C-7 F7 B $\flat\Delta$ B $^\circ$

7 1. A-7 D7 G-7 C7 2. G- C7alt. F $^\circ$

9 E \flat /F D/F B $\flat\Delta$ /F E \flat 7#11 E7#11 E \flat 7#11

13 F Δ A-7 D7 \flat 9 G7#11 C7alt.

17 F Δ G- A- B $\flat\Delta$ A7alt. D7alt. G- B $\flat\Delta$ A7alt. D- G- C7

21 C-7 F7 B $\flat\Delta$ E \flat 7 G- C7 F $^\circ$ F Δ

