

RHYTHMIC DISPLACEMENT EXERCISES

Displacing a quarter note by four beats (between notes) as you play up the scale:



“Diminution” of the above by halved note and rest values.



Displacement of two eighth notes by an eighth rest playing up and down dominant seventh chords.



Below, I’ve lined up four of the illustrated rhythms found in this book. Notice that the last note of each rhythm is played on the upbeat of 2.

- 1.
- 2.
- 3.
- 4.

If you can play/hear in your head the first rhythm, then the other three rhythms should be easier to play because you’ll know where to “place” (attack) the note that comes on the upbeat of 2. Using any note(s) to play the rhythms, try this simple exercise. Have another person play the first rhythm over and over. After a few bars rest, join in by repeating the second rhythm four or more times. Next, move on to the third rhythm, repeating it four or more times; and then on to the fourth rhythm in the same way. Now, by yourself, try playing the following 2-bar phrases, using any note(s):

- or
- or
- or

Finally, try isolating illustrated rhythm 2, 3, or 4 from above and play it as you imagine, or superimpose it over rhythm 1.

ÜBUNGEN: RHYTHMISCHE VERSCHIEBUNGEN

Verschieben Sie eine Viertelnote um vier Schläge (zwischen den Tönen) während Sie die Skala aufwärts spielen:

Die obigen Noten- und Pausenwerte halbiert.

Verschiebung zweier Achtelnoten um eine Achtelpause am Beispiel von auf- und absteigenden Dominantseptakkorden.

Hier nun eine Auflistung von vier der im Buch beschriebenen Rhythmen. Achten Sie darauf, daß der letzte Ton jeder rhythmischen Figur auf die “2 und” fällt.

Wenn Sie den ersten Rhythmus spielen oder im Kopf hören können, dann müßten Ihnen die drei anderen Rhythmen leichter fallen, weil Sie dann wissen, an welcher Stelle Sie den Ton auf der “2 und” spielen müssen. Probieren Sie mal diese einfache Übung: lassen Sie jemand anderen den ersten Rhythmus immer und immer wieder spielen (egal mit welchen Tönen). Nach einigen Takten setzen Sie mit dem zweiten Rhythmus ein und wiederholen ihn mindestens viermal. Dann wechseln Sie auf den dritten Rhythmus und wiederholen diesen mindestens viermal. Ebenso verfahren Sie mit dem vierten Rhythmus. Danach versuchen Sie, folgende zweitaktige Phrasen zu spielen (egal mit welchen Tönen):

Und schließlich versuchen Sie, die oben dargestellten Rhythmen 2, 3, und 4 zu isolieren und ohne fremde Hilfe nach Ihrer eigenen Vorstellung über Rhythmus 1 zu spielen.



ETUDE 1

(Minor Blues)

CHORUS 1

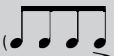
Musical notation for the first system of Chorus 1. Chords: A-7, E-7, A-7, E-7, A13b9.

Musical notation for the second system of Chorus 1. Chords: D-9, D-69, A-7.

Musical notation for the third system of Chorus 1. Chords: F9, E7#9, A-7, D9, E-7, E7#9.

CHORUS 2

Musical notation for the first system of Chorus 2. Chords: A-7, F9, E7#9, A-7, E-7, A7b9.



Track 2
Track 26 (Play-Along)

ETUDE 2

(based on the chord changes to "Confirmation")

F⁶C A⁷ D-7 C-9 F 3

B^b9 G[#]7 A⁶ D7^{#5}9 G9 G-9 C7^{#5}b9

F⁷9 A7^{#5}b9 D-7 C-7 F9

B^b7 B⁹7 A⁶7 D7^{#5}9 G-9 C⁶ F6⁹ D-7 D^b9



Track 3
Track 27 (Play-Along)

ETUDE 3

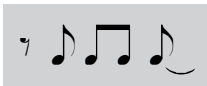
(based on the chord changes to "If I Should Lose You")

Chord changes: G, A \flat , F \flat , G, F-7, 3b7

Chord changes: E \flat , F \flat , B \flat , E \flat , G-7

Chord changes: C-7, F \flat , B \flat , C-7

Chord changes: C, C-7, D7#9, D7b9



ETUDE 4

(based on the chord changes to "Stella By Starlight")

INTRO (V.C.)

7

E6 A-7 C-7 F6 F9b5

5

E6 Bb-7(b9) Eb7 Ab9

9

Bb7 E6 A-7(b9) D-7 Eb9



ETUDE 5

(based on the chord changes to "Misty")

INTRO

Chord changes: $Bb_7^c /$ E- $Bb_7^c //$ $C_+ -$ C-9 B 3

Chord changes: Bb_7^c F-7 Bb_7^c Eb_7^c Eb_7^c Fb_7 Ab_3

Chord changes: $D_7 -$ G_7^c $C_7 -$ F_7^c F_7^c F_7^c $D_7 -$ G_7^c $C_7 -$ F_7^c

Chord changes: Bb_7^c E-7 Bb-7 Eb_7^c Eb_7^c Ab_3 Ab_3

Chord changes: $D_7 -$ G_7^c $C_7 -$ F_7^c F_7^c Bb_7^c Eb_7^c Ab_3 Bb_7^c Bb_7^c



ETUDE 6

(based on the chord changes to "Blue Bossa")

Chord changes: C-9, F-9

Chord changes: Dø, G7#5b9, C-7

Chord changes: Eb-9, Ab 3, Ab7#5, DbΔ9

Chord changes: Dø, G7#5b9, C-9, Dø, G7b9



ETUDE 7

(based on the chord changes to "Satin Doll")

INTR

Chord changes: F7^{b9}, Bb7^{b9}, Bb7^{b9} E7^{b9}, F7^{b9} E7^{b9}, D7^{b9}, C7^{b9} E7^{b9}

Chord changes: F7^{b9}, Bb7^{b9}, F7^{b9}, Bb7^{b9}, G7^{b9}, C7^{b9}, G7^{b9}, C7^{b9}

Chord changes: F7^{b9}, Bb7^{b9}, F7^{b9} E7^{b9}, E7^{b9}, F7^{b9} E7^{b9}, D7^{b9}, C7^{b9}

Chord changes: F7^{b9}, Bb7^{b9}, F7^{b9}, Bb7^{b9}, G7^{b9}, C7^{b9}, G7^{b9}, C7^{b9}



ETUDE 8

(based on the chord changes to "What Is This Thing Called Love?")

F 3 F⁻ al B^b- 6⁹

G⁶ C⁻⁷ 6⁹ F⁶ 9 = 3

F⁻ al B^b- 6⁹

G⁶ C⁻⁷ 6⁹ F⁶ 9 F- 9



RANDOM UPBEATS



Track 9
Track 33 (Play-Along)

ETUDE 9

(based on the chord changes to "Autumn Leaves")

Chord changes: C⁹, F⁹, F⁹ E⁵, B^bΔ⁹, E^bΔ⁹

Chord changes: A⁹, [-]⁹, G⁹, G7^{al}

Chord changes: C⁹, F⁹ sus⁴, F⁹, B^bΔ⁹, E^bΔ⁹

Chord changes: A⁹, [-]⁹, G⁹



ETUDE 10

(based on the chord changes to "All Of Me")

Chord changes: E^b7, G⁻

Chord changes: C⁻, C⁻7, F⁻

Chord changes: G⁻7, G⁻, C⁻

Chord changes: F⁻, F⁻7, E⁻, B^b7



ETUDE 11

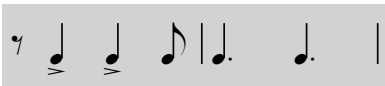
(based on the chord changes to "Out Of Nowhere")

Chord changes: G^c Eb 3

Chord changes: G^c F 3

Chord changes: A-7 E-7c A-9

Chord changes: Eb 3 Eb^c A-9 D7#5#9



ETUDE 12

(based on the chord changes to "Someday My Prince Will Come")

INTRO



ETUDE 13

(based on the chord changes to "Days Of Wine And Roses")

FΔ E♭C Aø D7alt

G- C E♭9♯ E♭9 sus E♭ 3

FΔ 3 D-9 G-9

Eø A7alt Dø G7alt G-7 C13 C7alt



ETUDE 14

(based on the chord changes to "It Could Happen To You")

B \flat 7 B \flat 7 C-7 C \sharp 7

D-7 E \flat -7 E \flat D G7 \sharp 5 \flat 9

C-7 A \flat 7 B \flat Δ A \flat D7 \flat 9 G-7

C \flat C-7 F-7 F7 \sharp 9 3 \flat Δ 6 \flat



ETUDE 15

(based on the chord changes to "There Will Never Be Another You")

Chord changes: C6⁹, 3x, :7#5#9

Chord changes: A-9, 5, 3-7, 9#, C7#5b9

Chord changes: F6⁹, 9, 3b13, C6⁹

Chord changes: D9, 13, D-7, G3, G7alt



ETUDE 16

(based on the chord changes to "Don't Blame Me")

Chord changes: $G\Delta^c$, $F\Delta$, $F\Delta$, $A\Delta$, $D7\#5b9$, $G\Delta^9$, $F-9$

Chord changes: $A\Delta$, $D7al$, $B\Delta$, $E7al$, $A-7$, $D7\#9$, $B-7$, $Bb7$, $A-7$, $Ab7$

Chord changes: $G\Delta^9$, $F\Delta$, $B-7$, $E\Delta$, $A\Delta$, $D7b9$, $G\Delta^9$, $E-9$

Chord changes: $A\Delta$, $D7b9$, $B\Delta$, $E-7b9$, $A-7$, $D7\#5b9$, $G\Delta^9$, $D-7$, $Dbb7b5$



Track 17
Track 41 (Play-Along)

ETUDE 17

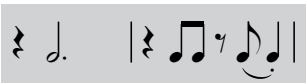
(based on the chord changes to "How High The Moon")

Chord changes: G^L C, G^L, G-9, C9#

Chord changes: F^L C, F^L, F-9, Bb7#5#9

Chord changes: Eb^L C, A^L, D7b9, G-6, A-7, C9

Chord changes: B-, E-151^L, A-, D9b5, D7b5b9, G6^L



Track 18
Track 42 (Play-Along)

ETUDE 18

(based on the chord changes to "I've Got Rhythm")

F Δ^c D7 $\#9$ G-7 C Δ^c A-7 D9 G-7 C7 $\#9$

F Δ^c B \flat 7 Δ^c B \flat -9 A-7 D7 $\#9$ G-7 C7 $\flat9$

5

F Δ^c D9 G-7 C Δ^c A Δ^c D7 $\#9$ G-7 C7 $\#9$

9

F Δ^c B \flat 7 Δ^c B \flat 7 F Δ 7 Δ^c F Δ 9

13



ETUDE 19

(based on the chord changes to "Body And Soul")

INTR: 2

(DRUMS)

F 7 E 3

E \flat 7 A \flat 7 G 7 F \sharp 7

F 7 E 7/E D 6 D \flat 3 G7 \flat 9

G 7 F 7 E 7 B \flat 7 E \flat 7 G \flat 3



ETUDE 20

(based on the chord changes to "I'll Remember April")



Track 20
Track 44 (Play-Along)

1

G Δ †

5

G Δ -7

9

A Δ c

F Δ -7c

D Δ

E7 Δ 9

13

A Δ -7

D9 \sharp

G Δ c

17

C Δ -c

F Δ 3

B Δ b

G7 Δ 5b9

21

C Δ -7

F Δ 3

B Δ b Δ 6 Δ 9



ETUDE 21

(Blues)

CHORUS 1

Chorus 1, measures 1-4. Chords: F 3, Bb9, Bb7, F 3, C-9, F 3.

Chorus 1, measures 5-8. Chords: Bb9, Bb7, F6 9, G-7, A-7, Ab-7.

Chorus 1, measures 9-12. Chords: G-7, C7 al, F6 9, D7b9, G9, Eb13.

CHORUS 2

Chorus 2, measures 13-16. Chords: F 3 b9, Bb9, Bb7, F 3 b9.



ETUDE 22

(based on the chord changes to "All The Things You Are")

Chord changes: F_{add}^{\flat} , B_{b}^{\flat} , E_{b}^{\flat} , A_{b}^{\flat}

Chord changes: D_{b}^{\flat} , $G_{\text{7}}^{\flat 15}$, C_{7}^{\flat}

Chord changes: B_{b}^{\flat} , E_{b}^{\flat}

Chord changes: A_{b}^{\flat} , F_{7}^{\flat} , D_{7}^{\flat} , G_{7}^{\flat} , $E_{\text{7}}^{\flat 15}$



ETUDE 23

(based on the chord changes to "Lover Man")



Track 23
Track 47 (Play-Along)

INTRC 4 G-7 C9 G-7 C9

(DRUMS)

C-7 F9 C-7 =9 =7#5#9

Bb 3 Bb7#9 Eb9 Eb 3

Gb 3sus Gb 3 F7#5#c Bb7#9 D7#5#9 3b7#9 A7#5#9

D-add9 D-Δ9 D-9 G9



ETUDE 24

(based on the chord changes to "Cherokee")

Chord changes: $F \epsilon^c$, $F \Delta \epsilon^c$, $C-7$, $=7\#9$

Chord changes: $Rb\Delta \epsilon$, $Rb\epsilon^c$, $Rb7 \ 3$, $Fb\epsilon$

Chord changes: $F \epsilon^c$, $G \ 3$

Chord changes: $G-9$, $D7b9$, $G-9$, $C7\#5b9$

Chord changes: $F \epsilon^c$, $F \epsilon^c$, $C-7$, $F7alt$