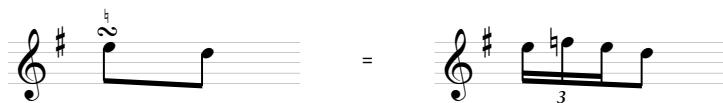
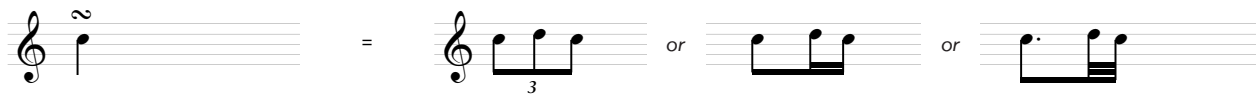


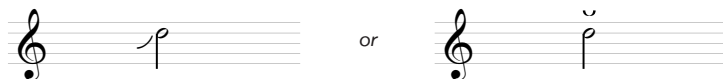
Here are some musical "ornaments" you'll see throughout the book and hear demonstrated on the CD:

Hier sind einige musikalische Ornamente, die Sie im Buch sehen und auf der CD hören werden:

THE TURN



**THE SLIDE
(or gliss)**



Slide or lip up into the pitch of the written note.

Der Ton wird durch Lippendruck zur notierten Tonhöhe hochgezogen.

THE FALL OFF



Descend from the note with fingers and/or lips. First attack the written note (in tune) and then, depending upon the duration of the fall off, you can fall from the interval of a third to a few octaves.

Mit Hilfe der Finger und/oder der Lippen gleiten Sie vom notierten Ton aus abwärts. Zunächst wird der Ton (in der korrekten Tonhöhe) angespielt, und dann spielen Sie, je nach Dauer des Glissandos, eine Terz oder bis zu mehreren Oktaven abwärts.



ETUDE 10

GUIDE TONE VERSION
(based on the chord changes to "All Of Me")



Track 10 (Duo Play-Along)
Track 35 (Play-Along)

C6 E7

A7 A7b9 D-

E7b9 E7 A-

D7 D7b9 D-7 G7

CΔ E7b9

A7b9 A7#9 D- C#m- D-

FΔ F- Bb- E-7 A9

D7 D-7 G7 C6 2



ETUDE 10

(based on the chord changes to "All Of Me")



Track 10 (Listening)
Track 35 (Play-Along)

C⁶ E⁻
 A⁻ A7^{b9} D⁻
 E7^{b5} E7 A⁻
 D7 D7^{b5} D⁻ G7
 C^Δ E7^{b9}
 A7^{b9} A7^{#9} D⁻ C^{#m} D⁻
 F^Δ F⁻ Bb⁷ E⁻ A^c
 D7 D⁻ G7 C⁶

Musical score for Etude 10, featuring 8 staves of music in treble clef. The score includes various chord changes and musical notations such as slurs, accents, and fingerings. The chords are: C⁶, E⁻, A⁻, A7^{b9}, D⁻, E7^{b5}, E7, A⁻, D7, D7^{b5}, D⁻, G7, C^Δ, E7^{b9}, A7^{b9}, A7^{#9}, D⁻, C^{#m}, D⁻, F^Δ, F⁻, Bb⁷, E⁻, A^c, D7, D⁻, G7, C⁶.



ETUDE 19

GUIDE TONE VERSION
(based on the chord changes to "Body And Soul")



Track 19 (Duo Play-Along)
Track 44 (Play-Along)

INTRO

Chords: Eb, F, Gb7, Eb

(DRUM)

Chords: Eb, Ab, Gb7, Gb7

Chords: Eb, Ab, D7, D7, G7b9

Chords: Eb, F, Bb7#5, Eb, Gb7

Chords: Eb, Ab, Gb7, Eb

Chords: Eb, Ab, Gb7, Gb7

Chords: Eb, Ab, D7, D7, G7b9

Chords: Eb, F, Bb7#5, Eb, Eb



ETUDE 19

(based on the chord changes to "Body And Soul")



Track 19 (Listening)
Track 44 (Play-Along)

INTRO F Eb Eb

(DRUM)

5 Eb Ab C-7 Gb9

9 F Eb D7 C#13 G7bc

12 F Eb Bb7#5# Eb Gb13#

16 F Eb Eb E-

20 Eb Ab C-7 Gb9

24 F Eb D7 C#13 G7bc

28 F Eb Bb7#5# Eb D7



ETUDE 23

GUIDE TONE VERSION
(based on the chord changes to "Lover Man")



Track 23 (Duo Play-Along)
Track 48 (Play-Along)

INTRO

(DRUM)

E

E⁻

E⁻

A7

D7#9

G⁻

B7/su B7

A7/su A7#5# D7#9

F#7# D7# C#7#

F#

F#

F#

B⁻

EΔ

AΔ

EΔ

F⁻

F⁻

F⁻

A7#9

DΔ#

GΔ#

F⁻ C...

C#7#

F⁻

E⁻

F⁻

E⁻



ETUDE 23

(based on the chord changes to "Lover Man")



Track 23 (Listening)
Track 48 (Play-Along)

INTRO E E⁻

(DRUM)

3

5

7

B^b/su B^b A^b/su A^b#5^b D^b#11 E^b7^b D^b7^b C^b7^b

10

ot. *mf*

12

14

ot. *mf*

16

18

E⁻ E⁻ E⁻ A7^{#c}

D^bΔ[#] G^bΔ[#] C^b E^b7^b

E⁻ E⁻ E⁻ E⁻

ETUDE 24

GUIDE TONE VERSION
(based on the chord changes to "Cherokee")



Track 24 (Duo Play-Along)
Track 49 (Play-Along)

Chord: C6^c

Chords: FΔ, F-7, Bb-

Chords: CΔ, D^c

Chords: D-7, A7b^c, D-7, G7b^c

Chords: CΔ, G-7, C-#^c

Chords: FΔ, F-7, Bb-

Chords: CΔ, D9

Chords: D-7, G-, C6

ETUDE 24

(based on the chord changes to "Cherokee")



Track 24 (Listening)
Track 49 (Play-Along)

C6^c G-7 C-#^c

FΔ F-7 Bb⁻

CΔ D^o

D-7 A7^bc D-7 G7^bc

CΔ G-7 C7^c

FΔ F-7 Bb⁻

CΔ D^o

D-7 G7 C6