

# TABLE OF CONTENTS

## *PART 1*

THE 4 BASIC SCALES IN JAZZ IMPROVISATION	10
THE 8 BASIC PENTATONIC SCALES	11
THE 4 BASIC SCALES IN JAZZ IMPROVISATION - THEIR MODES AND SCALE VOICINGS	12
PENTATONIC AND SCALE RELATIONSHIPS	
E $\flat$ IONIAN	15
G DORIAN	16
G PHRYGIAN	17
G LYDIAN	18
C MIXOLYDIAN	19
D AEOLIAN	20
A LOCRIAN	21
F LYDIAN AUGMENTED	22
F LYDIAN $\flat 7$	23
D AEOLIAN $\flat 5$	24
G ALTERED	25
E ALTERED $\sharp 5$	26
F LYDIAN MINOR	27
G MIXOLYDIAN $\flat 2$	28
D LOCRIAN $\sharp 6$	29
G MIXOLYDIAN $\flat 2, \flat 6$	30
E, G, B $\flat$ , D $\flat$ DOMINANT DIMINISHED	31
BASIC EXERCISES ON PENTATONICS	
C MAJOR PENTATONIC	33
C PENTATONIC $\flat 6$	34
C PENTATONIC $\flat 2$	35
C PENTATONIC $\flat 3$	36
C PENTATONIC $\flat 3, \flat 5$	37
C PENTATONIC $\flat 3, \flat 6$	38
C PENTATONIC $\flat 2, \flat 6$	39
C DOMINANT PENTATONIC I	40
ADVANCED EXERCISES ON PENTATONICS	
INSIDE OUTSIDE TURNAROUNDS	41
TURNAROUND ON MINOR SECONDS	41
TURNAROUND ON MINOR THIRDS	42
TURNAROUND ON TRITONUSINTERVALLS	42
TURNAROUND ON MAJOR THIRDS	42
TURNAROUND ON FOURTHS	42
TURNAROUND ON FOURTHS AND FIFTHS	42
TURNAROUND ON DIMINISHED FIFTHS	43
EXERCISES ON CHORDS	43
EXERCISES ON SCALES	
G, B $\flat$ , D $\flat$ , E DOMINANT DIMINISHED	46
C, E $\flat$ , F $\sharp$ , A DOMINANT DIMINISHED	47
WHOLE TONE	47
D DORIAN	47
G ALTERED	48
B $\flat$ LYDIAN $\flat 7$	48
II-V-I PROGRESSIONS	48
EXERCISES ON HEXATONICS	
C SYMMETRICAL HEXATONIC	49
C HEXATONIC $\flat 2, \flat 7$	49
C WHOLE TONE	49
APPLICATION OF PENTATONIC SCALES TO CHORD PROGRESSIONS	
MINOR BLUES	50
MINOR BLUES	50
BLUES IN F	50
RHYTHM CHANGES	50
JAZZ STANDARD	50

## APPLICATION OF PENTATONIC SCALES TO MODAL HARMONY

MAJOR-MINOR	51
MAJOR-MINOR	51
LYDIAN-IONIAN	51
PHRYGIAN-LYDIAN +2	51
LYDIAN $\flat$ 7-MIXOLYDIAN	51
LYDIAN-LYDIAN +2	51

## PART 2

### PENTATONICS AND SCALES IN RELATIONSHIP TO THE OVERTONE CHORDS 54

### PENTATONICS, SCALES AND CHORDS IN CONJUNCTION WITH THE OVERTONE SERIES 58

OVERTONE SCALE	58
FIFTHS	59
THIRDS AND FIFTHS	59
SCALES AND THEIR RESONANT CELLS	59
CHORDS AND THEIR RESONANT CELLS	60
PENTATONIC AND THE FIBONACCI SERIES	60
THE GOLDEN MEAN CHORD	60

### 8 ALTERED PENTATONICS 61

### THE 4 BASIC SCALES IN JAZZ IMPROVISATION - THEIR »INSIDE« PENTATONICS 62

C MELODIC MAJOR	62
C MELODIC MINOR	64
C HARMONIC MAJOR	66
C HARMONIC MINOR	68

### THE 4 BASIC SCALES IN JAZZ IMPROVISATION - WITH ALTERED SECONDS, THIRDS, FIFTHS AND SIXTHS 70

C MELODIC MAJOR $\flat$ 2	60
C MELODIC MINOR $\flat$ 2	70
C HARMONIC MAJOR $\flat$ 2	70
C HARMONIC MINOR $\flat$ 2	70
C MELODIC MAJOR +5	70
C MELODIC MINOR +5	71
C MELODIC MAJOR +2	71
C HARMONIC MAJOR +2	71
C MELODIC MAJOR +6	71
C MELODIC MAJOR $\flat$ 2, $\flat\flat$ 3	71

### 16 PENTATONIC SCALES AND THEIR EXACT INVERSIONS 72

## PART 3

### PLAY-A-LONG COMPOSITIONS

FUNKY FROGS (MEDIUM FUNK)	74
FOUR AREAS (MEDIUM FUNK)	75
CHORD LAND (RELAXED 8TH FEEL JAZZ)	76
SOLAR BATH (LATIN FUNK)	77
INNER VOICINGS (STRAIGHT 8TH FEEL BALLAD)	78

### ABOUT THE AUTHOR 79

# BASIC EXERCISES ON PENTATONICS

## C MAJOR PENTATONIC

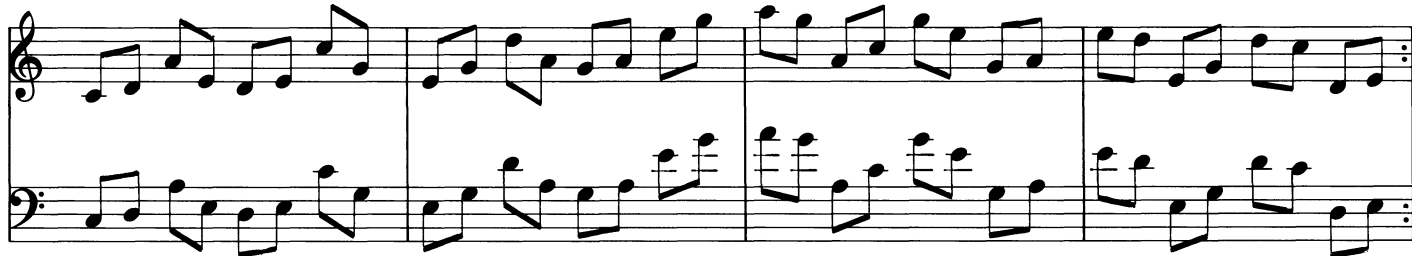
1



2



3



4



# ADVANCED EXERCISES ON PENTATONICS

## 1 INSIDE-OUTSIDE-INSIDE TURNAROUNDS

Exercise 1, measures 1-3. Each measure contains a treble and bass staff with a pentatonic scale. Measure 1: C Pentatonic (treble) and G Pentatonic (bass). Measure 2: D Pentatonic (treble) and A Pentatonic (bass). Measure 3: E Pentatonic (treble) and B Pentatonic (bass).

Exercise 1, measures 4-6. Each measure contains a treble and bass staff with a pentatonic scale. Measure 4: G $\flat$  Pentatonic (treble) and D $\flat$  Pentatonic (bass). Measure 5: A $\flat$  Pentatonic (treble) and E $\flat$  Pentatonic (bass). Measure 6: B $\flat$  Pentatonic (treble) and F Pentatonic (bass).

Exercise 2, measures 1-4. Each measure contains a treble and bass staff with a pentatonic scale. Measure 1: C Pentatonic (treble) and A $\flat$  Pentatonic (bass). Measure 2: E Pentatonic (treble) and C Pentatonic (bass). Measure 3: C Pentatonic (treble) and E Pentatonic (bass). Measure 4: A $\flat$  Pentatonic (treble) and C Pentatonic (bass).

Exercise 3, measures 1-4. Each measure contains a treble and bass staff with a pentatonic scale. Measure 1: C Pentatonic (treble) and G Pentatonic (bass). Measure 2: D Pentatonic (treble) and A Pentatonic (bass). Measure 3: E Pentatonic (treble) and B Pentatonic (bass). Measure 4: C Pentatonic (treble) and G Pentatonic (bass).

## 4 TURNAROUNDS ON MINOR SECONDS

Exercise 4, measures 1-4. Each measure contains a treble and bass staff with a pentatonic scale. Measure 1: C Pentatonic (treble) and G $\flat$  Pentatonic (bass). Measure 2: D $\flat$  Pentatonic (treble) and A $\flat$  Pentatonic (bass). Measure 3: E $\flat$  Pentatonic (treble) and B $\flat$  Pentatonic (bass). Measure 4: F $\sharp$  Pentatonic (treble) and C $\sharp$  Pentatonic (bass).

# EXERCISES ON SCALES

G, B $\flat$ , D $\flat$ , E DOMINANT DIMINISHED

1

Exercise 1: A four-measure piece. The first two measures show a G major scale (G-A-B-A-G-F-E) in the treble clef and a G major scale (G-F-E-D-C-B-A) in the bass clef. The last two measures show a dominant diminished triad (G-B $\flat$ -D $\flat$ ) in the treble clef and a dominant diminished triad (G-B $\flat$ -D $\flat$ ) in the bass clef.

2

Exercise 2: A four-measure piece. The first two measures show a B $\flat$  major scale (B $\flat$ -C-D-C-B $\flat$ -A-G-F) in the treble clef and a B $\flat$  major scale (B $\flat$ -A-G-F-E-D-C-B $\flat$ ) in the bass clef. The last two measures show a dominant diminished triad (B $\flat$ -D $\flat$ -F) in the treble clef and a dominant diminished triad (B $\flat$ -D $\flat$ -F) in the bass clef.

3

Exercise 3: A four-measure piece. The first two measures show a D $\flat$  major scale (D $\flat$ -E-F-E-D $\flat$ -C-B-A) in the treble clef and a D $\flat$  major scale (D $\flat$ -C-B-A-G-F-E-D $\flat$ ) in the bass clef. The last two measures show a dominant diminished triad (D $\flat$ -F-A) in the treble clef and a dominant diminished triad (D $\flat$ -F-A) in the bass clef.

4

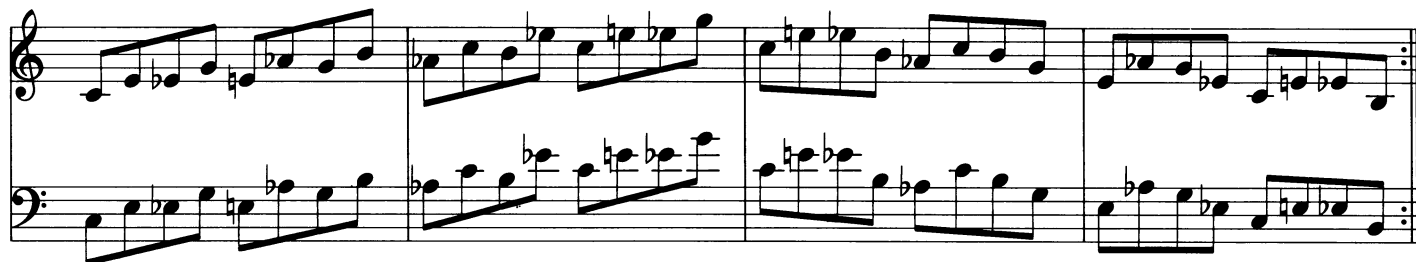
Exercise 4: A four-measure piece. The first two measures show an E major scale (E-F#-G-A-G-F#-E) in the treble clef and an E major scale (E-D-C-B-A-G-F#-E) in the bass clef. The last two measures show a dominant diminished triad (E-G-A) in the treble clef and a dominant diminished triad (E-G-A) in the bass clef.

5

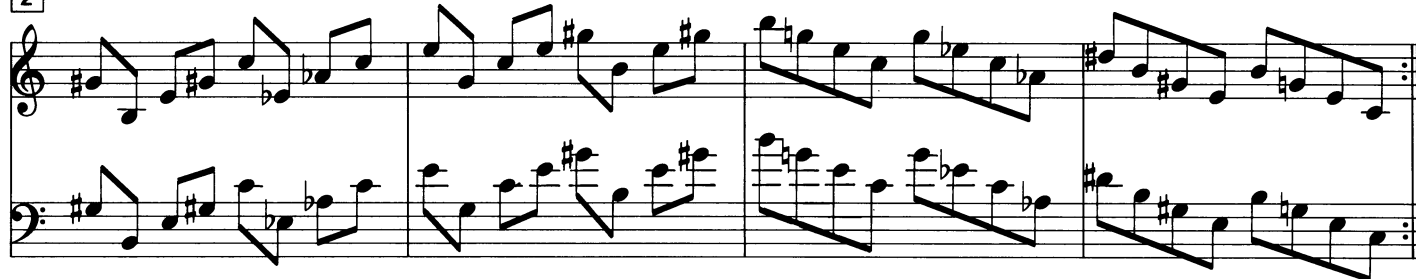
Exercise 5: A four-measure piece. The first two measures show a G major scale (G-A-B-A-G-F-E) in the treble clef and a G major scale (G-F-E-D-C-B-A) in the bass clef. The last two measures show a dominant diminished triad (G-B $\flat$ -D $\flat$ ) in the treble clef and a dominant diminished triad (G-B $\flat$ -D $\flat$ ) in the bass clef.

# EXERCISES ON HEXATONICS

## 1 C SYMMETRICAL HEXATONIC (AUGMENTED HEXATONIC)



## 2



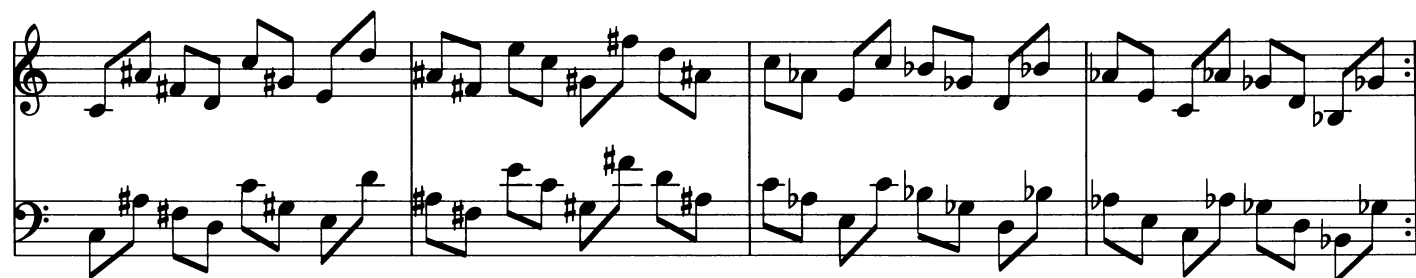
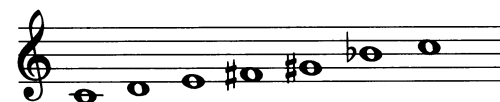
## 3



## 4 C HEXATONIC b2, b7



## 5 C WHOLE TONE



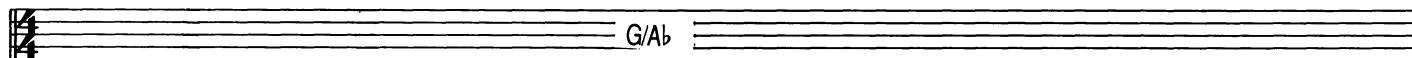
# FUNKY FROGS

MEDIUM FUNK ♩ = 96

ADELHARD ROIDINGER

## INTRO

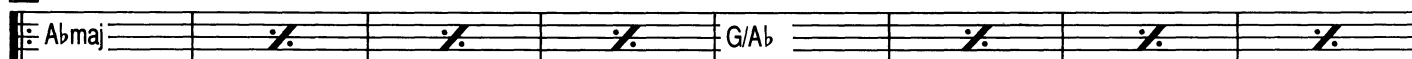
A♭ LYDIAN MINOR



## CHORUS (PLAY 2 TIMES)

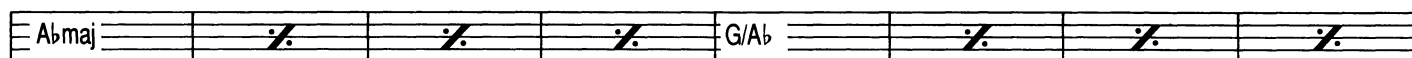
A A♭ LYDIAN

A♭ LYDIAN MINOR



A♭ LYDIAN

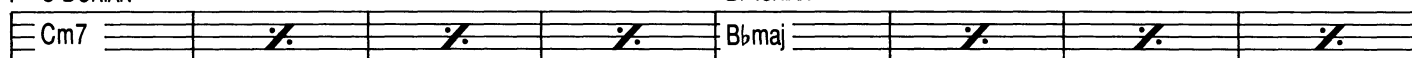
A♭ LYDIAN MINOR



B

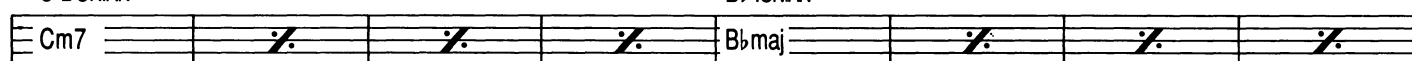
1. C DORIAN

B♭ IONIAN



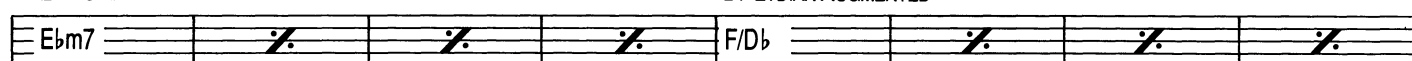
C DORIAN

B♭ IONIAN



E♭ DORIAN

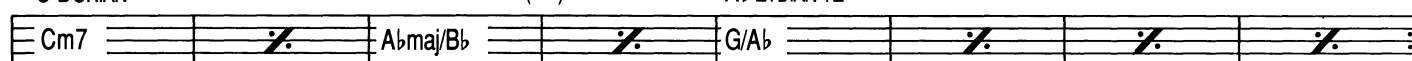
D♭ LYDIAN AUGMENTED



C DORIAN

B♭ MIXOLYDIAN(♭2)

A♭ LYDIAN +2



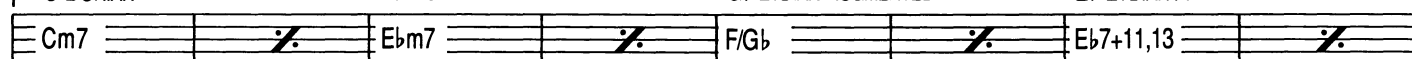
C

2. C DORIAN

E♭ DORIAN

G♭ LYDIAN AUGMENTED

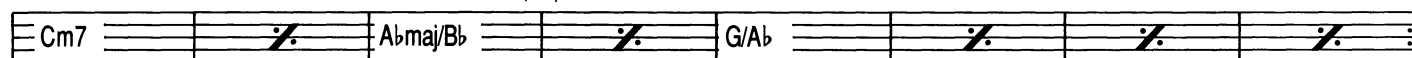
E♭ LYDIAN ♭7



C DORIAN

B♭ MIXOLYDIAN(♭2)

A♭ LYDIAN +2



## FADE OUT

A♭ LYDIAN

A♭ LYDIAN MINOR

