

## THE AMERICAN COUNTING SYSTEM

### 4/4 TIME SIGNATURE

*Rhythmic rates and their corresponding rests found in this book*

Try using this counting approach when working on each solo.

#### Whole note

1, 2, 3, 4

#### Half Notes

1, 2, 3, 4

#### Quarter Notes

1, 2, 3, 4

#### Eighth Notes

1 AND, 2 AND, 3 AND, 4 AND

#### Sixteenth Notes

1 E AND UH, 2 E AND UH, 3 E AND UH, 4 E AND UH

#### Thirty Second Notes

1 E AND UH, 2 E AND UH, 3 E AND UH, 4 E AND UH or  
1 AND, 2 AND, 3 AND, 4 AND

#### Eighth Note Triplets

1 TRIP LET, 2 TRIP LET, 3 TRIP LET, 4 TRIP LET

#### Sixteenth Note Triplets

1 TRIP LET AND TRIP LET, 2 TRIP LET AND TRIP LET,  
3 TRIP LET AND TRIP LET, 4 TRIP LET AND TRIP LET, or  
1 AND, 2 AND, 3 AND, 4 AND or  
1 TRIP LET, 2 TRIP LET, 3 TRIP LET, 4 TRIP LET

#### Quarter Note Triplets

1 TRIP LET, 2 TRIP LET, 3 TRIP LET, 4 TRIP LET

#### Half Note Triplets

1 TRIP LET, 2 TRIP LET, 3 TRIP LET, 4 TRIP LET

*Rhythmic rates and their corresponding rests not found in this book*

#### Sextuplets

1, 2, 3, 4, 5, 6, 2, 2, 3, 4, 5, 6, 3, 2, 3, 4, 5, 6, 4, 2, 3, 4, 5, 6 or  
1 TRIP LET, 2 TRIP LET, 3 TRIP LET, 4 TRIP LET or  
1 AND, 2 AND, 3 AND, 4 AND

#### Quintuplets

1, 2, 3, 4, 5, 2, 2, 3, 4, 5, 3, 2, 3, 4, 5, 4, 2, 3, 4, 5

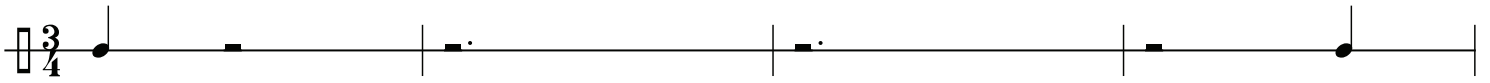
#### Septuplets

1, 2, 3, 4, 5, 6, 7, 2, 2, 3, 4, 5, 6, 7, 3, 2, 3, 4, 5, 6, 7, 4, 2, 3, 4, 5, 6, 7

# Silence 10



*This solo should be subdivided and counted in quarter notes, eighth notes, sixteenth notes, and eighth note triplets. When counting in eighth note triplets all eighth notes are to be played in the Swing Interpretation of the eighth note. ♪ =  $\overset{\frown}{\text{♪}} \overset{\frown}{\text{♪}} \overset{\frown}{\text{♪}}$*



# Silence 14



This solo should be subdivided and counted according to the measure being played:  
I. Measures of rest should be subdivided and counted in quarters, eighths, sixteenths and eighth note triplets.  
II. Measures with figures should be subdivided and counted appropriately.  
Count the measure in 6 or subdivide 3 + 3

1

5

9

13

17

21

25

29

# Silence 20



This solo should be subdivided and counted in the following six ways:

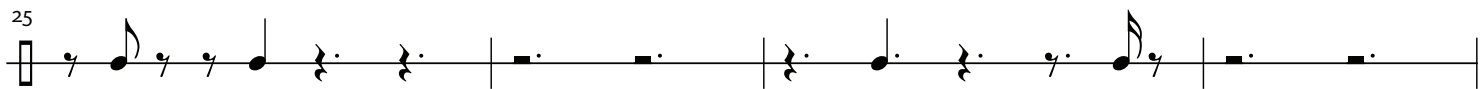
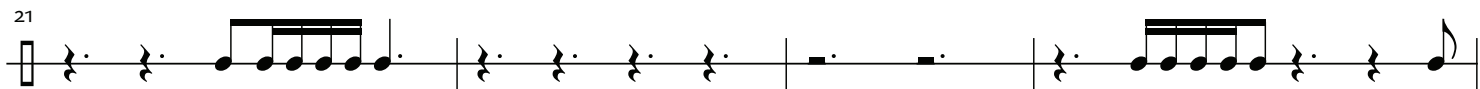
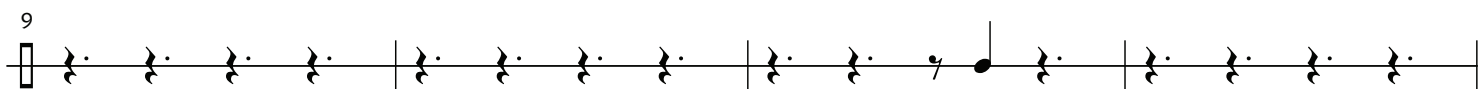
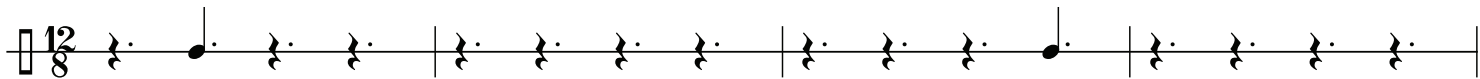
*Eighth note subdivision:* 12/8 (1 2 3 4 5 6 7 8 9 10 11 12),

6/8 (1 2 3 4 5 6, 2 2 3 4 5 6), 3/8 (1 2 3, 2 2 3, 3 2 3, 4 2 3).

*Sixteenth note subdivision:* 12/8 (1+2+3+4+5+6+7+8+9+10+11+12+),

6/8 (1+2+3+4+5+6+, 2+2+3+4+5+6+), 3/8 (1+2+3+, 2+2+3+, 3+2+3+, 4+2+3+).

Count each measure in its entirety or subdivide into 2's and 3's



# Silence 26



*This solo should be subdivided and counted in sixteenth notes.*

*Count each measure in its entirety or subdivide into 2's and 3's*

*Remember: 4/4 is counted 1 E AND UH. 4/8 is counted 1+2+3+4+. 4/16 is counted 1 2 3 4*

1 3/4 - . | 2/4 . . | 4/4 - - | 3/4 - . | 5/8

5 5/8 . . | . . | 4/4 . | 5/8 . . | 3/4

9 3/4 - . | 9/8 . . . | . . . | . . . | 3/4

13 3/4 - . | 7/8 - . . | 4/4 - - | 4/8 - - | 3/16

17 3/16 . | 3/8 . . | . . | . . | 5/16

21 5/16 . . | 4/4 . . . | 3/4 - . | 5/16 . . | 9/16

25 9/16 . . . | 3/4 - - | 7/16 . . | 3/4 . |

29 - . | 5/16 . | 2/4 . . | 7/4 - - | . . . |