

TABLE OF CONTENTS

Introduction	6
How to Work with this Book	7
Note Values	8
Legend	9
Rhythms 4/12	10
The Rhythm of Bikut.Yop	14
Rhythmic Exercise #1	16
Bikut.Yop Jazzy Variations	17
Bikut.Yop Philosophy	22
Rhythmic Exercise #2	31
Bikut.Yop Independence in 4/12	32
4/12 Feet Combination	36
4/12 Rhythm	37
4/12 Bikut.Yop Jazzy	39
12/8 Afro Flam Taps	40
4/4 Afro Flam Taps	45
Rhythmic Exercise #3	49
Rhythmic Exercise #4	51
Rhythmic Exercise #5	53
4/4 Ashiko Rhythm	55
Ashiko Introductions	62
Ashiko Jazzy	63
Special Thanks	64
About the Author	65
CD Index	66

NOTE VALUES

Whole note Rest



Half note triplet Rest



Half note Rest



Quarter note triplet Rest



Quarter note Rest



Eighth note triplet Rest



Eighth note Rest



Sixteenth note triplet Rest



Sixteenth note Rest



Thirty-second note triplet Rest

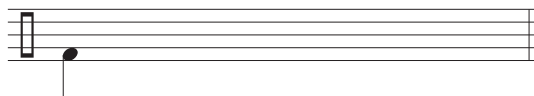


Thirty-second note Rest

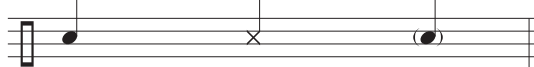


LEGEND

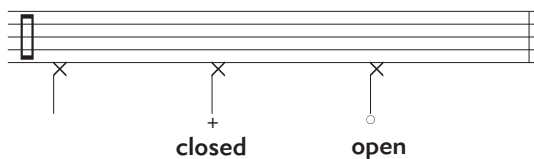
Bass drum



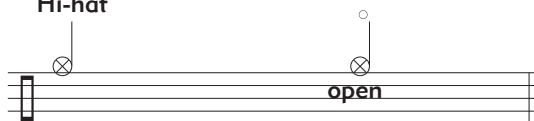
Snare Rim shot Ghost note



Hi-hat foot



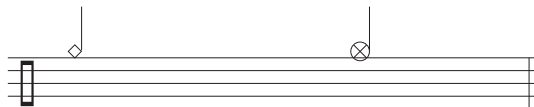
Hi-hat



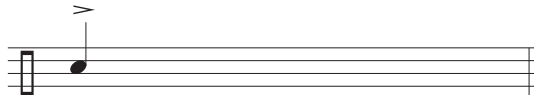
Tom 1 Tom 2 Tom 3



Bell Ride cymbal



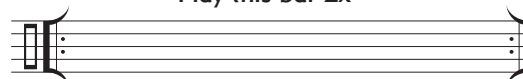
Accent



Repeat previous bar



Play this bar 2x



RHYTHMIC EXERCISE #1

- First, play examples A through F slowly with your left hand.
- Play each dotted quarter note with the left foot (hi-hat).
- Combine examples A through F with each variation on the next page.



After having executed this exercise using your left hand while playing the hi-hat with your left foot, repeat the same exercise with your right hand on the ride cymbal, playing exactly what the left hand has done before. Practise these exercise variations together with the left hand combinations on page 10.

BIKUT.YOP JAZZY VARIATIONS

3

A

4

B

5

C

6

7

D

8

E

9

F

Combine each variation with exercises A through F on the preceding page, which amounts to twelve measures per exercise.

4/12 FEET COMBINATION



A

r r r r r l r l

B

r l r l r l r l r l r l r l r l r l

C

l r r l r r l r r l r r r l l r l l r l l r l l

D

r l r l r l r l r l r l r l r l r l r l

E

r l r l r l r l r l r l r l r l r l r l

Rhythmic exercise #4 continued

H

A musical staff with a treble clef and a key signature of one flat. The staff contains two measures of music. The first measure has a quarter rest, followed by a quarter note on G4, a quarter note on F4, a quarter note on E4, a quarter note on D4, a quarter note on C4, and a quarter note on B3. The second measure has a quarter note on B3, a quarter note on C4, a quarter note on D4, a quarter note on E4, a quarter note on F4, a quarter note on G4, and a quarter note on A4. The notes are beamed together in pairs.

I

A musical staff with a treble clef and a key signature of one flat. The staff contains two measures of music. The first measure has a quarter rest, followed by a quarter note on G4, a quarter note on F4, a quarter note on E4, a quarter note on D4, a quarter note on C4, and a quarter note on B3. The second measure has a quarter note on B3, a quarter note on C4, a quarter note on D4, a quarter note on E4, a quarter note on F4, a quarter note on G4, and a quarter note on A4. The notes are beamed together in pairs.

J

A musical staff with a treble clef and a key signature of one flat. The staff contains two measures of music. The first measure has a quarter rest, followed by a quarter note on G4, a quarter note on F4, a quarter note on E4, a quarter note on D4, a quarter note on C4, and a quarter note on B3. The second measure has a quarter note on B3, a quarter note on C4, a quarter note on D4, a quarter note on E4, a quarter note on F4, a quarter note on G4, and a quarter note on A4. The notes are beamed together in pairs.

K

A musical staff with a treble clef and a key signature of one flat. The staff contains two measures of music. The first measure has a quarter rest, followed by a quarter note on G4, a quarter note on F4, a quarter note on E4, a quarter note on D4, a quarter note on C4, and a quarter note on B3. The second measure has a quarter note on B3, a quarter note on C4, a quarter note on D4, a quarter note on E4, a quarter note on F4, a quarter note on G4, and a quarter note on A4. The notes are beamed together in pairs.

L

A musical staff with a treble clef and a key signature of one flat. The staff contains two measures of music. The first measure has a quarter rest, followed by a quarter note on G4, a quarter note on F4, a quarter note on E4, a quarter note on D4, a quarter note on C4, and a quarter note on B3. The second measure has a quarter note on B3, a quarter note on C4, a quarter note on D4, a quarter note on E4, a quarter note on F4, a quarter note on G4, and a quarter note on A4. The notes are beamed together in pairs.

Ashiko rhythms #3

- First play rhythm A as notated, then replace the snare pattern as shown in #1 and finally replace the hi-hat (foot) pattern as shown in #2.
- Proceed in the same way with **B**, **C** and **D**.



A

B

C