

# IT'S RAGTIME!

Two-Part, accompanied, with optional bass, guitar and drums\*

Performance time: approx. 1:40

Words and Music by  
KIRBY SHAW (ASCAP)

In two (♩=108) (Spoken with breathless anticipation)

PART I

PART II

ACCOMP.

*mf*

*mf*

*f*

In two (♩=108)

B7

C7

It's Rag - time!\_

It's Rag - time!\_

It's Rag - time!\_

It's Rag - time!\_

5

(siren whistle)

5

B7

C7

B7

C7

B7

9

*mf*

Ban - jos strum - min', trum - pets blow - in', love the way they get it go - in',

*mf*

Ban - jos strum - min', trum - pets blow - in', love the way they get it go - in',

9

Em Em/D C7 B7 Em Em/D C7 B7

\*Bass/Guitar/Drums see pp. 10-11.

13



you can tell they're do-in' well, it's Rag - time!\_



you can tell they're do-in' well, it's Rag - time!\_

13

Em Em/D C7 B7 Em Em/D C7 B7



17



When I stam-mer, when I stut - tuh, when my heart is all a - flut - tuh,



When I stam-mer, when I stut - tuh, when my heart is all a - flut - tuh,

17

Em Em/D C7 B7 Em Em/D C7 B7



21



it's be-cause the band\_ is play-in' Rag - time!\_



it's be-cause the band\_ is play-in' Rag - time!\_

21

Em Em/D C7 B7 Em E7



25

In a jif - fy, I'll be dressed up nice and spiff - y!

In a jif - fy, I'll be dressed up nice and spiff - y!

25 Am Am/G F#m7(b5) B7 Em E7

29

It's so thrill - in', you will find me

It's so thrill - in', you will find me

29 Am Am/G F#m7(5) B7

more than will - in'!

more than will - in'!

N.C. C7 B7 *sva*

35

Tell me what are the chanc - es for some danc - in' cir - cum - stanc - es?

Tell me what are the chanc - es for some danc - in' cir - cum - stanc - es?

35

Em Em/D C7 B7 Em Em/D C7 B7

39

Hon - ey - bug, \_ let's cut a rug, \_ it's Rag - time!

Hon - ey - bug, \_ let's cut a rug, \_ it's Rag - time!

39

Em Em/D C7 B7 Em B7

43

(Brassy)

Yah dot dot dah!

Yah dot dot dah!

Yah dot dot dah!

Yah dot dot dah!

SOLO (opt. improv)

43

Em Em/D C7 B7 Em Em/D C7 B7

47

Yah dot dot dah dot!

Yah dot dot dah dot!

47

Em Em/D C7 B7 Em C7 B7

R.H. L.H. R.H. L.H.

51

Yah dot dot dah!

Yah dot dot dah!

51

Em Em/D C7 B7 Em Em/D C7 B7

Yah dot dot dah!

Yah dot dot dah!

55

Yah dot dot dah dot!

Yah dot dot dah dot!

55

Em Em/D C7 B7 Em B7(b13) Em (end solo)

59



Shake and shim - my\_ with the rhy - thm that is in\_ me.



Shake and shim - my\_ with the rhy - thm that is in\_ me.

59 Am Am/G F#m7(b5) B7 Em E7



63

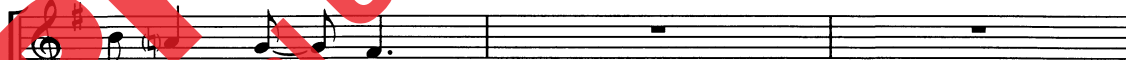


Those mu - si - cians!\_ It's for sure they're

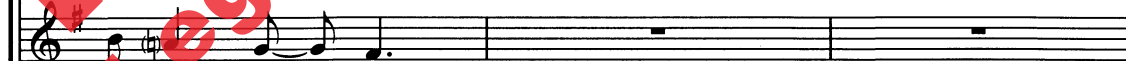


Those mu - si - cians!\_ It's for sure they're

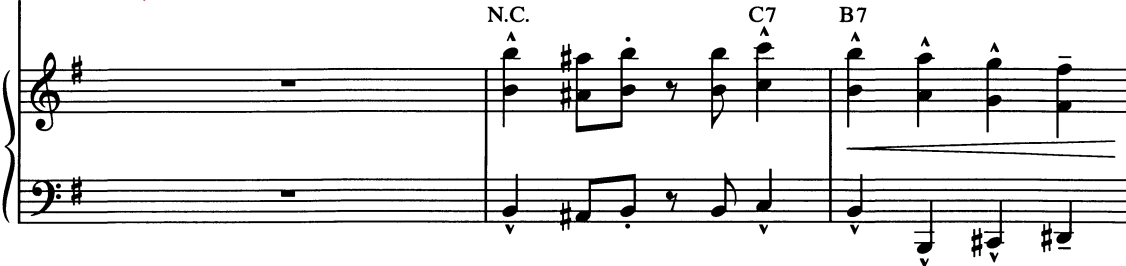
63 Am Am/G F#m7(b5) B7



on a mis - sion!



on a mis - sion!



N.C. C7 B7

69

*f*

Let there be no dis - cus - sion! Play it loud with hot per-cus - sion!

*f*

Let there be no dis - cus - sion! Play it loud with hot per-cus - sion!

69

Em Em/D C7 B7 Em Em/D C7 B7

*f*

73

*Spoken solo  
(or small group)*

Danc-in' to that mu-sic they\_ call Rag - time! \_\_\_\_\_ Now,

Danc-in' to that mu-sic they\_ call Rag - time! \_\_\_\_\_

73

Em Em/D C7 B7 C7

77

*(end solo) (All)*

hear me, broth-er, there's\_ no oth - er! Rag - time! \_\_\_\_\_

Rag - time! \_\_\_\_\_

77

B7

81

(All)

Musical staff with treble clef, key signature of one sharp (F#), and a whole rest.

*Spoken solo (or small group)*

*(end solo)*

It's Rag - time! \_\_\_\_\_

Musical staff with treble clef, key signature of one sharp (F#), and notes: quarter note G4, quarter note A4, quarter note B4, quarter note C5, quarter note B4, quarter note A4, quarter note G4, quarter note F#4, quarter note E4, quarter note D4, quarter note C4.

Shake those sass-y

chas-sis!

It's Rag - time! \_\_\_\_\_

81

Em

Piano accompaniment for measures 81-84. Treble clef, key signature of one sharp (F#). Bass clef, key signature of one sharp (F#). Includes chords and rhythmic patterns.

85

(opt. div.)

Musical staff with treble clef, key signature of one sharp (F#), and notes: quarter note G4, quarter note A4, quarter note B4, quarter note C5, quarter note B4, quarter note A4, quarter note G4, quarter note F#4, quarter note E4, quarter note D4, quarter note C4.

Rag - time! \_\_\_\_\_

Rag time! \_\_\_\_\_

Musical staff with treble clef, key signature of one sharp (F#), and notes: quarter note G4, quarter note A4, quarter note B4, quarter note C5, quarter note B4, quarter note A4, quarter note G4, quarter note F#4, quarter note E4, quarter note D4, quarter note C4.

Rag - time! \_\_\_\_\_

Rag - time! \_\_\_\_\_

85

C7

E7

Piano accompaniment for measures 85-88. Treble clef, key signature of one sharp (F#). Bass clef, key signature of one sharp (F#). Includes chords and rhythmic patterns.

Empty musical staves for vocal or instrumental parts.

N.C.

B7

E

Piano accompaniment for measures 89-92. Treble clef, key signature of one sharp (F#). Bass clef, key signature of one sharp (F#). Includes chords and rhythmic patterns.

8<sup>vb</sup>



BASS/GUITAR/DRUMS\*

In two (♩=108)

Drums: ensemble

B7 C7

*f*

5 B7 C7 B7 C7 B7

9 *Drums: pattern*  
Em Em/D C7 B7 Em Em/D C7 B7  
*mf* (sim.)

13 *Drums: ens.*  
Em Em/D C7 B7 Em Em/D C7 B7

17 *pattern*  
Em Em/D C7 B7 Em Em/D C7 B7

21 *Drums: ens.* *fill*  
Em Em/D C7 B7 Em E7

25 *pattern* *ens.*  
Am Am/G F#m7(b5) B7 Em E7

29 *pattern* *ens.* *fill* *ens.* *fill*  
Am Am/G F#m7(b5) B7 N.C. C7 B7

35 *pattern*  
Em Em/D C7 B7 Em Em/D C7 B7

39 *Drums: ensemble* *fill*  
Em Em/D C7 B7 Em B7

\*Bass: Play the part as written.

Guitar: Play ad lib., using the chord symbols as a guide.

Drums: The basic pattern is quarter notes on hi-hat, and the rhythm of the bass on bass drum.

43 *pattern\**  
 Em Em/D C7 B7 Em Em/D C7 B7

47 *Drums: ens.*  
 Em Em/D C7 B7 Em C7 B7 *fill*

51 *pattern\**  
 Em Em/D C7 B7 Em Em/D C7 B7

55 *Drums: ens.*  
 Em Em/D C7 B7 Em B7(b13) Em *mf*

59 *pattern*  
 Am Am/G F#m7(b5) B7 *ens.* Em E7

63 *Drums: ens.*  
 Am Am/G F#m7(b5) B7 N.C. C7 B7 *Drums: fill*

69 *pattern*  
 Em Em/D C7 B7 Em Em/D C7 B7

73 Em Em/D C7 B7 C7

77 *Drums: ens.* *pattern*  
 B7

81 *ens.* *fill* *pattern*  
 Em

85 *fill* *pattern* *ens. to end*  
 C7 E7 B7 E

\* The pattern from mm. 43-58 is quarter notes on ride cymbal, beats two and four on snare drum and the rhythm of the bass on bass drum.

**Preview Only**  
Legal Use Requires Purchase



[alfred.com](http://alfred.com)