

TABLE OF CONTENTS	VOLUME II	PAGE
37. The Grand Staff and Middle C		4
38. Steps, Leaps and Intervals		5
39. The Interval of a Prime and Second and the Score		6
40. Score Reading		7
Review of Lessons 37-40		8
41. The Interval of a Third and Stem Direction		9
42. The System		10
43. The Interval of a Fourth		11
44. Harmony and the Alto and Soprano Parts		12
Review of Lessons 41-44		13
45. The Interval of a Fifth and the Tenor and Bass Parts		14
46. Voice and Harmony Identification		15
47. The Interval of a Sixth		16
48. Counterpoint		17
Review of Lessons 45-48		18
49. The Interval of a Seventh and Voice Part Reading		19
50. Imitation		20
51. The Octave (Interval of an Eighth)		21
52. The Canon		22
Review of Lessons 49-52		23
53. The Half Step and Accidental Signs		24
54. The Sharp Sign		25
55. More Score Reading		26
56. The Flat Sign		27
Review of Lessons 53-56		28
57. The Natural Sign		29
58. Music Story V		30
59. More About Accidentals		31
60. The Whole Step and Enharmonic Pitches		32
Review of Lessons 57-60		33
61. Scales		34
62. Constructing Major Scales and the C Major Scale		35
63. The Tonic Note and Key Signatures		36
64. The Key of C Major and the $\frac{6}{8}$ Time Signature		37
Review of Lessons 61-64		38
65. The Key of G Major and Counting in $\frac{6}{8}$ Time		39
66. The Keys of G, D and A Major and $\frac{6}{8}$ Time Counted in Two		40
67. The Key of F Major and $\frac{2}{2}$ or C Time Signature		41
68. The Keys of F, B \flat and E \flat Major and Counting in $\frac{2}{2}$ or C Time		42
Review of Lessons 65-68		43
69. Chords and Triads		44
70. Major Triads		45
71. The Primary Major Triads and Chord Symbols		46
72. The Minor Scale		47
Review of Lessons 69-72		48

37. THE GRAND STAFF AND MIDDLE C

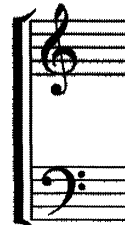
The **GRAND STAFF** allows a performer to read music on the **TREBLE** and **BASS CLEF STAVES*** at the same time.

CURVED BRACKET and BAR LINE



The **CURVED BRACKET** is used for music read by **KEYBOARDISTS**.

STRAIGHT BRACKET and BAR LINE

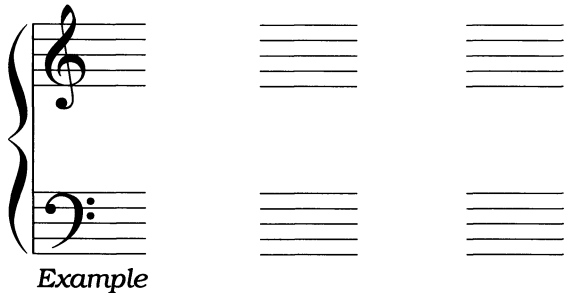


The **STRAIGHT BRACKET** is used for music read by **SINGERS and INSTRUMENTALISTS**.

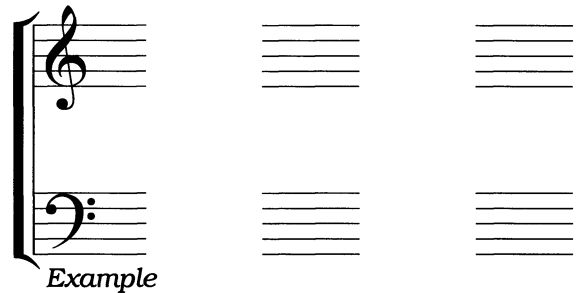
* Staves - Plural of staff

DIRECTIONS:

1 Draw two **CURVED BRACKETS** to form **GRAND STAVES** on the left and two **STRAIGHT BRACKETS** to form **GRAND STAVES** on the right. 2 Include the **BAR LINES** and **CLEF SIGNS**.

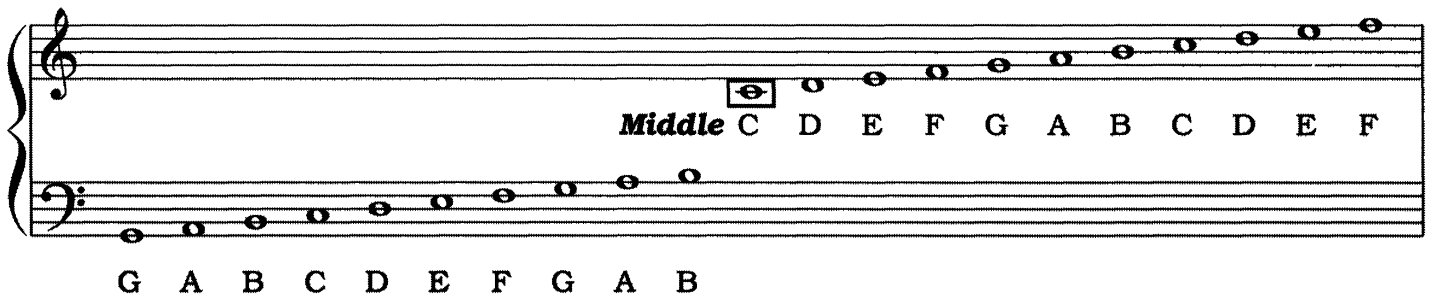


Example

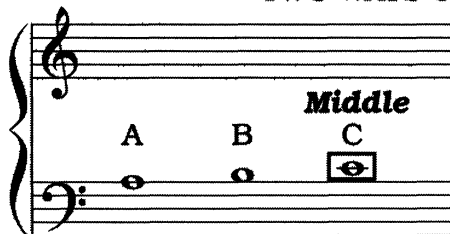


Example

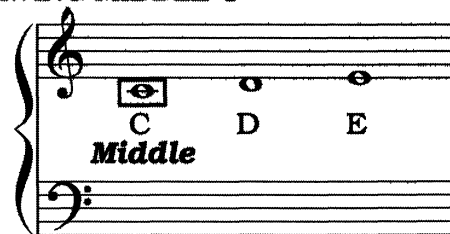
THE GRAND STAFF COMPLETE



TWO WAYS OF DRAWING MIDDLE C



From the **BASS CLEF STAFF**



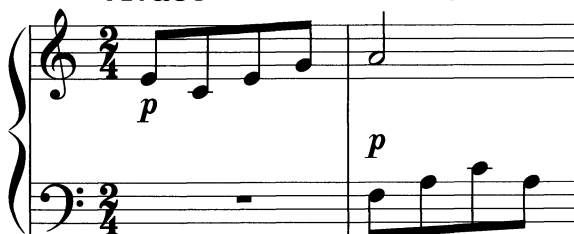
From the **TREBLE CLEF STAFF**

DIRECTIONS:

Circle the **MIDDLE Cs**.

POP THAT CORN

Vivace McDonald



SING OUT WITH JOY

Allegro Moore

