

FUM, FUM, FUM/PAT-A-PAN

Three-Part Mixed, with optional instruments

Catalonian and French Carols
Arranged by MARY VAL MARSH

Approximate performance time: 1:30

With crisp vitality ♩ = 95-100

gva

PIANO

I

II

III

IV (opt.)

On De-cem-ber twen-ty-five sing *fum, fum, fum! On De-cem-ber twen-ty-five sing

*Fum, fum, fum!

*Fum, fum, fum!

* Pronounced "foom". The word suggests the strumming of guitars and should be sung percussively, with emphasis on the "m" sound.

p

Fum, fum, fum. For up - on this day was born a ho - ly babe at break of morn. In a

fum, fum, fum! On this day a babe was born.

Fum, fum, fum! On this day a babe was born.

Fum, fum, fum! On this day a babe was born.

II

cold and lone-ly man-ger lay a ti - ny lit - tle stran-ger, fum, fum, fum!

p

In a lone - ly man-ger, fum, fum, fum!

p

In a man-ger lay a ti - ny lit - tle stran-ger, fum, fum, fum!

p

In a lone - ly man-ger, fum, fum, fum!

III (soft roll)

p

a tempo 16

Wil-lie, bring your lit-tle drum, your

Wil-lie, bring your drum, your

melody

Wil-lie, bring your lit-tle drum, Rob-in, get your

melody

Wil-lie, bring your lit-tle drum, Rob-in, get your

16

a tempo

mel. 20

flute and come; play-ing on your flute and drum. Tu-re-lu-re - lu! Pat-a-pat-a-

flute and come; play-ing on your flute and drum. Tu-re-lu-re - lu! Pat-a-pat-a-

flute and come; play - ing pat-a-pan; tu-re-lu,

flute and come; play - ing drum, pat-a-

20

(mel.)

pan! Play your drum for Christ-mas day.

pan! Play-ing on your flute and drum for a hap-py Christ-mas day.

(mel.)

pat-a-pan! Play-ing on your flute and drum for a hap-py Christ-mas day.

pan! Play - ing drum on Christ-mas day.

28

28

34
mf

Thank we all for

Thank we all for hol - i - days, sing

34
mf

hol - i - days. Thank we all for

fum, fum, fum! Thank we all for hol - i - days, sing

mf
Tu - re - lu - re, na - a - pat - a - pan!

mf
Fum, fum, fum!

38

hol - i - days. Now we all with voic - es sing, and play the
 fum, fum, fum! Now we all with voic - es sing, and play the
 Tu - re - lu - re, pat - a - pat - a - pan! Now we all with voic - es sing, and play the
 Fum, fum, fum! Now we all with voic - es sing, and play the

38

in - stru - ments we bring, as we cel - e - brate the glo - ry of the
 in - stru - ments we bring. Cel - e -
 in - stru - ments we bring. Sing the glo - ry of the
 in - stru - ments we bring. Cel - e -

43

won-drous Christ-mas sto-ry, fum, fum, fum! Fum, fum, fum!

brate the sto-ry, fum, fum, fum! Fum, fum,

won-drous Christ-mas sto-ry, fum, fum, fum! Tu-re-lu-re, pat-a-pat-a-

brate the sto-ry, fum, fum, fum! Tu-re-lu-re, pat-a-pat-a-

7

43

senza rit. *molto rit.* *div.* *go to "n" on beat 3*

Fum, fum, fum! Tu-re-lu! Pat-a-pan!

fum, fum, fum! Tu-re-lu! Pat-a-pan!

pan! Tu-re-lu-re-lu, tu-re-lu! Pat-a-pan!

pan! Tu-re-lu-re-lu, tu-re-lu! Pat-a-pan!

senza rit. *molto rit.*

* Most of Part I should sing the B-natural, to emphasize the major chord, and because Part III is singing the D.
SV9893

Flute, Recorder or Bells

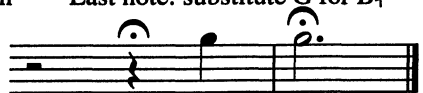


Recorder or Bells simplified (alternate) part

Substitute:

for each 5-note ascending pattern

Last note: substitute G for B \flat



Drum (Medium - high pitched)

Musical notation for Drum (Medium - high pitched). The score consists of five staves. The first staff starts with a 4/4 time signature and includes measures 5, 11, and 16. Measure 16 is marked 'a tempo'. The second staff contains a series of rests. The third staff starts with measure 28 and includes measure 2. The fourth staff starts with measure 34 and includes measure 38. The fifth staff starts with measure 43 and includes measure 3. The notation includes various time signatures (4/4, 3/4, 2/4) and rests.

Tambourine

Musical notation for Tambourine. The score consists of six staves. The first staff starts with a 4/4 time signature and includes the markings 'Tap', 'Shake', and 'Tap'. The notation uses 'T' for Tap and 'S' for Shake. The second staff includes measure 5. The third staff includes measure 11. The fourth staff includes measure 16 and measure 28. The fifth staff includes measure 34 and measure 38. The sixth staff includes measure 43 and is marked 'molto rit.' and '(lightly)'. The notation includes various time signatures (4/4, 3/4, 2/4) and rests.

Preview Only
Legal Use Requires Purchase



alfred.com