

TABLE OF CONTENTS

INTRODUCTION	page 3
JAZZ IMPROVISATION TERMS	page 36
TENOR MADNESS	pages 4–7
HEAD, EXAMPLE IMPROVISATION, IMPROVISED SOLO, HEAD	TRACK 1
HEAD, 6 CHORUSES, HEAD	TRACK 2
KILLER JOE	pages 8–11
HEAD, EXAMPLE IMPROVISATION, IMPROVISED SOLO, HEAD	TRACK 3
HEAD, 2 CHORUSES, HEAD	TRACK 4
BYE, BYE, BLACKBIRD	pages 12–15
HEAD, EXAMPLE IMPROVISATION, IMPROVISED SOLO, HEAD	TRACK 5
HEAD, 2 CHORUSES, HEAD	TRACK 6
TAKE THE “A” TRAIN	pages 16–19
HEAD, EXAMPLE IMPROVISATION, IMPROVISED SOLO, HEAD	TRACK 7
HEAD, 2 CHORUSES, HEAD	TRACK 8
SOFTLY, AS A MORNING SUNRISE	pages 20–23
HEAD, EXAMPLE IMPROVISATION, IMPROVISED SOLO, HEAD	TRACK 9
HEAD, 2 CHORUSES, HEAD	TRACK 10
SECRET LOVE	pages 24–27
HEAD, EXAMPLE IMPROVISATION, IMPROVISED SOLO, HEAD	TRACK 11
HEAD, 2 CHORUSES, HEAD	TRACK 12
SPEAK LOW	pages 28–31
HEAD, EXAMPLE IMPROVISATION, IMPROVISED SOLO, HEAD	TRACK 13
HEAD, 2 CHORUSES, HEAD	TRACK 14
COTTONTAIL	pages 32–35
HEAD, EXAMPLE IMPROVISATION, IMPROVISED SOLO, HEAD	TRACK 15
HEAD, 2 CHORUSES, HEAD	TRACK 16

C INSTRUMENTS

HEAD

TENOR MADNESS


LISTEN AND ANALYZE HEAD

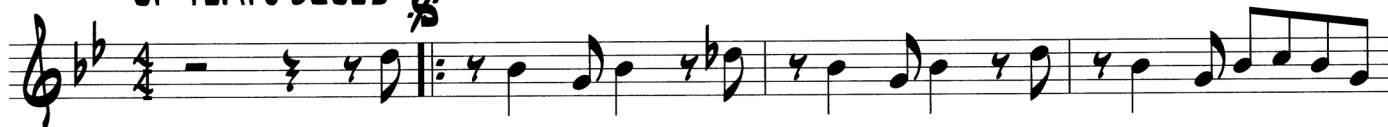
Track 1
JAZZ DEMO

PLAY THE HEAD

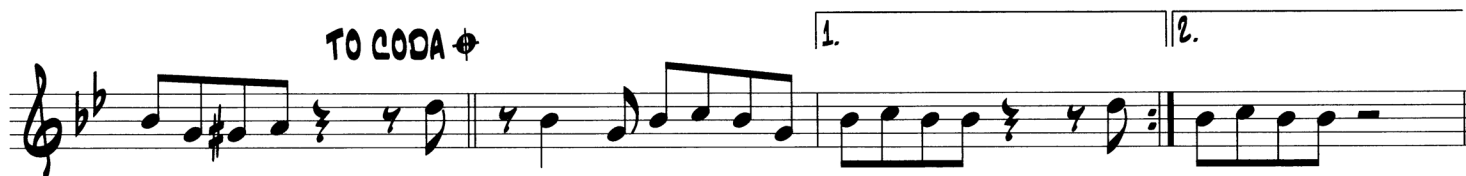
Track 2
PLAY ALONG

BY SONNY ROLLINS

UP-TEMPO BLUES 



TO CODA 



C INSTRUMENTS

LICKS AND TRICKS

Lick #1 is a simple blues-style line. Lick #2 is a blues scale riff, and Lick #3 is a rolling rhythmical pattern outlining the basic chord progression.

1.) $Bb7$ $Eb7$ $Bb7$

Musical notation for Lick #1: A single staff in G-flat major (two flats) and 4/4 time. It consists of three measures. The first measure has a $Bb7$ chord and contains a quarter note G-flat, a quarter note A-flat, and a quarter rest. The second measure has an $Eb7$ chord and contains a quarter note G-flat, a quarter note A-flat, a quarter note B-flat, and a quarter note C. The third measure has a $Bb7$ chord and contains a quarter note G-flat, a quarter note A-flat, a quarter note B-flat, and a quarter note C. The piece ends with a double bar line.

2.) $Bb7$ $Eb7$ $Bb7$

Musical notation for Lick #2: A single staff in G-flat major (two flats) and 4/4 time. It consists of six measures. The first measure has a $Bb7$ chord and contains a triplet of eighth notes: G-flat, A-flat, B-flat. The second measure has an $Eb7$ chord and contains a quarter note G-flat, a quarter note A-flat, a quarter note B-flat, and a quarter note C. The third measure has a $Bb7$ chord and contains a quarter note G-flat, a quarter note A-flat, a quarter note B-flat, and a quarter note C. The fourth measure has an $Eb7$ chord and contains a quarter note G-flat, a quarter note A-flat, a quarter note B-flat, and a quarter note C. The fifth measure has a $Bb7$ chord and contains a quarter note G-flat, a quarter note A-flat, a quarter note B-flat, and a quarter note C. The sixth measure has a $Bb7$ chord and contains a quarter note G-flat, a quarter note A-flat, a quarter note B-flat, and a quarter note C. The piece ends with a double bar line.

3.) $Bb7$ $Eb7$ $Bb7$

Musical notation for Lick #3: A single staff in G-flat major (two flats) and 4/4 time. It consists of four measures. The first measure has a $Bb7$ chord and contains a quarter note G-flat, a quarter note A-flat, a quarter note B-flat, and a quarter note C. The second measure has an $Eb7$ chord and contains a quarter note G-flat, a quarter note A-flat, a quarter note B-flat, and a quarter note C. The third measure has a $Bb7$ chord and contains a quarter note G-flat, a quarter note A-flat, a quarter note B-flat, and a quarter note C. The fourth measure has a $Bb7$ chord and contains a quarter note G-flat, a quarter note A-flat, a quarter note B-flat, and a quarter note C. The piece ends with a double bar line.

SCALES AND CHORDS

$Bb7$ $Eb7$ $Bb7$

Musical notation for Scale 1: A single staff in G-flat major (two flats) and 4/4 time. It consists of three measures of a scale. The first measure has a $Bb7$ chord and contains a quarter note G-flat, a quarter note A-flat, a quarter note B-flat, and a quarter note C. The second measure has an $Eb7$ chord and contains a quarter note G-flat, a quarter note A-flat, a quarter note B-flat, and a quarter note C. The third measure has a $Bb7$ chord and contains a quarter note G-flat, a quarter note A-flat, a quarter note B-flat, and a quarter note C. The piece ends with a double bar line.

$Eb7$ $Bb7$

Musical notation for Scale 2: A single staff in G-flat major (two flats) and 4/4 time. It consists of two measures of a scale. The first measure has an $Eb7$ chord and contains a quarter note G-flat, a quarter note A-flat, a quarter note B-flat, and a quarter note C. The second measure has a $Bb7$ chord and contains a quarter note G-flat, a quarter note A-flat, a quarter note B-flat, and a quarter note C. The piece ends with a double bar line.

$Cmi7$ $F7$ $Bb7$

Musical notation for Scale 3: A single staff in G-flat major (two flats) and 4/4 time. It consists of three measures of a scale. The first measure has a $Cmi7$ chord and contains a quarter note G-flat, a quarter note A-flat, a quarter note B-flat, and a quarter note C. The second measure has an $F7$ chord and contains a quarter note G-flat, a quarter note A-flat, a quarter note B-flat, and a quarter note C. The third measure has a $Bb7$ chord and contains a quarter note G-flat, a quarter note A-flat, a quarter note B-flat, and a quarter note C. The piece ends with a double bar line.

DISCOGRAPHY

TENOR MADNESS
Sonny Rollins - *Tenor Madness* - OJC 124

C INSTRUMENTS

KILLER JOE

HEAD

LISTEN AND ANALYZE HEAD

Track 3
JAZZ DEMO

PLAY THE HEAD

Track 4
PLAY ALONG

BY BENNY GOLSON

JAZZ SHUFFLE

INTRO

4

TO CODA ♦