

FINNAN HADDIE

VIJAY SINGH

Young Tom was a red haired Findon lad,
He worked out of the harbor,
At night when he lay down in his bed,
 he dreamt of kippers an' beer.

At dawn when the mist lay o'er the ground,
Young Tom would go out fishin',
He'd dry his catch out in the sun for all the laddies to see.

Finnan Haddie was a fav'rite dish;
Made of milk an' made of fish.
Codfish taken from the briny sea
An' we'll all eat Finnan Haddie.

Now, Tom had his eye on many things
An' first of these was Maddie.
She came from the village wearin' green attractin' all the laddies.

So Tom went an' bought a brand new coat,
In hopes of 'ttractin' Maddie
But when she saw him, she replied "Can I buy some Finnan Haddie?"

Finnan Haddie was a fav'rite dish;
Made of milk an' made of fish.
Codfish taken from the briny sea
An' we'll all eat Finnan Haddie.

Heavin' the nets up, Heigh ho, feelin' the North wind blow.
Feelin' the sting of sea spray high an' low.
Heavin' the nets up, Heave no, codfish again to show.
Load up the catch an' tide, it's home we go!

Now Tom was convinced of one sure thing,
He had to marry Maddie.
He proposed on one knee but she replied
"You s'mell like Finnan Haddie!"

Finnan Haddie was a fav'rite dish;
Made of milk an' made of fish.
Codfish taken from the briny sea
An' we'll all eat Finnan Haddie.

for Male Ensemble Northwest
FINNAN HADDIE
from Celtic Songs

TTBB, with recorder and guitar or optional piano

Words and Music by
VIJAY SINGH

Performance time: 2:26

Playfully ♩ = 112-120

RECORDER

Recorder staff with musical notation, starting with a *mf* dynamic marking.

Playfully ♩ = 112-120

Play piano if no guitar

PIANO
(optional)

Piano accompaniment staff with chords G, C, and D, starting with a *mf* dynamic marking.

Continuation of piano accompaniment with chords G, C, and D.

RECORDER

SOLO

Ad lib. Solo
mp

- 1. Young
- 2. Now

Recorder solo section with piano accompaniment, including a *SOLO* marking and a *SOLO* section for the recorder.

© 1996 BELWIN-MILLS PUBLISHING CORP. (ASCAP)
All Rights Assigned to and Controlled by ALFRED MUSIC PUBLISHING CO., INC.
All Rights Reserved. Printed in USA.

7

Tom was a red haired Fin - don lad, he worked out of the har - bor. At
Tom had his eye on ma - ny things, an' first of these was Mad - die, she

7

G C D

mp

night when he lay down in his bed, — he dreamt of kip - pers and beer
came from the vil - lage wear - in' green, — at - trac - tin' all the lad - dies.

G C D G

SOLO

mf

At dawn when the mist lay o'er the ground, young
So Tom went an' bought a brand new coat, in

T T *mf* *mp*

Hm hm

B B *mf* *mp*

G



Tom would go out fish-in', he'd dry his catch out in the sun for
hopes of 'trac - tin' Mad-die. But when she saw him, she re - plied, "Can I



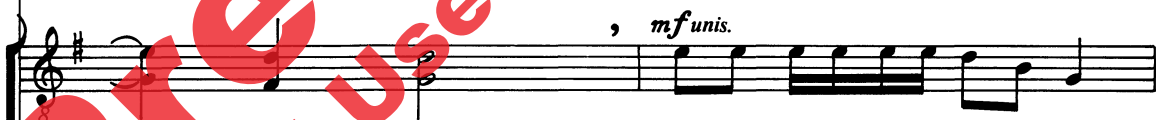
hm hm Hm hm



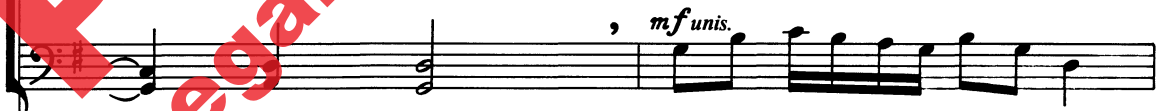
C D G C



all the lad-dies to see.
buy some Fin - nan Had-die?"



hm hm Fin - nan Had-die was a fav-'rite dish;



D G 16 C G



T
T

made of milk an' made of fish. Cod - fish tak - en from the brin - y

B
B

C G C G

RECORDER *(pick-up note on repeat only)*

T
T

sea, an' we'll all eat Fin-nan Had-die.---

B
B

Em D C D G

23 *f*

1. Heav - in' the nets up, heigh ho!
 2. Heav - in' the nets up, heave ho!

f *div.*

Ho!

G D/F# 23 Em B

f

Feel - in' the north wind blow. Feel - in' the sting of sea spray
 Cod - fish a - gain to show. Load up the catch an' ride, it's

unis.

Em B G D

1. high an low. 2. home we go!

1. G Am7 B 2. G Am B

RECORDER

29

Musical notation for the Recorder part, starting with a treble clef, a key signature of one sharp (F#), and a 2/4 time signature. The melody begins with a quarter rest, followed by a quarter note G4, and continues with a series of eighth and sixteenth notes.

Musical notation for the vocal part, starting with a treble clef, a key signature of one sharp (F#), and a 2/4 time signature. The vocal line consists of a whole note chord G4.

We go!

Musical notation for the bass vocal part, starting with a bass clef, a key signature of one sharp (F#), and a 2/4 time signature. The bass line consists of a whole note chord G3.

D7 29 G

Piano accompaniment musical notation, starting with a grand staff (treble and bass clefs), a key signature of one sharp (F#), and a 2/4 time signature. The right hand features a rhythmic pattern of eighth notes with chords, and the left hand provides a simple bass line. A box containing the number '29' is placed above the first measure of the right hand.

Musical notation for the Recorder part, continuing the melody from the previous system.

Musical notation for the vocal part, consisting of a whole rest in the treble clef.

Musical notation for the bass vocal part, consisting of a whole rest in the bass clef.

G C D G F

Piano accompaniment musical notation, continuing the rhythmic pattern with chords G, C, D, G, and F in the right hand.

35 Slower

rit.

rit. *molto legato*
mp unis.

Now Tom was con-vinced of one sure thing, he had to mar-ry Mad-die! He pro-

molto legato
mp unis.

35 Slower

G

rit. (*Let chord ring/fade*)

molto rit.

molto rit. *Spoken falsetto (imitating woman)*

posed on one knee but she re-plied, — “You smell like Finnan Haddie!”

molto rit.

39

a tempo (con giusto!)

mf

a tempo (con giusto!)

f

Fin - nan Had-die was a fav-'rite dish; made of milk an' made of fish

f

39

(con giusto!)

C

G

C

G

a tempo

unis.

anis.

Cod-fish tak-en from the brin-y sea, an' we'll

unis.

anis.

C

G

Em

an' we'll all eat Fin - nan
cresc.

all eat Fin - nan Had-die, an' we'll all eat Fin - nan,
cresc.

an' we'll all eat Fin - nan

C D G Am G/B C6 D7

cresc.

Had-die!
rit. ff

Fin - nan Had-die was a fav-'rite dish, a fav-'rite Fin - nan Had-die!
rit. ff

Had-die!

G
f rit. ff

RECORDER

Playfully ♩ = 112-120

Preview Only
 Legal Use Requires Purchase

