

FOREWORD

Teacher and Parents:

LESSONS, Level Two, from the David Carr Glover METHOD for PIANO reviews the basic concepts presented in LESSONS, Level One. New concepts are introduced and reinforced sequentially through the use of original compositions, folk songs and the sounds of today. This book, combined with the recommended supplementary materials, continues to assist the student in developing the ability to read and perform musically through interval recognition, sight reading and ear training.

The student will continue to experience the basic elements of improvisation as the creative activities, EXPLORE, are presented.

Supplementary materials are carefully correlated and coded with the LESSONS book to provide reinforcement of all concepts.

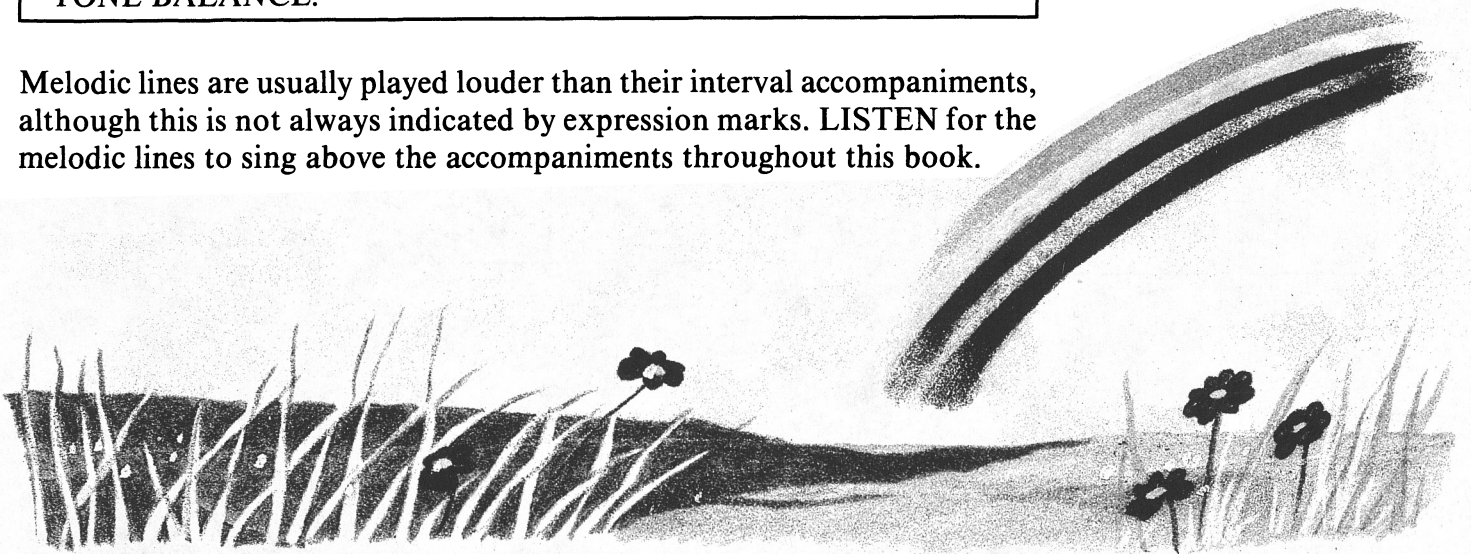
The David Carr Glover METHOD for PIANO has been created to provide an enjoyable program of piano instruction which is pedagogically sound. David Carr Glover and his collaborators wish you a happy, successful musical journey!

Supplementary materials correlated with
LESSONS, Level Two, from the
David Carr Glover METHOD for PIANO

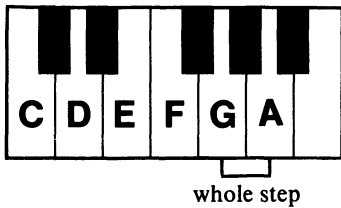
THEORY	Introduce with Page 4
PERFORMANCE	Page 6
SIGHT READING AND EAR TRAINING	Page 6
TECHNIC	Page 8

TONE BALANCE (Review)
 Many times one hand will play louder than the other. This is called **TONE BALANCE**.

Melodic lines are usually played louder than their interval accompaniments, although this is not always indicated by expression marks. LISTEN for the melodic lines to sing above the accompaniments throughout this book.



Play the interval of a 6th by moving UP a **WHOLE STEP** above the top key of the Five Finger Position.



Practice this **INTERVAL ACCOMPANIMENT** before playing "Prelude." Keep your eyes on the music. Do not look at your hands.



Memorize the above Interval Accompaniment, then play with your eyes closed.

What does Adagio mean? _____
 Key of _____, Key signature _____

PRELUDE

GLOVER - STEWART

Adagio

EXPLORE: Create a different sound. Change every E to E - flat and every A to A - flat.