

Contents

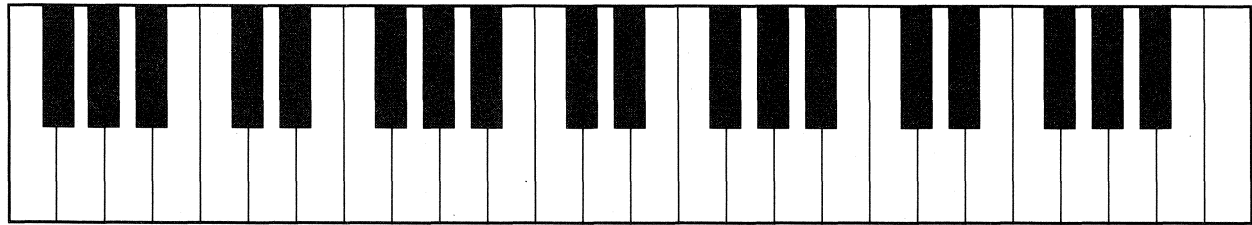
	Page
The Piano Keyboard: Black Keys	4
Low, Middle, High Sounds	6
Quarter Note, Half Note	8
Stem Direction	9
Bar Line, Double Bar, Repeat Sign,	10
Musical Leaves, Review	11
Rhythm Puzzles	12
Whole Note	13
Rhythm Fun: Quarter, Half, Whole Note	14
Music Alphabet	15
White Keys: C, D, E	16
White Keys: F, G, A, B	17
White Keys, Review	18
Middle C Position	19
Keyboards	21
Answers and Teacher's Listening Examples	22

Low, Middle, and High Sounds

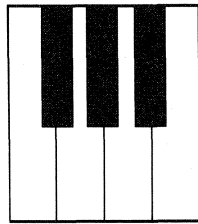
LOW sounds are to your LEFT on the keyboard.

MIDDLE sounds are in the MIDDLE of the keyboard.

HIGH sounds are to your RIGHT on the keyboard.



LOW ← ————— MIDDLE ————— → HIGH



6. At the keyboard on any group of **THREE BLACK KEYS** make sounds like

A.

A LION ROARING!



B.

a squirrel running up
a tree.

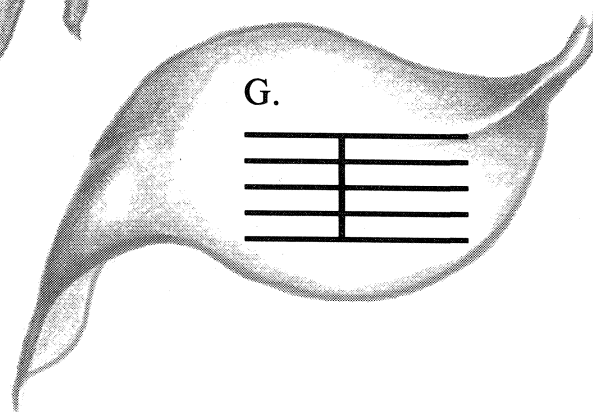
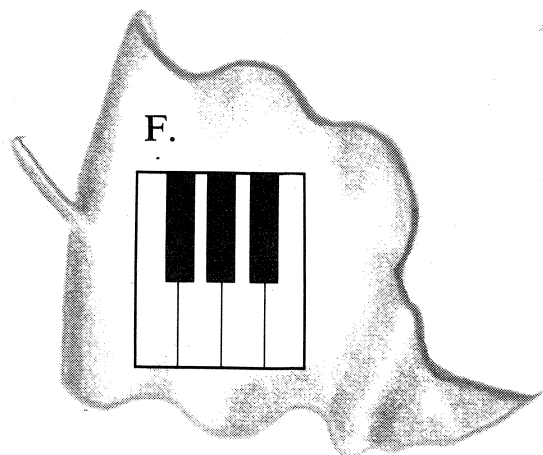
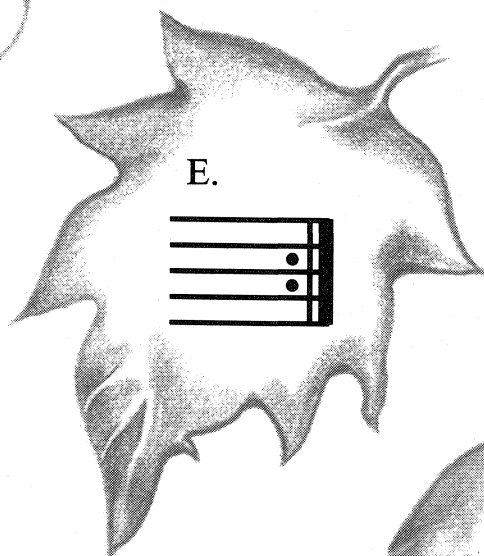
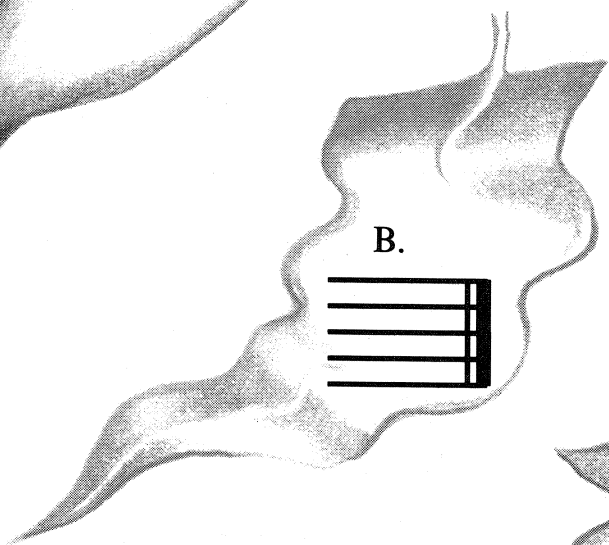
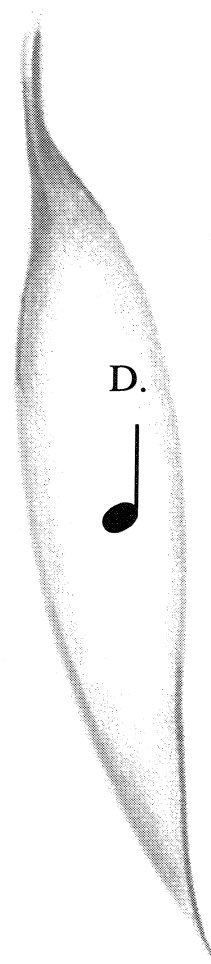
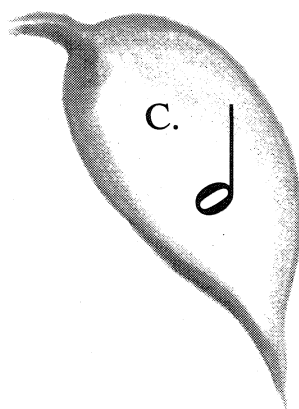
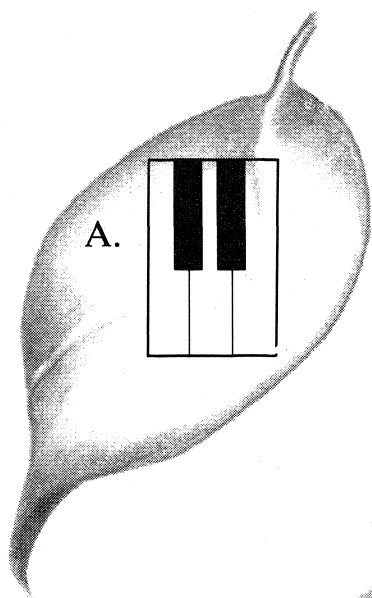


Use with pages 6-8, LESSONS, Pre-Reading Level.

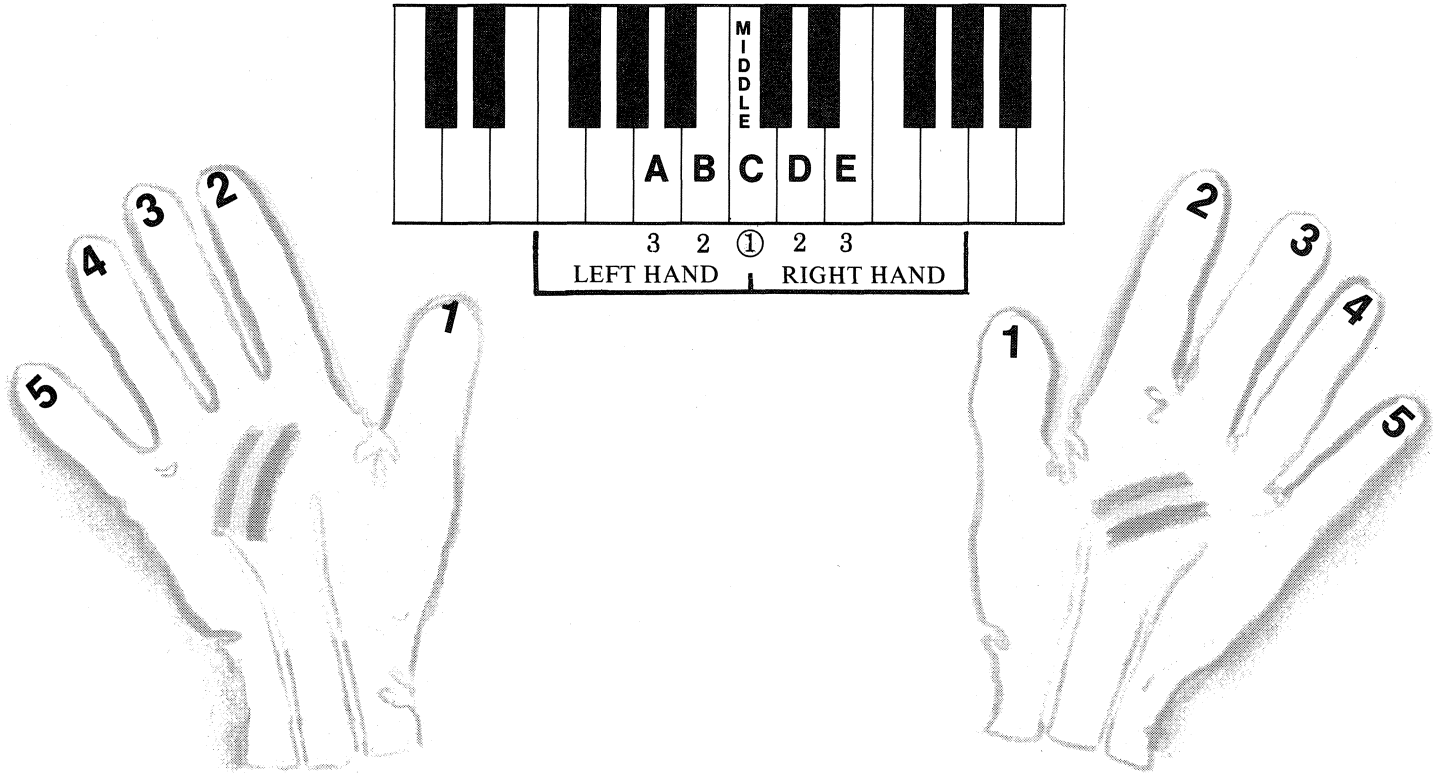
Musical Leaves (Review)

14. On the line after each definition, write the letter name of the leaf that contains the matching musical symbol.

Bar line _____	Two black keys _____	Double bar _____	Repeat sign _____
Quarter Note _____	Three black keys _____	Half note _____	



Middle C Position



35. Write in the letter names of the marked white keys.

RIGHT HAND

A. B. C.

LEFT HAND

D. E. F.