

## CONTENTS

### SECTION ONE

FAIREST LORD JESUS – As Written in a Hymnal . . . . .	5
How Hymns Are Notated in a Hymnal. . . . .	6
Basic Chorale Style . . . . .	7
DOXOLOGY – As Written in a Hymnal . . . . .	12
Basic Chorale Style. . . . .	12
WHEN MORNING GILDS THE SKIES – As Written in a Hymnal . . . . .	16
Basic Chorale Style. . . . .	17
ALL HAIL THE POWER – As Written in a Hymnal. . . . .	20
Basic Chorale Style . . . . .	21
COME, THOU ALMIGHTY KING – As Written in a Hymnal . . . . .	24
Basic Chorale Style. . . . .	25
HOW FIRM A FOUNDATION – As Written in a Hymnal . . . . .	28
Chords . . . . .	29
Basic Chorale Style . . . . .	30
Introductions . . . . .	32

### SECTION TWO

Review of Basic Chorale Style . . . . .	33
ALL HAIL THE POWER – As Written in a Hymnal. . . . .	35
The 6th Chord . . . . .	35
Full Chorale Style . . . . .	36
O GOD, OUR HELP – As Written in a Hymnal. . . . .	39
Full Chorale Style . . . . .	40
O WORSHIP THE KING – As Written in a Hymnal . . . . .	42
Accompaniment Style . . . . .	42
FAITH OF OUR FATHERS – As Written in a Hymnal . . . . .	43
The 9th, 11th, and 13th Chords . . . . .	43
Accompaniment Style . . . . .	44
MAJESTIC SWEETNESS SITS ENTHRONED – As Written in a Hymnal. . . . .	47
Accompaniment Style . . . . .	48
SAVIOUR, LIKE A SHEPHERD LEAD US – As Written in a Hymnal. . . . .	51
Accompaniment Style . . . . .	52
WHAT A FRIEND WE HAVE IN JESUS – As Written in a Hymnal. . . . .	58
Accompaniment Style . . . . .	59
ONWARD CHRISTIAN SOLDIERS – As Written in a Hymnal . . . . .	60

### SECTION TWO (Cont'd)

Accompaniment Style . . . . .	61
Summary . . . . .	62

### SECTION THREE

AMAZING GRACE . . . . .	63
STAND UP, STAND UP FOR JESUS . . . . .	64
SWEET BY AND BY . . . . .	65
THROW OUT THE LIFELINE . . . . .	66
LET THE LOWER LIGHTS BE BURNING . . . . .	67
BEULAH LAND . . . . .	68
THE OLD TIME RELIGION . . . . .	69
I LOVE TO TELL THE STORY. . . . .	70
ROCK OF AGES, CLEFT FOR ME . . . . .	71
O HAPPY DAY. . . . .	72
TRUST AND OBEY . . . . .	73
WE'RE MARCHING TO ZION . . . . .	74
REVIVE US AGAIN . . . . .	75
WHEN THE ROLL IS CALLED UP YONDER . . . . .	76
JESUS LOVES ME . . . . .	77
SHALL WE GATHER AT THE RIVER. . . . .	78
THERE SHALL BE SHOWERS OF BLESSING . . . . .	79
BLESSED ASSURANCE . . . . .	80
THE CHURCH IN THE WILDWOOD . . . . .	81
WHEN THEY RING THE GOLDEN BELLS. . . . .	82
JESUS LOVES THE LITTLE CHILDREN . . . . .	83
BLEST BE THE TIE THAT BINDS . . . . .	84
WHEN THE SAINTS GO MARCHING IN . . . . .	84
SOFTLY AND TENDERLY JESUS IS CALLING . . . . .	85
WONDERFUL PEACE. . . . .	86
HEAVENLY SUNSHINE . . . . .	87
WONDERFUL WORDS OF LIFE. . . . .	88
RING THE BELLS OF HEAVEN. . . . .	89
JUST AS I AM, WITHOUT ONE PLEA . . . . .	90
AM I A SOLDIER OF THE CROSS?. . . . .	90
LEANING ON THE EVERLASTING ARMS . . . . .	91
STANDING ON THE PROMISES. . . . .	92
SWEET HOUR OF PRAYER. . . . .	93
BRING THEM IN . . . . .	94
WHEN HE COMETH (JEWELS). . . . .	95
JESUS LOVES EVEN ME. . . . .	96

## Basic Chorale Style using the hymn Fairest Lord Jesus

In Basic Chorale Style, the right hand plays the soprano, alto and tenor voices usually on the treble clef staff. The left hand plays the bass voice almost always on the bass clef staff with the thumb, and adds a tone one octave lower played with the fifth finger.

Written:

The 'Written' notation shows four staves: Soprano, Alto, Tenor, and Bass. The key signature has one flat (B-flat) and the time signature is 4/4. The Tenor voice is written on the bass staff. Circled numbers 1 and 2 are placed above the first and second measures of the Soprano staff.

Played:

The 'Played' notation shows four staves: Soprano, Alto, Tenor, and Bass (In octaves). The Tenor voice is now written on the treble staff between the Soprano and Alto staves. The Bass staff includes an octave line below the staff. Circled numbers 1 and 2 are placed above the first and second measures of the Soprano staff.

You will note in the above example that though the tenor voice was moved to the right hand it was still played in the same position as given on the staff. However, when the tenor voice is in a position on the staff too far to reach with the right hand, move the tenor up one octave higher placing it on the treble staff between the soprano and alto voices.

Written:

The 'Written' notation shows a single staff with a circled number 11. The key signature has one flat and the time signature is 4/4.

Played:

The 'Played' notation shows a single staff with a circled number 11. The key signature has one flat and the time signature is 4/4. The tenor voice is now written on the treble staff between the soprano and alto voices.

# When Morning Gilds The Skies

## Basic Chorale Style

(A suggested introduction will be found on page 32.)

From the German  
Tr. by EDWARD CASWALL

JOSEPH BARNBY

Chord symbols for measures 1-14:

- 1: Dm7 sus4
- 2: G7
- 3: Am/C
- 4: D7
- 5: G
- 6: G
- 7: C/E
- 8: G7/B
- 9: C/E
- 10: G
- 11: C
- 12: F/A
- 13: C
- 14: F

Other chord symbols shown in the score include: C, C/E, F, Dm7, F/A, G7, Am7, Em7, D7/F#, D7 sus4, D7, G7/F, G7/D, F/C, Em/G, G7/F, C, D6, D7, G7/B, C7/Bb, G7, and C.

# SECTION TWO

## How To Play Hymns and Gospel Songs In Evangelistic Styles

### Review

Before beginning this section, let us review the principles presented in SECTION ONE.

1. In Basic Chorale Style double the bass note in the left hand in octaves. Play the tenor, alto and soprano notes with the right hand. Fill in the missing notes of the chord in the right hand whenever necessary.

Written:

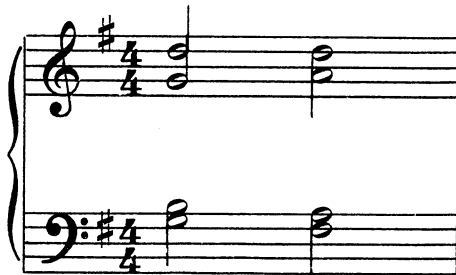


Played:

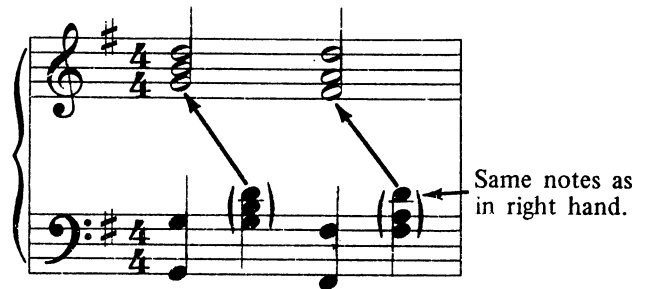


2. When there are half notes, dotted half notes and whole notes in the left hand after playing the octave, fill in the remaining beats with chords keeping the left hand moving at all times. Be careful to play identical chord notes in the left hand as found in the right hand.

Written:



Played:



3. When the right hand has a dotted quarter note followed by an eighth note, the left hand plays quarter notes. In the above example and the one below, the left hand chord position though an octave lower is the same as the right hand. This is preferred when possible, however, any position of the chord may be used.

Written:



Played:



\*For simplicity you can play only the soprano note C.