

FOREWORD

These 30 NOTE SPELLING LESSONS are for the reinforcement of the music fundamentals found in Primer Level and Level One of the David Carr Glover Piano Library. They present note spelling on the grand staff, leger lines and spaces, accidentals, and key location of notes.

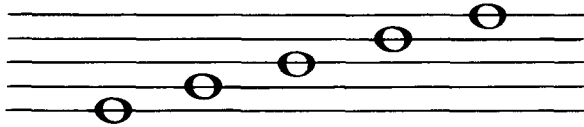
For further reinforcement of music fundamentals at this level of study the following music games published by Belwin-Mills Publishing Corp., created by Helen Wunnenberg and David Carr Glover are recommended. They are: Music Forte (Music Bingo), Music Match - Go, and Music Cross - Go.

CONTENTS

Lesson	Page
1. Line and Space Notes	3
2. Line and Space Number Names	4
3. Drawing Whole Notes on Lines and Spaces	5
4. Music Alphabet Letter Names	6
5. Clef Signs and the Grand Staff	7
6. Treble Staff Line Notes and Keys	8
7. Treble Staff Space Notes and Keys	9
8. Bass Staff Line Notes and Keys	10
9. Bass Staff Space Notes and Keys	11
10. Kinds of Notes and Stem Placement	12
11. Notes and Keys Above Bass Staff, Below Treble Staff	13
12. Grand Staff Line Notes and Keys	14
13. Grand Staff Space Notes and Keys	15
14. Note Spelling – Grand Staff	16
15. Sharps, Flats, and Naturals	17
16. Spelling and Drawing Accidentals	18
17. Note Spelling (Accidentals) – Grand Staff	19
18. Eighth Notes	20
19. Identify Kinds of Notes	21
20. Identify Kinds of Rests	22
21. Drawing Notes and Rests – Grand Staff	23
22. Note Spelling – Inner Leger Lines and Spaces	24
23. Note Spelling – Outer Leger Lines and Spaces	25
24. Key Signatures – Note Spelling	26
25. Drawing Specific Notes	27
26. Note Spelling – Intervals	28
27. Drawing Notes – Grand Staff	29
28. Matching Notes and Rests	30
29. Key Spelling and Drawing Notes	31
30. Note Spelling – Grand Staff	32

LESSON No. 1 - Line And Space Notes

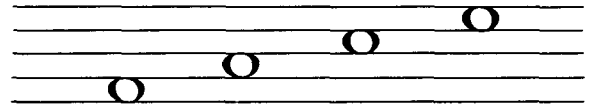
Notes are placed on the music staff with lines through them.



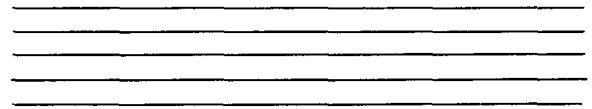
Copy the above line notes below.



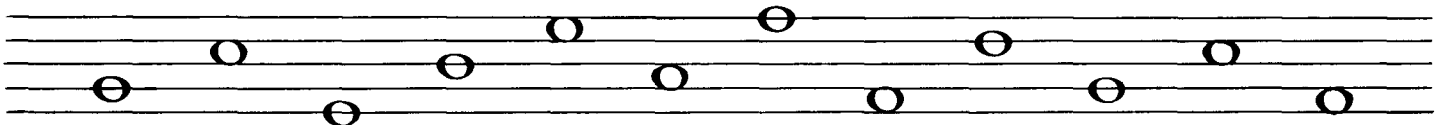
Notes are placed on the music staff in the spaces.



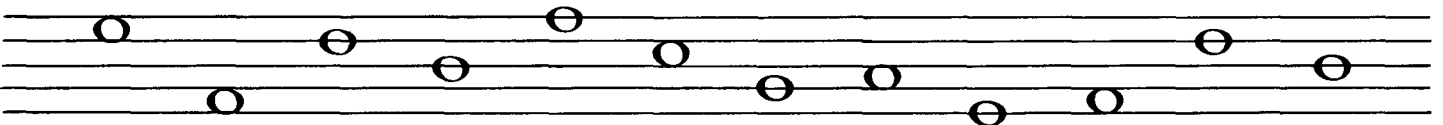
Copy the above space notes below.



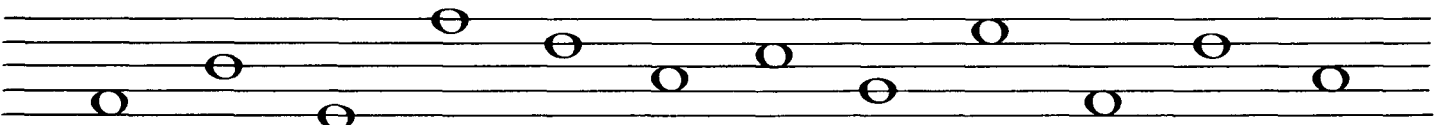
On the staves below are line and space notes. Write L for LINE notes and S for SPACE notes.



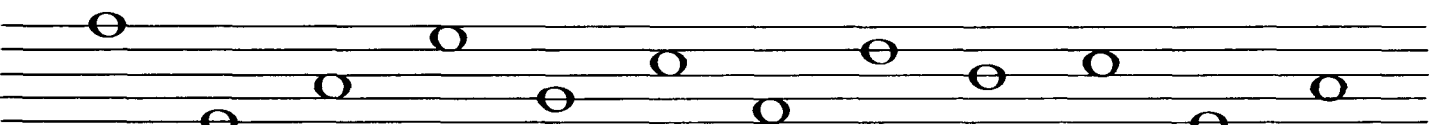
L S _ _ _ _ _ _ _ _



_ _ _ _ _ _ _ _ _ _



_ _ _ _ _ _ _ _ _ _



_ _ _ _ _ _ _ _ _ _