

# LET'S PLAY

1

With all holes OPEN – DO THE FOLLOWING:

Blow a note real HARD

Blow a note real EASY

Blow a note about in the MIDDLE

WHICH SOUND DO YOU LIKE BEST?

2

Now CLOSE the LEFT HAND THUMB and FIRST FINGER holes (there must be NO LEAKS) and Blow a note that sounds pretty.



THE NOTE YOU ARE PLAYING IS **B**

3

Play **B** four times **B B B B** (repeat several times)

4

Close the LEFT HAND THUMB and 1st and 2nd FINGER holes and play a note.



THIS NOTE IS **A**

Play **A A A** REST

5

Now Play **B B B** REST

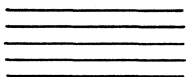
**A A A** REST

(repeat several times)

## READING MUSIC

### First Things To Know -

STAFF



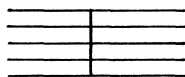
5 Lines and 4 Spaces

CLEF SIGN (Treble)



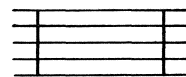
Placed at the beginning of each Staff

BAR



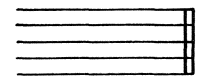
Divides Staff into measures

MEASURE



Space between two Bars

DOUBLE BAR



Marks the END of a Section




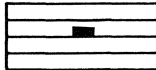

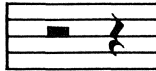

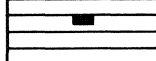
## NOTES and COUNTING

A NOTE means to PLAY

A REST means DON'T PLAY (silence)

NOTES

RESTS

QUARTER	—  →	1 count	← 	←	— QUARTER
HALF	—  →	2 counts	← 	←	— HALF
DOTTED HALF	—  →	3 counts	← 	←	—
WHOLE	—  →	4 counts	← 	←	— WHOLE



### Grandfather's Clock

1