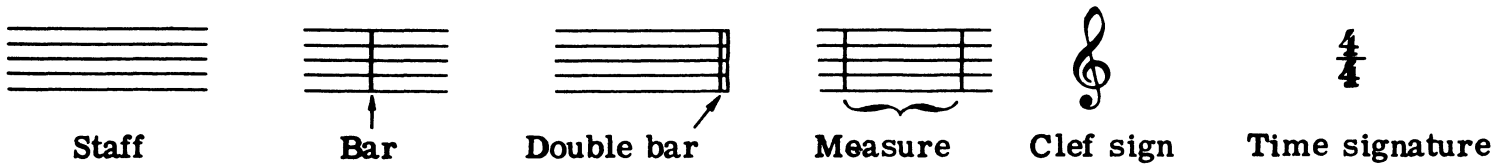
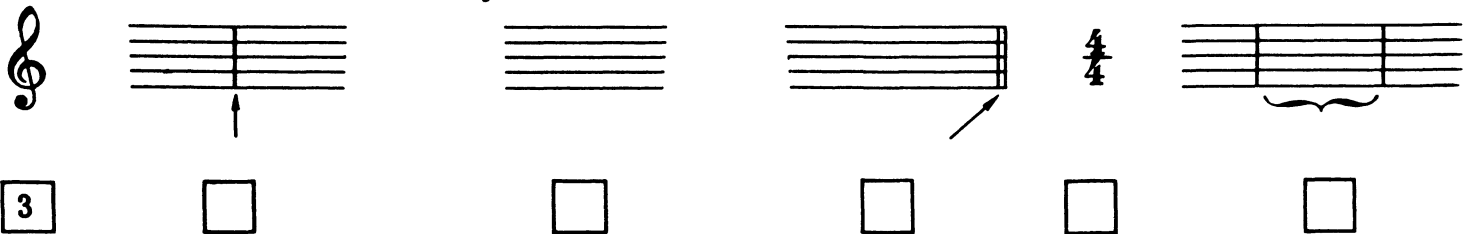


LESSON 1


You should know the following.

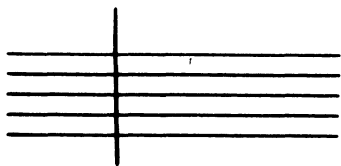


1 Match the symbols in the TOP line with their names.
The first one is done for you.

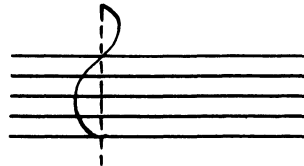


1-Staff; 2-Measure; 3-Clef sign; 4-Bar; 5-Time signature; 6-Double bar.

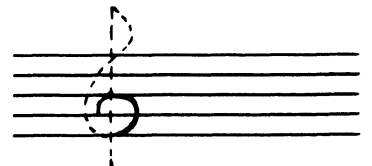
2 The Treble Clef sign () is usually found at the beginning of each staff of clarinet music.
There are 3 easy steps in learning to draw this sign.



a - Step 1-A straight line extending above and below the staff.



Step 2-A curved line that crosses the up and down line on the 4th line of the staff.



Step 3-A curved line touching the bottom line and the 3rd line as above.



b - Draw 3 lines as in step one above. Draw the 3 curved lines as in step 2 above. Complete the curve as in step 3 above. Draw 3 complete Treble Clef signs.