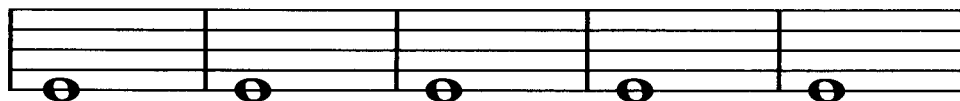


Lesson 12. Notes on Lines and Spaces

Name _____ Date _____ Grade _____

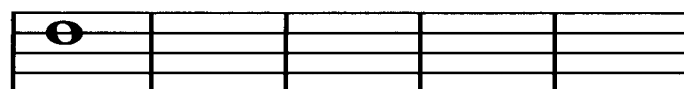
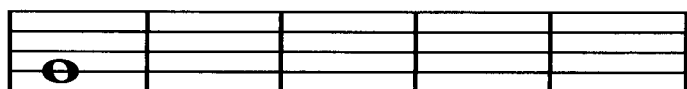
Here are five whole notes on the **FIRST** line (bottom line) of the staff
Notice that the staff line goes through the *center* of each note



Draw four whole notes on the **2nd** staff line
The printed note is a sample

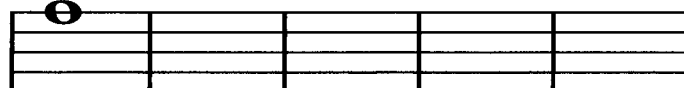
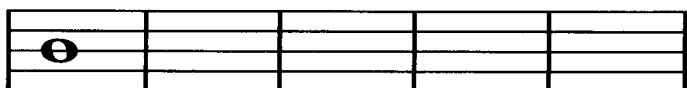
Draw four whole notes on the **4th** staff line
The printed note is a sample

Be sure each note is half above and half below the line



Draw four whole notes on the **3rd** staff line,
as shown in the sample

Draw four whole notes on the **5th** staff line,
as shown in the sample

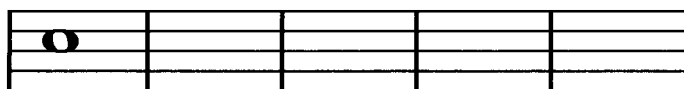


Notes in a *space* are placed *between* two staff lines
The *first* space is between the *bottom two* staff lines

Draw four whole notes in the **1st** space
The printed note is a sample

Draw four whole notes in the **3rd** space
The printed note is a sample

Be sure each note completely fills the space



Draw four whole notes in the **2nd** space,
as shown in the sample

Draw four whole notes in the **4th** space,
as shown in the sample

