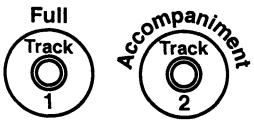


Turkish March

(from *The Ruins of Athens*, Op. 113)
by Ludwig van Beethoven



Tubes required:

(For the “Low” tubes, use bass tubes or tubes with Octavator™ caps.)

Pattern 1: F C

Assign both tubes to one student.

Pattern 2: D A

Assign both tubes to one student.

Pattern 3: C G

Assign both tubes to one student.

Tremolo 1: Low E

Assign one tube to each of two students.

Tremolo 2: Low A

Assign one or two tubes to one student.

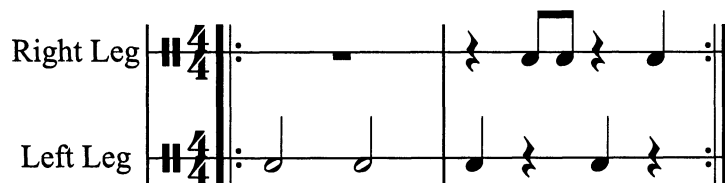
Tremolo 3: Low D Low B

Assign one or two tubes to one student.

Unpitched percussion: Wood blocks, tambourine

Teaching suggestions:

- Use the accompaniment visual to show the different parts of the song. Photocopy as a transparency, or enlarge for all students to see. Distribute the tubes as suggested above. Group the students by the accompaniment part (patterns or tremolos) they play, next to each other in order of their entries.
- Teach the rhythm of Patterns 1 and 2. These patterns share the same two single-measure rhythms, although Pattern 2 has the rhythm in opposite order of Pattern 1. First practice by patting legs with hands. Pattern 1: Pitch F on left leg, Pitch C on right leg; Pattern 2: Pitch D on left leg, Pitch A on right leg.



Slavonic Dance

(Op. 46, No. 7)

When using CD, wait for 4 clicks.

ANTONÍN DVOŘÁK
Arranged by CHRIS JUDAH-LAUDER

♩ = 140

Melody (on CD) Am G

Harmony

Boomwhackers®

Patterns 1-5

(Pattern 1) (P1) (P1) (P1) (Pattern 2) (P2) (P2)

Mel. 8 F

Harm. 8

Bw.

P. 1-5 8

(P2) (Pattern 3) (P3) (P3) (P3) (P3) (P3)

Mel. 15 C

Harm. 15

Bw.

P. 1-5 8

1. Dm Em 2. Dm rit. Em Am

(Pattern 4) (P4) (P3) (Pattern 5) (P3) (P5)

Rondeau Theme

(from Symphonic Suite No. 1)

JEAN-JOSEPH MOURET
Arranged by CHRIS JUDAH-LAUDER

When using CD, wait for 3 clicks.

$\text{♩} = 120$

Soprano Recorder

Melody (on CD)

Wood Blocks

Cabasa

Hand Drum

Boomwhackers®

C G

Pattern 1 (P1) Pattern 2 (P2)

5

S. Rec.

Mel.

W.B.

Cab.

H.D.

Bw.

C G

(P1) (P1) (P2) (P2)