

Correlated Baritone Solos

Four separate solos, with piano accompaniment, were written specifically for this course. We strongly encourage the use of these solos as supplementary lesson material.

1. AIR FOR BARITONE *an original Baritone Solo by MAJOR HERMAN VINCENT*
2. SONG OF THE WOODS *an original Baritone Solo by PAUL TANNER*
3. POLKA *an original Baritone Solo by MAJOR HERMAN VINCENT*
4. ELEGY *an original Baritone Solo by MAJOR HERMAN VINCENT*

When two notes are given together on the chart (F# and Gb), they are the same tone and, of course, played with the same fingering.

When two fingerings are given always use the top one. Fingerings below the top fingering are called alternate fingerings and are used only in special situations.

Fingering Chart

| | | | | | | | | |
|-------------------------|-------------------------|-------------------------|--------------|-------------------------|-------------------------|-------------------------|-------------------------|---|
| E \flat | F | G \flat (F \sharp) | G | A \flat (G \sharp) | A | B \flat | B \natural | C |
| | | | | | | | | |
| D \flat (C \sharp) | D | E \flat (D \sharp) | E \natural | F | F \sharp (G \flat) | G | A \flat (G \sharp) | |
| | | | | | | | | |
| A \natural | B \flat (A \sharp) | B \natural | C | D \flat (C \sharp) | D \natural | E \flat (D \sharp) | | |
| | | | | | | | | |
| E | F | F \sharp (G \flat) | G | A \flat (G \sharp) | A \natural | B \flat | | |
| | | | | | | | | |

The Studies and Etudes on this page correlate approximate with Page 5, Lesson 2 of the Baritone method book "THE BARITONE STUDENT", Level II, and the correlation is continued throughout the book.

Slowly



(Play accurately; do not slide between notes)

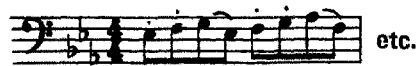


1 + 2 Valves 2 + 3 Valves 1 + 3 Valves

g minor (Harmonic)



Also play:



Etude No. 1

Allegro

