

LEVEL TWO (INTERMEDIATE)

# Studies and Melodious Etudes for Flute

by  
Douglas Steensland  
in collaboration with  
James Ployhar

## To The Teacher

"Studies And Melodious Etudes", Level II, is a supplementary technic book of the Belwin "STUDENT INSTRUMENTAL COURSE". Although planned as a companion and correlating book to the method, "The Flute Student", it can also be used effectively with most intermediate flute instruction books. It provides for extended and additional treatment in technical areas which are limited in the basic method because of lack of space. Emphasis is on developing musicianship through scales, warm-ups and technical drills, musicianship studies and interesting melody-like etudes.

The Belwin "STUDENT INSTRUMENTAL COURSE" - A course for individual and class instruction of LIKE instruments, at three levels, for all band instruments.

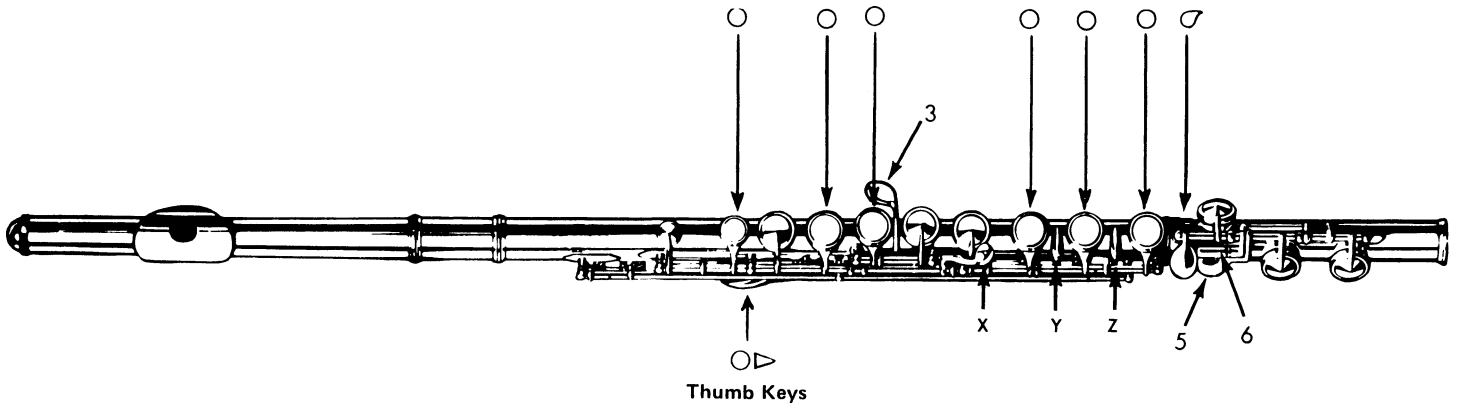
EACH BOOK IS COMPLETE  
IN ITSELF BUT ALL BOOKS  
ARE CORRELATED  
WITH EACH OTHER

**METHOD**  
"The Flute Student"  
For individual  
or  
class instruction

ALTHOUGH EACH BOOK CAN BE  
USED SEPARATELY, IDEALLY,  
ALL SUPPLEMENTARY BOOKS  
SHOULD BE USED AS COMPANION  
BOOKS WITH THE METHOD

STUDIES & MELODIOUS ETUDES	TUNES FOR TECHNIC	FLUTE SOLOS	DUETS FOR STUDENTS
<p>Supplementary scales, warm-up and technical drills, musicianship studies and melody-like etudes, all carefully correlated with the method.</p>	<p>Technical type melodies, variations, and "famous passages" from musical literature for the development of -- technical dexterity.</p>	<p>Four separate correlated Solos, with piano accompaniment, arranged by Douglas Steensland: Melody from "Don Giovanni" . . . . . Mozart Ballet of the Shepherds from "Armide" . . . . . von Gluck Elf Dance . . . . . Grieg Nocturne in E<math>\flat</math> . . . . . Chopin</p>	<p>A book of carefully correlated duet arrangements of interesting and familiar melodies without piano accompaniments. Available for: Flute B<math>\flat</math> Clarinet Alto Sax B<math>\flat</math> Cornet Trombone</p>

# Fingering Chart



- - Indicates hole closed or keys to be pressed.
- - Indicates hole or key open.

When a number is given, refer to picture of the instrument for additional key to be pressed.  
 When two ways to finger a note are given, the first way is the one most often used. The second fingering is for use in special situations.  
 When two notes are given together (F# and Gb), they are the same tone and, of course, played the same way.

C	D $\flat$ (C $\sharp$ )	D	E $\flat$ (D $\sharp$ )	E (F $\flat$ )	F	F $\sharp$ (G $\flat$ )	G	
A $\flat$ (G $\sharp$ )	A	B $\flat$ (A $\sharp$ )	B (C $\flat$ )	C	D $\flat$ (C $\sharp$ )	D	E $\flat$ (D $\sharp$ )	E (F $\flat$ )
F	F $\sharp$ (G $\flat$ )	G	A $\flat$ (G $\sharp$ )	A	B $\flat$ (A $\sharp$ )	B (C $\flat$ )	C	D $\flat$ (C $\sharp$ )
D	E $\flat$ (D $\sharp$ )	E (F $\flat$ )	F	F $\sharp$ (G $\flat$ )	G	A $\flat$ (G $\sharp$ )	A	B $\flat$ (A $\sharp$ )

The Studies and Etudes on this page correlate approximately with Page 5, Lesson 2 of the flute method book "THE FLUTE STUDENT", Level Two, and the correlation is continued throughout the book:

Slowly



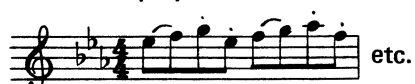
Slowly



### CHROMATIC SCALE



Also play:



## Etude No. 1

Moderato

