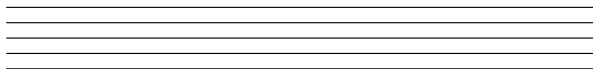


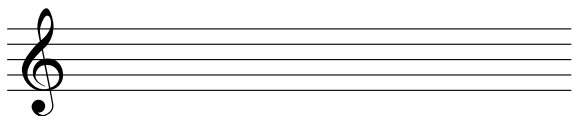
GET READY TO PLAY

STAFF



A Staff has five lines and four spaces.

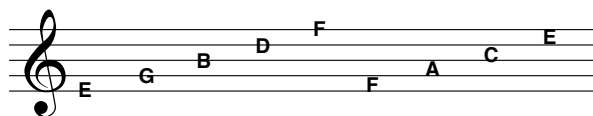
CLEF SIGN



A clef sign is a symbol placed on the staff.

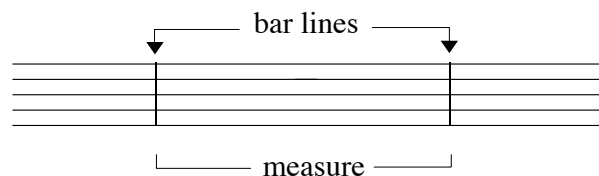
A B C D E F G A B C D E F G

The first seven letters of the alphabet are used in music to name the lines and spaces.



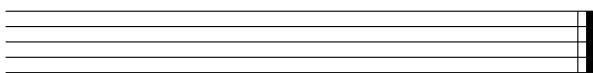
Names of the Lines and Spaces.

BAR LINE AND MEASURE



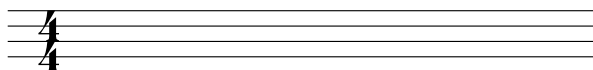
A bar line is a line drawn through the staff.
A measure is the distance between two bar lines.

FINAL BAR LINE



A final bar line has a thin bar line and a thick bar line which indicates the end.

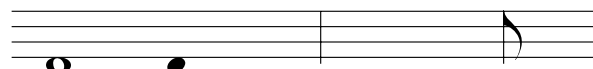
TIME SIGNATURE



There are four counts in four/four time.

A time signature is placed at the beginning of the staff and indicates the number of counts in a measure.

NOTE



Note heads stem flag

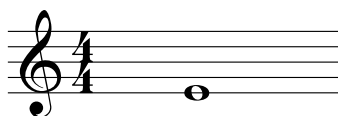
The parts of a note.

ACCIDENTALS



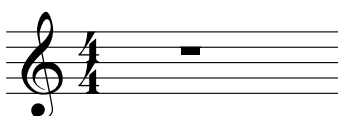
Flats, Sharps, and Naturals are called accidentals.

Whole Note



Receives four counts of sound in 4/4 time.

Whole Rest



Receives four counts of silence in 4/4 time.

Lesson 1

D

E_b

F

Breath Mark
,

Take a breath at this sign or during rest

1. D

Count! 1 2 3 4 1 2 3 4 1 2 3 4 1 2 3 4 1 2 3 4 1 2 3 4

2. E_b

Count! 1 2 3 4 1 2 3 4 1 2 3 4 1 2 3 4 1 2 3 4 1 2 3 4

3. F

Count! 1 2 3 4 1 2 3 4 1 2 3 4 1 2 3 4 1 2 3 4 1 2 3 4

4. Groovin' 'N' Moovin'

Count! 1 2 3 4 1 2 3 4 1 2 3 4 1 2 3 4 1 2 3 4 1 2 3 4

5. Hand Off

Are you counting?

6. The Seesaw

Count!

7. Easy Does It

Count!

8. Balloon Ride

Count!

9. Name These Notes

Write the name of each note, then play.

*Extra Credit Exercise 1
See page 30 and 31*