

Sing Now His Song

for S.A.T.B. voices, optional handbells, accompanied *

Words and Music by
RUTH ELAINE SCHRAM

Quoting
"Come, Christians, Join to Sing"

Brightly, with joy (♩ = ca. 136)

ACCOMP. *mf*

8vb

4 ⊕ Hbbs.

(8vb) - 1 8vb

8 SOPRANO / ALTO *mf*

Sing now, — sing now His

TENOR / BASS *mf*

8vb

9 ⊖ Hbbs.

(8vb) - 1 8vb

* Part for Handbells (3 octaves) is on page 11-12.

© 2012 Word Music, LLC (ASCAP)
All Rights Reserved. Used by Permission.

EVEN IF YOU POSSESS A CCLI LICENSE, YOU MAY NOT COPY THIS MUSIC.
If you have questions about CCLI, please call 800/234-2446.

11 song. _____

song, His song. See how His

This system shows the vocal line and piano accompaniment for measures 11-13. The vocal line is in a soprano clef with a key signature of one flat (B-flat). The piano accompaniment is in a bass clef. The music features a melodic line in the voice and a harmonic accompaniment in the piano. The lyrics are: "song, His song. See how His".

⊕ Hbbs. ⊖ Hbbs.

(8vb)-----

This system shows the piano accompaniment for measures 11-13. It includes a grand staff with treble and bass clefs. The music features a melodic line in the right hand and a harmonic accompaniment in the left hand. The lyrics are: "song, His song. See how His".

14 strong. _____

love has made us strong, made us strong.

This system shows the vocal line and piano accompaniment for measures 14-16. The vocal line is in a soprano clef with a key signature of one flat (B-flat). The piano accompaniment is in a bass clef. The music features a melodic line in the voice and a harmonic accompaniment in the piano. The lyrics are: "love has made us strong, made us strong."

⊕ Hbbs.

(8vb)-----

This system shows the piano accompaniment for measures 14-16. It includes a grand staff with treble and bass clefs. The music features a melodic line in the right hand and a harmonic accompaniment in the left hand. The lyrics are: "love has made us strong, made us strong."

17

Strong to pro - claim His mer - cy and un - fail - ing

This system shows the vocal line and piano accompaniment for measures 17-19. The vocal line is in a soprano clef with a key signature of one flat (B-flat). The piano accompaniment is in a bass clef. The music features a melodic line in the voice and a harmonic accompaniment in the piano. The lyrics are: "Strong to pro - claim His mer - cy and un - fail - ing".

17

⊖ Hbbs.

This system shows the piano accompaniment for measures 17-19. It includes a grand staff with treble and bass clefs. The music features a melodic line in the right hand and a harmonic accompaniment in the left hand. The lyrics are: "Strong to pro - claim His mer - cy and un - fail - ing".

20

grace; sing now, — sing now His

Musical notation for vocal line at measure 20, showing lyrics: "grace; sing now, — sing now His". The notation includes a treble clef, a key signature of one flat, and a common time signature. The melody consists of quarter and eighth notes.

⊕ Hbbs. ⊖ Hbbs.

Musical notation for piano accompaniment at measure 20, including dynamic markings "⊕ Hbbs." and "⊖ Hbbs.". The piano part features a steady eighth-note accompaniment in the right hand and a bass line in the left hand.

23

song.

Musical notation for vocal line at measure 23, showing the lyric "song.". The notation includes a treble clef, a key signature of one flat, and a common time signature. The melody is mostly rests.

⊕ Hbbs.

Musical notation for piano accompaniment at measure 23, including dynamic marking "⊕ Hbbs.". The piano part features a steady eighth-note accompaniment in the right hand and a bass line in the left hand.

Sub-----

27

Sing now — His song, His song.

Sing now, sing now His song, His

Musical notation for vocal line at measure 27, showing lyrics: "Sing now, sing now His song, His". The notation includes a treble clef, a key signature of one flat, and a common time signature. The melody includes a long note with a fermata.

27

⊖ Hbbs. ⊕ Hbbs.

Musical notation for piano accompaniment at measure 27, including dynamic markings "⊖ Hbbs." and "⊕ Hbbs.". The piano part features a steady eighth-note accompaniment in the right hand and a bass line in the left hand.

Sub-----



30

song. Hear how cre - a - tion sings a -

⊖ Hbbs.

(8vb) - - - 8vb - - -

33

long. long, sings a - long. The heav - ens

mp cresc.

⊕ Hbbs.

35

⊖ Hbbs.

mp cresc.

36

still de - clare the glo - ry of the Lord!

mf

⊕ Hbbs.

mf

39

Sing now, — sing now His song.

⊖ Hbbs.

42

43 * *f*

Come Chris-tians, join to sing:

⊕ Hbbs.

45

Al - le - lu - ia! A - men! Loud praise to Christ our King:

⊖ Hbbs.

⊕ Hbbs.

* Tune: MADRID, Traditional Spanish melody
 Words: Christian H. Bateman, 1813-1889

49

51

Al - le - lu - ia! A - men! Let all, with heart and voice, —

⊖ Hbbs.

51

53

be - fore His throne re - joice. — Praise is His gra - cious choice:

⊕ Hbbs.

57

A - men! Sing now His
Al - le - lu - ia! Ah, — sing now, — sing now His

⊖ Hbbs.

Sub

61 song.

62

song. Sing un - til the Name of Je - sus

⊕ Hbbs.

64

tongue.

is on ev - 'ry tongue, ev - 'ry tongue.

(8vb)

67

Let ev - 'ry heart and voice be lift - ed up in

Let ev - 'ry heart and voice be lift - ed up in

⊖ Hbbs.

70

71

praise! Sing now, _____

⊕ Hbbs.

71

73

sing now, _____ sing now, _____

⊖ Hbbs. ⊕ Hbbs.

8vb - - -

76

ff

sing now His song! _____

⊖ Hbbs. ⊕ Hbbs.

ff

(8vb) - 1

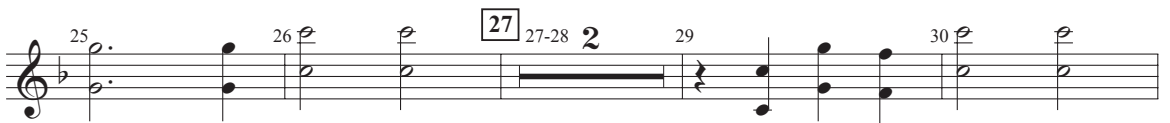
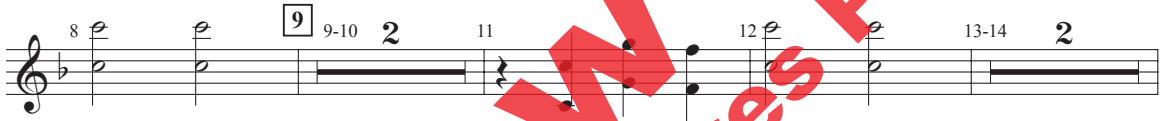
8vb - - - 1

Sing Now His Song

Words and Music by
RUTH ELAINE SCHRAM

Quoting
"Come, Christians, Join to Sing"

3 Octaves
Handbells Used: 17



© 2012 Word Music, LLC (ASCAP)
All Rights Reserved. Used by Permission.

EVEN IF YOU POSSESS A CCLI LICENSE, YOU MAY NOT COPY THIS MUSIC.
If you have questions about CCLI, please call 800/234-2446.

31-32 2 33 34 35 36-37 2

38 39 40 41-42 2 43

mf *f*

44 45-46 2 47 48 49-50 2

51 51-54 4 55 56 57 58

f

59 60 61 62 63

64 65 66 67-69 3

70 71 72 73 74

75 76 77 78 79 Sk A

ff

Preview Only
Legal use requires purchase

