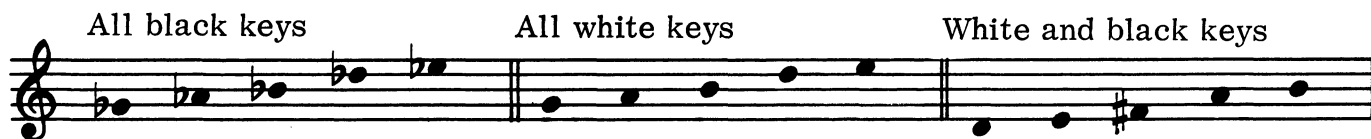


PENTATONIC

Penta is from the Greek meaning five. A Pentatonic scale has five tones. One scale can be found on the five black keys of the piano. However,

it may be white keys or a combination of white and black keys.

Much folk music from earliest times in many countries used this Pentatonic.

**SLEEPY**

BETH BASSETT

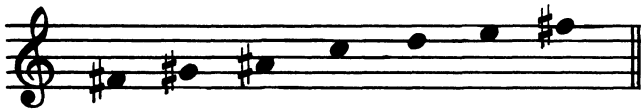
Lazily

Copyright MCMLXXII by Myklas Music Press, Denver CO USA

All rights reserved. No part of this publication may be reproduced in any form without permission of the publisher.

WHOLE TONE

The Whole Tone Scale is all whole steps. There are only two possible whole tone scales on a keyboard instrument. They may begin on any tone.



Claude Debussy in the late 19th century used the Whole Tone Scale along with other patterns for new sounds.

The careful use of the damper pedal in *Sea Breezes* gives an interesting misty effect.

SEA BREEZES

RUTH PERDEW

Moving along (♩. = 69 - 80)

Copyright MCMLXXII by Myklas Music Press, Denver CO USA

All rights reserved. No part of this publication may be reproduced in any form without permission of the publisher.

LYDIAN MODE

The Lydian Mode can be found by playing from F to F on the white keys of the piano.



There is a whole step between the third and fourth degrees. The unusual tone of the Lydian Mode compared with

the Major Scale is the raised fourth degree. This is easily seen when the Lydian is played on C.



THE WORKSHOP

D. JAEGER BRES

Allegro

Copyright MCMLXXII by Myklas Music Press, Denver CO USA

All rights reserved. No part of this publication may be reproduced in any form without permission of the publisher.