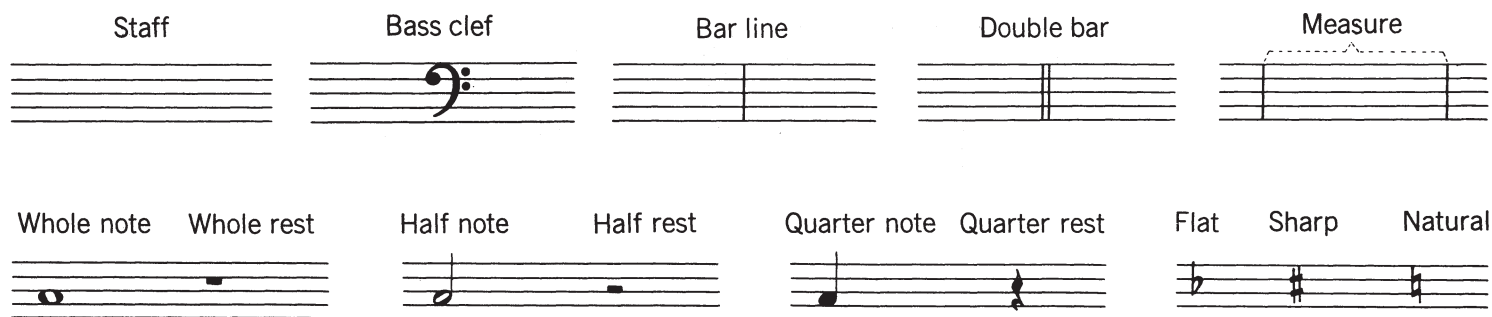


# LESSON 1

## The Language of Music

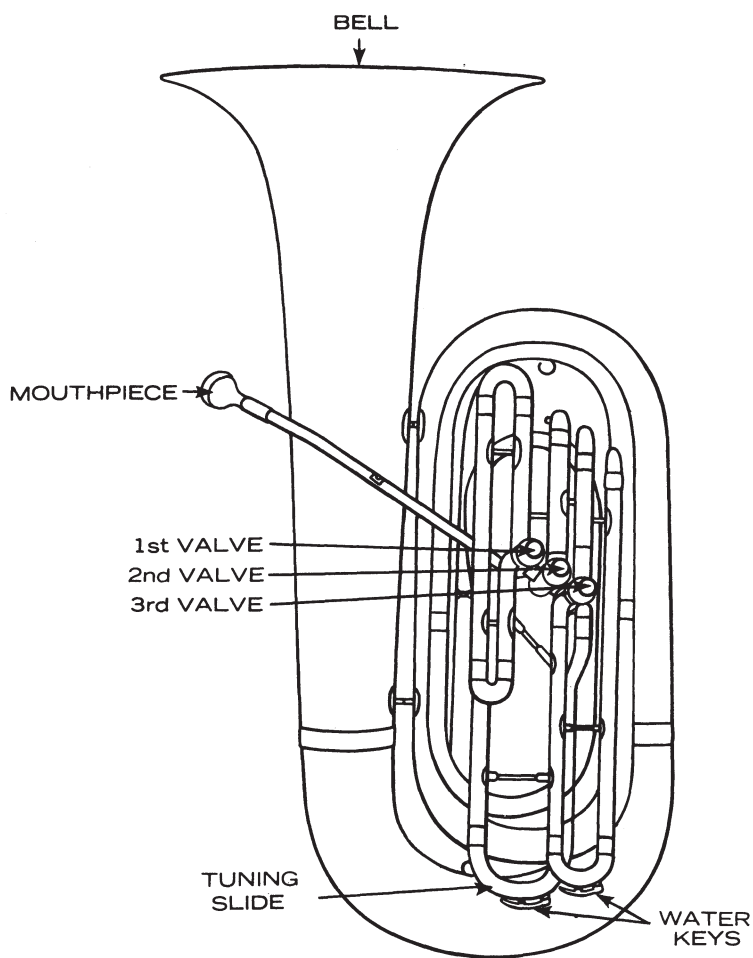


## Time Signatures

$\frac{4}{4}$  = 4 counts in  
each measure

$\frac{3}{4}$  = 3 counts in  
each measure

$\frac{2}{4}$  = 2 counts in  
each measure

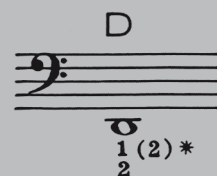


Rule 1 — Start each tone with the tip of your tongue.

Rule 2 — Keep your cheeks in.

Rule 3 — Listen to yourself.

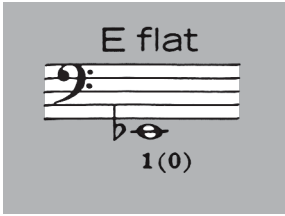
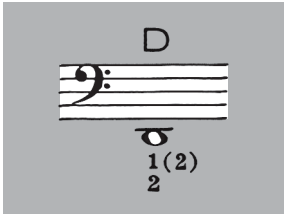
**1st Tone**



\*(Fingerings) are for E Flat Tuba when different from BBb Tuba.

When you are able to play this note with a good attack and hold it for 4 counts, you are ready to proceed to lesson two. Your teacher will help you.

LESSON **2**



**LET'S BEGIN**

**1**

• tongue every tone **2**

**3**

**SOMETHING NEW**

**4**

**HALF NOTES AND WHOLE NOTES**

**5**

According to the rules of music,  
the 2nd E is flat because the 1st one was.

**THE WORKS**

**6**