

# GETTING ACQUAINTED WITH MUSIC

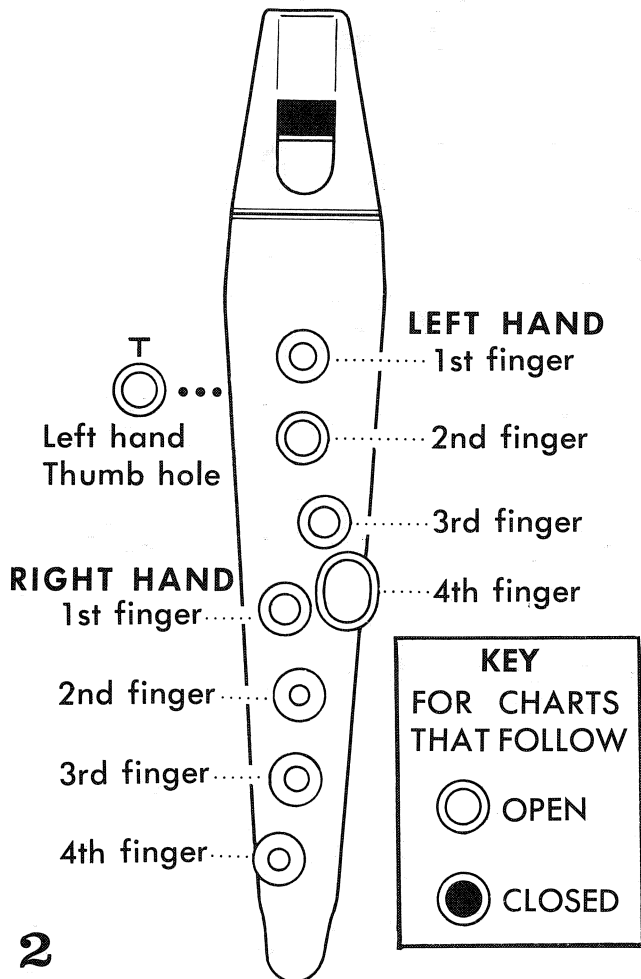
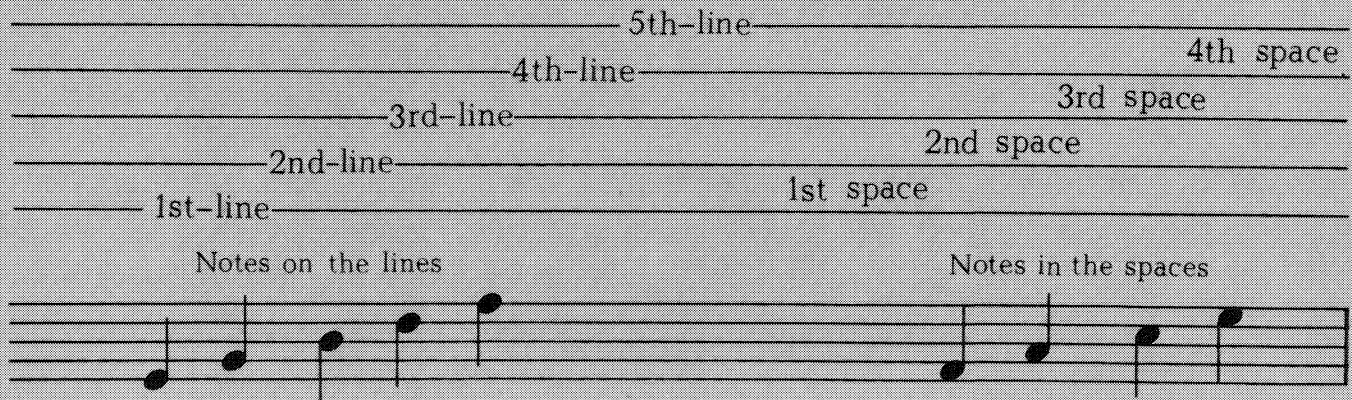
## NOTES

Musical sounds are indicated by symbols called NOTES. Their time value is determined by their color (white or black) and by stems and flags attached to the note:

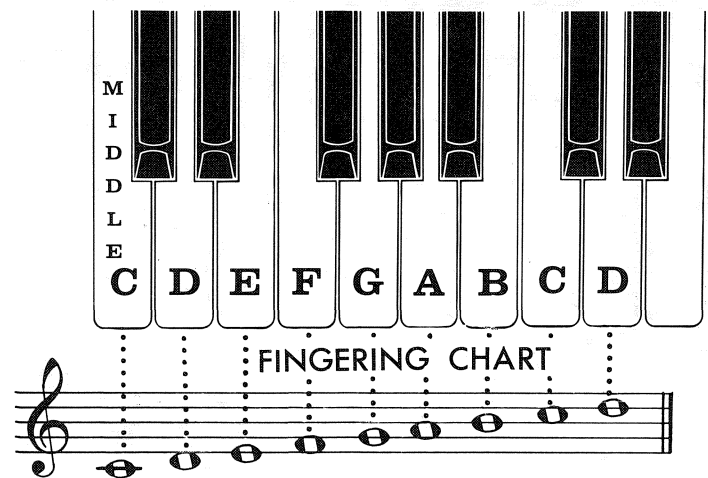


## THE STAFF

The notes are named after the first seven letters of the alphabet, endlessly repeated to include the entire range of musical sound. The name and sound of the note is indicated by its position on five horizontal lines, and the spaces between, called the staff.

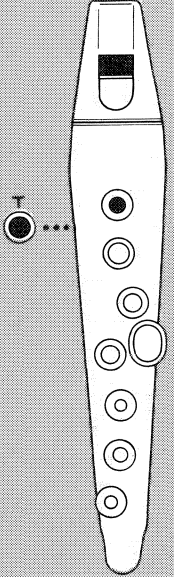


Pitch of the notes of the Tonette on the Piano Keyboard



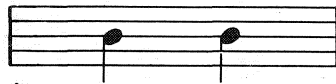
T	T	T	T	T	T	T	T	0
1	1	1	1	1	1	1	0	0
2	2	2	2	2	2	0	0	0
3	3	3	3	3	0	0	0	0
4	0	0	0	0	0	0	0	0

# LET'S PLAY WITH B AND A



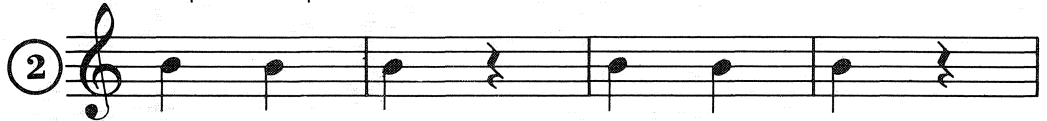
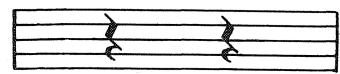
**Quarter Notes**

ONE BEAT EACH



**Quarter Rests**

ONE BEAT REST

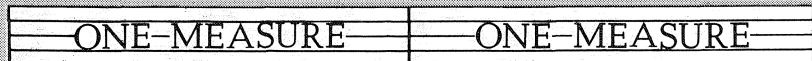


## MEASURES

bar line

bar line

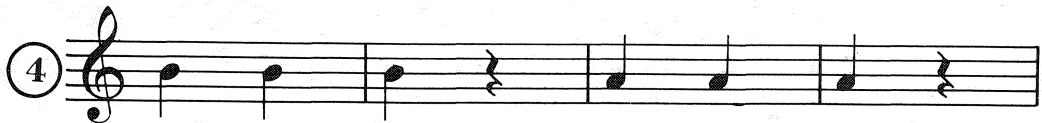
bar line

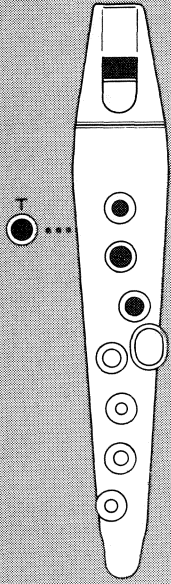


Music is divided into equal parts called measures.  
A bar line divides one measure from another.



## And Away We Go

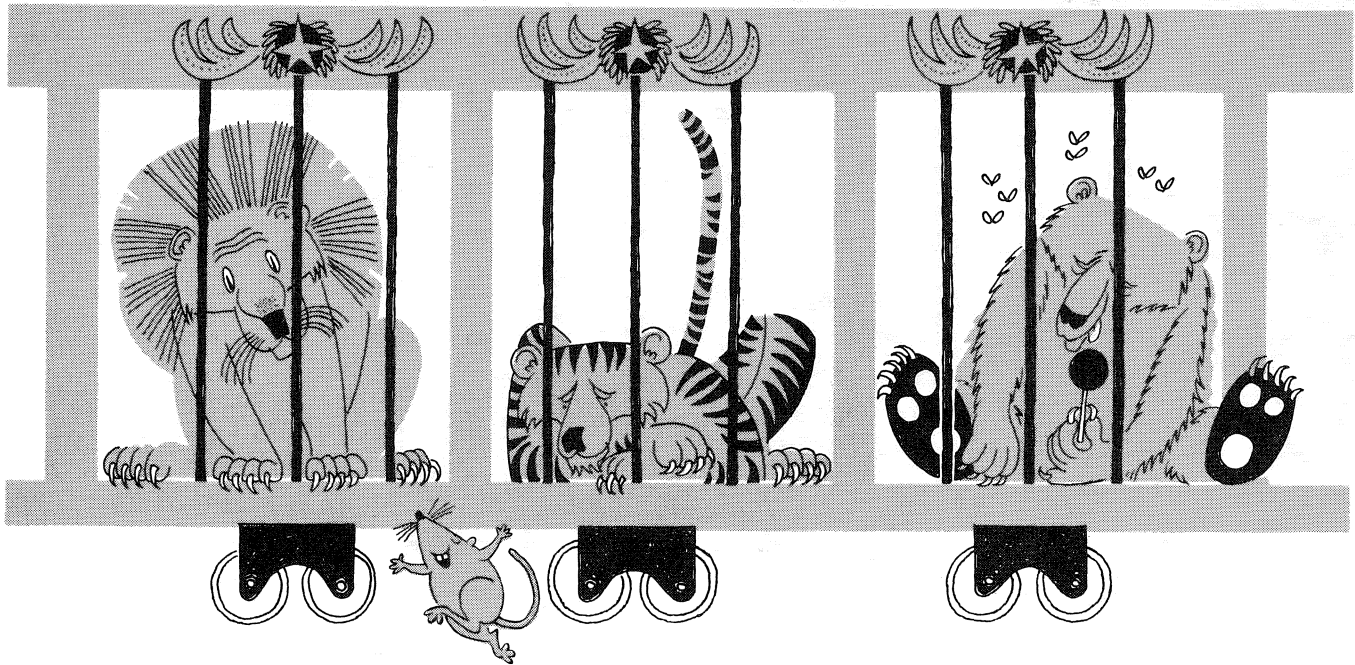
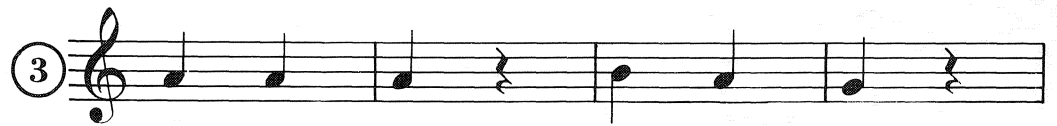




# And Now To G



## Merrily



## The Animal Fair

Play evenly

