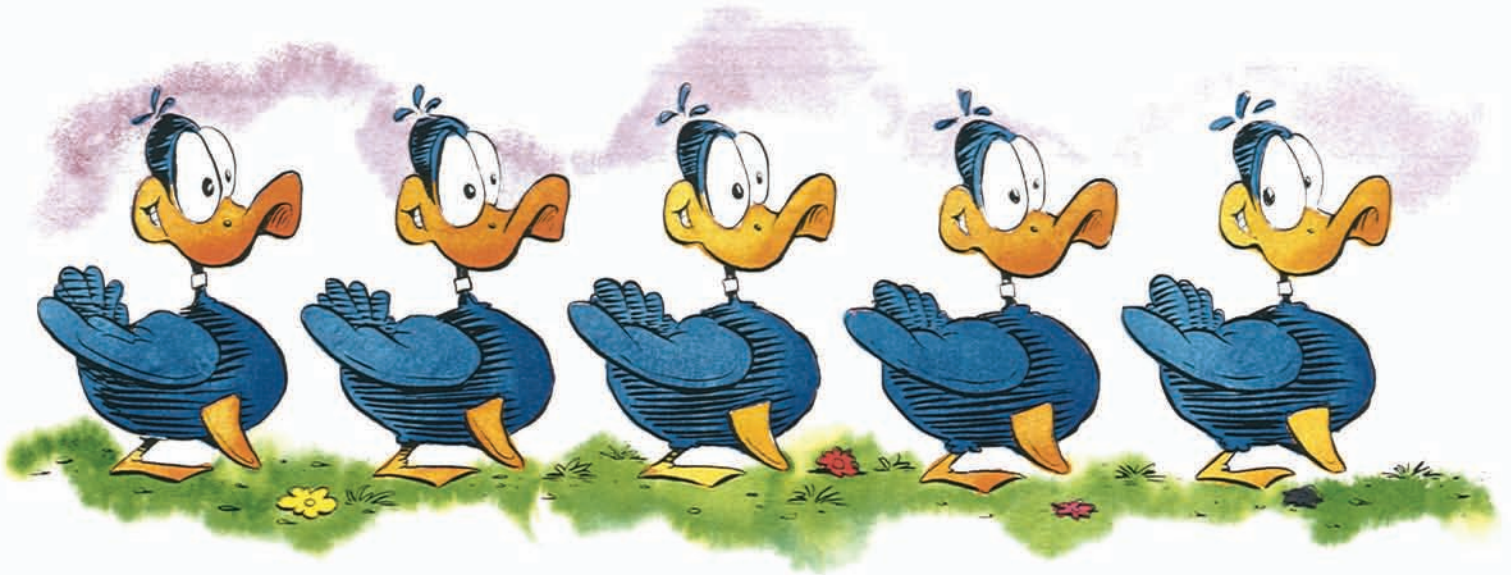


# Be Kind to Your Web-Footed Friends



March tempo

5 3 1

*mf* Be kind to your web-footed friends,

2

For a duck may be somebody's

1 2 1

Cross 2 over 1

moth-er. Be kind to your

# Stroll in the Park

Use after OHI SUSANNA! (page 39).



**Andante moderato**

(Light and airy)

Handwritten musical score for "Stroll in the Park". The score is in 4/4 time, key of D major (two sharps), and consists of four systems of piano accompaniment. The tempo is marked "Andante moderato" with the instruction "(Light and airy)". The dynamics range from *p* (piano) to *mf* (mezzo-forte).

**System 1:** Treble clef, 4/4 time. Melody:  $\overset{5}{D_5}$   $\overset{3}{E_5}$   $\overset{1}{F_5}$   $\overset{1}{G_5}$   $\overset{1}{A_5}$   $\overset{1}{B_5}$   $\overset{1}{C_6}$ . Bass clef:  $\overset{1}{D_4}$   $\overset{3}{F_4}$   $\overset{5}{A_4}$   $\overset{1}{D_5}$   $\overset{2}{E_5}$   $\overset{5}{A_5}$ . Dynamics: *p*. Fingering: 5 3 1 (treble), 1 3 5 (bass).

**System 2:** Treble clef:  $\overset{5}{D_5}$   $\overset{3}{E_5}$   $\overset{1}{F_5}$   $\overset{1}{G_5}$   $\overset{1}{A_5}$   $\overset{1}{B_5}$   $\overset{1}{C_6}$   $\overset{1}{B_5}$   $\overset{1}{A_5}$   $\overset{1}{G_5}$   $\overset{1}{F_5}$   $\overset{1}{E_5}$ . Bass clef:  $\overset{1}{D_4}$   $\overset{2}{E_4}$   $\overset{1}{F_4}$   $\overset{2}{G_4}$   $\overset{1}{A_4}$   $\overset{2}{B_4}$   $\overset{1}{C_5}$   $\overset{2}{D_5}$   $\overset{1}{E_5}$   $\overset{2}{F_5}$   $\overset{1}{G_5}$   $\overset{2}{A_5}$ . Fingering: 5 3 (treble), 1 2 1 2 (bass).

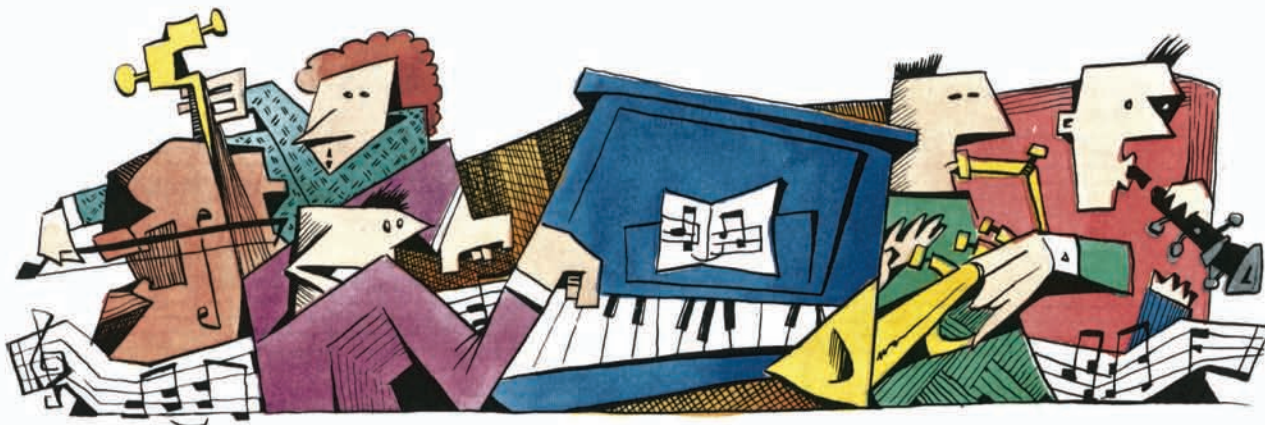
**System 3:** Treble clef:  $\overset{5}{D_5}$   $\overset{3}{E_5}$   $\overset{1}{F_5}$   $\overset{1}{G_5}$   $\overset{1}{A_5}$   $\overset{1}{B_5}$   $\overset{1}{C_6}$   $\overset{4}{D_6}$   $\overset{2}{E_6}$   $\overset{1}{F_6}$   $\overset{1}{G_6}$   $\overset{1}{A_6}$ . Bass clef:  $\overset{1}{D_4}$   $\overset{2}{E_4}$   $\overset{1}{F_4}$   $\overset{2}{G_4}$   $\overset{1}{A_4}$   $\overset{2}{B_4}$   $\overset{1}{C_5}$   $\overset{2}{D_5}$   $\overset{1}{E_5}$   $\overset{2}{F_5}$   $\overset{1}{G_5}$   $\overset{2}{A_5}$ . Fingering: 5 3 1 4 2 (treble), 1 2 (bass).

**System 4:** Treble clef:  $\overset{4}{D_5}$   $\overset{2}{E_5}$   $\overset{3}{F_5}$   $\overset{2}{G_5}$   $\overset{4}{A_5}$   $\overset{2}{B_5}$   $\overset{1}{C_6}$   $\overset{2}{D_6}$   $\overset{1}{E_6}$   $\overset{2}{F_6}$   $\overset{1}{G_6}$   $\overset{2}{A_6}$ . Bass clef:  $\overset{1}{D_4}$   $\overset{2}{E_4}$   $\overset{1}{F_4}$   $\overset{2}{G_4}$   $\overset{1}{A_4}$   $\overset{2}{B_4}$   $\overset{1}{C_5}$   $\overset{2}{D_5}$   $\overset{1}{E_5}$   $\overset{2}{F_5}$   $\overset{1}{G_5}$   $\overset{2}{A_5}$ . Dynamics: *mf*. Fingering: 4 2 3 2 4 2 1 2 (treble), 1 2 (bass).



# Modern Sounds

Use after MAKE UP YOUR MIND! (page 57).



This piece begins with the R.H. and L.H. moving up and down the keyboard in thirds. All the thirds are fingered with the 2nd and 4th fingers. R.H. and L.H. 2's are on neighboring white keys.

In the 2nd section only the R.H. plays thirds. The L.H. plays fifths with 5 and 1.

This piece shows how thirds and fifths can be used to produce very modern sounds.

**STARTING POSITION**

**KEY OF C MAJOR**  
Key Signature: no #, no b.

**Moderately slow**

*2nd time both hands 8va*